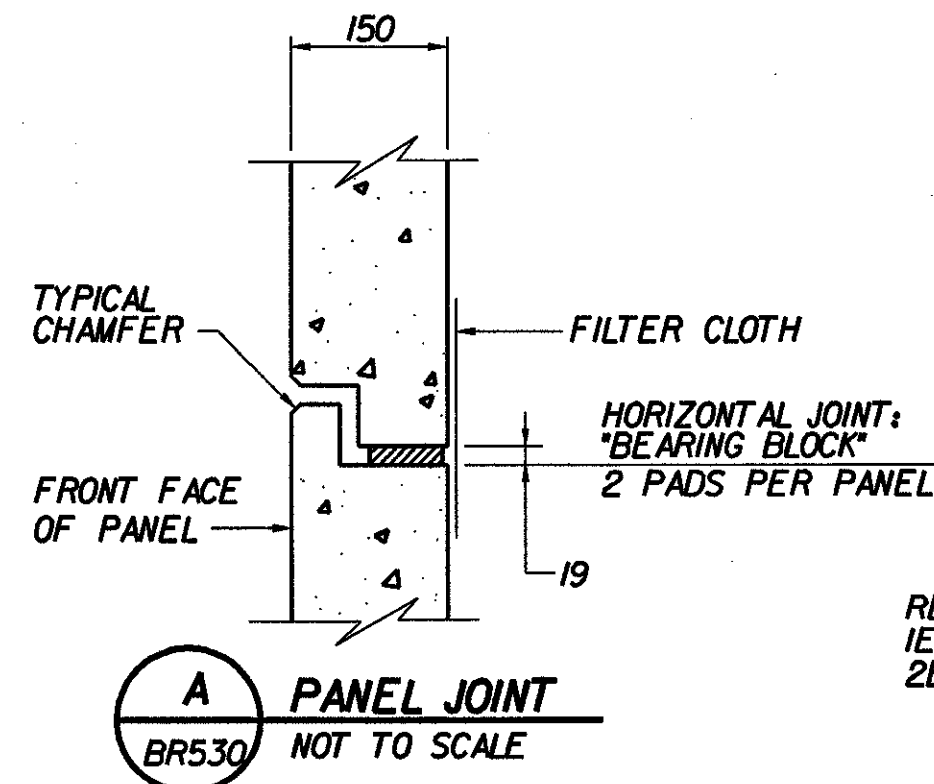
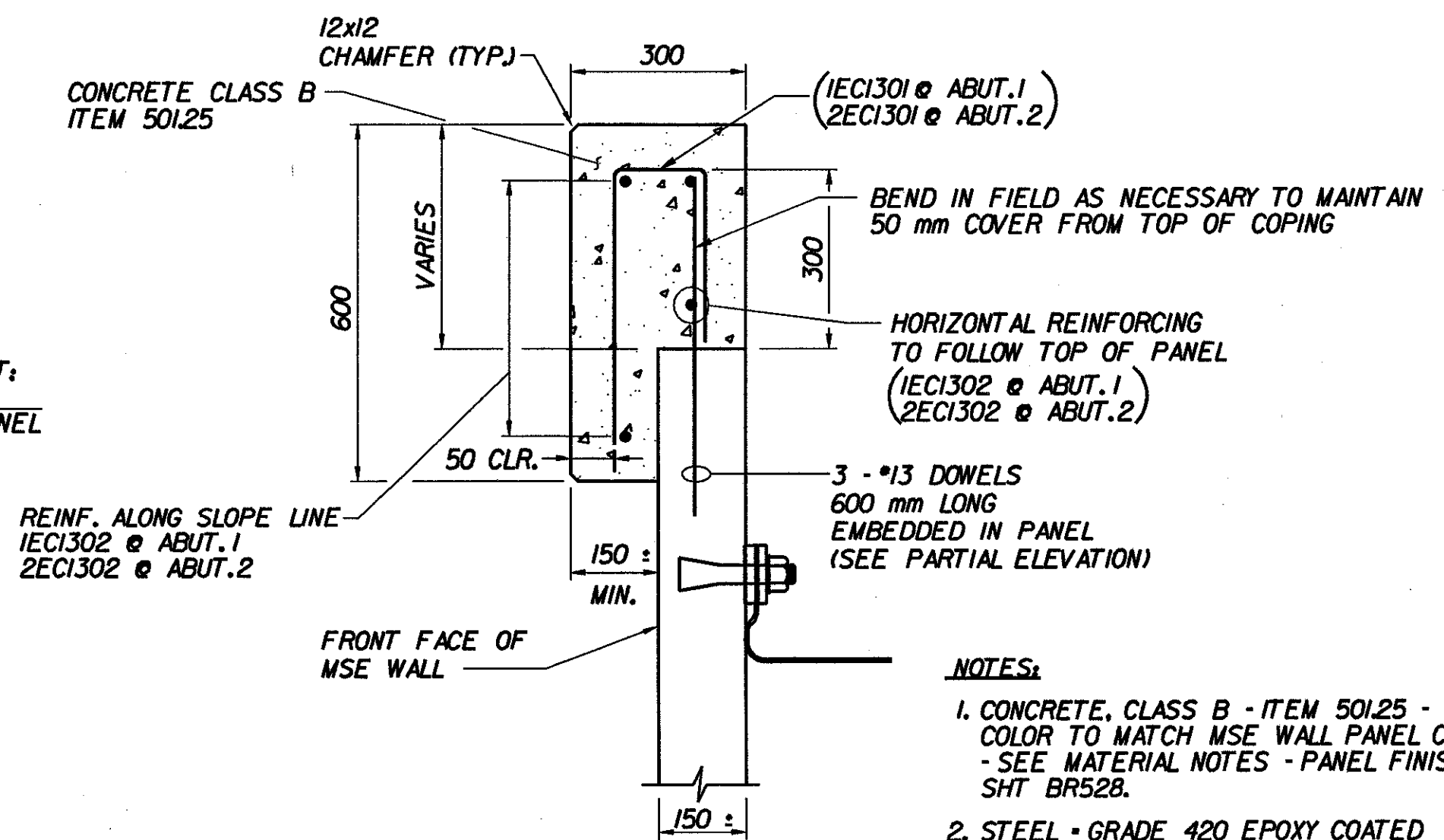


NOTE:
STRIPS OF FILTER CLOTH SHALL BE PLACED ON BACK OF PANEL OVER PANEL JOINTS. FILTER CLOTH SHALL BE ADHERED TO BACK FACE OF PANELS USING AN ADHESIVE COMPOUND.

FILTER CLOTH DETAIL
PARTIAL ELEVATION - BACK FACE
NOT TO SCALE

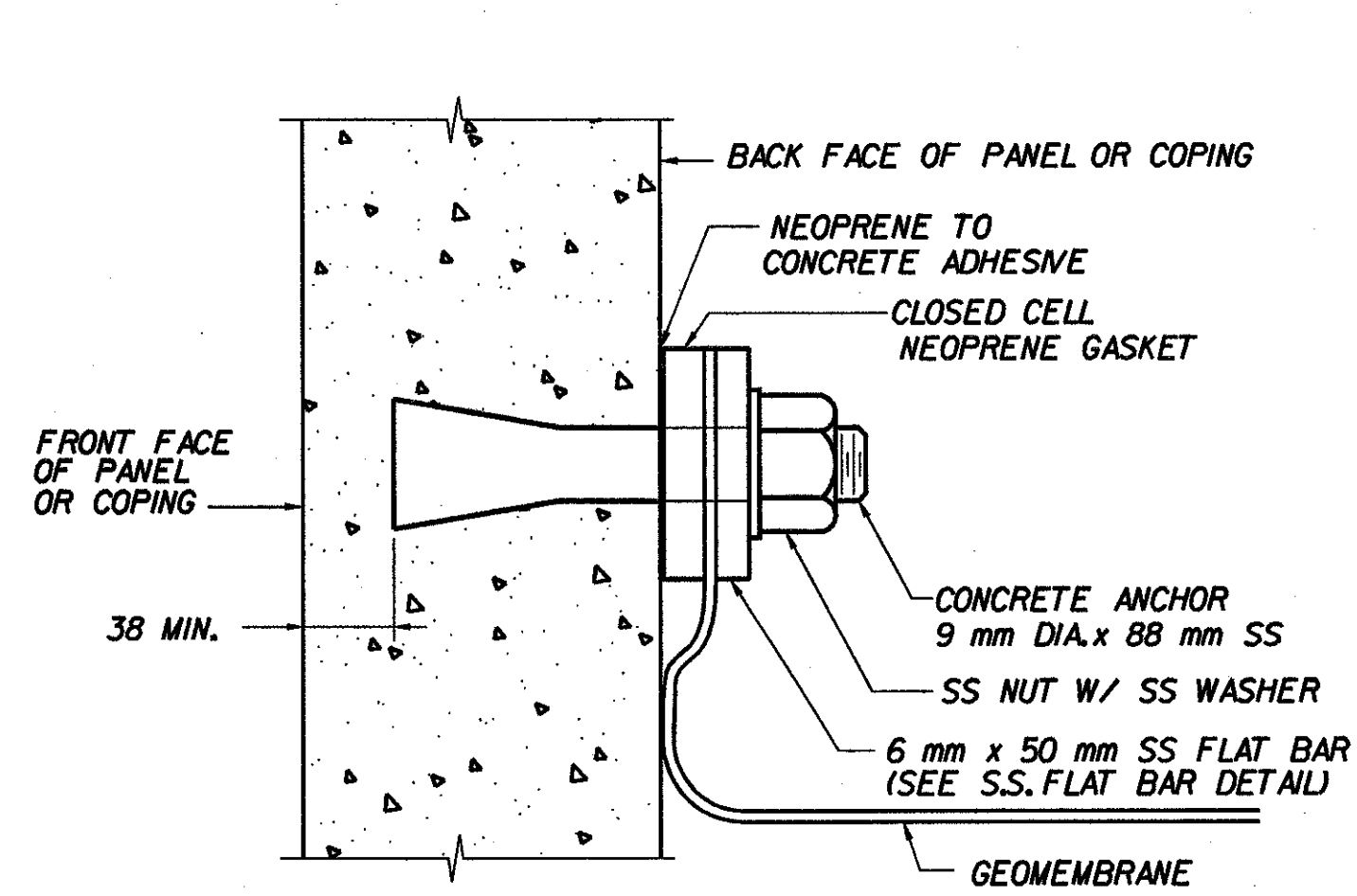


A PANEL JOINT
BR530 NOT TO SCALE

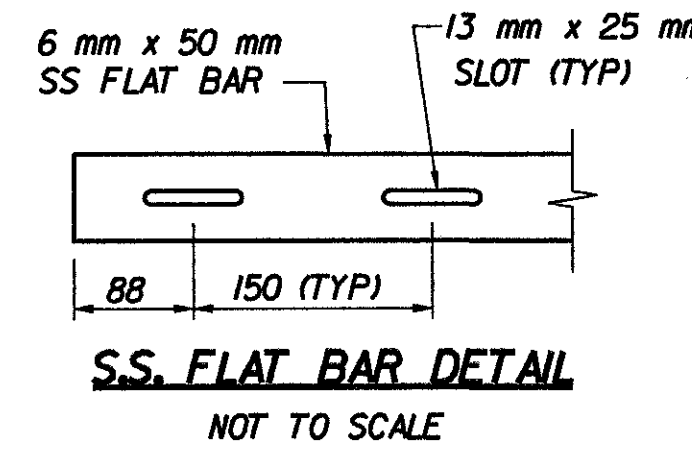


B CAST-IN-PLACE COPING
BR530 NOT TO SCALE

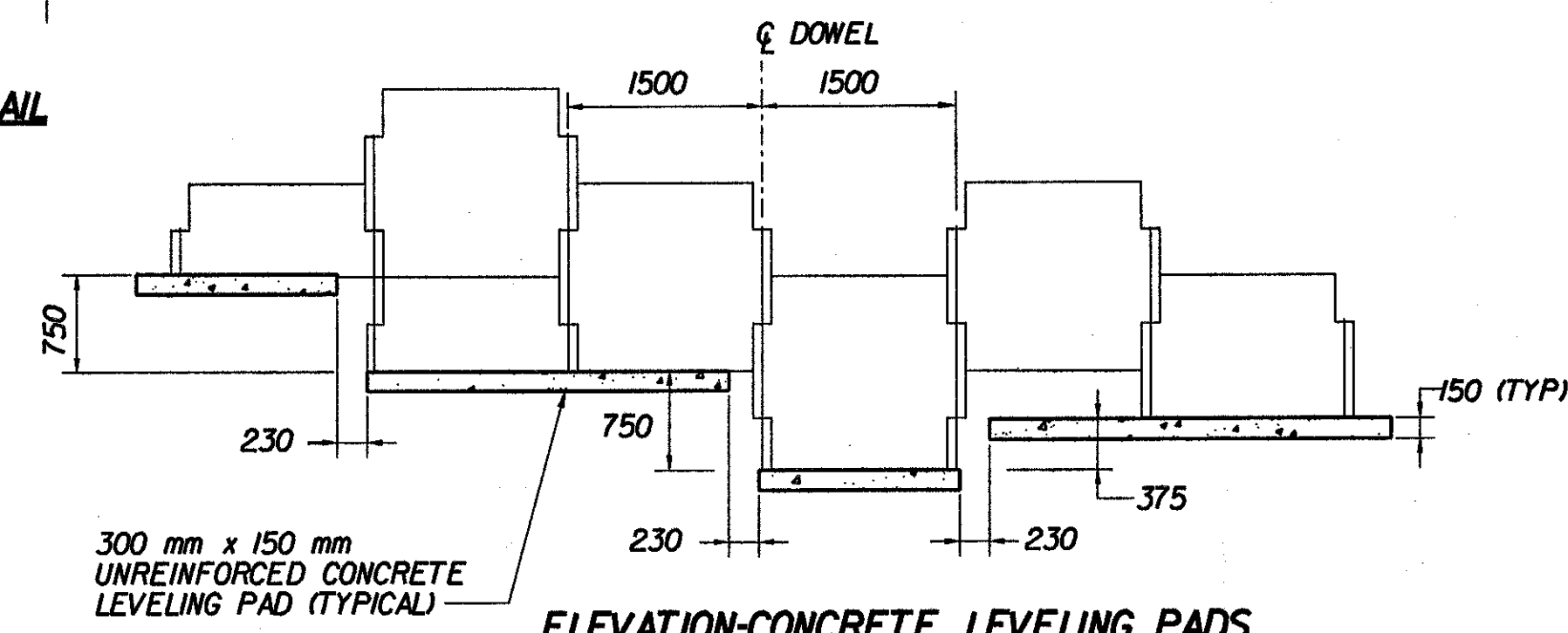
- NOTES:
1. CONCRETE CLASS B - ITEM 501.25 - COLOR TO MATCH MSE WALL PANEL COLOR. - SEE MATERIAL NOTES - PANEL FINISH SHT BR528.
 2. STEEL - GRADE 420 EPOXY COATED
 3. ALL LONGITUDINAL BARS ARE #13.
 4. THE CONTRACTOR SHALL EXERCISE CARE NOT TO STAIN THE MSE WALL PANELS WHEN PLACING CAST-IN-PLACE CONCRETE COPING. THE COST OF REMOVING STAINS SHALL BE AT THE CONTRACTOR'S EXPENSE.
 5. CONCRETE COPING WILL BE PAID FOR UNDER ITEM 501.25. REINFORCING IN COPING WILL BE PAID FOR UNDER ITEM 507.7.



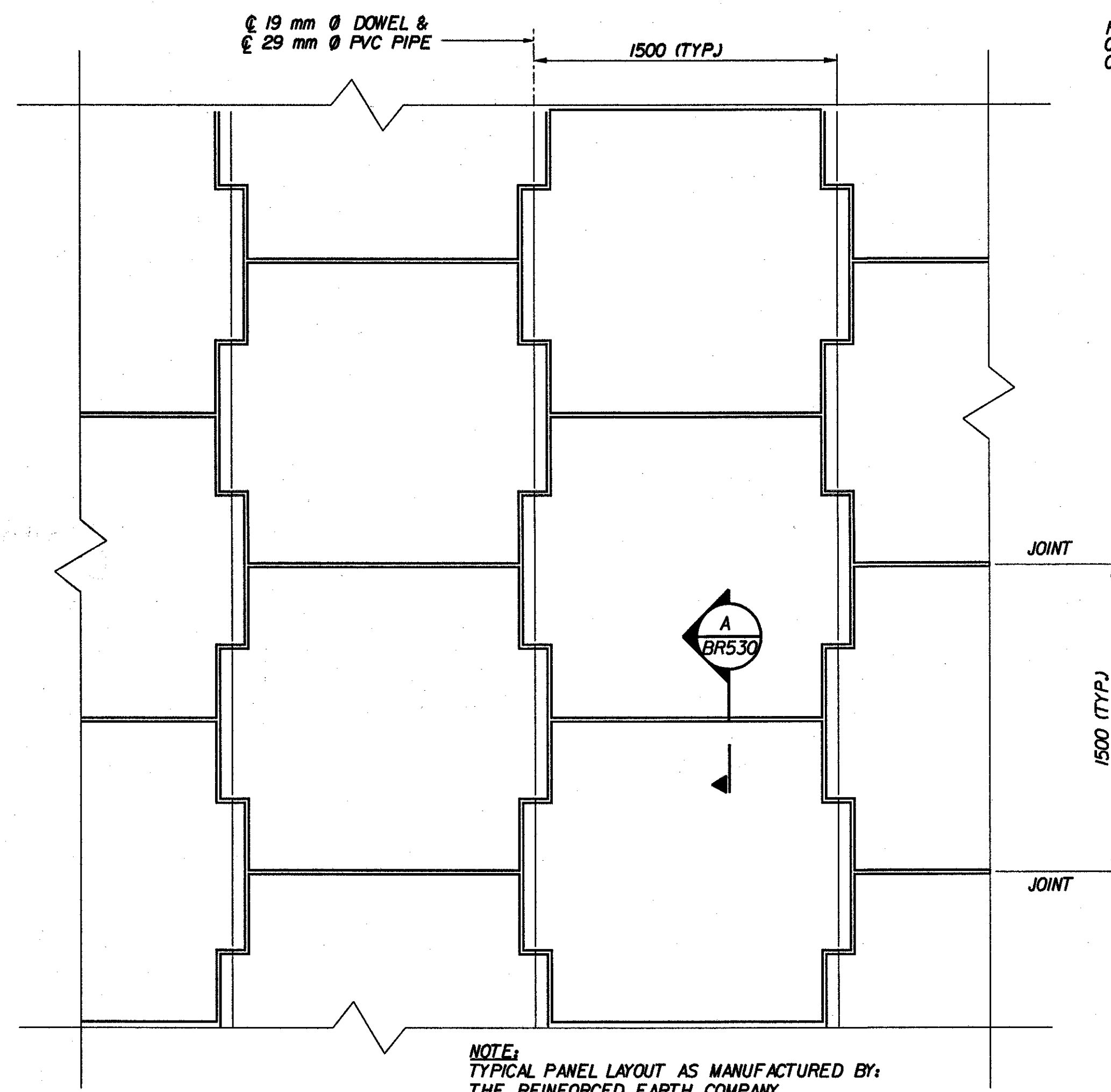
GEOMEMBRANE CONNECTION DETAIL
NOT TO SCALE



S.S. FLAT BAR DETAIL
NOT TO SCALE

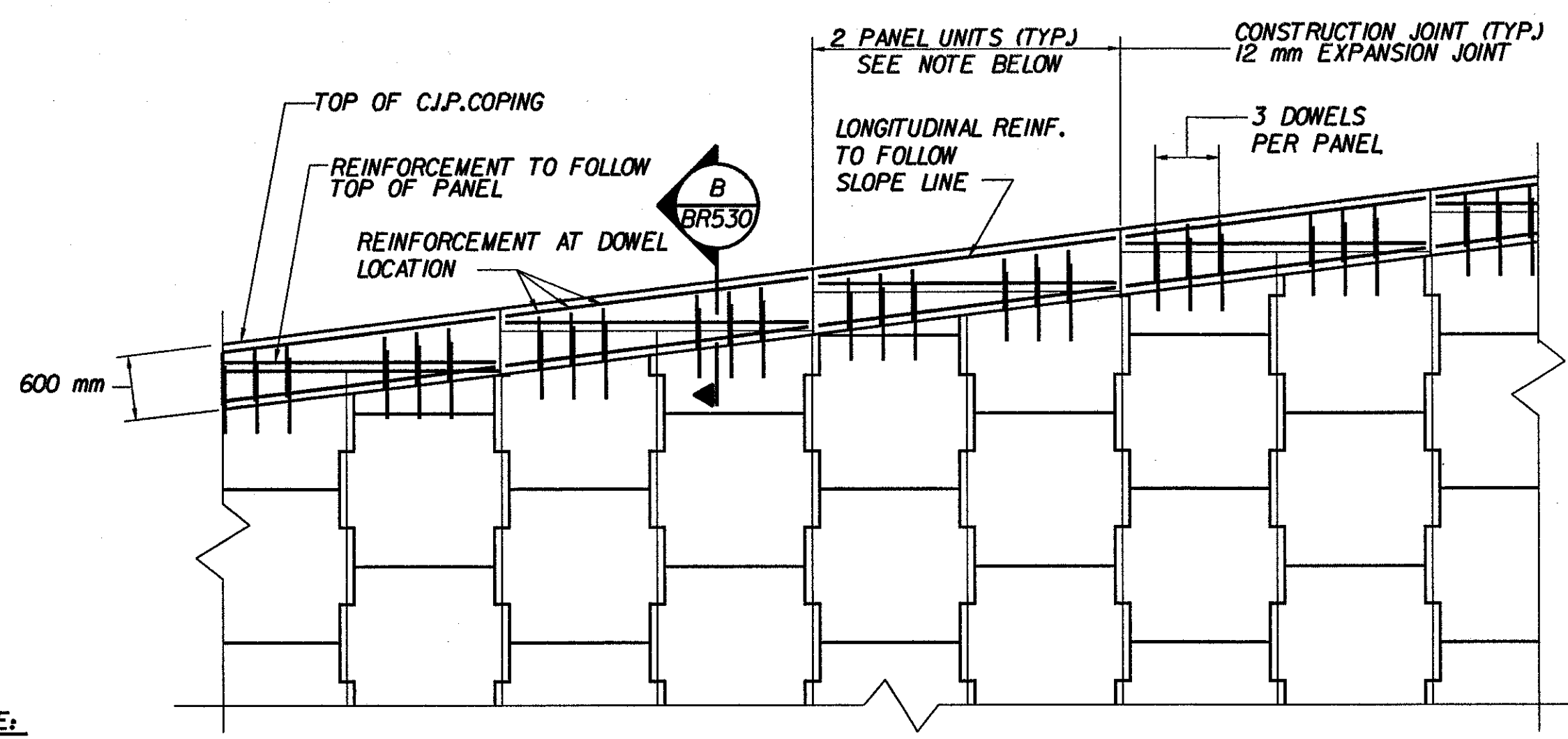


ELEVATION-CONCRETE LEVELING PADS
NOT TO SCALE



NOTE:
TYPICAL PANEL LAYOUT AS MANUFACTURED BY:
THE REINFORCED EARTH COMPANY.

TYPICAL PANEL LAYOUT
PARTIAL ELEVATION - FRONT FACE
NOT TO SCALE



C.J.P. COPING (3 DOWELS)
PARTIAL ELEVATION
NOT TO SCALE

NOTE:
JOINTS IN COPING SHALL BE AT 2 PANEL INTERVALS AND COINCIDE APPROXIMATELY WITH PANEL JOINTS. REINFORCING STEEL SHALL BE STOPPED 50 mm SHORT OF EITHER SIDE OF THE CONSTRUCTION AND EXPANSION JOINTS. COMPRESSIBLE CORK BOND BREAKER MATERIAL SHALL BE PLACED BETWEEN THE PANELS AND THE COPING TO PREVENT CRACKING.

STATE OF VERMONT AGENCY OF TRANSPORTATION			
Town Of	BENNINGTON	Bridge No.	BR500
Highway No.	VT. RTE. 9	Log Sta.	
		Surv. Sta.	14+900
VT. RTE. 9 OVER AIRPORT BROOK EAST			
MSE WALL - PANEL DETAILS			
Designed By	W. HARRIS	Drawn by	J. FORTE/ B. WEATHERBY
Checked By	M. QUINN	Date	11/01
		Bridge Design Supervisor	M. OLSTAD
		Date	11/01
PROJECT	BENNINGTON-HOOSICK	PROJECT NO.	D.P.J. 0146(1)
I.G.C. Info.			
Bridge Sheet No.	BR530	Sheet	260 OF 473