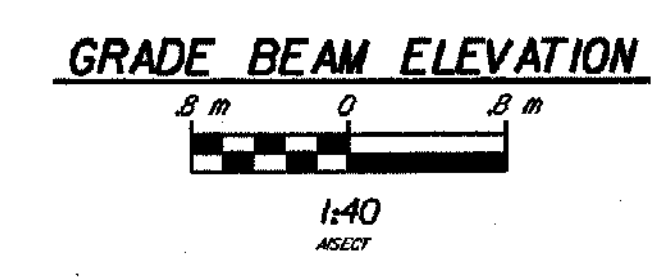
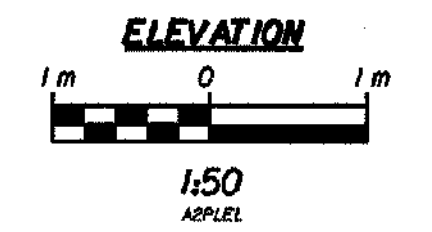
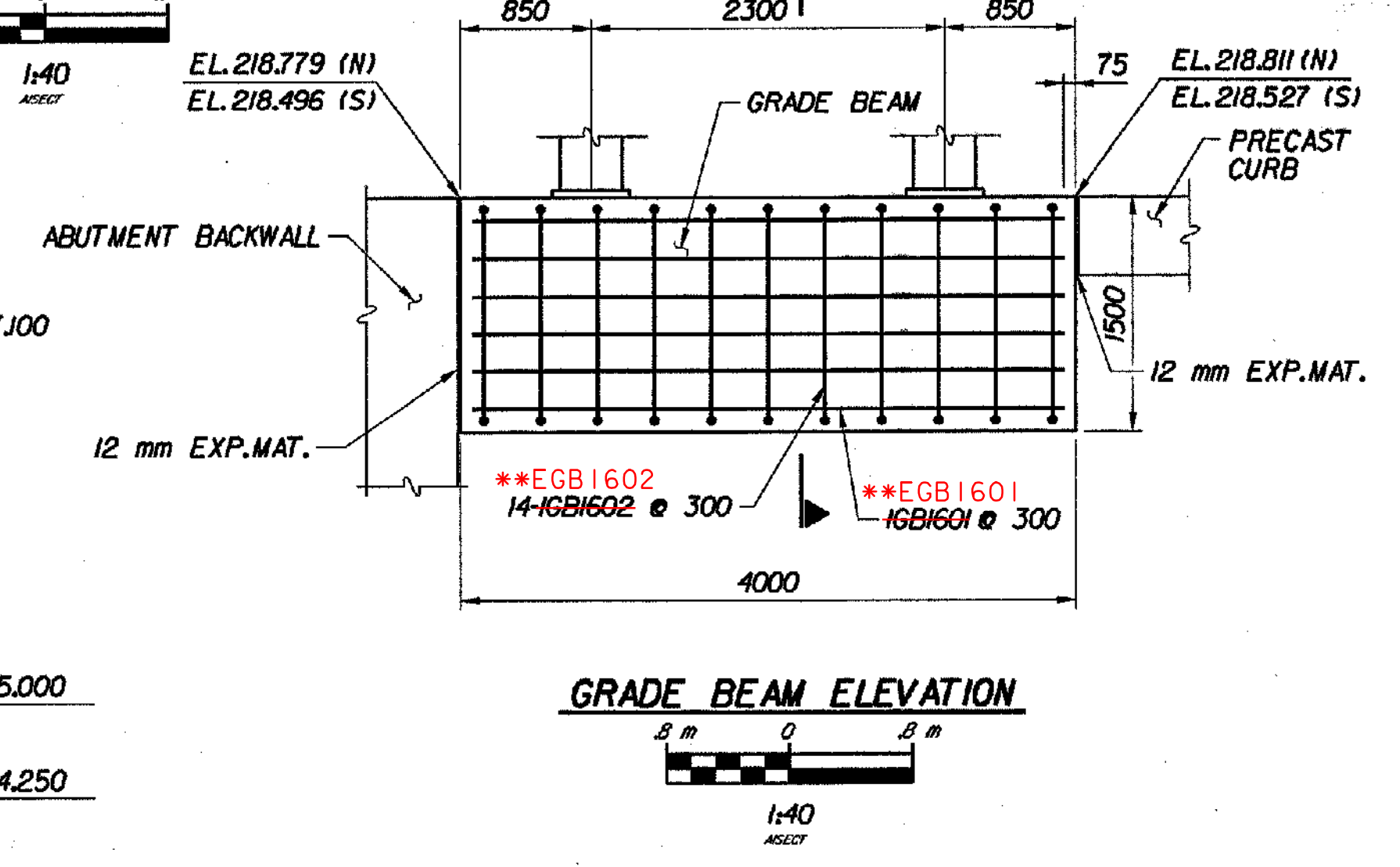
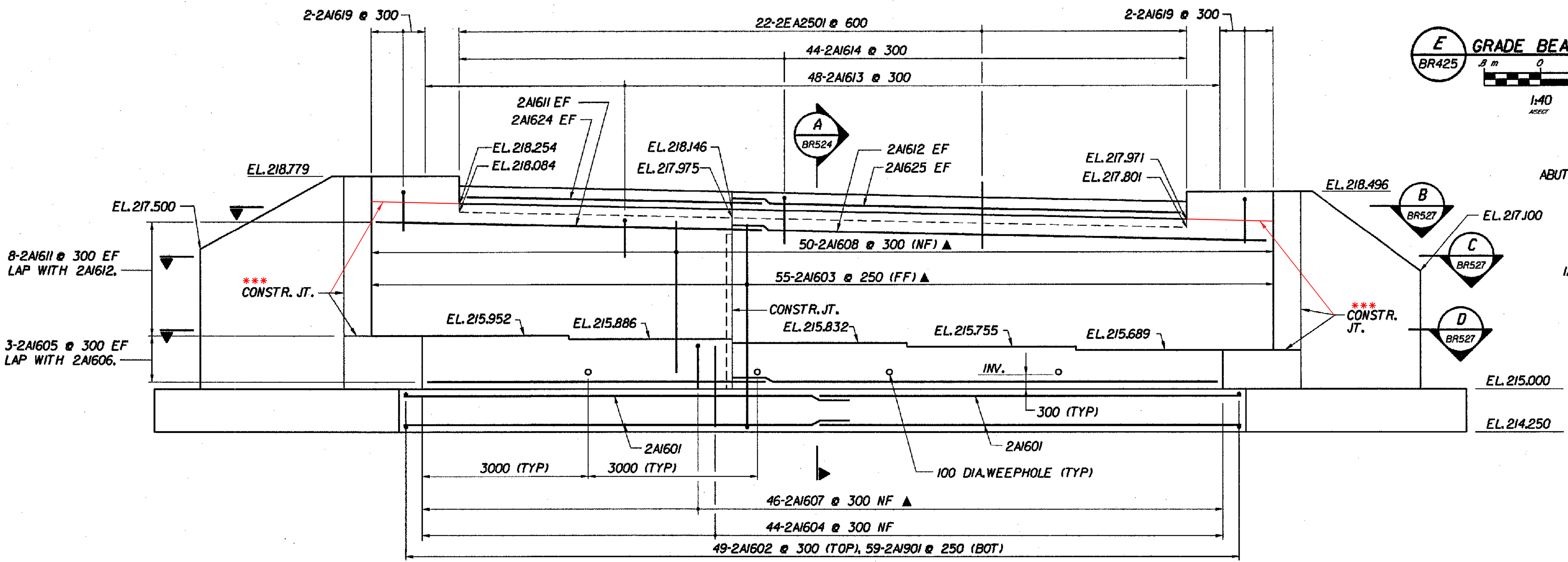
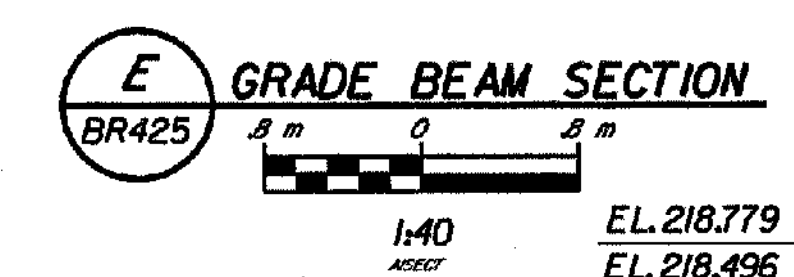
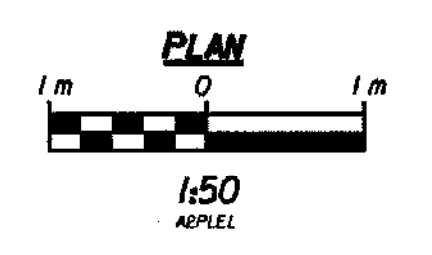
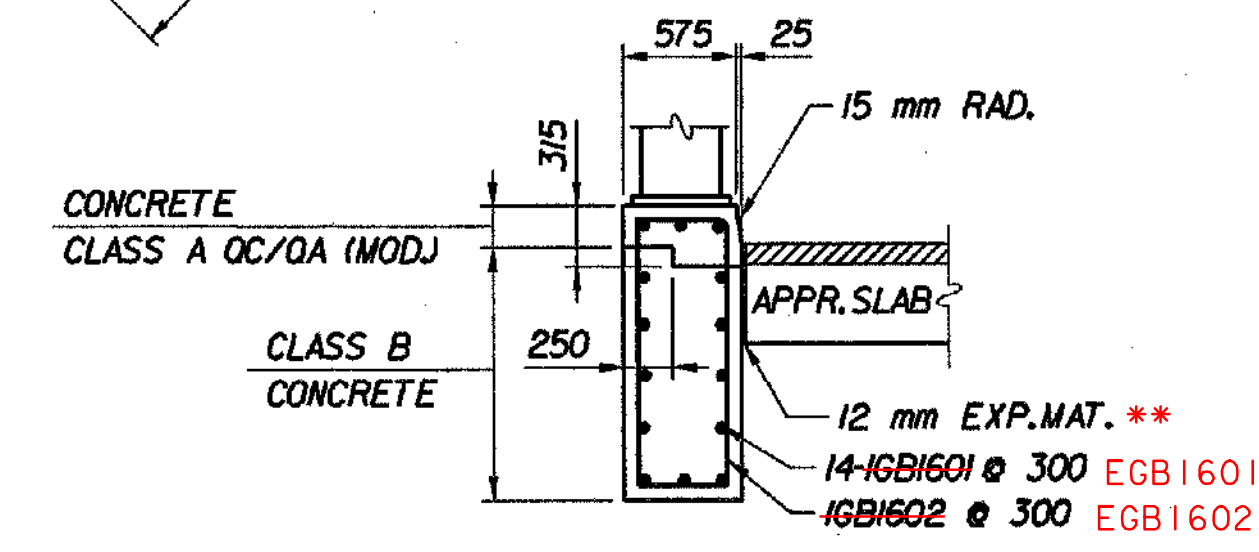
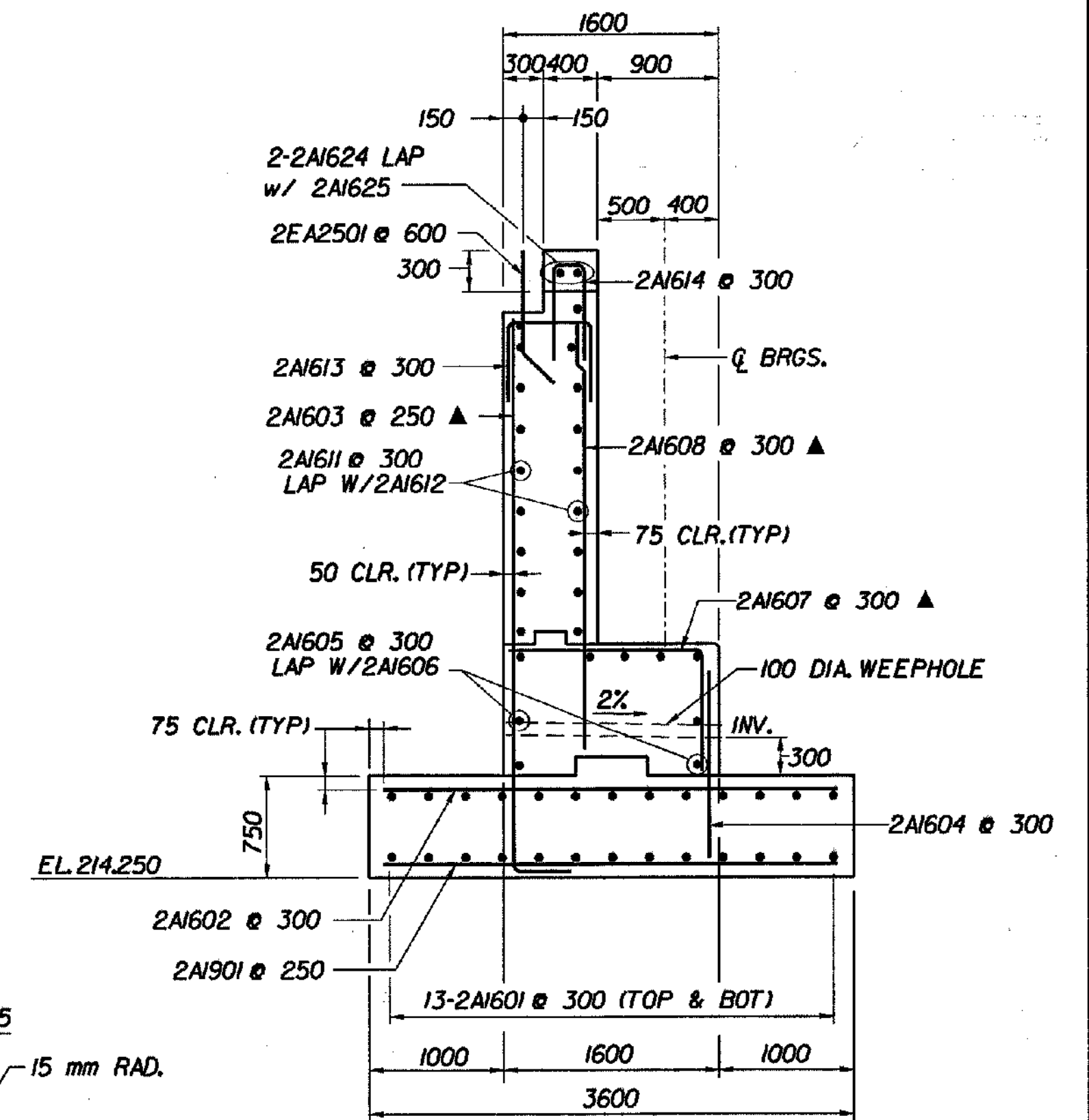


*CAST-IN-PLACE
 PRECAST-REINFORCED-
 CONCRETE CURB TYPE B (TYP.)
 (SLIP FORMED)



- NOTES:**
- NF DENOTES NEAR FACE
 FF DENOTES FAR FACE
 EF DENOTES EACH FACE
 - FOR WEEPHOLE DETAILS, SEE SHEET BR526.
 - ▲ INDICATES BARS TO FIELD CUT.

*PRECAST CURB WAS CHANGED TO CAST-IN-PLACE (SLIP FORMED)
 **GRADE BEAM REINF. WAS CHANGED TO EPOXY COATED (A.O.B.E.)
 ***ADDED CONST. JT.

STATE OF VERMONT AGENCY OF TRANSPORTATION

Town Of	BENNINGTON	Bridge No.	BR500
Highway No.	VT. RTE. 9	Log Sta.	
		Surv. Sta.	I4+900
VT. RTE. 9 OVER AIRPORT BROOK EAST			
ABUTMENT 2 PLAN AND ELEVATION			
Designed By	M. GOGUEN	Drawn by	B. WEATHERBY
Checked By	Date	Bridge Design Supervisor	Date
	P. PERKINS 11/01	M. OLSTAD	Date 11/01
PROJECT	BENNINGTON-HOOSICK		PROJECT NO.
			D.P.J. 0146(1)
I.G.C. Info.			
Bridge Sheet No.	BR524	Sheet	254 OF 473

FILE NAME: u:\3173\1515\br-500\221\br524.plt
 DATE: 11/2/01
 USER: B64