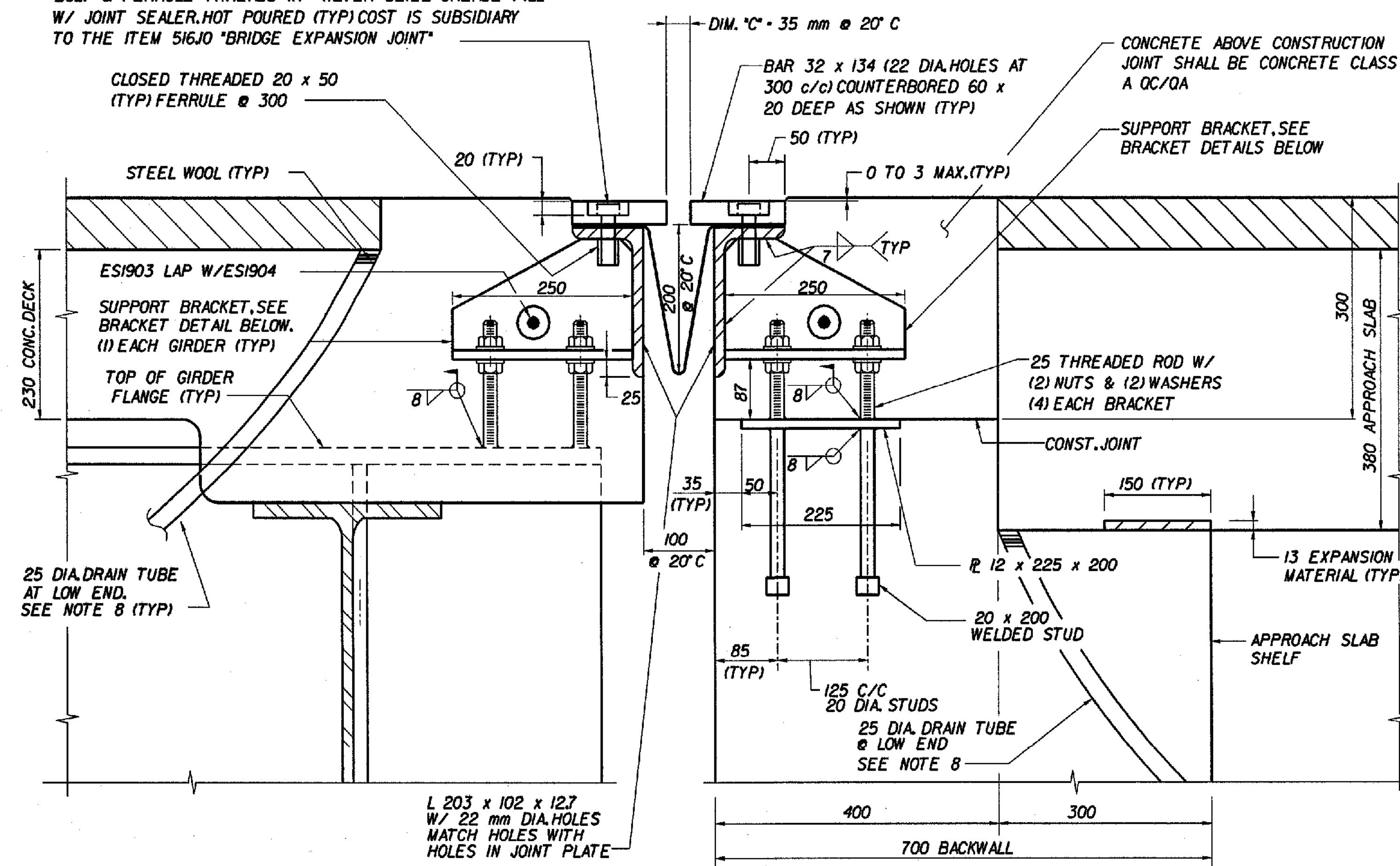
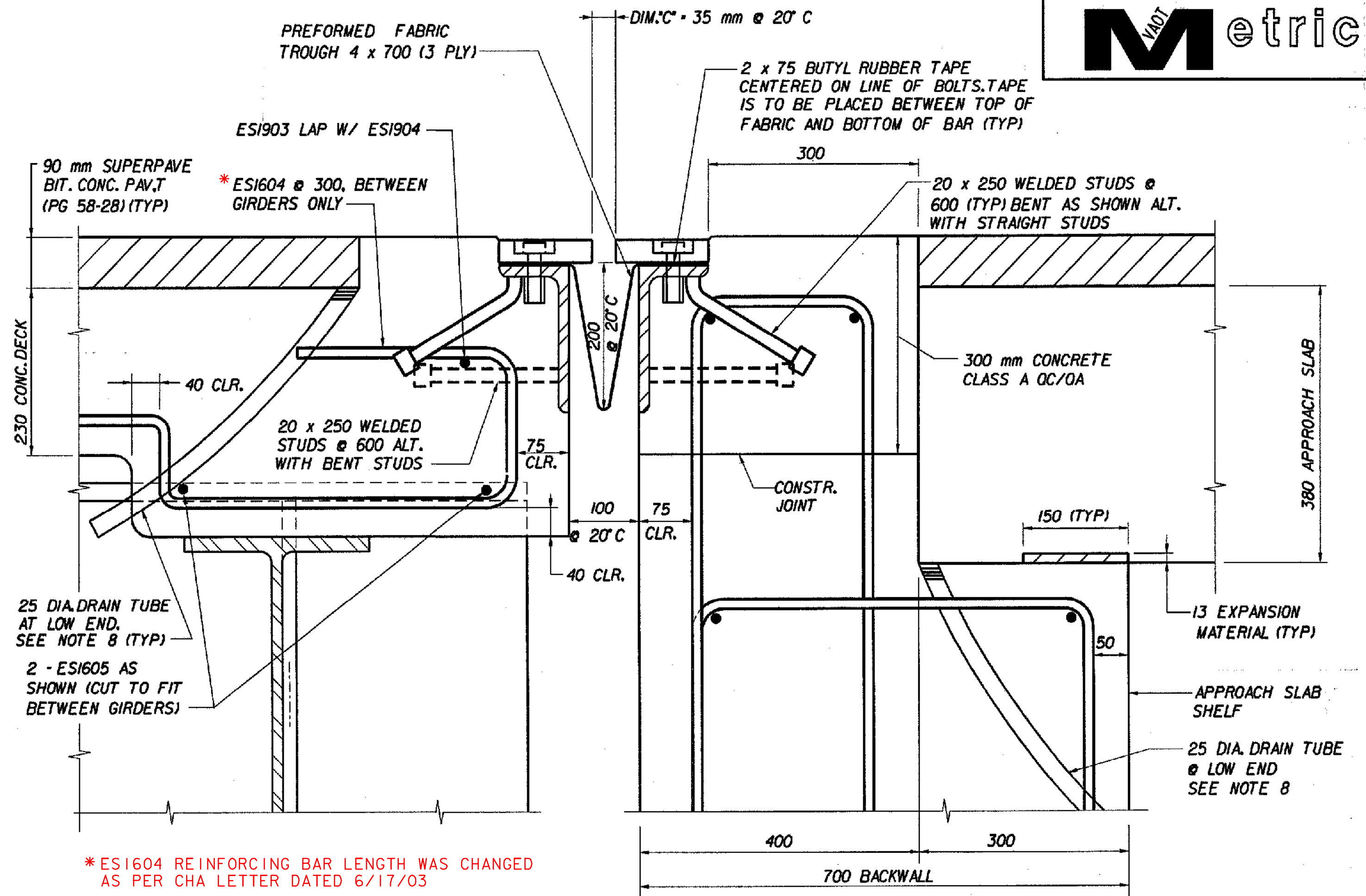


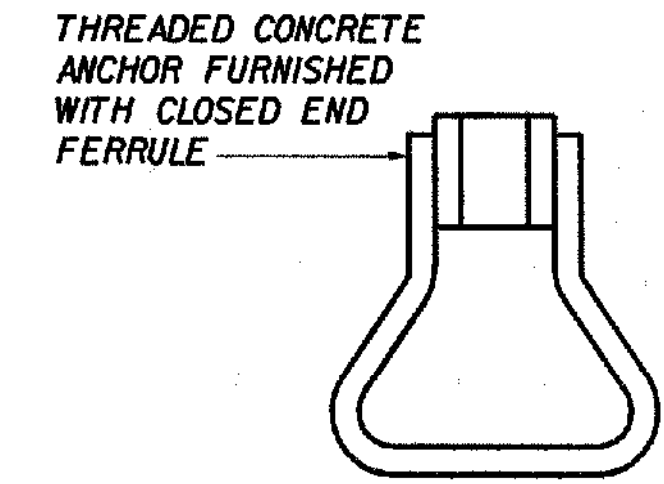
M20x60 HEAVY HEX BOLTS @ 300 (ASTM A325 M) COAT BOLT & FERRULE THREADS W/ 'NEVER SEIZE' GREASE FILL W/ JOINT SEALER. HOT POURED (TYP) COST IS SUBSIDIARY TO THE ITEM 516JO 'BRIDGE EXPANSION JOINT'



B ABUTMENT 2 END SECTION
BR517

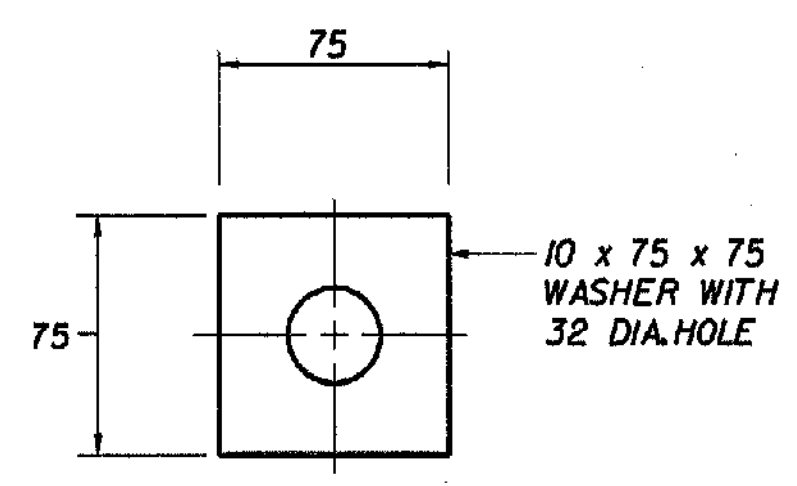


C ABUTMENT 2 END SECTION
BR517

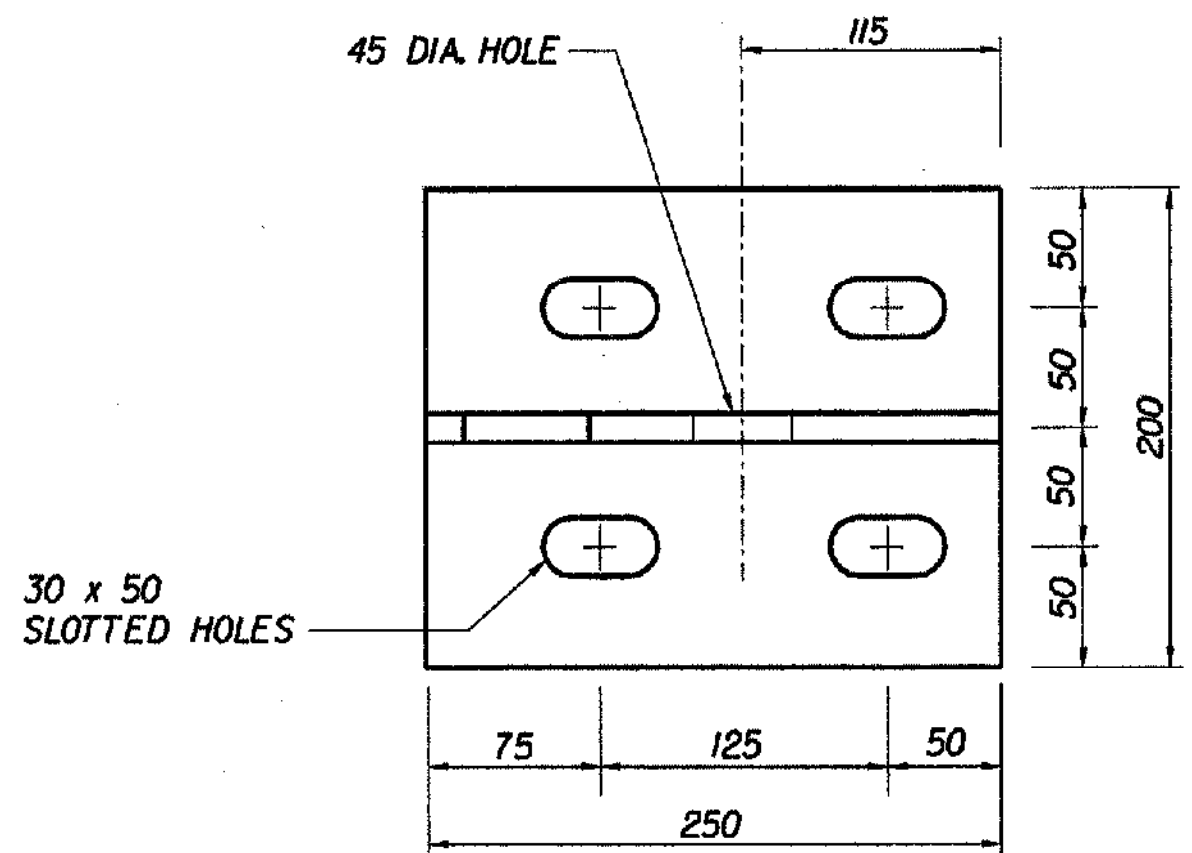


ANCHOR FERRULE DETAIL
N.T.S.

NOTE:
THREADED CONCRETE ANCHORS MAY BE SUBSTITUTED FOR CLOSED THREADED FERRULES



WASHER FOR BRACKET
N.T.S.



BRACKET PLAN
N.T.S.

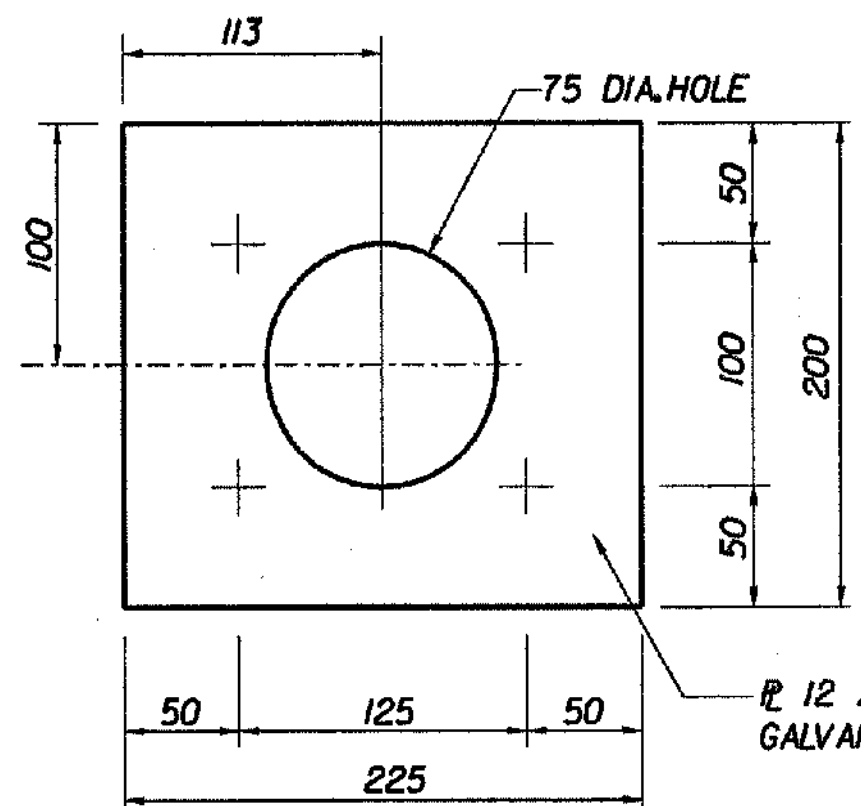
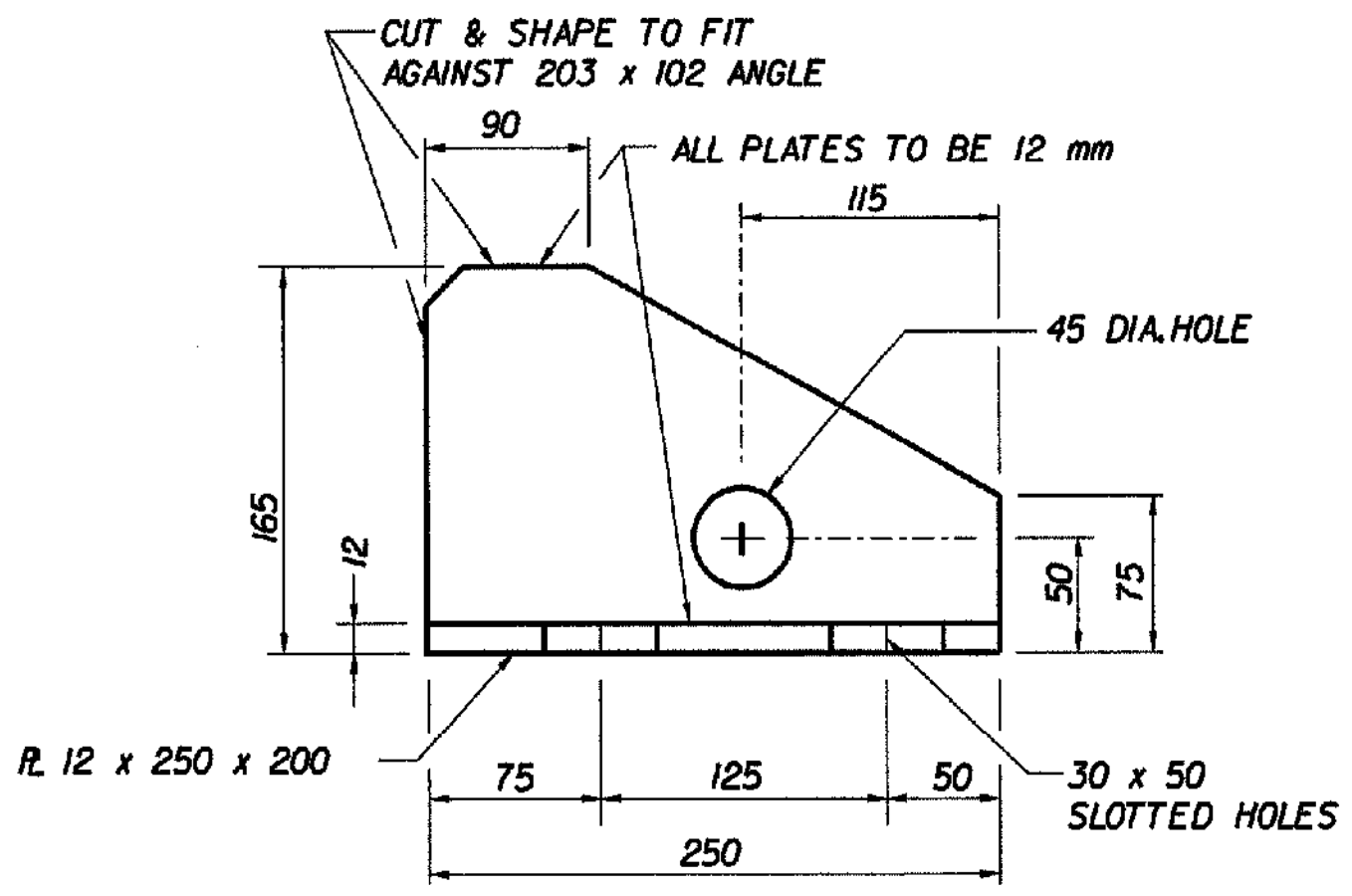


PLATE PLAN VIEW
N.T.S.



BRACKET ELEVATION
N.T.S.

SUPPORT BRACKET DETAILS

TEMP. °C	DIM. °C AT JOINT (mm)
40	24
30	29
20	35
10	40
0	46
-10	51
-20	57

*REINF. BAR LENGTH CHANGE JFW 2/3/06

BRIDGE EXPANSION JOINT NOTES:

- EXPANSION JOINTS SHALL MEET THE REQUIREMENTS OF SECTION 516, EXPANSION DEVICES AND PAID AS ITEM 516JO. BRIDGE EXPANSION JOINT. ALL STRUCTURAL STEEL FOR THE BRIDGE EXPANSION JOINTS SHALL BE AASHTO M 270M, GRADE 250 GALVANIZED OR METALIZED. HIGH STRENGTH BOLTS, NUTS, AND WASHERS SHALL CONFORM TO AASHTO M 164M (ASTM A325M), TYPE 1 GALVANIZED PER SUBSECTION 714.05. THREADED RODS, BOLTS, NUTS AND FERRULES SHALL CONFORM TO SUBSECTION 714.04.
- PERFORMED FABRIC MATERIAL SHALL BE CONTINUOUS AND SHALL CONFORM TO SUBSECTION 707.07.
- BUTYL RUBBER TAPE SHALL CONFORM TO SUBSECTION 707.12.
- THE FINAL FINISH OF THE EXPANSION DEVICE SHALL BE COVERED DURING THE PLACING OF BRIDGE DECK CONCRETE.
- ALL STEEL COMPONENTS SHALL BE AASHTO M 270/M 270, GRADE 250. ALL COMPONENTS EXCEPT 12 x 225 x 200 PLATE ATTACHED TO BACKWALL SHALL BE GALVANIZED OR METALIZED AS PER SUBSECTION 506J5 (a) OR (b) UNLESS OTHERWISE NOTED.
- THE ITEM 516JO 'BRIDGE EXPANSION JOINT' SHALL INCLUDE THE FABRICATION AND ERECTION OF THE COMPLETE JOINT ASSEMBLY INCLUDING ALL STEEL PLATE ANGLES, WELDED STUDS OR RODS, PERFORMED FABRIC MATERIAL, BUTYL RUBBER TAPE AND OTHER MISCELLANEOUS MATERIAL.
- ALL STEEL SURFACES THAT WILL BE EMBEDDED IN CONCRETE SHALL BE COATED WITH AN EPOXY BONDING COMPOUND IN ACCORDANCE WITH SECTION 530. PAYMENT SHALL BE INCLUDED IN THE UNIT PRICE BID FOR ITEM 516JO 'BRIDGE EXPANSION JOINT'.
- THE COST OF 25 mm DIA. PLASTIC TUBE IS SUBSIDIARY TO ITEM 501.221 'CONCRETE CLASS A OC/OA'. CARE SHALL BE TAKEN TO KEEP TUBE CLEAR DURING CONSTRUCTION. THE TOP OF THE DRAIN TUBES SHALL BE TEMPORARILY PLUGGED WITH STEEL WOOL AND RECESSED 6 mm BELOW THE TOP OF THE CONCRETE AND THE BOTTOM LOCATED 150 mm BELOW THE BOTTOM FLANGE OF THE NEAREST GIRDER (LOW SIDE OF BRIDGE). THE TOP OF THE PLASTIC TUBE SHALL BE DRILLED OPEN AFTER CONCRETE PLACEMENT. THE DRAIN TUBES SHALL BE FASTENED TO THE GIRDERS USING A METHOD APPROVED BY THE ENGINEER. PLASTIC TUBING WILL MEET THE REQUIREMENTS OF SUBSECTION 704.01-PLASTIC PIPE, FLEXIBLE.
- FOR CLARITY, NOT ALL REINFORCEMENT IS SHOWN.
- THE 203 x 102 x 127 ANGLE SHALL BE FURNISHED AS ONE CONTINUOUS PIECE. THE 32 x 134 BAR SHALL BE FURNISHED IN TWO EQUAL PIECES.

FILE NAME = 10/11/2001
DATE/TIME = 10/11/2001
USER = 568

STATE OF VERMONT AGENCY OF TRANSPORTATION

Town Of	BENNINGTON	Bridge No.	BR500
Highway No.	VT. RTE. 9	Log Sta.	
		Surv. Sta.	14+900
VT. RTE. 9 OVER AIRPORT BROOK EAST			
BRIDGE JOINT DETAILS-2			
Designed By	M. GOGUEN	Drawn by	B. WEATHERBY
Checked By	Date	Bridge Design Supervisor	Date
	P. PERKINS 11/01	M. OLSTAD	11/01
PROJECT	BENNINGTON-HOOSICK	PROJECT NO.	D.P.I. 0146(1)
I.G.C. Info.			
Bridge Sheet No.	BR518	Sheet	248 OF 473