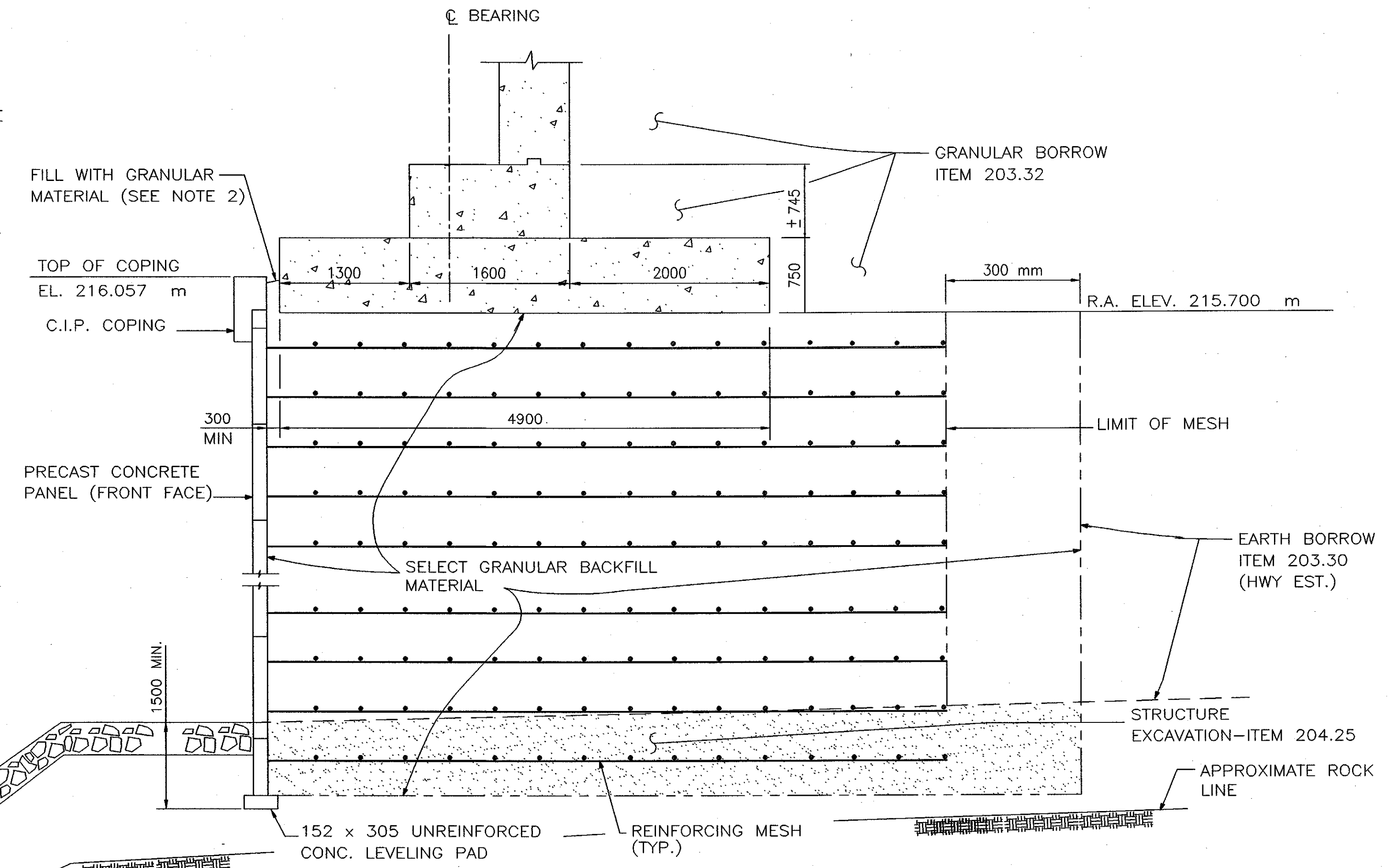


TYPICAL SECTION THRU WINGWALL

N.T.S.

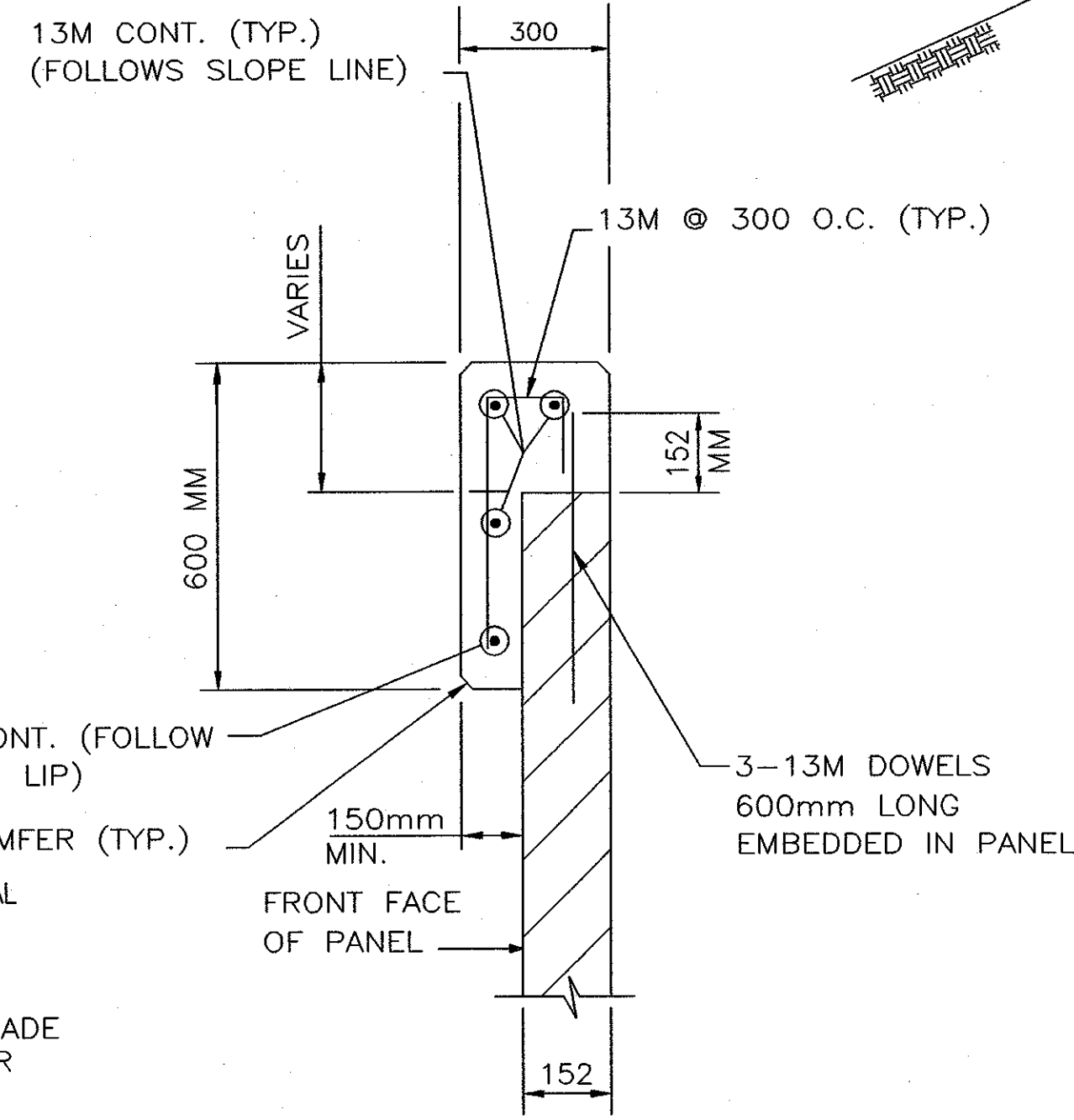
NOTE:

1. GEOTEXTILE FOR ROADBED SEPARATOR, GRANULAR MATERIAL, GEOTEXTILE UNDER STONE FILL, AND PVC GEOMEMBRANE SHALL BE INSTALLED TO A LIMIT 8 m FROM THE BENT POINT IN THE MSE WALL TOWARD THE CENTERLINE OF HIGHWAY TO THE LIMITS OF THE MSE WINGWALL. SEE MSE WALL SITE PLAN AND GENERAL NOTES.
2. THE COST OF PROVIDING THESE ITEMS SHALL BE IN THE SQUARE METER COST FOR ITEM 526.30 MECHANICALLY STABILIZED EARTH (MSE) WALL WITH ASHLAR STONE WALL PANEL FACING (MOD.).
3. CONTRACTOR SHALL COORDINATE CONSTRUCTION OF TYPE I AND TYPE II SETTLEMENT PLATFORMS AND INCLINOMETERS WITH MSE WALL CONSTRUCTION. INSTRUMENTATION WILL BE PAID FOR UNDER ITEM 623.21 TYPE I SETTLEMENT PLATFORM, ITEM 623.23 TYPE II SETTLEMENT PLATFORM, AND ITEM 623.30 INCLINOMETER.
4. DIMENSION UNITS ARE IN mm.



TYPICAL SECTION THRU ABUTMENT WALL 1

N.T.S.



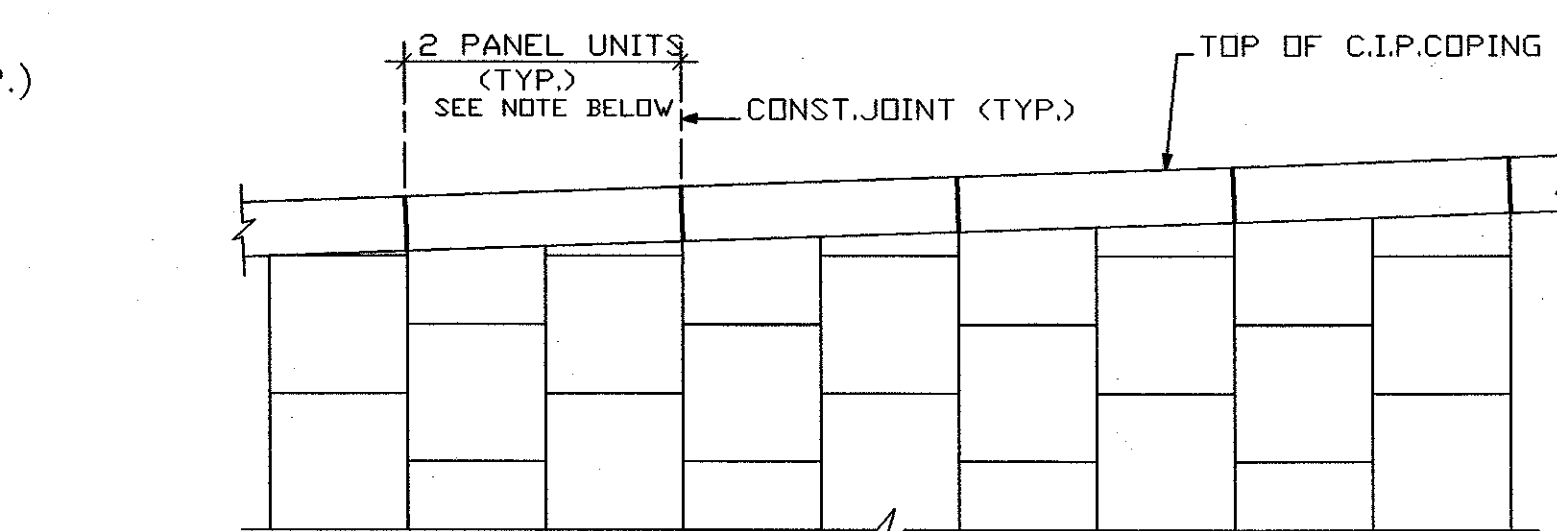
C.I.P. COPING DETAIL

N.T.S.

NOTE:

- PLACE CONSTRUCTION JOINT IN COPING TO INTERSECT EVERY OTHER PANEL JOINT. STEEL IS NOT CONTINUOUS. ALL STEEL TO BE EPOXY COATED.

CERTIFIED FOR INTERNAL STABILITY OF RETAINED EARTH™ STRUCTURES ONLY. EXTERNAL STABILITY, INCLUDING BUT NOT LIMITED TO FOUNDATION AND SLOPE STABILITY, IS THE RESPONSIBILITY OF THE OWNER. DESIGN IS BASED ON THE ASSUMPTION THAT THE MATERIAL WITHIN THE RETAINED EARTH™ MASS, METHODS OF CONSTRUCTION, AND QUALITY OF PREFABRICATED MATERIALS CONFORM TO THE MANUFACTURER'S SPECIFICATION.

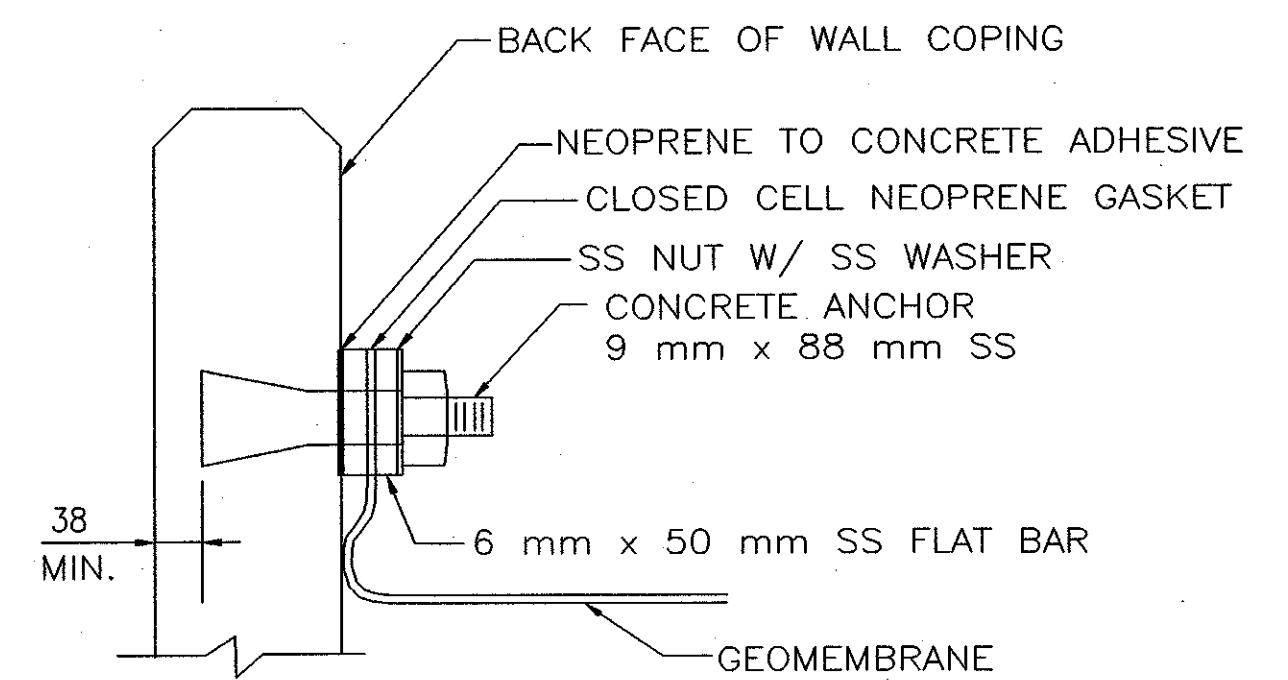


C.I.P. COPING PARTIAL ELEVATION

N.T.S.

NOTE:

- JOINTS IN C.I.P. COPING TO BE AT TWO PANEL INTERVALS. COPING JOINTS MUST COINCIDE WITH PANEL JOINTS, ON FRONT FACE, WHERE BOTTOM OF 102mm LIP INTERSECTS WITH PANEL JOINTS. COPING JOINTS TO BE PERPENDICULAR TO SLOPE OF COPING. REINFORCING STEEL SHALL BE STOPPED 50mm SHORT OF EITHER SIDE OF THE CONSTRUCTION JOINT.

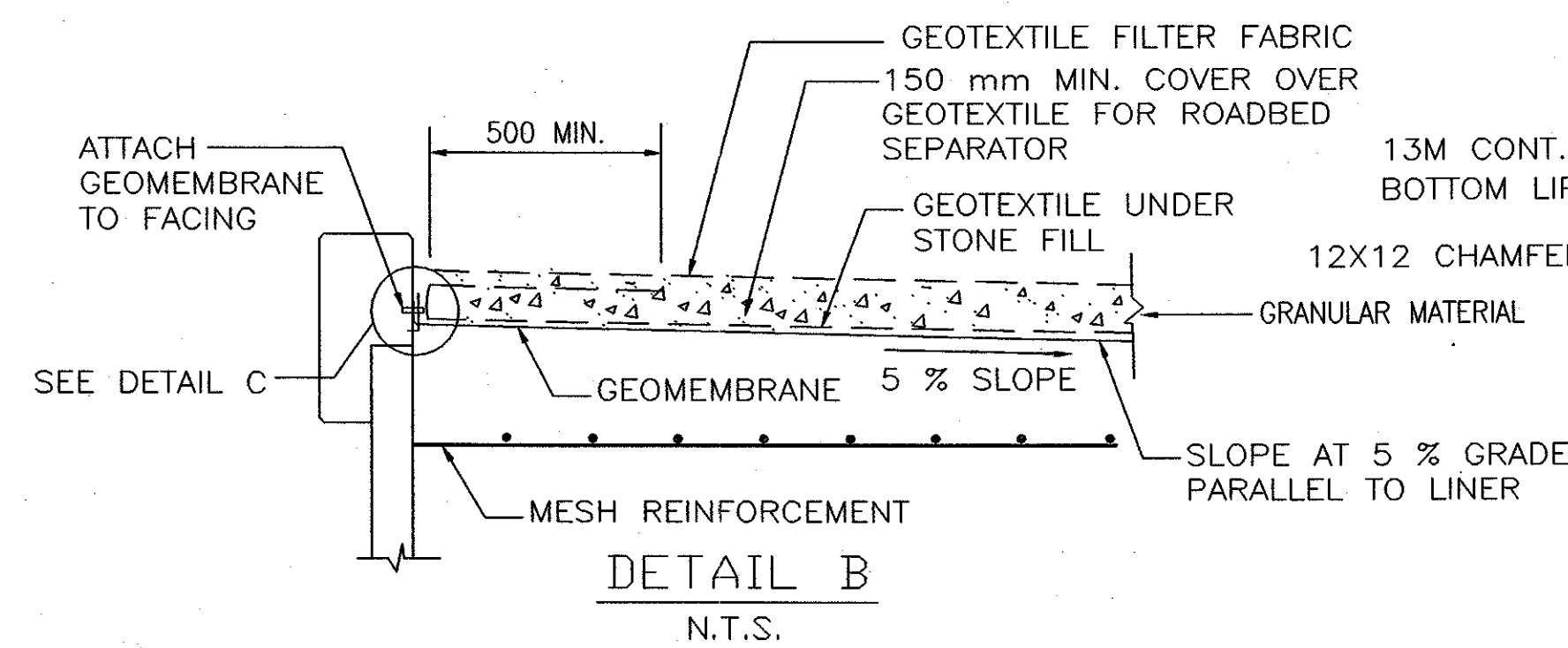


DETAIL C

N.T.S.

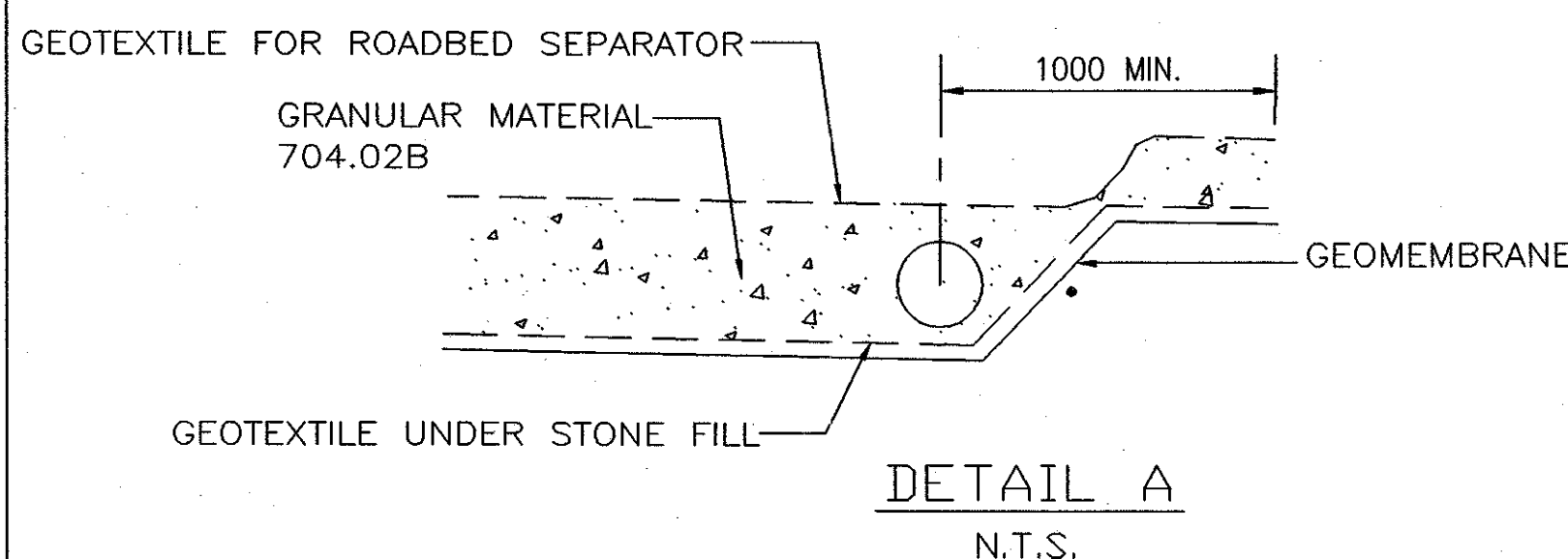
NOTE:

- ALL DIMENSIONS ARE SHOWN IN MILLIMETERS (mm) UNLESS OTHERWISE NOTED



DETAIL B

N.T.S.



DETAIL A

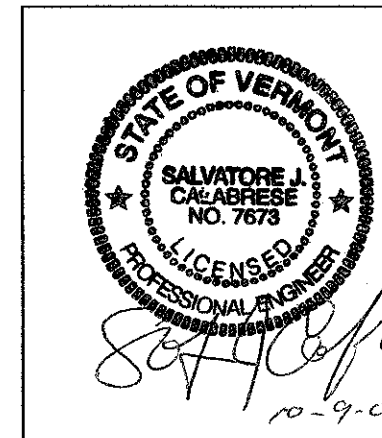
N.T.S.

STATE OF VERMONT AGENCY OF TRANSPORTATION

Town Of	BENNINGTON	Bridge No.	BR400
Highway No.	VT. RTE. 9	Log Sta.	
		Surv. Sta.	14+140
VT. RTE. 9 OVER AIRPORT BROOK WEST			

TYPICAL CROSS SECTION AND DETAILS

Designed By	I. LIONG	Drawn By	I. LIONG
Checked By	Date	Bridge Design Supervisor	Date
L. CLAY/M. MAGARELLI	11/99		
PROJECT	BENNINGTON-HOOSICK	PROJECT NO.	D.P.I. 0146(1) C/3
I.G.C. Info.			
Bridge Sheet No.	BR434	Sheet	223 of 473



Foster Geotechnical claims a strict proprietary right in all drawings, specifications and calculations ("Information") set forth on this sheet. The use of such information in whole or in part, or any reproduction thereof, is restricted to the site for which it was prepared and to the material and/or service provided by Foster Geotechnical. Any other use is strictly prohibited, and Foster Geotechnical disclaims any LIABILITY THEREFOR.

A Division of L. B. Foster Company
 1372 Old Bridge Road, Suite 101, Woodbridge, VA 22192
 Telephone: (703) 499-9818 / Fax: (703) 499-9348
 SAN DIEGO, CA / WOODBRIDGE, VA / NORCROSS, GA