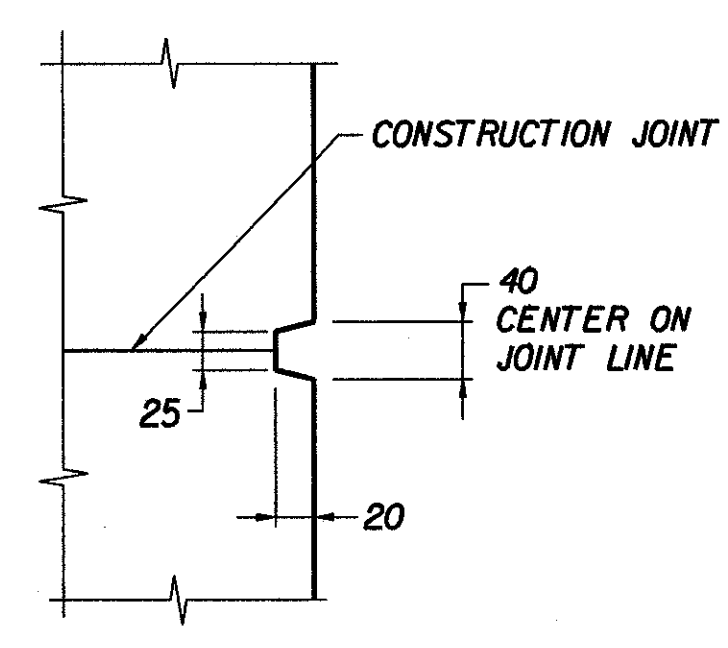
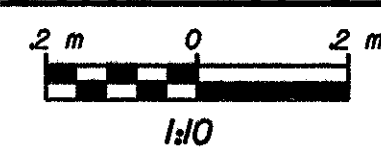
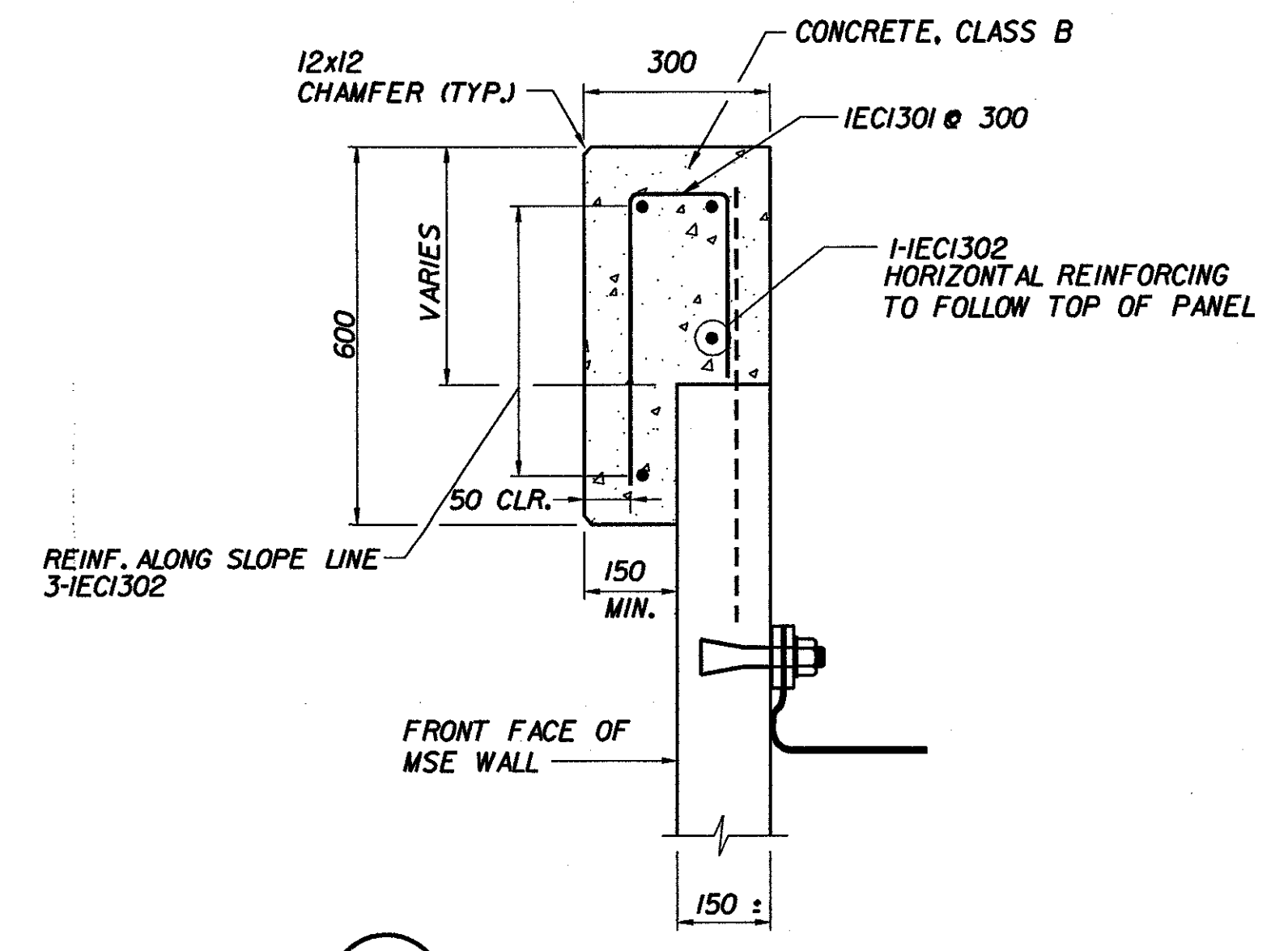


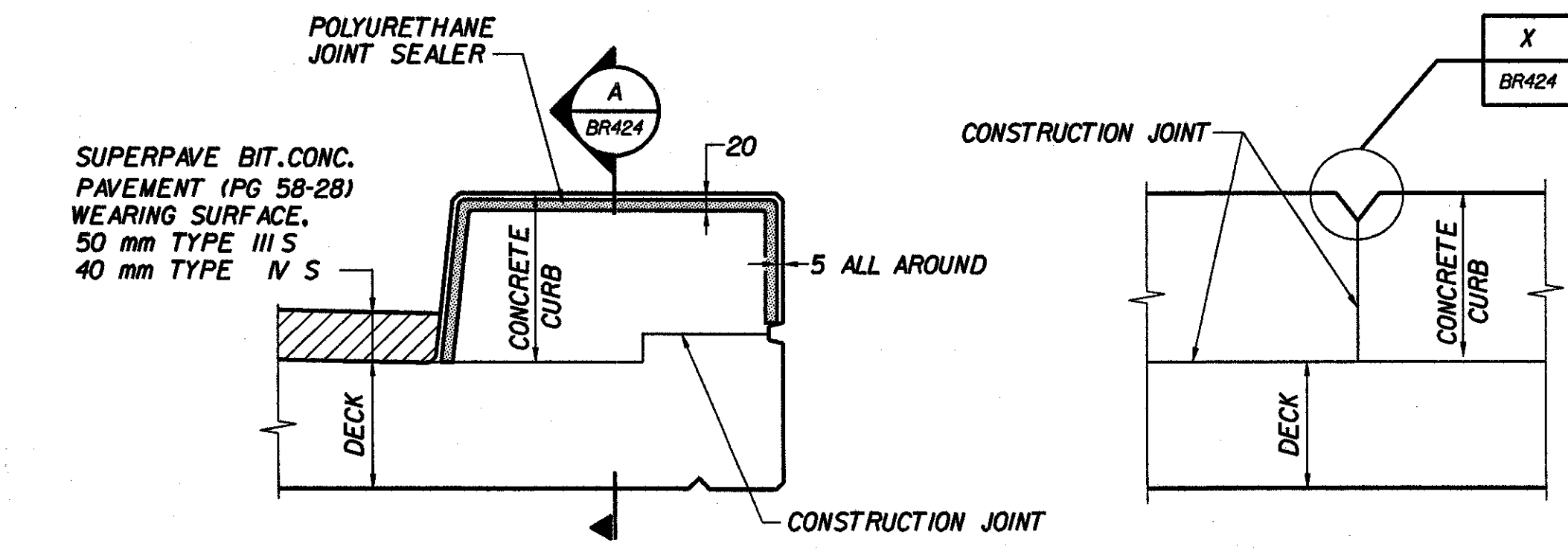
TYPICAL 600 mm CURB SECTION



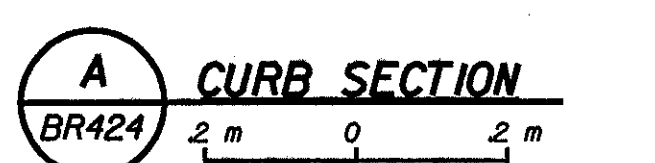
SCORE MARK DETAIL
N.T.S.



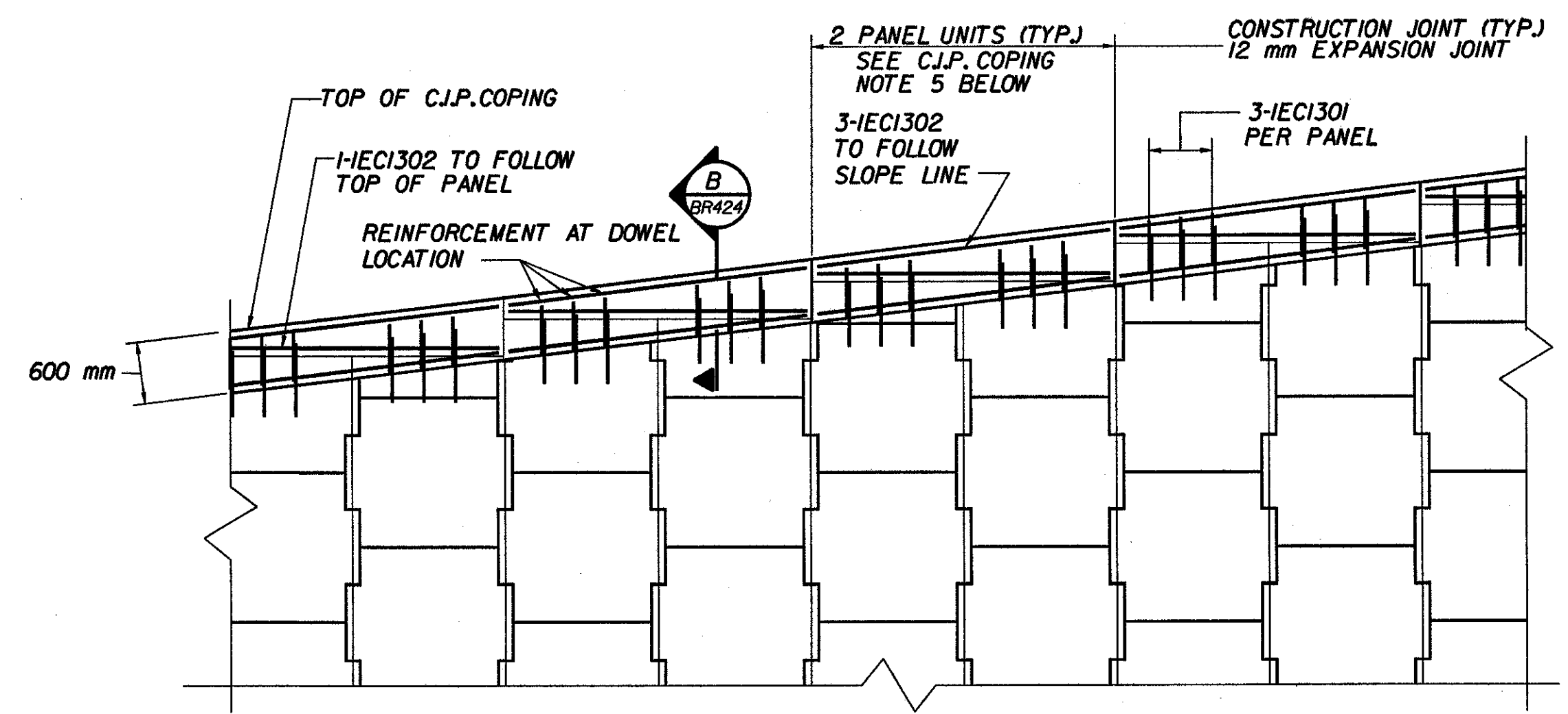
B CAST-IN-PLACE COPING
N.T.S.



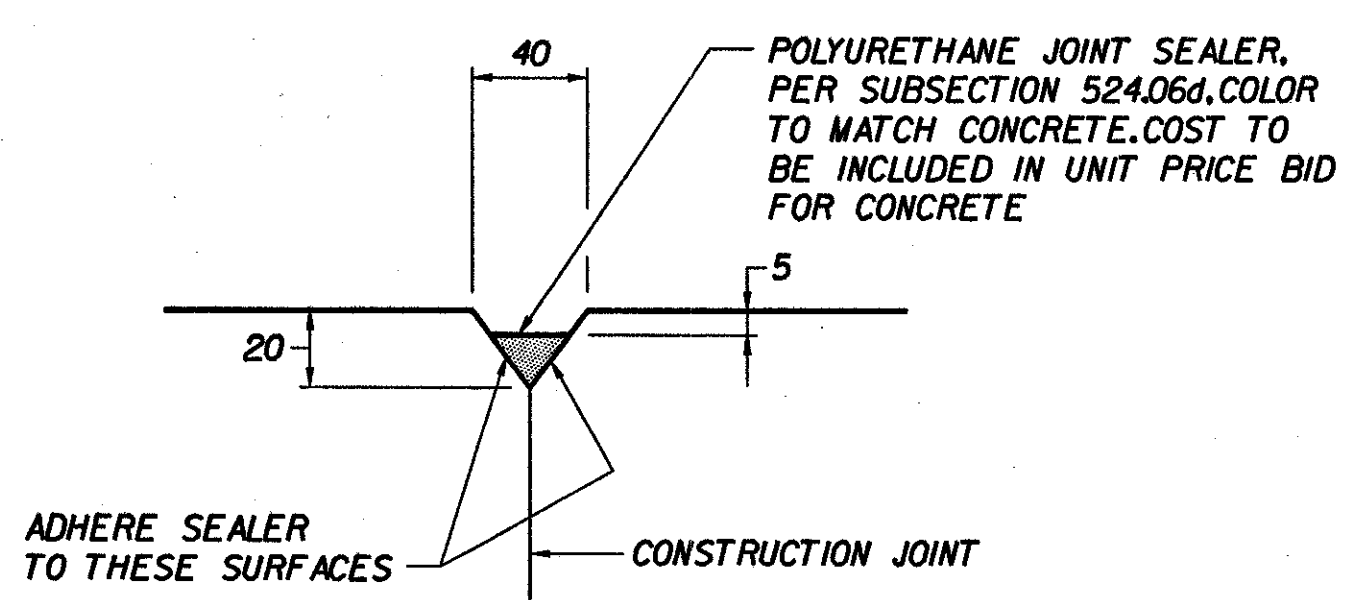
TYPICAL SECTION THROUGH CONCRETE CURB CONSTRUCTION JOINT



A CURB SECTION
N.T.S.



C.I.P. COPING (3 DOWELS) PARTIAL ELEVATION
N.T.S.



X CURB JOINT DETAIL
N.T.S.

CURB NOTES:

1. TWO COMPONENT POLYURETHANE MATERIAL SHALL BE PLACED 100 mm WIDE ALONG DECK, 75 mm UP FACE OF CURB AND ALONG CONCRETE SHOULDER AT EXPANSION JOINT. SEE SPEC. 919.05 (b). POLYURETHANE MATERIAL AND BLAST CLEANING SHALL BE INCLUDED IN THE UNIT BID FOR SHEET MEMBRANE WATERPROOFING (TORCH APPLIED) (MOD.).
2. BLAST CLEAN 1000 mm FROM FACE OF CURB AND 95 mm UP CURB FACE PRIOR TO PLACING MEMBRANE.
3. CONSTRUCTION JOINTS THROUGH CONCRETE CURBS SHALL BE PLACED A MAXIMUM 4.50 m CENTER TO CENTER AND SHALL BE 500 mm MINIMUM FROM THE CENTER OF THE NEAREST BRIDGE RAIL POST. CONCRETE SHALL BE PLACED IN ALTERNATING SECTIONS WITH A MINIMUM OF 48 HOURS DELAY BETWEEN ADJACENT POURS.
4. LONGITUDINAL REINFORCING BARS SHALL PASS THROUGH CURB CONSTRUCTION JOINTS.
5. SEE SHEET BR415 FOR GIRDER HAUNCH AND SHEAR CONNECTOR DETAIL.
6. A 15 mm RADIUS MAY BE USED IN LIEU OF THE 25 mm BY 25 mm CHAMFER ON THE TOP INSIDE CORNER OF CURBS.

CAST-IN-PLACE COPING NOTES:

1. COPING SHALL BE CONCRETE, CLASS B - ITEM 501.25 COLOR TO MATCH MSE WALL PANEL COLOR. THE FEDERAL SPECIFICATION COLOR FOR THE PRECAST CONCRETE IS AS FOLLOWS: FEDERAL SPECIFICATION COLOR 7690-01-162-2210; FEDERAL STANDARD 595B COLORS (JULY 1994); PRECAST PLANT COLOR 24670.
2. REINFORCING SHALL CONFORM TO SECTION 713.01 AND SHALL BE EPOXY COATED.
3. ALL LONGITUDINAL BARS ARE #13.
4. THE CONTRACTOR SHALL EXERCISE CARE NOT TO STAIN THE MSE WALL PANELS WHEN PLACING CAST-IN-PLACE CONCRETE COPING. THE COST OF REMOVING STAINS SHALL BE AT THE CONTRACTOR'S EXPENSE.
5. JOINTS IN COPING SHALL BE AT 2 PANEL INTERVALS AND COINCIDE APPROXIMATELY WITH PANEL JOINTS. REINFORCING STEEL SHALL BE STOPPED 50 mm SHORT OF EITHER SIDE OF THE CONSTRUCTION AND EXPANSION JOINTS. COMPRESSIBLE CORK BOND BREAKER MATERIAL SHALL BE PLACED BETWEEN THE PANELS AND THE COPING TO PREVENT CRACKING.

STATE OF VERMONT		AGENCY OF TRANSPORTATION	
Town of	BENNINGTON	Bridge No.	BR400
Highway No.	VT. RTE. 9	Log Sta.	
		Surv. Sta.	14+140
VT. RTE. 9 OVER AIRPORT BROOK WEST			
CURB AND COPING DETAILS			
Designed By	M. GOGUEN	Drawn by	B. WEATHERBY/K. DETRICK
Checked By	Date	Bridge Design Supervisor	Date
	P. PERKINS 11/01	M. OLSTAD	Date 11/01
PROJECT	BENNINGTON-HOOSICK		PROJECT NO.
			D.P.L. 0146(1)
I.G.C. Info.			
Bridge Sheet No.	BR424	Sheet	213 OF 473