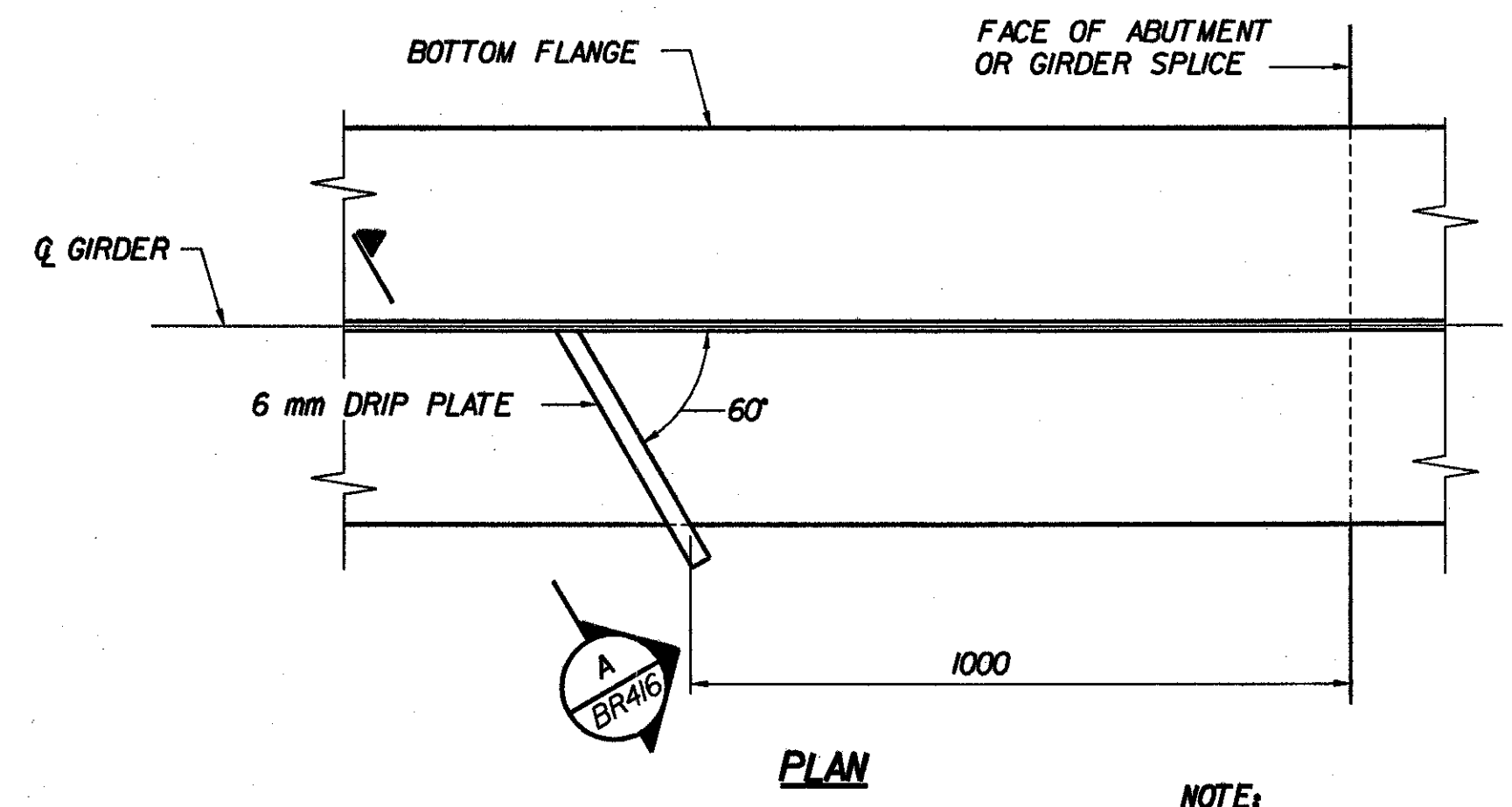


ABUTMENT BEARING STIFFENERS FOR WELDED PLATE GIRDERS
NTS

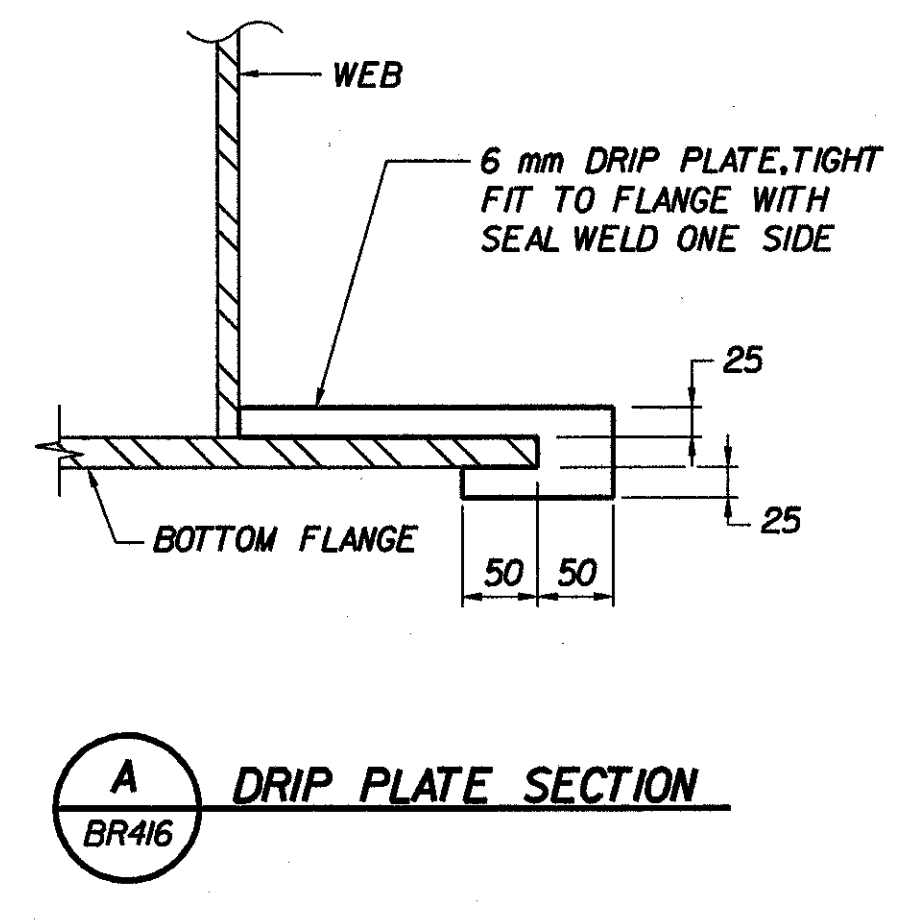
INTERMEDIATE STIFFENER PLATES FOR WELDED PLATE GIRDER
NTS

CONNECTION PLATE-INTERIOR
NTS

CONNECTION PLATE-FASCIA
NTS



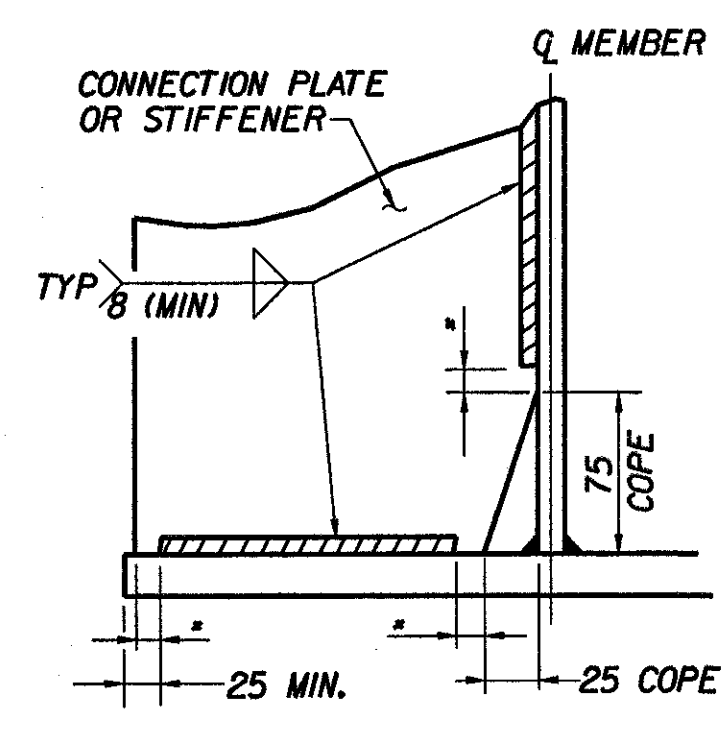
PLAN



DRIP PLATE SECTION

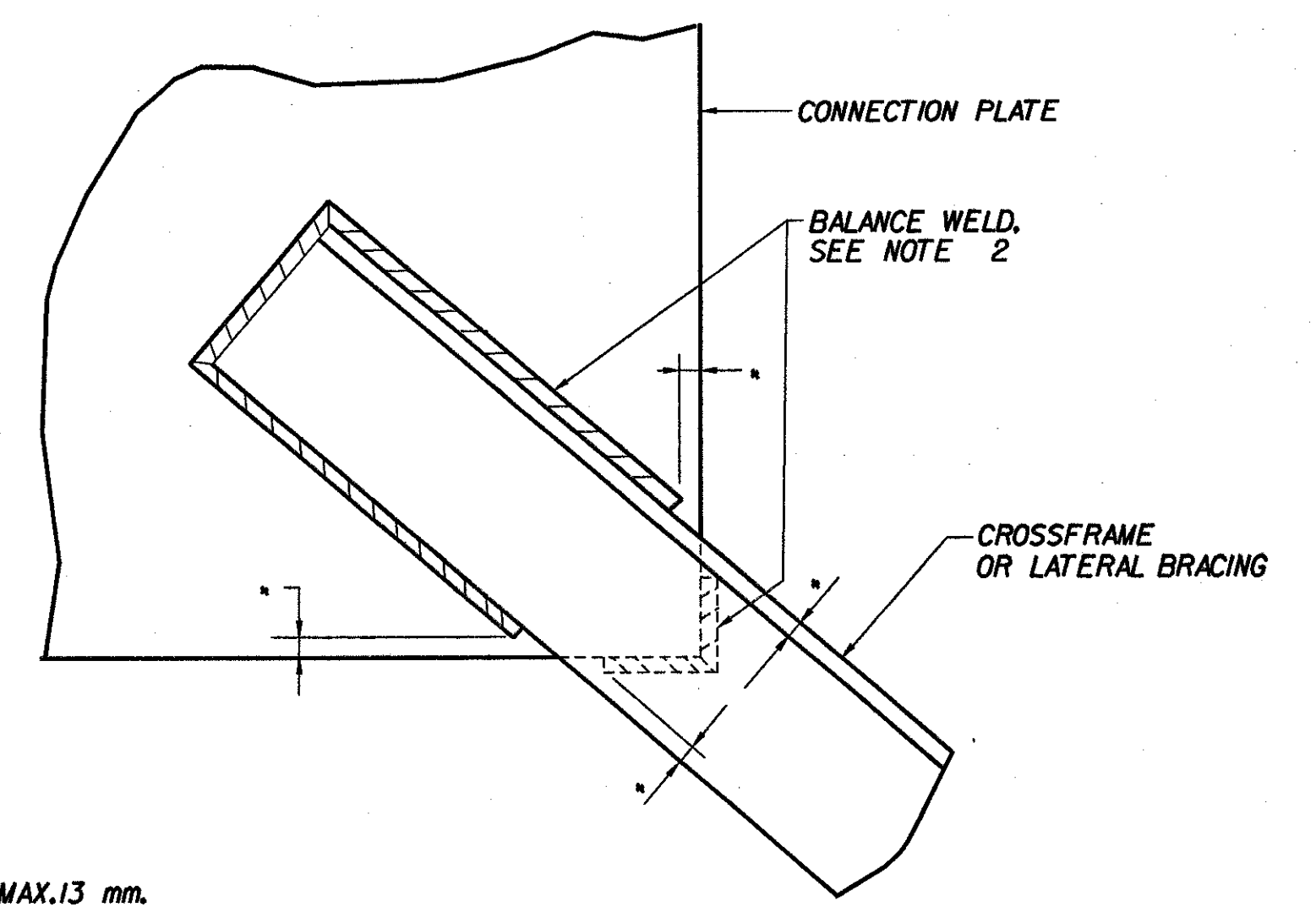
NOTE:
DRIP PLATES SHALL BE PLACED ON OUTSIDE EDGE OF FASCIA GIRDERS AS INDICATED ON THE FRAMING PLAN

Q	DRIP PLATE DETAILS
BR413	
BR415	



WELD TERMINATION AND COPING DETAILS FOR STEEL MEMBERS
NTS.

* NO WELD FOR MIN. 7 mm, MAX. 13 mm.
(EXCEPT MUST MAINTAIN 25 MINIMUM FROM EDGE OF FLANGE)



WELD LOCATION DETAIL AT CROSSFRAMES
NTS.

- NOTES:**
1. ALL CONNECTIONS SHALL BE MADE USING M22 DIAMETER AASHTO M164M BOLTS. ALL HOLES IN THE CONNECTION PLATES SHALL BE 24 mm DIAMETER.
 2. THE LENGTH OF WELD ON EACH SIDE OF THE ANGLE SHALL BE PROPORTIONAL TO MINIMIZE ECCENTRICITIES IN THE CONNECTION

STATE OF VERMONT AGENCY OF TRANSPORTATION

Town Of	BENNINGTON	Bridge No.	BR400
		Log Sta.	
Highway No.	VT. RTE. 9	Surv. Sta.	14+140
VT. RTE. 9 OVER AIRPORT BROOK WEST			
GIRDER ELEVATION			
Designed By	M. GOGUEN	Drawn by	B. WEATHERBY/K. DETRICK
Checked By	Date	Bridge Design Supervisor	Date
	P. PERKINS 11/01	M. OLSTAD	Date 11/01
PROJECT	BENNINGTON-HOOSICK	PROJECT NO.	D.P.I. 0146(1)
I.G.C. Info.			
Bridge Sheet No.	BR416	Sheet	205 OF 473