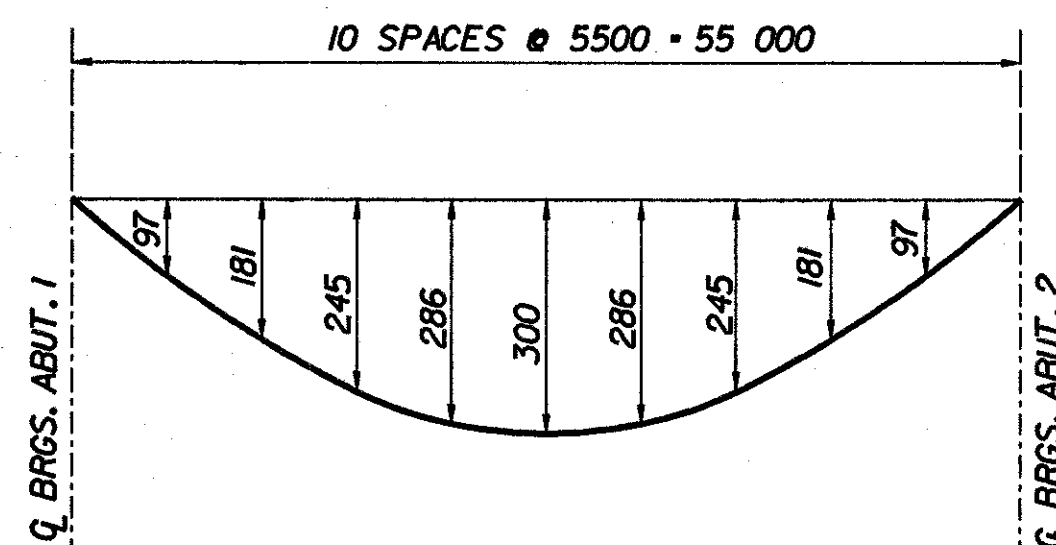
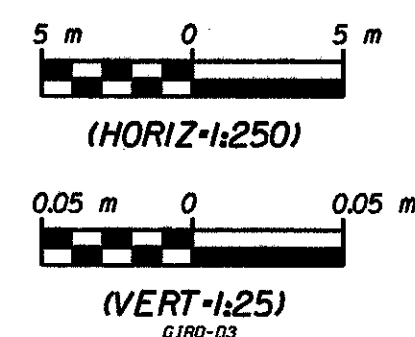
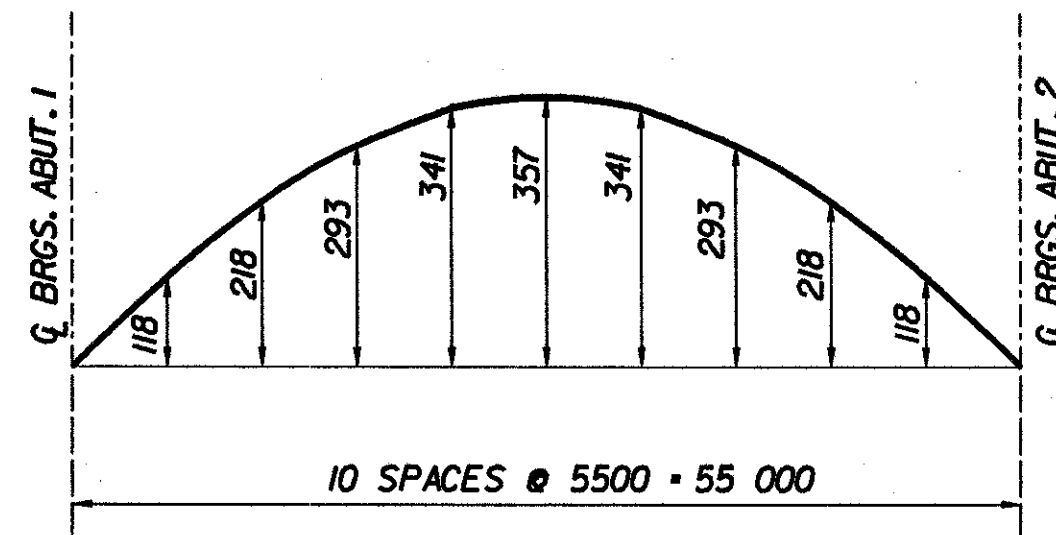


CVN - DENOTES CHARPY V-NOTCH TEST REQUIRED, SEE NOTE 8.

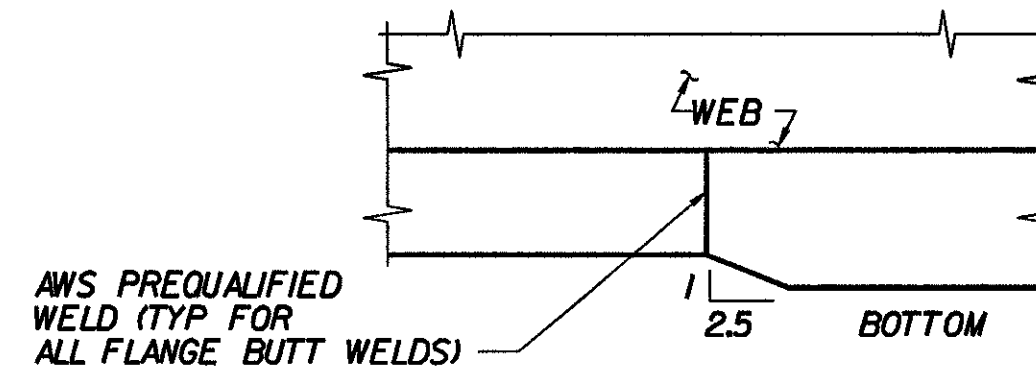
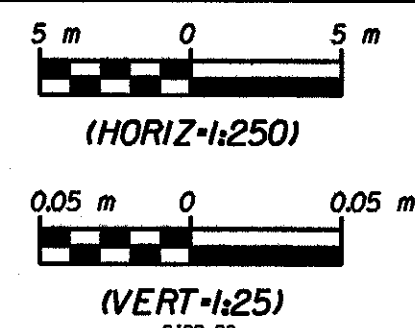
NOTES:

1. ALL STRUCTURAL STEEL SHALL BE AASHTO M270M GR 345W UNLESS OTHERWISE NOTED.
2. ALL BEARING STIFFENER PLATES SHALL BE VERTICAL IN THEIR FINAL ERECTED POSITION.
3. ENDS OF GIRDERS SHALL BE FABRICATED SO THAT THE ENDS WILL BE VERTICAL UNDER FULL DEAD LOAD.
4. IN AREAS OF UNPAINTED STEEL CONTACT SURFACES OF BOLTED CONNECTIONS SHALL BE BLAST CLEANED IF RUSTED BEFORE CONNECTION IS MADE. IN AREAS OF PAINTED STEEL, PRIMER SHALL REMAIN ON THE SURFACES OF STEEL CONNECTION CONTACTS.
5. TOP OF STUDS SHALL EXTEND ABOVE BOTTOM LAYER OF DECK REINFORCEMENT.
6. FOR CROSSFRAME DETAILS, SEE SHEET BR414.
7. BUTT WELDED FLANGE PLATES SHALL BE OFFSET 1600 mm FROM BUTT WELDED WEB PLATES.
8. ALL MEMBERS OR PLATES (AND ONLY THOSE MEMBERS OR PLATES) IDENTIFIED WITH THE CVN DESIGNATION MUST MEET THE CHARPY V-NOTCH REQUIREMENTS FOR MAIN MEMBERS AS INDICATED IN SECTION 714 OF THE STANDARD SPECIFICATIONS.
9. THE GIRDERS AND ALL OTHER STEEL COMPONENTS, INCLUDING CROSSFRAMES AND CONNECTION PLATES, THAT ARE A DISTANCE OF 2.60 m FROM THE END OF THE GIRDER (ABUTMENT 1 ONLY) SHALL BE COATED WITH A PROTECTIVE SYSTEM ACCORDING TO SUPPLEMENTAL SECTION 513.
10. SHOP DRAWINGS AND BEAM PROFILES SHALL BE SENT TO DALE GOZALKOWSKI, CLOUGH HARBOUR & ASSOCIATES 111 WINNERS CIRCLE, P.O. BOX 5269, ALBANY NEW YORK 12205-0269.

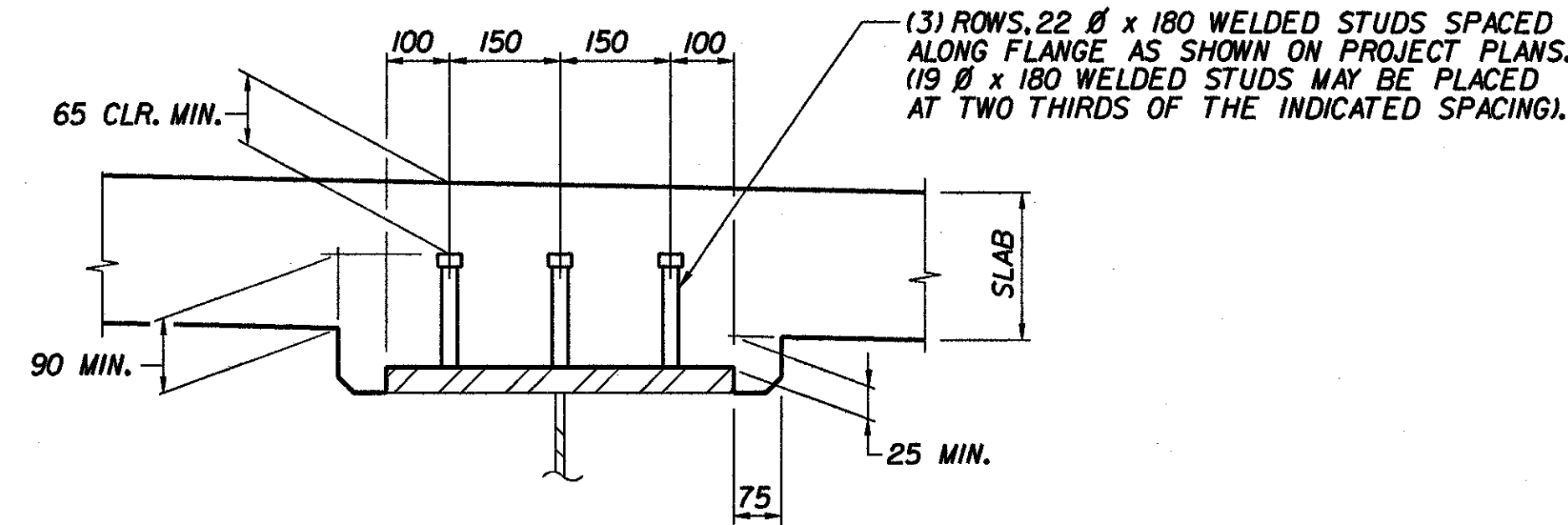


NOTE:
DEAD LOAD DEFLECTION AS SHOWN IN DIAGRAM INCLUDES STEEL, DECK CONCRETE, RAILING, CURB AND PAVEMENT

DEADLOAD DEFLECTION DIAGRAM



S FLANGE THICKNESS TAPER DETAIL
BR415 N.T.S.



T TYPICAL GIRDER HAUNCH & SHEAR CONNECTOR DETAIL
BR411 BR415 N.T.S.

**STATE OF VERMONT
AGENCY OF TRANSPORTATION**

| | | | |
|------------------------------------|--------------------|--------------------------|-------------------------|
| Town Of | BENNINGTON | Bridge No. | BR400 |
| Highway No. | VT. RTE. 9 | Log Sta. | |
| | | Surv. Sta. | 14+140 |
| VT. RTE. 9 OVER AIRPORT BROOK WEST | | | |
| GIRDER ELEVATION AND DETAILS | | | |
| Designed By | M. GOGUEN | Drawn by | B. WEATHERBY/K. DETRICK |
| Checked By | Date | Bridge Design Supervisor | |
| | P. PERKINS 11/01 | M. OLSTAD | Date 11/01 |
| PROJECT | BENNINGTON-HOOSICK | | PROJECT NO. |
| | | | D.P.J. 0146(1) |
| I.G.C. Info. | | | |
| Bridge Sheet No. BR415 | | Sheet 204 OF 473 | |