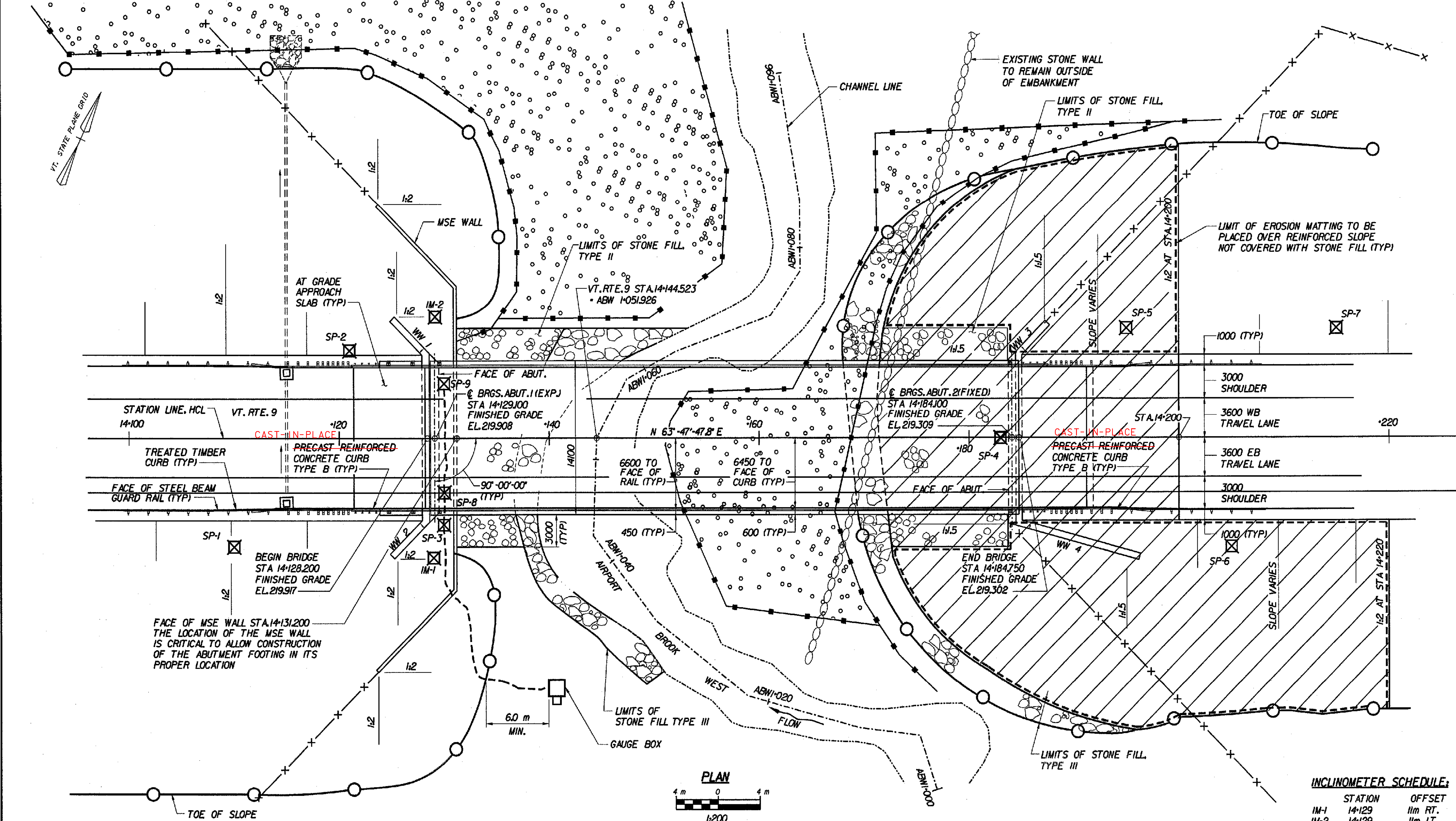


NOTE: UNLESS NOTED OTHERWISE, ALL STATIONS ARE IN KILOMETERS, ALL ELEVATIONS ARE IN METERS, AND ALL DIMENSIONS ARE IN MILLIMETERS.



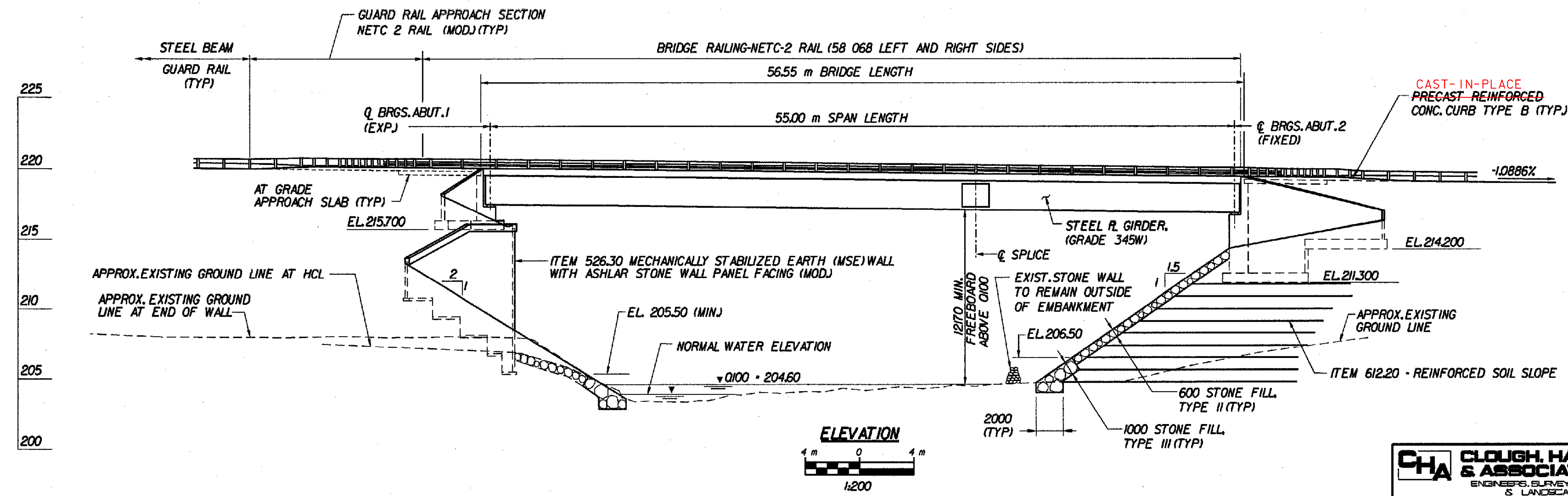
- LEGEND:**
- INDICATES TEMPORARY CONSTRUCTION ACCESS/WORK AREAS
 - INDICATES LIMITS OF SILT FENCE
 - INDICATES LIMITS OF GEOGRID REINFORCING
 - INDICATES LIMITS OF EROSION MATTING
 - SP-7 INDICATES LOCATION OF SETTLEMENT PLATFORM
 - IM-1 INDICATES LOCATION OF INCLINOMETER

INCLINOMETER SCHEDULE:

STATION	OFFSET
IM-1 14+129	11m RT.
IM-2 14+129	11m LT.

SETTLEMENT PLATFORM SCHEDULE:

STATION	OFFSET
SP-1 (TYPE I)	14+110 8m RT.
SP-2 (TYPE I)	14+122 8m LT.
SP-3 (TYPE I)	14+130 8m RT.
SP-4 (TYPE I)	14+183 CL
SP-5 (TYPE I)	14+195 10m LT.
SP-6 (TYPE I)	14+205 10m RT.
SP-7 (TYPE I)	14+215 10m LT.
SP-8 (TYPE II)	14+130 5m RT.
SP-9 (TYPE III)	14+130 5m LT.



FOR LIST OF BRIDGE SHEETS, SEE BRIDGE SHEET BR403.
 * PRE-CAST CONCRETE CURB WAS CHANGED TO CAST-IN-PLACE (SLIP FORMED) A.O.B.F. JFW 2/3/06

STATE OF VERMONT AGENCY OF TRANSPORTATION

Town of	BENNINGTON	Bridge No.	BR400
Highway No.	VT. RTE. 9	Log Sta.	
		Surv. Sta.	14+140
VT. RTE. 9 OVER AIRPORT BROOK WEST			
PLAN AND ELEVATION			
Designed By	M. GOGUEN	Drawn by	J. HOTALING/B. WEATHERBY
Checked By	P. PERKINS	Date	11/01
		Bridge Design Supervisor	M. OLSTAD
		Date	7/99
PROJECT	BENNINGTON-HOOSICK	PROJECT NO.	D.P.I. 0146(I)
I.G.C. Info.			
Bridge Sheet No.	BR400	Sheet	189 OF 473

FILE NAME = \\s373\15\15\480\480-pla.plt
 DATE/TIME = 10/11/2001
 USER = 664