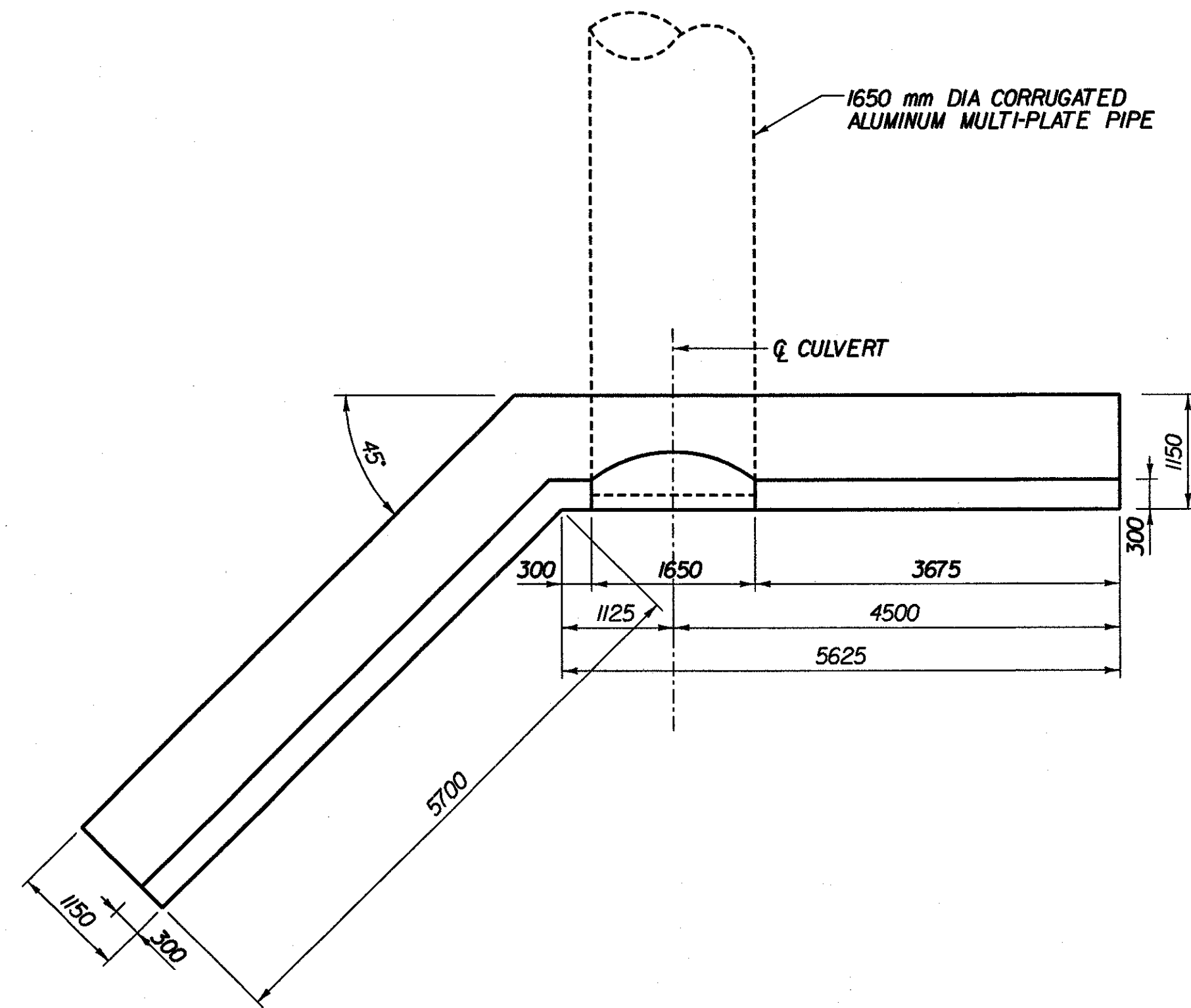
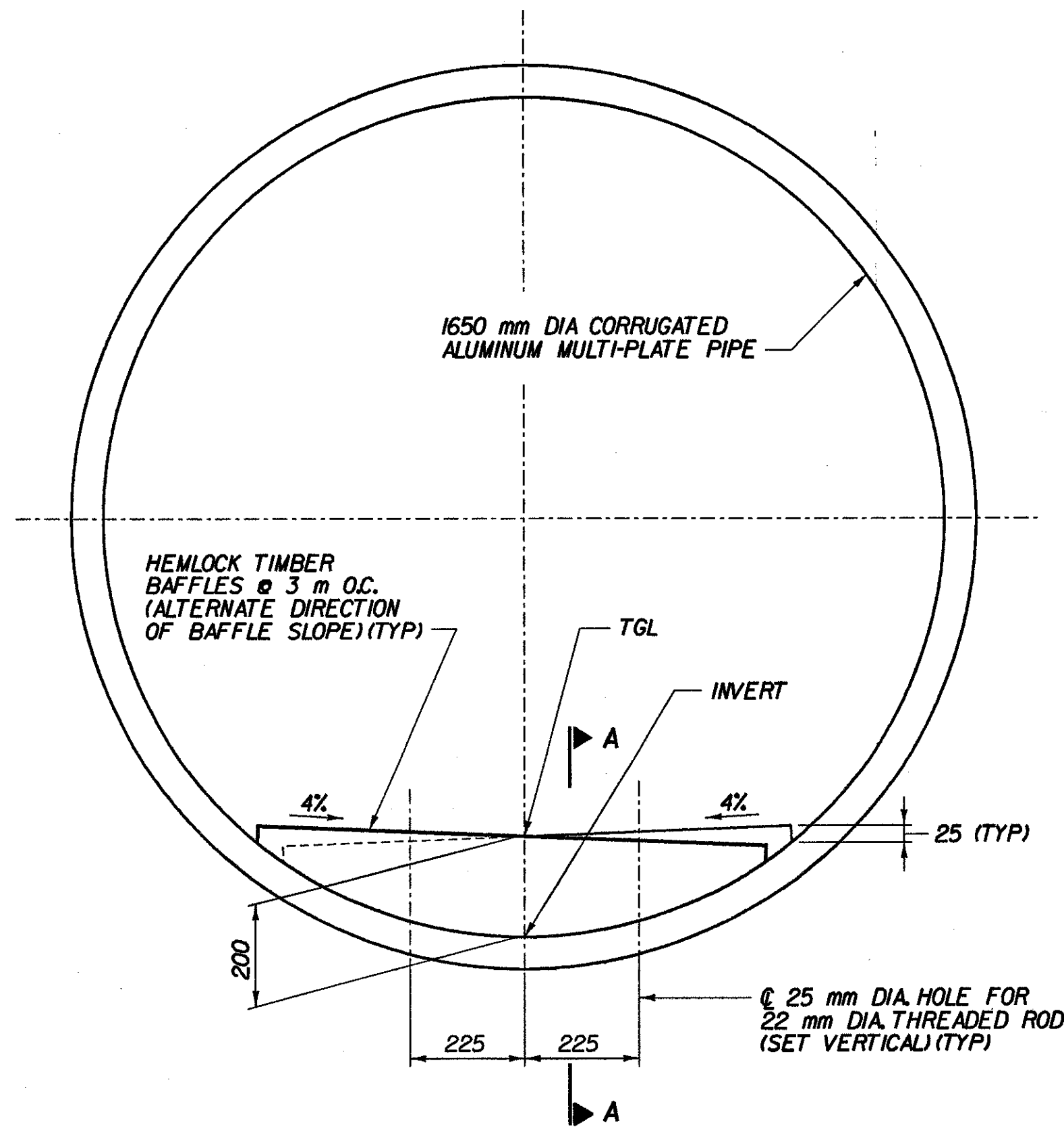
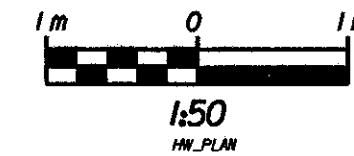


NOTE:
ALL DIMENSIONS ARE SHOWN IN MILLIMETERS UNLESS OTHERWISE NOTED.
ALL ELEVATIONS ARE IN METERS.



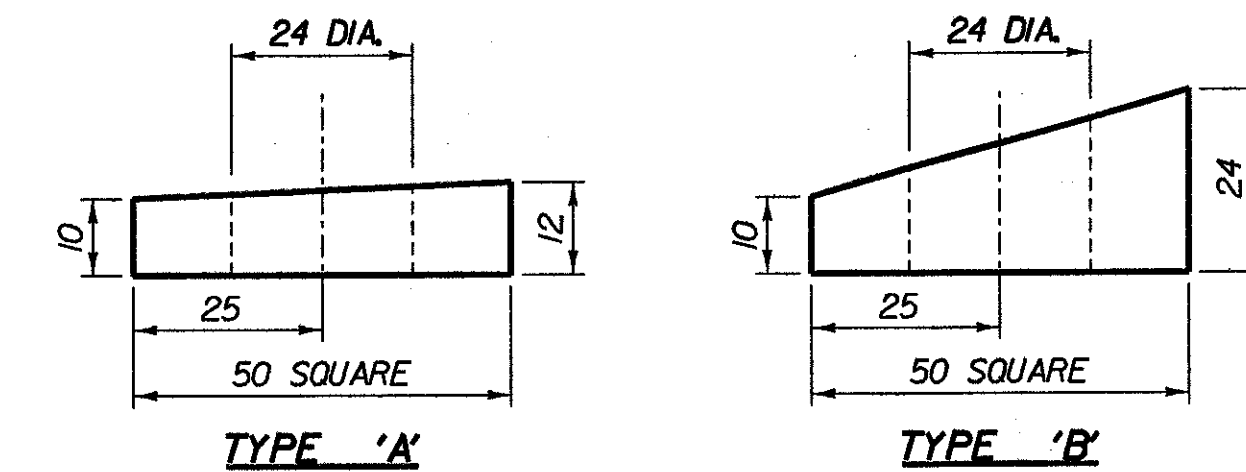
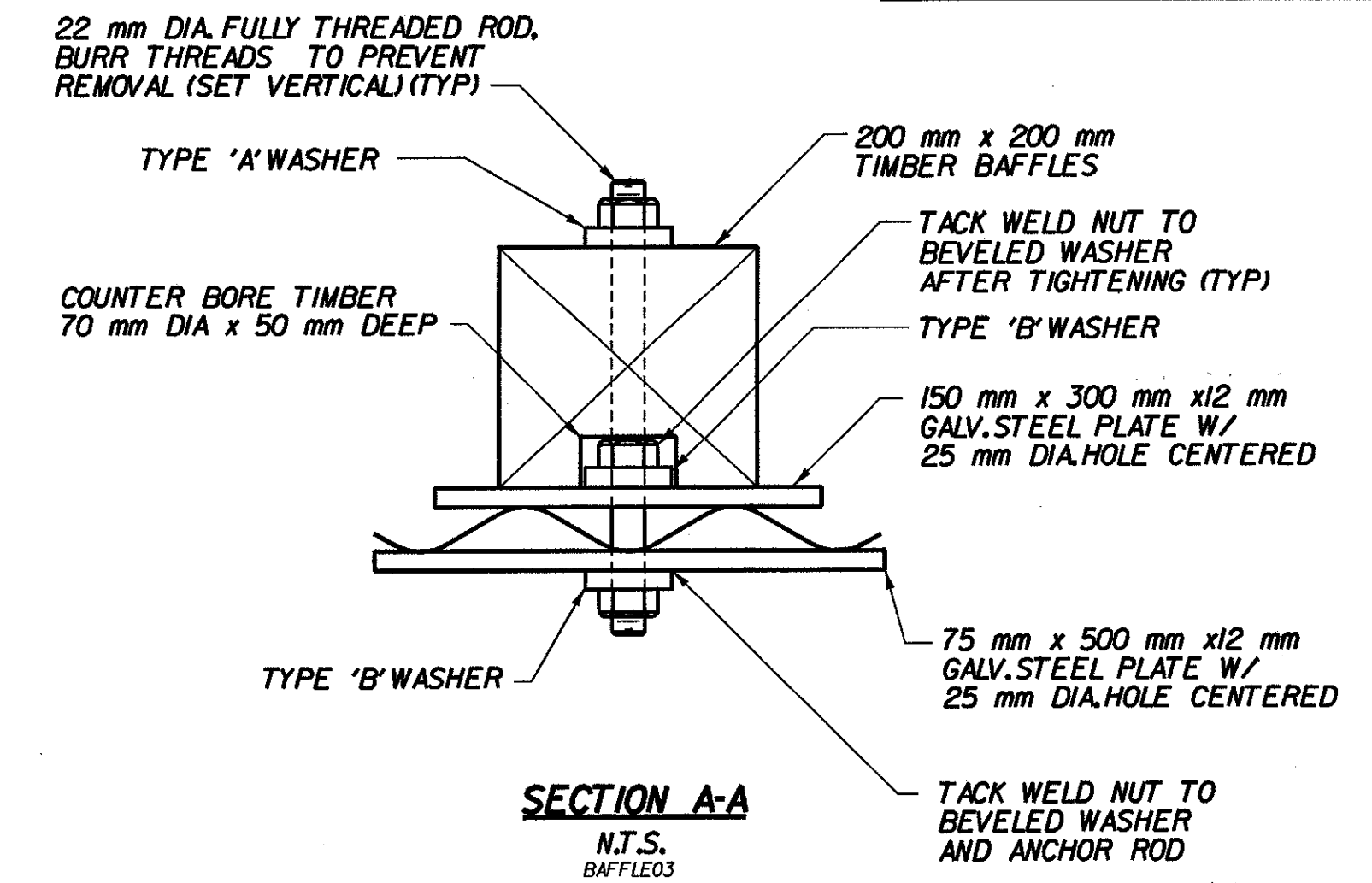
TYPICAL HEADWALL PLAN



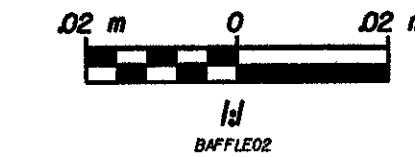
TYPICAL CULVERT SECTION



NOTE:
ALL ATTACHMENT HARDWARE TO BE GALVANIZED AS PER SECTION 506 OF STANDARD SPECIFICATIONS.



BEVELED PLATE WASHERS



NOTES:

1. THE COST OF ALL BAFFLES AND ATTACHMENT HARDWARE SHALL BE INCIDENTAL TO CORRUGATED ALUMINUM ALLOY PLATE PIPE.
2. TIMBER BAFFLES SHALL BE HEMLOCK, VISUALLY GRADED, DIMENSION LUMBER, UTILITY GRADE OR APPROVED EQUAL.
3. THREADED RODS AND NUTS SHALL CONFORM TO AASHTO M 219W.
4. PLATES AND PLATE WASHERS SHALL CONFORM TO AASHTO M 270M, GRADE 250.
5. ALL NUTS, BOLTS AND HARDWARE SHALL BE GALVANIZED AFTER FABRICATION.

STATE OF VERMONT
AGENCY OF TRANSPORTATION

Town Of	BENNINGTON	Bridge No.	BR300
Highway No.	VT. RTE. 9	Log Sta.	
		Surv. Sta.	13+982
PROPOSED VT. RTE. 9 OVER AIRPORT BROOK WEST TRIBUTARY			
SECTIONS AND DETAILS			
Designed By	M. GOGUEN	Drawn by	B. WEATHERBY
Checked By	P. PERKINS	Date	11/01
		Bridge Design Supervisor	M.W. OLSTAD
		Date	11/01
PROJECT	BENNINGTON-HOOSICK		PROJECT NO. D.P.L. 0146 (1)
I.G.C. Info.			
Bridge Sheet No.	BR302	Sheet	188 OF 473