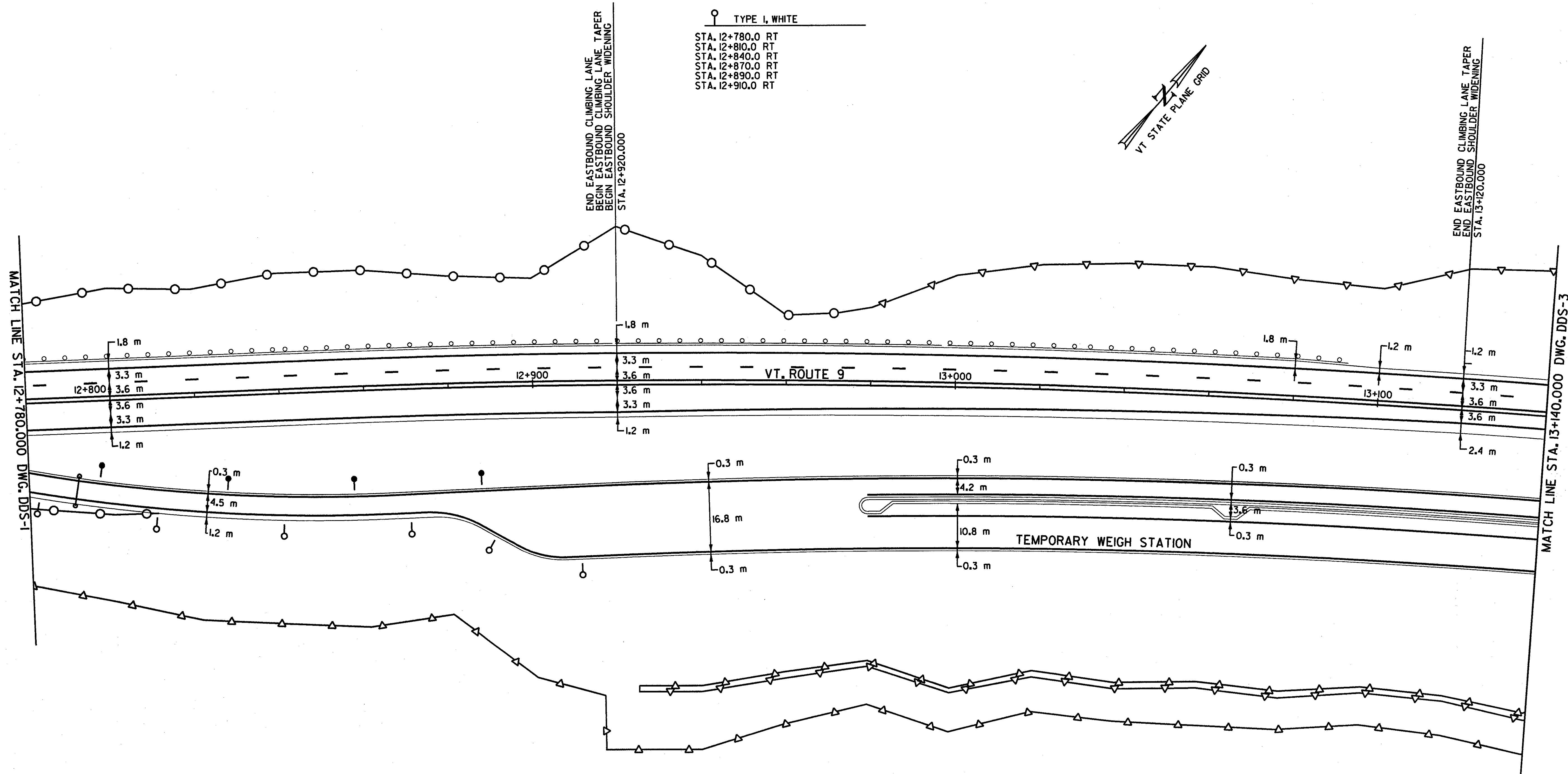
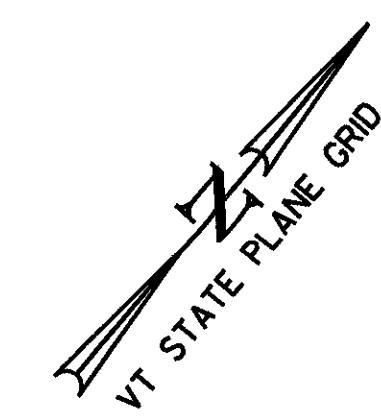


676.10 DELINEATORS W/ STEEL POSTS

- TYPE I, AMBER
- TYPE I, WHITE
- TYPE II, DOUBLE WHITE
- TYPE III, WHITE W/ RED ON BACK
- TYPE III, AMBER W/ RED ON BACK



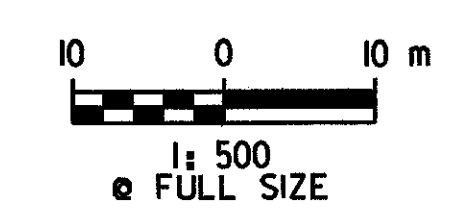
MATCH LINE STA. 12+780.000 DWG. DDS-1

MATCH LINE STA. 13+140.000 DWG. DDS-3

END EASTBOUND CLIMBING LANE TAPER
BEGIN EASTBOUND SHOULDER WIDENING
STA. 12+920.000

END EASTBOUND CLIMBING LANE TAPER
END EASTBOUND SHOULDER WIDENING
STA. 13+120.000

- DELINEATOR LEGEND**
- TYPE I, WHITE
 - TYPE I, AMBER
 - TYPE II, DOUBLE WHITE
 - TYPE III, WHITE W/ RED ON BACK
 - TYPE III, AMBER W/ RED ON BACK



FILE NAME = \\S116\VA001\CONTRACT3\VTDDSS2.dgn
DATE/TIME = 10/11/2001
USER = 664

DATUM	
VERTICAL	NAVD 88
HORIZONTAL	NAD 83 (1992)

DELINEATOR DETAIL SHEET 2	SURVEYED BY C.H.A. & V.S.E. DATE 12/93
	DESIGNED BY D.E.G. DATE 11/01
	DRAWN BY J.S.L. DATE 11/01
	CHECKED BY T.P.K. DATE 11/01
DESIGN FILE NO. /5116/VA01/C3/VTDSS2	PROJ. NAME BENNINGTON - HOOSICK D.P.I. 0146(I) C/3
	PROJ. NO. P.I.N. 1306.60
	DWG NO. DDS-2 SHEET 170 OF 473