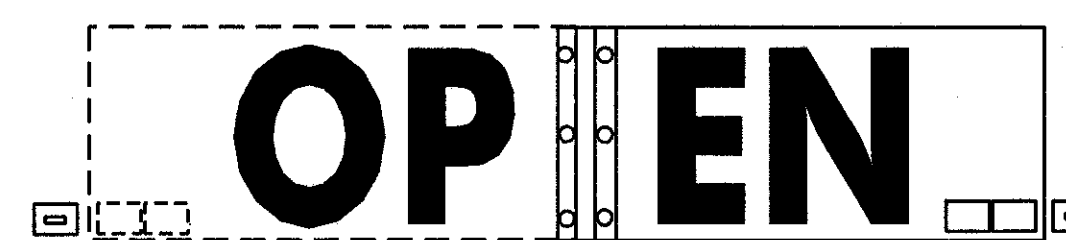


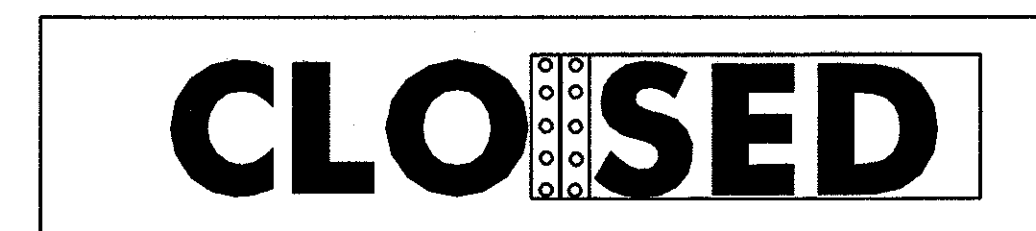
COLOR: WHITE BORDER & TEXT (ENCAPSULATED LENS SHEETING)
GREEN BACKGROUND (ENCAPSULATED LENS SHEETING)

MATERIAL: PER VAOT STANDARD E-131M
SIGN - VT, ROUTE 9
STA. I2+295.0, RT

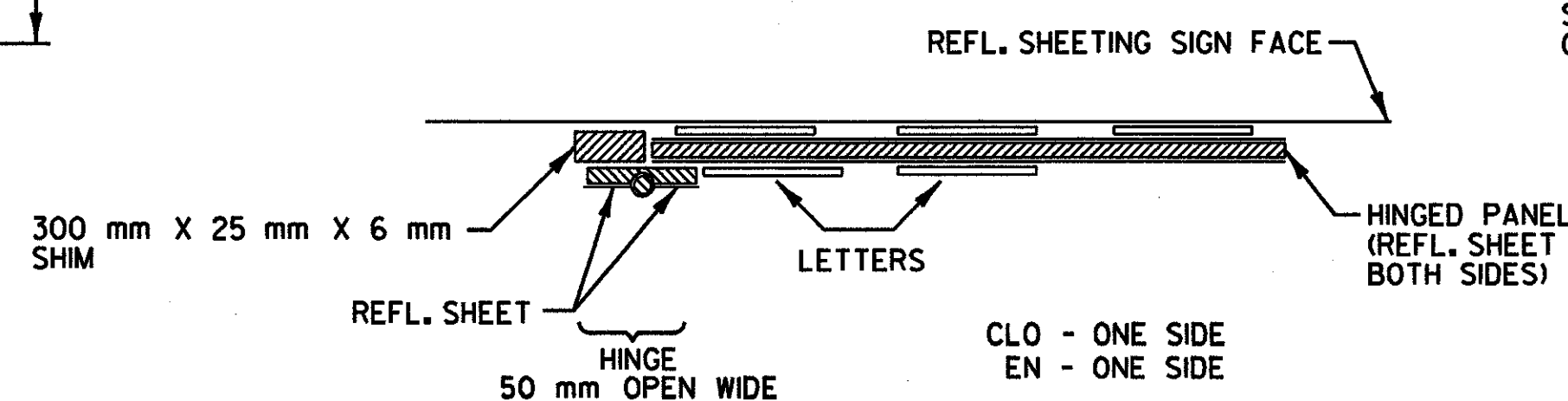


2 EACH 88 mm X 38 mm STEEL
HASP W/PADLOCK (SEE DETAIL)

COLORS: TEXT - BLACK (REFLECTORIZED)
BACKGROUND - YELLOW (REFLECTORIZED)
SEE STD. E-150M FOR MATERIALS

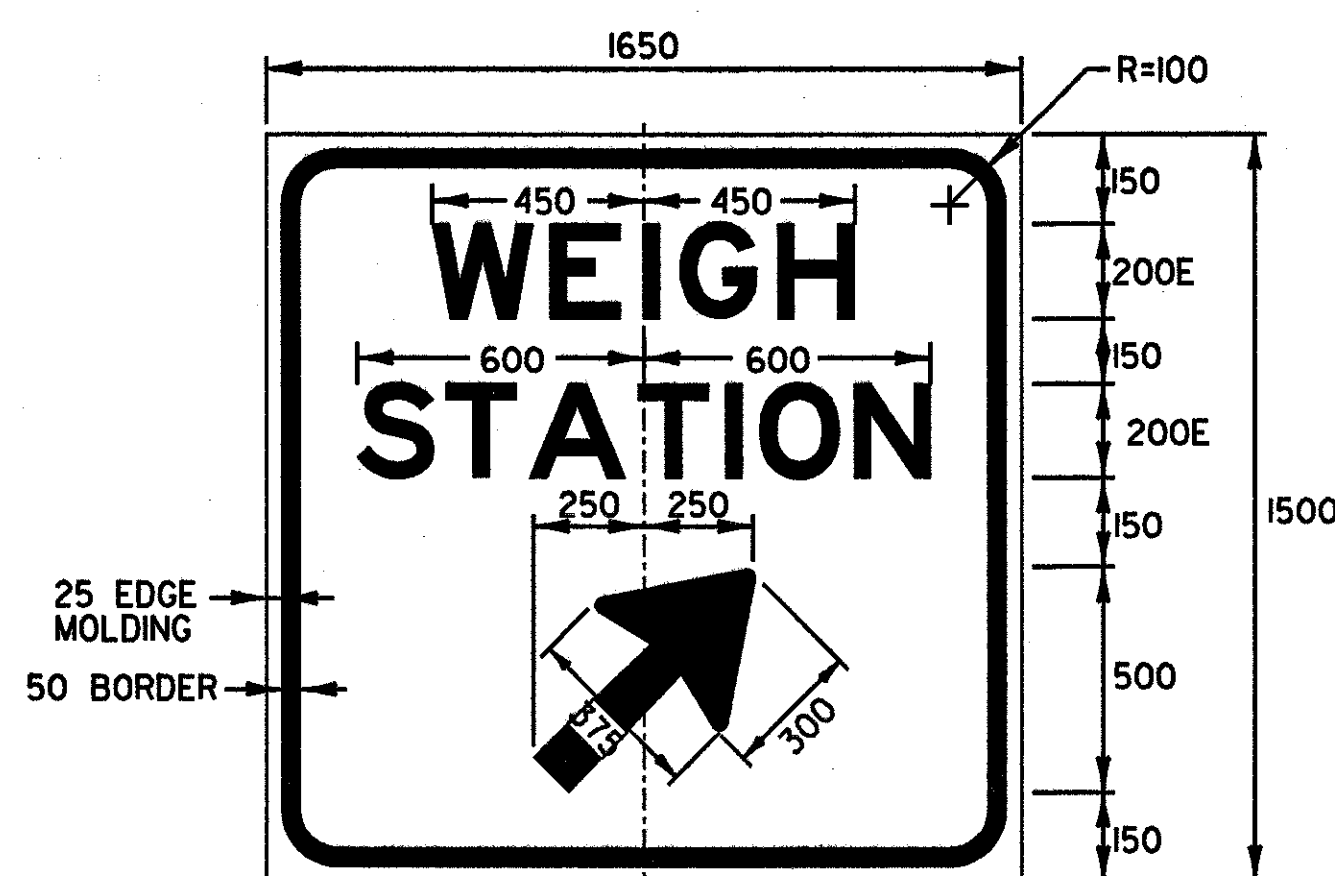


THE CENTRALLY HINGED PANEL TO HAVE THE LETTERS 'OP' DISPLAYED WHEN SWUNG TO THE LEFT AND 'SED' DISPLAYED WHEN SWUNG TO THE RIGHT AND THE PARENT SIGN TO HAVE 'EN' RIGHT OF THE HINGE AND 'CLO' TO THE LEFT, SO THAT SWINGING THE PANEL LEFT OR RIGHT FORMS THE WORDS 'OPEN' OR 'CLOSED'. FURNISH AND MOUNT STAINLESS STEEL RETAINERS TO SECURE THE PANEL IN EITHER POSITION. PANEL POSITION WILL BE CHANGED FROM THE GROUND WITH A POLE. HINGE TO BE COVERED WITH SAME REFLECTORIZED MATERIAL AS SIGN. ADJUST LETTER TO LETTER SPACING TO CLEAR HINGE IF NECESSARY AND OTHER LETTERS ACCORDINGLY.



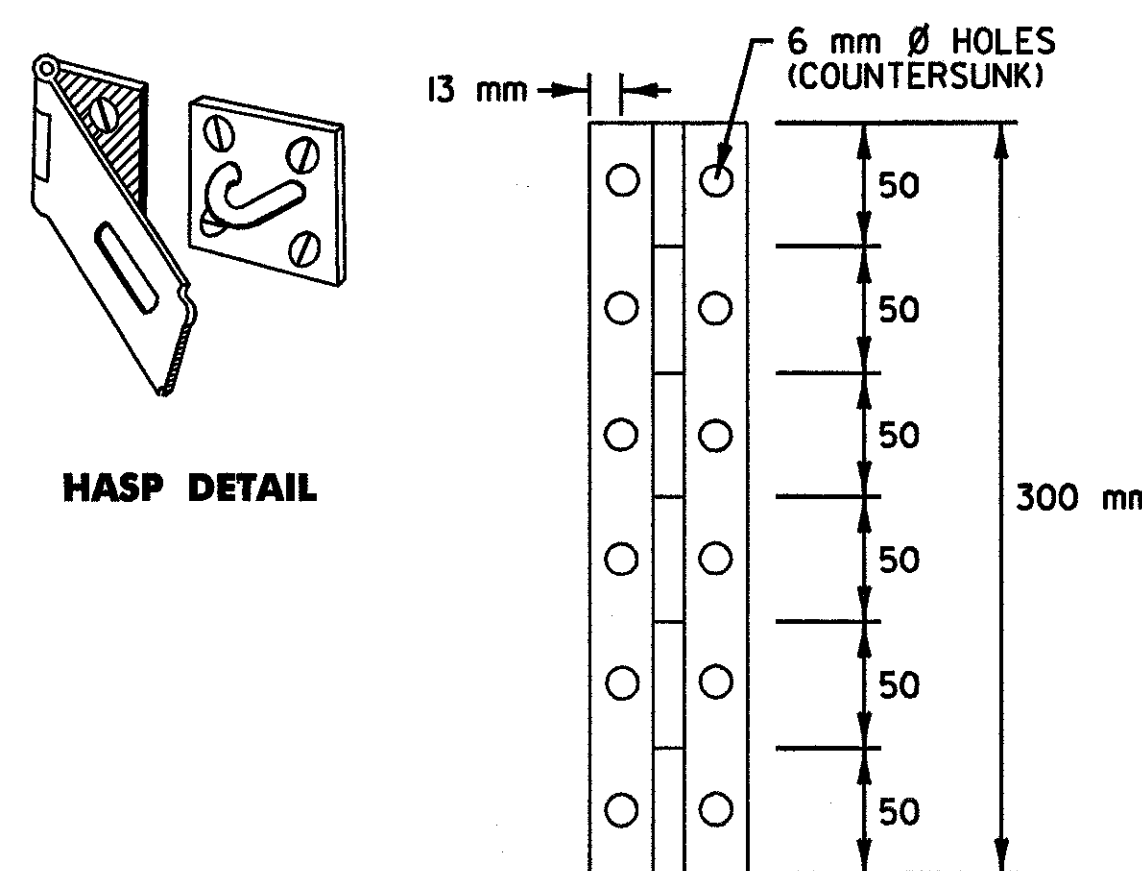
IF MORE THAN NORMAL LETTER IS REQUIRED TO CLEAR HINGE, ADJUST SPACING OF OTHER LETTERS ACCORDINGLY.

SIGN SHALL BE FABRICATED SO AS WHEN THE 'OPEN' SHOWS, IT SHALL BE BLACK TEXT ON A YELLOW BACKGROUND.



COLOR: WHITE BORDER & TEXT (ENCAPSULATED LENS SHEETING)
GREEN BACKGROUND (ENCAPSULATED LENS SHEETING)

MATERIAL: PER VAOT STANDARD E-131M
SIGN - VT, ROUTE 9
STA. I2+745.0, RT



HINGE DETAIL

ALL DIMENSIONS IN MILLIMETERS UNLESS OTHERWISE NOTED.

**TRAFFIC
SIGN
DETAIL
SHEET 4**

SURVEYED BY C.H.A. & V.S.E. DATE 12/93
DESIGNED BY D.E.G. DATE 11/01
DRAWN BY K.H.D. DATE 11/01
CHECKED BY T.P.K. DATE 11/01

DESIGN FILE NO. /5116/5116SIGN.DGN

PROJ. NAME BENNINGTON - HOOSICK
D.P.L. 0146(1) C/3

PROJ. NO. P.I.N. 1306.60

DWG NO. TSD-4 SHEET 168 OF 473

TEXT LAYOUT DIMENSIONS ARE BASED ON THE 'LETTER & NUMERAL WIDTHS AND SPACE' TABLES FOUND IN THE 'STANDARD HIGHWAY SIGNS' BOOKLET. MINOR VARIATIONS IN TEXT DIMENSIONS ARE ACCEPTABLE BASED ON INDIVIDUAL MANUFACTURER'S LETTER FABRICATION. SIGNIFICANT CHANGES WHICH AFFECT SIGN APPEARANCE SHALL BE BROUGHT TO THE ATTENTION OF THE VAOT'S TRAFFIC & SAFETY DIVISION BEFORE FABRICATION.