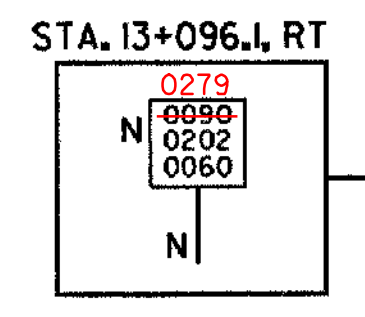
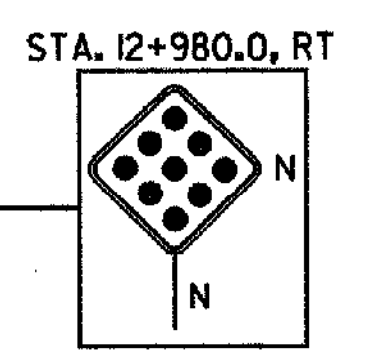
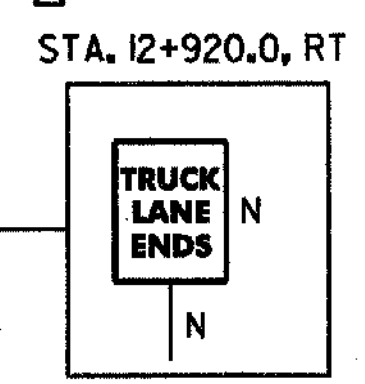
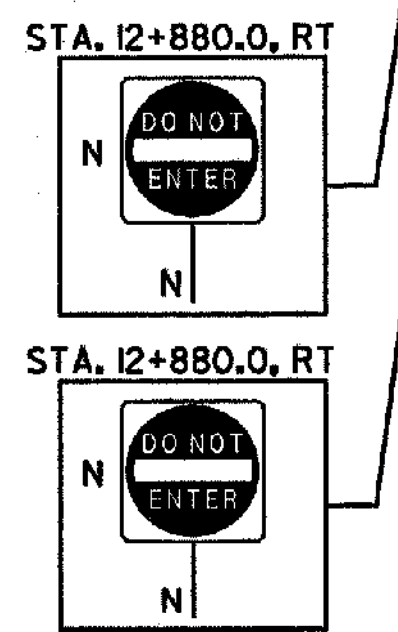
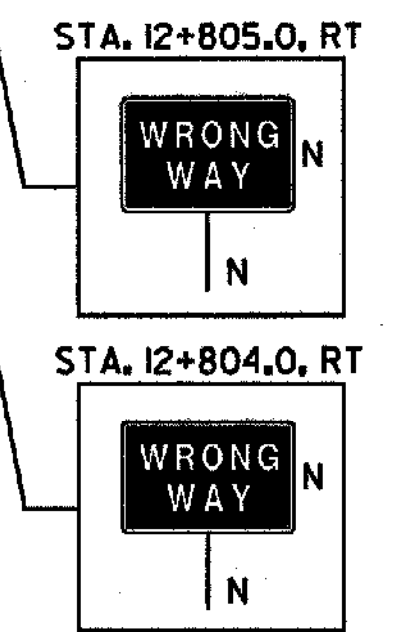
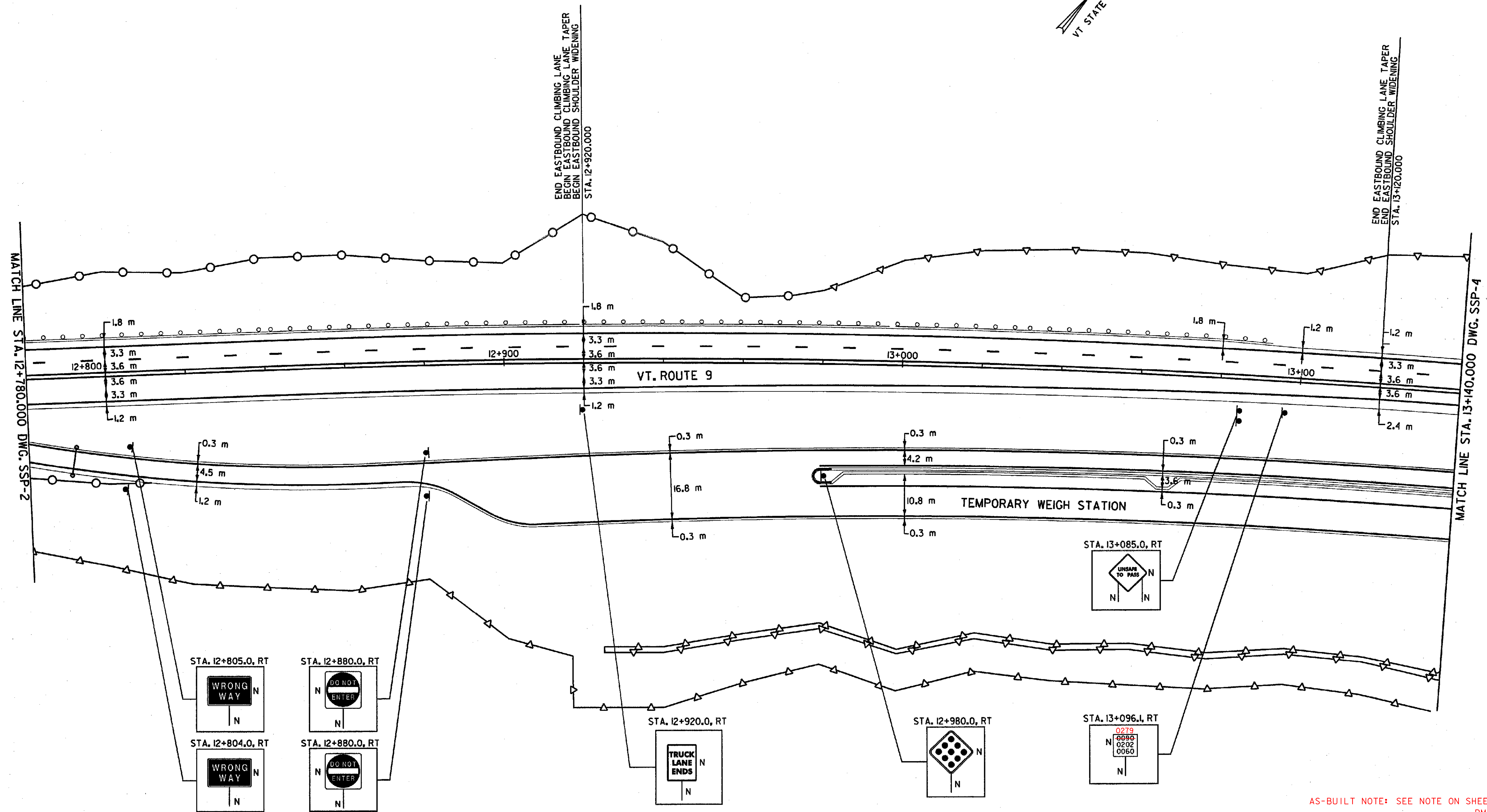
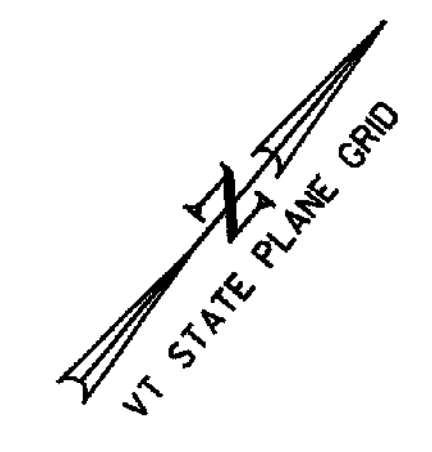


150
 646.40 DURABLE 100 mm WHITE LINE
 STA. 12+780.000 - STA. 13+140.000 SOLID LT & RT (EDGE LINE)
 STA. 12+780.000 - STA. 13+140.000 DASHED 3.6 m LT (LANE LINE)
 STA. 12+780.000 - STA. 13+140.000 SOLID RT (EDGE LINE)
 STA. 12+979.400 - STA. 13+140.000 SOLID RT (RAISED ISLAND EDGE LINES)

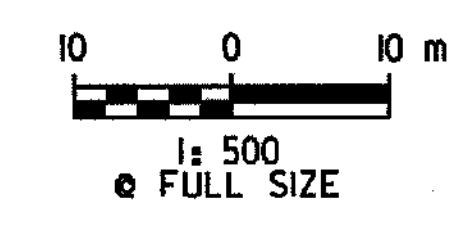
150
 646.41 DURABLE 100 mm YELLOW LINE
 STA. 12+780.000 - STA. 13+140.000 DOUBLE SOLID (CENTER LINE)
 STA. 12+780.000 - STA. 13+140.000 SOLID RT (EDGE LINE)

646.81 PAINTED CURB (YELLOW)
 STA. 12+977.8 - STA. 12+982.8 RT (RAISED ISLAND NOSE)



SIGN LEGEND
 R = REMOVE
 S = SALVAGE
 N = NEW
 RET = RETAIN
 B-B = BACK TO BACK
 EXISTING = - - - - -
 NEW = _____

DATUM	
VERTICAL	NAVD 88
HORIZONTAL	NAD 83 (1992)



SIGNING AND STRIPING PLAN

AS-BUILT NOTE: SEE NOTE ON SHEET 144.
 RMT 2/3/06

SURVEYED BY	C.H.A. & V.S.E.	DATE	12/93
DESIGNED BY	D.E.G.	DATE	11/01
DRAWN BY	J.S.L.	DATE	11/01
CHECKED BY	T.P.K.	DATE	11/01
DESIGN FILE NO.	/5116/VAOT/VTSSP9		
PROJ. NAME	BENNINGTON - HOOSICK D.P.J. 0146(1) C/3		
PROJ. NO.	P.I.N. 1306.60		
DWG NO. SSP-3	SHEET 146 OF 473		

FILE NAME = J:\5116\VAOT\CONTRACT3\VTSSP9.DGN
 DATE/TIME = 10/11/2001
 USER = 664