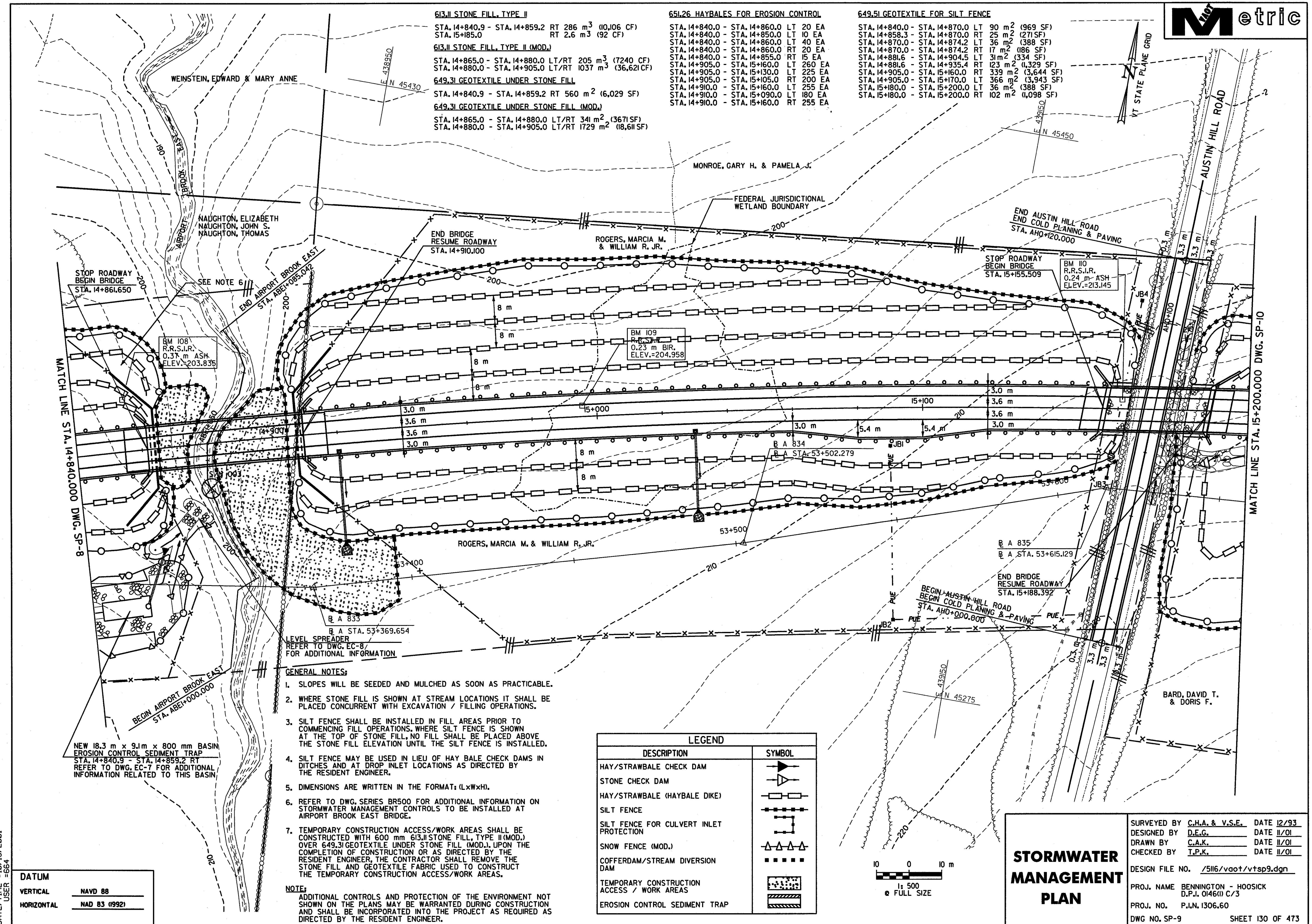


613,II STONE FILL, TYPE II STA. 14+840.9 - STA. 14+859.2 RT 286 m ³ (10,106 CF) STA. 15+185.0 RT 2.6 m ³ (92 CF)	651.26 HAYBALES FOR EROSION CONTROL STA. 14+840.0 - STA. 14+860.0 LT 20 EA STA. 14+840.0 - STA. 14+850.0 LT 10 EA STA. 14+840.0 - STA. 14+860.0 LT 40 EA STA. 14+840.0 - STA. 14+860.0 RT 20 EA STA. 14+840.0 - STA. 14+855.0 RT 15 EA STA. 14+905.0 - STA. 15+160.0 LT 250 EA STA. 14+905.0 - STA. 15+130.0 LT 225 EA STA. 14+905.0 - STA. 15+105.0 RT 200 EA STA. 14+910.0 - STA. 15+160.0 LT 255 EA STA. 14+910.0 - STA. 15+090.0 LT 180 EA STA. 14+910.0 - STA. 15+160.0 RT 255 EA	649.51 GEOTEXTILE FOR SILT FENCE STA. 14+840.0 - STA. 14+870.0 LT 90 m ² (969 SF) STA. 14+858.3 - STA. 14+870.0 RT 25 m ² (271 SF) STA. 14+870.0 - STA. 14+874.2 LT 36 m ² (388 SF) STA. 14+870.0 - STA. 14+874.2 RT 17 m ² (186 SF) STA. 14+881.6 - STA. 14+904.5 LT 31 m ² (334 SF) STA. 14+881.6 - STA. 14+904.5 RT 123 m ² (1,329 SF) STA. 14+905.0 - STA. 15+160.0 RT 339 m ² (3,644 SF) STA. 14+905.0 - STA. 15+170.0 LT 366 m ² (3,943 SF) STA. 15+180.0 - STA. 15+200.0 LT 36 m ² (388 SF) STA. 15+180.0 - STA. 15+200.0 RT 102 m ² (1,098 SF)
---	--	---

613,II STONE FILL, TYPE II (MOD.)
 STA. 14+865.0 - STA. 14+880.0 LT/RT 205 m³ (7240 CF)
 STA. 14+880.0 - STA. 14+905.0 LT/RT 1037 m³ (36,621 CF)

649.31 GEOTEXTILE UNDER STONE FILL
 STA. 14+840.9 - STA. 14+859.2 RT 560 m² (6,029 SF)

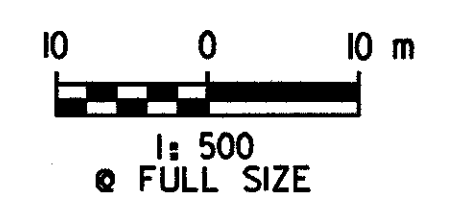
649.31 GEOTEXTILE UNDER STONE FILL (MOD.)
 STA. 14+865.0 - STA. 14+880.0 LT/RT 341 m² (3671 SF)
 STA. 14+880.0 - STA. 14+905.0 LT/RT 1729 m² (18,611 SF)



- GENERAL NOTES:**
- SLOPES WILL BE SEEDED AND MULCHED AS SOON AS PRACTICABLE.
 - WHERE STONE FILL IS SHOWN AT STREAM LOCATIONS IT SHALL BE PLACED CONCURRENT WITH EXCAVATION / FILLING OPERATIONS.
 - SILT FENCE SHALL BE INSTALLED IN FILL AREAS PRIOR TO COMMENCING FILL OPERATIONS. WHERE SILT FENCE IS SHOWN AT THE TOP OF STONE FILL, NO FILL SHALL BE PLACED ABOVE THE STONE FILL ELEVATION UNTIL THE SILT FENCE IS INSTALLED.
 - SILT FENCE MAY BE USED IN LIEU OF HAY BALE CHECK DAMS IN DITCHES AND AT DROP INLET LOCATIONS AS DIRECTED BY THE RESIDENT ENGINEER.
 - DIMENSIONS ARE WRITTEN IN THE FORMAT: (LxWxH).
 - REFER TO DWG. SERIES BR500 FOR ADDITIONAL INFORMATION ON STORMWATER MANAGEMENT CONTROLS TO BE INSTALLED AT AIRPORT BROOK EAST BRIDGE.
 - TEMPORARY CONSTRUCTION ACCESS/WORK AREAS SHALL BE CONSTRUCTED WITH 600 mm 613,II STONE FILL, TYPE II (MOD.) OVER 649.31 GEOTEXTILE UNDER STONE FILL (MOD.). UPON THE COMPLETION OF CONSTRUCTION OR AS DIRECTED BY THE RESIDENT ENGINEER, THE CONTRACTOR SHALL REMOVE THE STONE FILL AND GEOTEXTILE FABRIC USED TO CONSTRUCT THE TEMPORARY CONSTRUCTION ACCESS/WORK AREAS.

NOTE:
 ADDITIONAL CONTROLS AND PROTECTION OF THE ENVIRONMENT NOT SHOWN ON THE PLANS MAY BE WARRANTED DURING CONSTRUCTION AND SHALL BE INCORPORATED INTO THE PROJECT AS REQUIRED AS DIRECTED BY THE RESIDENT ENGINEER.

LEGEND	
DESCRIPTION	SYMBOL
HAY/STRAWBALE CHECK DAM	
STONE CHECK DAM	
HAY/STRAWBALE (HAYBALE DIKE)	
SILT FENCE	
SILT FENCE FOR CULVERT INLET PROTECTION	
SNOW FENCE (MOD.)	
COFFERDAM/STREAM DIVERSION DAM	
TEMPORARY CONSTRUCTION ACCESS / WORK AREAS	
EROSION CONTROL SEDIMENT TRAP	



STORMWATER MANAGEMENT PLAN

SURVEYED BY C.H.A. & V.S.E. DATE 12/93
 DESIGNED BY D.E.G. DATE 11/01
 DRAWN BY C.A.K. DATE 11/01
 CHECKED BY T.P.K. DATE 11/01

DESIGN FILE NO. /5116/vaot/vtsp9.dgn
 PROJ. NAME BENNINGTON - HOOSICK D.P.I. 0146(1) C/3
 PROJ. NO. P.I.N. 1306.60
 DWG NO. SP-9 SHEET 130 OF 473

FILE NAME = u:\5116\VAOT\CONTRACT3\vtsp9.dgn
 DATE/TIME = 10/15/2001
 USER = 664

DATUM

VERTICAL	NAVD 88
HORIZONTAL	NAD 83 (992)