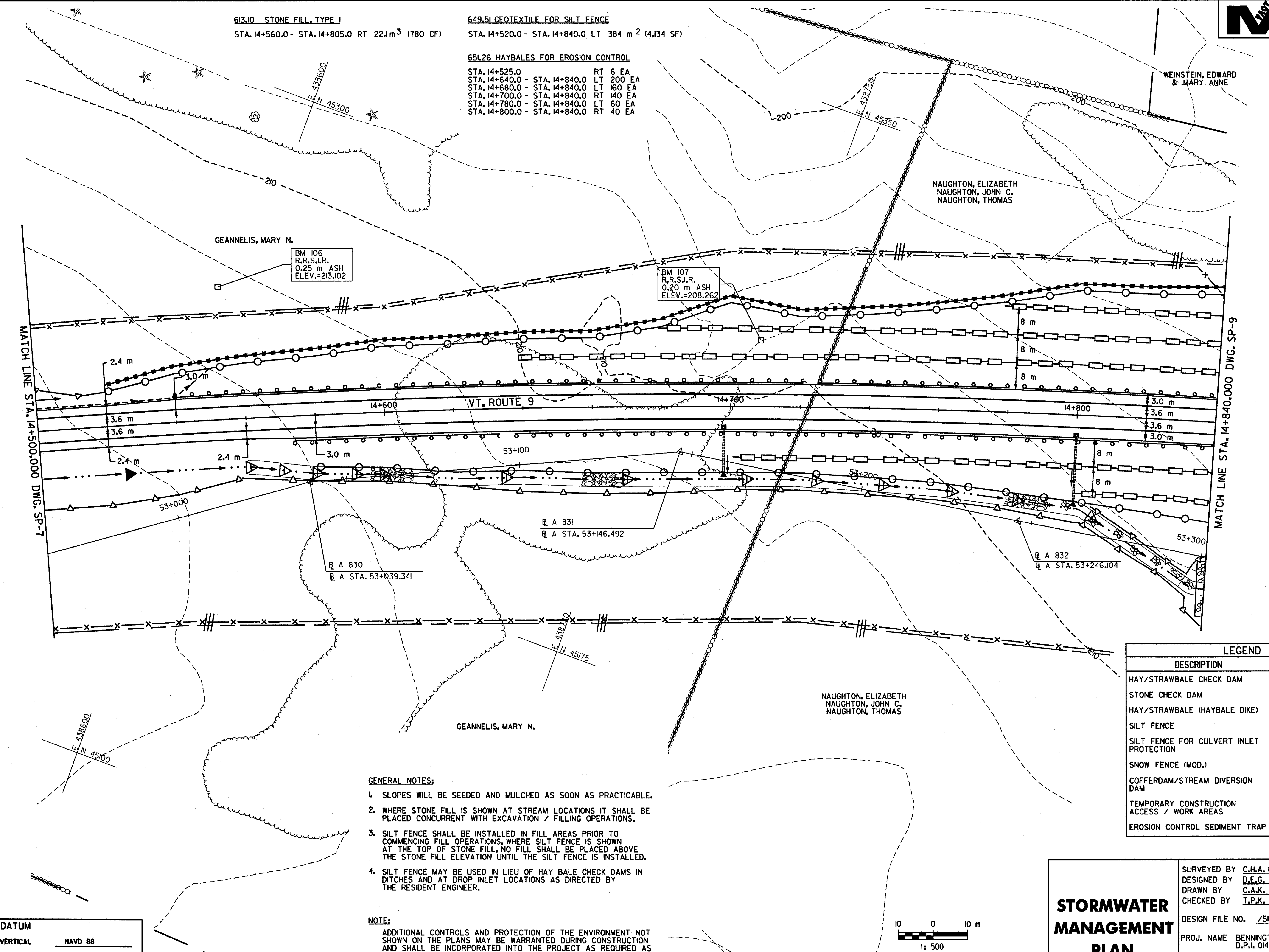


613.10 STONE FILL, TYPE I
STA. 14+560.0 - STA. 14+805.0 RT 22.1m³ (780 CF)

649.51 GEOTEXTILE FOR SILT FENCE
STA. 14+520.0 - STA. 14+840.0 LT 384 m² (4,134 SF)

651.26 HAYBALES FOR EROSION CONTROL

STA. 14+525.0 RT 6 EA
STA. 14+640.0 - STA. 14+840.0 LT 200 EA
STA. 14+680.0 - STA. 14+840.0 LT 160 EA
STA. 14+700.0 - STA. 14+840.0 RT 140 EA
STA. 14+780.0 - STA. 14+840.0 LT 60 EA
STA. 14+800.0 - STA. 14+840.0 RT 40 EA



MATCH LINE STA. 14+500.000 DWG. SP-7

MATCH LINE STA. 14+840.000 DWG. SP-9

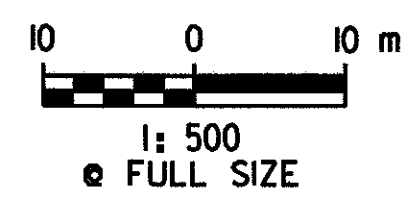
LEGEND	
DESCRIPTION	SYMBOL
HAY/STRAWBALE CHECK DAM	
STONE CHECK DAM	
HAY/STRAWBALE (HAYBALE DIKE)	
SILT FENCE	
SILT FENCE FOR CULVERT INLET PROTECTION	
SNOW FENCE (MOD.)	
COFFERDAM/STREAM DIVERSION DAM	
TEMPORARY CONSTRUCTION ACCESS / WORK AREAS	
EROSION CONTROL SEDIMENT TRAP	

- GENERAL NOTES:**
- SLOPES WILL BE SEEDED AND MULCHED AS SOON AS PRACTICABLE.
 - WHERE STONE FILL IS SHOWN AT STREAM LOCATIONS IT SHALL BE PLACED CONCURRENT WITH EXCAVATION / FILLING OPERATIONS.
 - SILT FENCE SHALL BE INSTALLED IN FILL AREAS PRIOR TO COMMENCING FILL OPERATIONS. WHERE SILT FENCE IS SHOWN AT THE TOP OF STONE FILL, NO FILL SHALL BE PLACED ABOVE THE STONE FILL ELEVATION UNTIL THE SILT FENCE IS INSTALLED.
 - SILT FENCE MAY BE USED IN LIEU OF HAY BALE CHECK DAMS IN DITCHES AND AT DROP INLET LOCATIONS AS DIRECTED BY THE RESIDENT ENGINEER.

NOTE:
ADDITIONAL CONTROLS AND PROTECTION OF THE ENVIRONMENT NOT SHOWN ON THE PLANS MAY BE WARRANTED DURING CONSTRUCTION AND SHALL BE INCORPORATED INTO THE PROJECT AS REQUIRED AS DIRECTED BY THE RESIDENT ENGINEER.

DATUM

VERTICAL	NAVD 88
HORIZONTAL	NAD 83 (1992)



STORMWATER MANAGEMENT PLAN

SURVEYED BY	C.H.A. & V.S.E.	DATE	12/93
DESIGNED BY	D.E.G.	DATE	11/01
DRAWN BY	C.A.K.	DATE	11/01
CHECKED BY	T.P.K.	DATE	11/01
DESIGN FILE NO.	/5116/vaot/vtsp8.dgn		
PROJ. NAME	BENNINGTON - HOOSICK D.P.L. 0146(1) C/3		
PROJ. NO.	P.I.N. 1306.60		
DWG NO. SP-8	SHEET 129 OF 473		

FILE NAME = s:\5116\VAOT\CONTRACT3\vtsp8.dgn
DATE/TIME = 10/11/2001
USER = 664