

NEW 150 mm X 40 m UNDERDRAIN PIPE  
W/150 mm X 13 m CARRIER PIPE  
STA. 14+500.0 - STA. 14+550.0 LT  
14+558.0

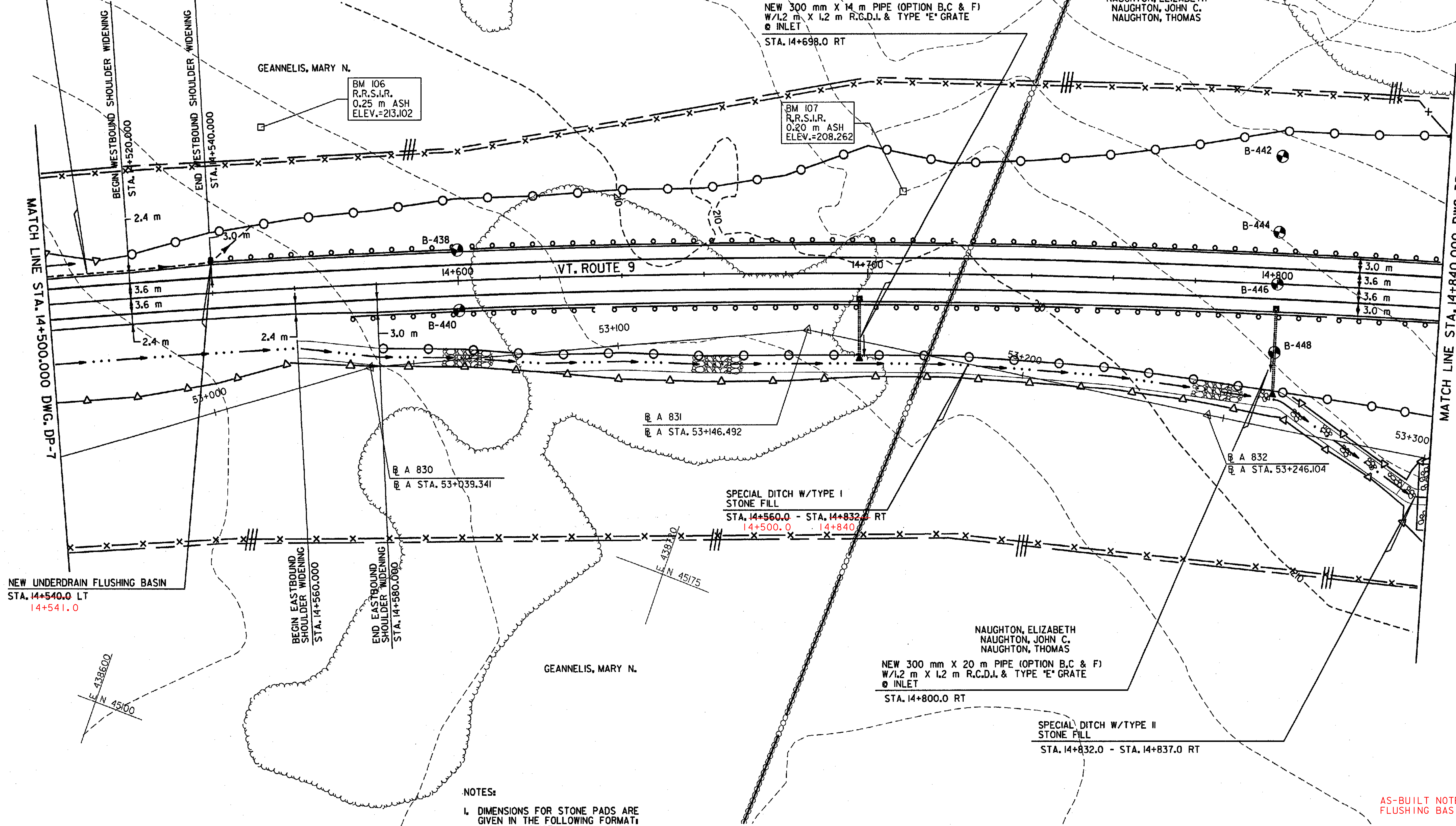
NEW 300 mm X 14 m PIPE (OPTION B,C & F)  
W/1.2 m X 1.2 m R.C.D.I. & TYPE 'E' GRATE  
INLET  
STA. 14+698.0 RT

NAUGHTON, ELIZABETH  
NAUGHTON, JOHN C.  
NAUGHTON, THOMAS

GEANNELIS, MARY N.

BM 106  
R.R.S.I.R.  
0.25 m ASH  
ELEV.=213.102

BM 107  
R.R.S.I.R.  
0.20 m ASH  
ELEV.=208.262



NEW UNDERDRAIN FLUSHING BASIN  
STA. 14+540.0 LT  
14+541.0

SPECIAL DITCH W/TYPE I  
STONE FILL  
STA. 14+560.0 - STA. 14+832.0 RT  
14+500.0 - 14+840.0

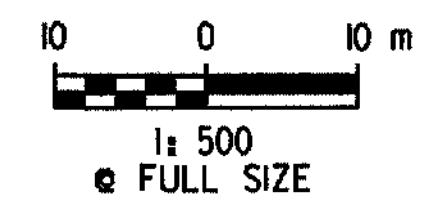
SPECIAL DITCH W/TYPE II  
STONE FILL  
STA. 14+832.0 - STA. 14+837.0 RT

NEW 300 mm X 20 m PIPE (OPTION B,C & F)  
W/1.2 m X 1.2 m R.C.D.I. & TYPE 'E' GRATE  
INLET  
STA. 14+800.0 RT

**NOTES:**

1. DIMENSIONS FOR STONE PADS ARE GIVEN IN THE FOLLOWING FORMAT: (WIDTH X LENGTH).
2. DRAINAGE PIPE OPTIONS ARE AS FOLLOWS:  
OPTION A - RCP  
OPTION B - PCCSP  
OPTION C - CAAP  
OPTION D - CPEP(SL)  
OPTION E - PCCSP(W/PI)  
OPTION F - CPEP
3. THE ACTUAL LOCATION OF UNDERDRAIN CROSS CARRIER PIPE WILL BE AT THE END OF FULL-DEPTH SHATTERED ROCK SECTION OR AS DIRECTED BY RESIDENT ENGINEER.

<b>DATUM</b>	
VERTICAL	NAVD 88
HORIZONTAL	NAD 83 (1992)



**DRAINAGE PLAN**

AS-BUILT NOTES: SEE UNDERDRAIN PIPE & FLUSHING BASIN CHANGES ON THIS SHEET.  
RMT 2/1/06

SURVEYED BY	C.H.A. & V.S.E.	DATE	12/93
DESIGNED BY	D.E.G.	DATE	11/01
DRAWN BY	J.S.L.	DATE	11/01
CHECKED BY	T.P.K.	DATE	11/01
DESIGN FILE NO.	/5116/vaot/vtdp15.dgn		
PROJ. NAME	BENNINGTON - HOOSICK D.P.I. 0146(D) C/3		
PROJ. NO.	P.I.N. 1306.60		
DWG NO.	DP-8	SHEET	115 OF 473

FILE NAME = J:\5116\VAOT\CONTRACT3\VTDP15.DGN  
DATE/TIME = 10/11/2001  
USER = 664