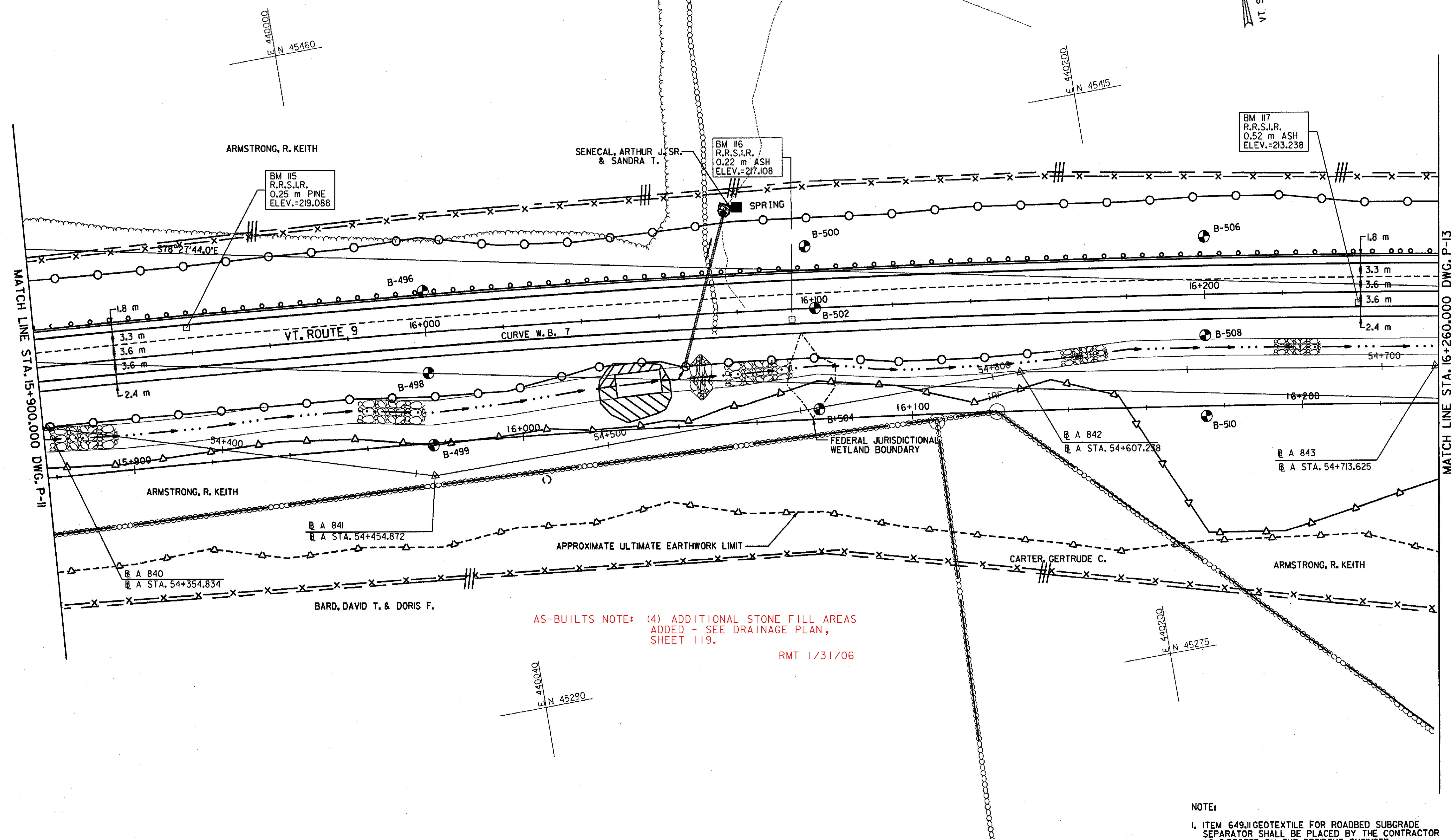


62L20 STEEL BEAM GUARDRAIL  
 STA. 15+900.0 - STA. 16+260.0 LT (360.0 m)



AS-BUILTS NOTE: (4) ADDITIONAL STONE FILL AREAS  
 ADDED - SEE DRAINAGE PLAN,  
 SHEET 119.  
 RMT 1/31/06

NOTE:  
 1. ITEM 649.11 GEOTEXTILE FOR ROADBED SUBGRADE  
 SEPARATOR SHALL BE PLACED BY THE CONTRACTOR  
 AS DIRECTED BY THE RESIDENT ENGINEER.

FILE NAME = U:\5116\VAOT\CONTRACT3\VTPI9.DGN  
 DATE/TIME = 10/11/2001  
 USER = 664

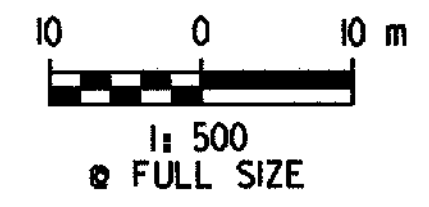
DATUM	
VERTICAL	NAVD 88
HORIZONTAL	NAD 83 (1992)

CURVE W.B. 7	
P.C.C.	= STA. 15+308.571
P.T.	= STA. 16+352.419
$\Delta$	= 16° 50' 50.4" RT
R	= 3550.000 m
T	= 525.717 m
L	= 1043.848 m
E	= 38.715 m
e <sub>max</sub> = 0.020 DN, RT	

620.25 WOVEN WIRE FENCE WITH STEEL POSTS	
STA. 15+900.000 - STA. 16+000.000	LT (101.0 m)
STA. 15+900.000 - STA. 16+100.000	RT (198.6 m)
STA. 16+000.000 - STA. 16+074.142	LT (74.8 m)
STA. 16+074.142 - STA. 16+100.000	LT (26.1 m)
STA. 16+100.000 - STA. 16+160.000	LT (60.5 m)
STA. 16+100.000 - STA. 16+133.810	RT (33.5 m)
STA. 16+133.810 - STA. 16+210.270	RT (75.5 m)
STA. 16+160.000 - STA. 16+260.000	LT (101.0 m)
STA. 16+210.270 - STA. 16+260.000	RT (41.5 m)

620.40 STEEL BRACE FOR WOVEN WIRE FENCE	
STA. 15+950.000	RT (2 EA)
STA. 16+000.000	LT (2 EA)
STA. 16+074.142	LT (2 EA)
STA. 16+100.000	LT (2 EA)
STA. 16+100.000	RT (2 EA)
STA. 16+133.810	RT (2 EA)
STA. 16+160.000	LT (2 EA)
STA. 16+210.270	RT (2 EA)
STA. 16+250.000	LT (2 EA)

649.11 GEOTEXTILE FOR ROADBED SUBGRADE SEPARATOR	
STA. 16+040.000 - STA. 16+110.000	(2,203 m <sup>2</sup> )



<b>PLAN</b>	SURVEYED BY	C.H.A. & V.S.E.	DATE	12/93
	DESIGNED BY	D.E.G.	DATE	11/01
	DRAWN BY	J.S.L.	DATE	11/01
	CHECKED BY	T.P.K.	DATE	11/01
	DESIGN FILE NO.	/5116/vaot/vtp19.dgn		
PROJ. NAME	BENNINGTON - HOOSICK D.P.I. 01461) C/3			
PROJ. NO.	P.I.N. 1306.60			
DWG NO.	P-12	SHEET 85 OF 473		