

616.35 TREATED TIMBER CURB
STA. 15+439.4 - STA. 15+544.4 RT (105.0 m)

621.20 STEEL BEAM GUARDRAIL
STA. 15+200.3 - STA. 15+245.9 RT (45.6 m)
STA. 15+202.6 - STA. 15+560.0 LT (357.4 m)
STA. 15+329.0 - STA. 15+560.0 RT (231.0 m)

621.505 MANUFACTURED TERMINAL SECTION (FLARED)
STA. 15+245.9 RT
STA. 15+329.0 RT



BRUSO, DAVID

MAXON, RANDY G. & DONNA M.

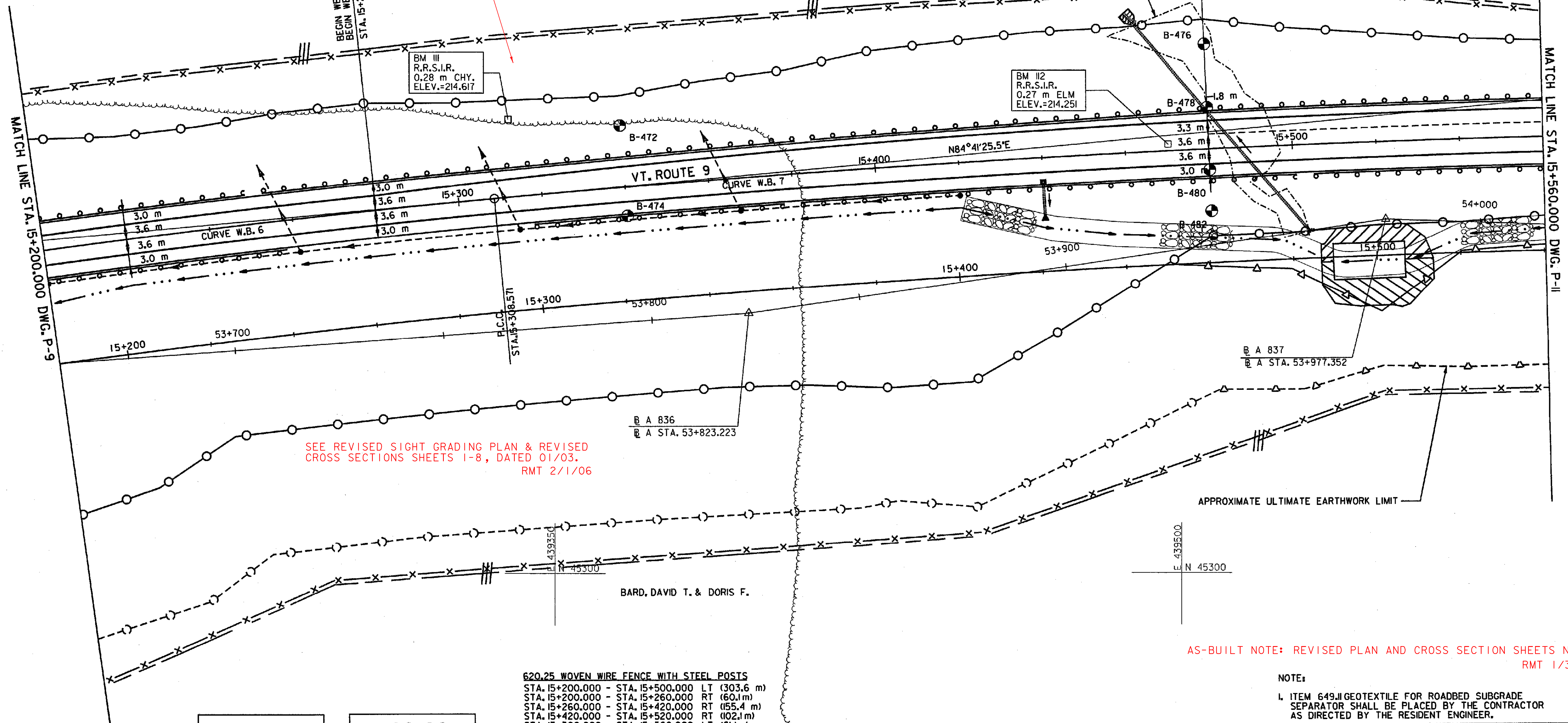
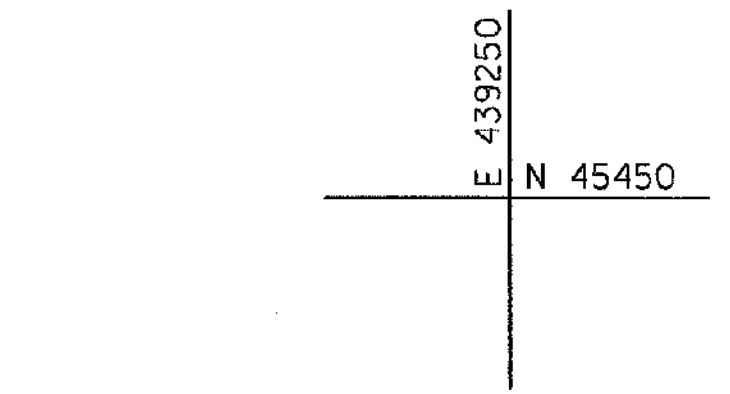
BARD, DAVID T. & DORIS F.

SEE REVISED PLAN SHEET 83, DATED 01/03-A,
FOR "PROPOSED" REVISED SLOPE LIMITS (RT & LT)
RMT 1/31/06

BEGIN WESTBOUND CLIMBING LANE WIDENING
BEG. WESTBOUND SHOULDER TAPER
STA. 15+280.000

BEGIN FULL-WIDTH WESTBOUND CLIMBING LANE
END WESTBOUND CLIMBING LANE WIDENING
END WESTBOUND SHOULDER TAPER
STA. 15+480.000

FEDERAL JURISDICTIONAL
WETLAND BOUNDARY



SEE REVISED SIGHT GRADING PLAN & REVISED
CROSS SECTIONS SHEETS 1-8, DATED 01/03.
RMT 2/1/06

APPROXIMATE ULTIMATE EARTHWORK LIMIT

BARD, DAVID T. & DORIS F.

AS-BUILT NOTE: REVISED PLAN AND CROSS SECTION SHEETS NOTED.
RMT 1/31/06

NOTE:
1. ITEM 649.11 GEOTEXTILE FOR ROADBED SUBGRADE
SEPARATOR SHALL BE PLACED BY THE CONTRACTOR
AS DIRECTED BY THE RESIDENT ENGINEER.

620.25 WOVEN WIRE FENCE WITH STEEL POSTS
STA. 15+200.000 - STA. 15+500.000 LT (303.6 m)
STA. 15+200.000 - STA. 15+260.000 RT (60.1 m)
STA. 15+260.000 - STA. 15+420.000 RT (155.4 m)
STA. 15+420.000 - STA. 15+520.000 RT (102.1 m)
STA. 15+500.000 - STA. 15+560.000 LT (61.1 m)
STA. 15+520.000 - STA. 15+560.000 RT (38.9 m)

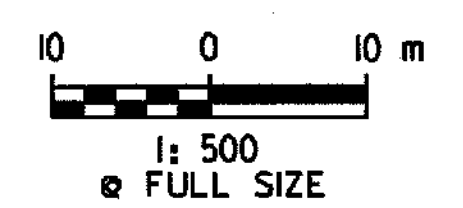
620.40 STEEL BRACE FOR WOVEN WIRE FENCE
STA. 15+260.000 RT (2 EA)
STA. 15+350.000 LT (2 EA)
STA. 15+420.000 RT (2 EA)
STA. 15+500.000 LT (2 EA)
STA. 15+520.000 LT (2 EA)

649.11 GEOTEXTILE FOR ROADBED SUBGRADE SEPARATOR
STA. 15+450.000 - STA. 15+510.000 (3,318 m²)

CURVE W.B. 6
P.C.C.= STA. 14+424.255
P.T.C.= STA. 15+308.571
 $\Delta=20^{\circ}53'37.8''$ RT
R=2425.000 m
T=447.124 m
L=884.316 m
E=40.876 m
 $e_{max}=0.022$ DN, RT

CURVE W.B. 7
P.C.C.= STA. 15+308.571
P.T.= STA. 16+352.419
 $\Delta=16^{\circ}50'50.4''$ RT
R=3550.000 m
T=525.717 m
L=1043.848 m
E=38.715 m
 $e_{max}=0.020$ DN, RT

DATUM
VERTICAL NAVD 88
HORIZONTAL NAD 83 (1992)



PLAN	SURVEYED BY	C.H.A. & V.S.E.	DATE	12/93
	DESIGNED BY	D.E.G.	DATE	11/01
	DRAWN BY	J.S.L.	DATE	11/01
	CHECKED BY	T.P.K.	DATE	11/01
	DESIGN FILE NO.	/5116/vaat/vtpt17.dgn		
PROJ. NAME	BENNINGTON - HOOSICK D.P.I. 014611 C/3			
PROJ. NO.	P.I.N. 1306.60			
DWG NO.	P-10	SHEET	83	OF 473

FILE NAME = J:\5116\VAOT\CONTRACT3\VTPT17.DGN
DATE/TIME = 10/11/2001
USER = 664