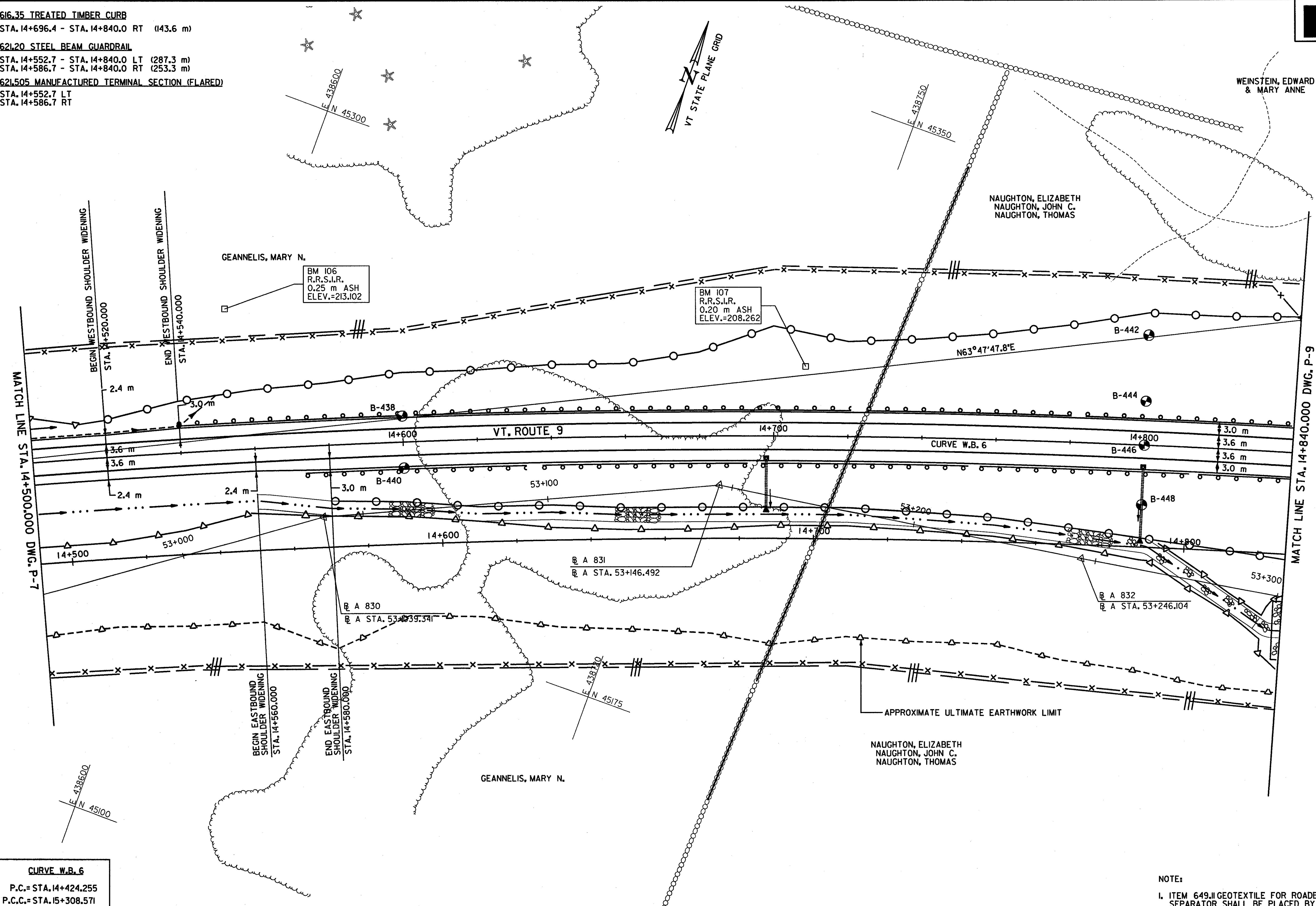


616.35 TREATED TIMBER CURB
 STA. 14+696.4 - STA. 14+840.0 RT (143.6 m)
 621.20 STEEL BEAM GUARDRAIL
 STA. 14+552.7 - STA. 14+840.0 LT (287.3 m)
 STA. 14+586.7 - STA. 14+840.0 RT (253.3 m)
 621.505 MANUFACTURED TERMINAL SECTION (FLARED)
 STA. 14+552.7 LT
 STA. 14+586.7 RT



CURVE W.B. 6
 P.C.= STA. 14+424.255
 P.C.C.= STA. 15+308.571
 Δ= 20° 53' 37.8" RT
 R= 2425.000 m
 T= 447.124 m
 L= 884.316 m
 E= 40.876 m
 e_{max}= 0.022 DN, RT

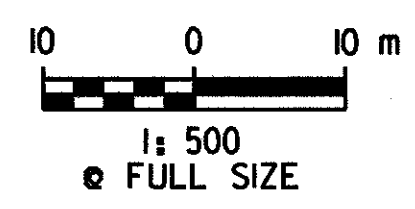
DATUM
 VERTICAL: NAVD 88
 HORIZONTAL: NAD 83 (1992)

620.13 CHAIN-LINK FENCE, 2.4 m (MOD.)
 STA. 14+828.200 - STA. 14+831.200 LT (3.0 m)
 STA. 14+831.200 - STA. 14+840.000 LT (12.6 m)
620.13 CHAIN-LINK FENCE, 2.4 m
 STA. 14+720.000 - STA. 14+840.000 RT (120.6 m)
 STA. 14+741.310 - STA. 14+828.200 LT (92.6 m)
620.22 BRACING ASSEMBLY FOR CHAIN-LINK FENCE, 2.4 m
 STA. 14+720.000 RT (1EA)
 STA. 14+741.310 LT (1EA)
 STA. 14+831.200 LT (1EA)

620.25 WOVEN WIRE FENCE WITH STEEL POSTS
 STA. 14+500.000 - STA. 14+600.000 LT (104.5 m)
 STA. 14+500.000 - STA. 14+540.000 RT (40.2 m)
 STA. 14+540.000 - STA. 14+697.120 RT (153.2 m)
 STA. 14+600.000 - STA. 14+700.000 LT (102.7 m)
 STA. 14+697.120 - STA. 14+720.000 RT (22.3 m)
 STA. 14+700.000 - STA. 14+741.310 LT (40.8 m)

620.40 STEEL BRACE FOR WOVEN WIRE FENCE
 STA. 14+540.000 RT (2 EA)
 STA. 14+600.000 LT (2 EA)
 STA. 14+697.120 RT (2 EA)
 STA. 14+700.000 LT (2 EA)
 STA. 14+720.000 RT (1EA)
 STA. 14+741.310 LT (1EA)

649.11 GEOTEXTILE FOR ROADBED SUBGRADE SEPARATOR
 STA. 14+500.000 - STA. 14+700.000 (1,331 m²)



NOTE:
 1. ITEM 649.11 GEOTEXTILE FOR ROADBED SUBGRADE SEPARATOR SHALL BE PLACED BY THE CONTRACTOR AS DIRECTED BY THE RESIDENT ENGINEER.

PLAN	SURVEYED BY	C.H.A. & V.S.E.	DATE	12/93
	DESIGNED BY	D.E.G.	DATE	11/01
	DRAWN BY	J.S.L.	DATE	11/01
	CHECKED BY	T.P.K.	DATE	11/01
DESIGN FILE NO.	/5116/vaot/vtp15.dgn			
PROJ. NAME	BENNINGTON - HOOSICK D.P.I. 0146(1) C/3			
PROJ. NO.	P.I.N. 1306.60			
DWG NO. P-8	SHEET 81 OF 473			

FILE NAME = c:\5116\VAOT\CONTRACT3\VTPI5.DGN
 DATE/TIME = 10/11/2001
 USER = 664