

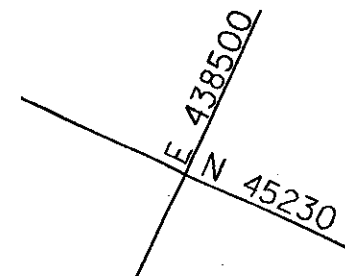
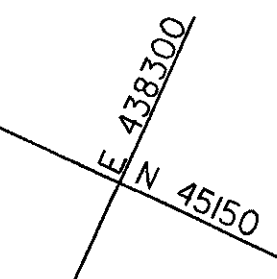
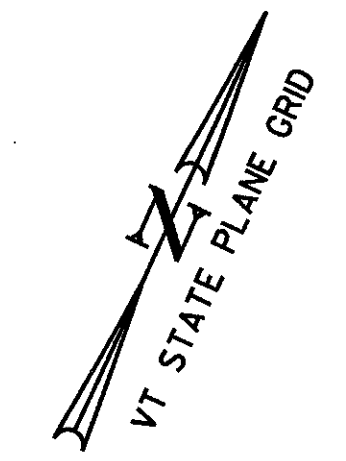
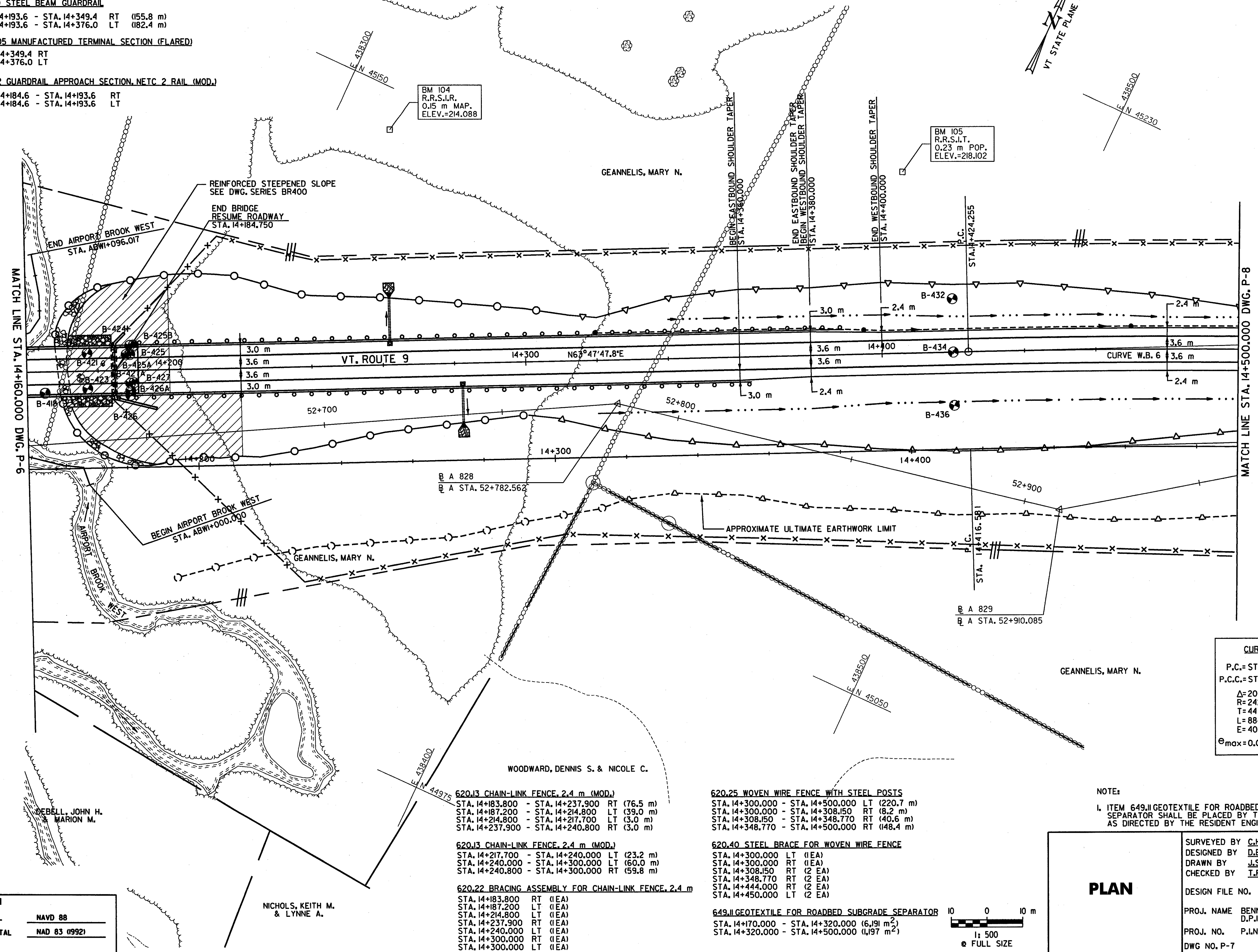
616.35 TREATED TIMBER CURB
 STA. 14+195.0 - STA. 14+265.0 LT (70.0 m)
 STA. 14+195.0 - STA. 14+285.0 RT (90.0 m)

621.20 STEEL BEAM GUARDRAIL
 STA. 14+193.6 - STA. 14+349.4 RT (155.8 m)
 STA. 14+193.6 - STA. 14+376.0 LT (182.4 m)

621.505 MANUFACTURED TERMINAL SECTION (FLARED)
 STA. 14+349.4 RT
 STA. 14+376.0 LT

621.72 GUARDRAIL APPROACH SECTION, NETC 2 RAIL (MOD.)
 STA. 14+184.6 - STA. 14+193.6 RT
 STA. 14+184.6 - STA. 14+193.6 LT

651.40 GRUBBING MATERIAL
 STA. 14+168.1 - STA. 14+184.4 LT (16.9 m²)
 STA. 14+175.7 - STA. 14+193.1 RT (37.8 m²)



BM 104
 R.R.S.I.R.
 0.15 m MAP.
 ELEV.=214.088

BM 105
 R.R.S.I.R.
 0.23 m POP.
 ELEV.=218.102

CURVE W.B. 6
 P.C.= STA. 14+424.255
 P.C.C.= STA. 15+308.571
 $\Delta=20^{\circ}53'37.8''$ RT
 R=2425.000 m
 T=447.124 m
 L=884.316 m
 E=40.876 m
 $e_{max}=0.022$ DN. RT

FILE NAME = U:\5116\VAOT\CONTRACT3\VTPI4.DGN
 DATE/TIME = 10/11/2001
 USER = 664

DATUM	
VERTICAL	NAVD 88
HORIZONTAL	NAD 83 (1992)

NICHOLS, KEITH M.
 & LYNNE A.

620.13 CHAIN-LINK FENCE, 2.4 m (MOD.)
 STA. 14+183.800 - STA. 14+237.900 RT (76.5 m)
 STA. 14+187.200 - STA. 14+214.800 LT (39.0 m)
 STA. 14+214.800 - STA. 14+217.700 LT (3.0 m)
 STA. 14+237.900 - STA. 14+240.800 RT (3.0 m)

620.13 CHAIN-LINK FENCE, 2.4 m (MOD.)
 STA. 14+217.700 - STA. 14+240.000 LT (23.2 m)
 STA. 14+240.000 - STA. 14+300.000 LT (60.0 m)
 STA. 14+240.800 - STA. 14+300.000 RT (59.8 m)

620.22 BRACING ASSEMBLY FOR CHAIN-LINK FENCE, 2.4 m
 STA. 14+183.800 RT (1EA)
 STA. 14+187.200 LT (1EA)
 STA. 14+214.800 LT (1EA)
 STA. 14+237.900 RT (1EA)
 STA. 14+240.000 LT (1EA)
 STA. 14+300.000 RT (1EA)
 STA. 14+300.000 LT (1EA)

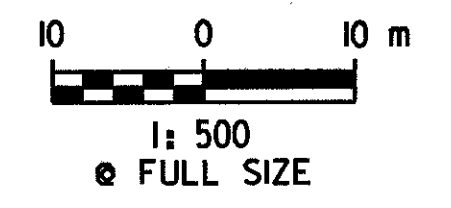
620.25 WOVEN WIRE FENCE WITH STEEL POSTS
 STA. 14+300.000 - STA. 14+500.000 LT (220.7 m)
 STA. 14+300.000 - STA. 14+308.150 RT (8.2 m)
 STA. 14+308.150 - STA. 14+348.770 RT (40.6 m)
 STA. 14+348.770 - STA. 14+500.000 RT (148.4 m)

620.40 STEEL BRACE FOR WOVEN WIRE FENCE
 STA. 14+300.000 LT (1EA)
 STA. 14+300.000 RT (1EA)
 STA. 14+308.150 RT (2 EA)
 STA. 14+348.770 RT (2 EA)
 STA. 14+444.000 RT (2 EA)
 STA. 14+450.000 LT (2 EA)

649.11 GEOTEXTILE FOR ROADBED SUBGRADE SEPARATOR
 STA. 14+170.000 - STA. 14+320.000 (6,191 m²)
 STA. 14+320.000 - STA. 14+500.000 (4,197 m²)

NOTE:
 1. ITEM 649.11 GEOTEXTILE FOR ROADBED SUBGRADE SEPARATOR SHALL BE PLACED BY THE CONTRACTOR AS DIRECTED BY THE RESIDENT ENGINEER.

PLAN



SURVEYED BY	C.H.A. & V.S.E.	DATE	12/93
DESIGNED BY	D.E.G.	DATE	11/01
DRAWN BY	J.S.L.	DATE	11/01
CHECKED BY	T.P.K.	DATE	11/01
DESIGN FILE NO.	/5116/vaot/vtPI4.dgn		
PROJ. NAME	BENNINGTON - HOOSICK D.P.I. 01460) C/3		
PROJ. NO.	P.I.N. 1306.60		
DWG NO. P-7	SHEET 80 OF 473		