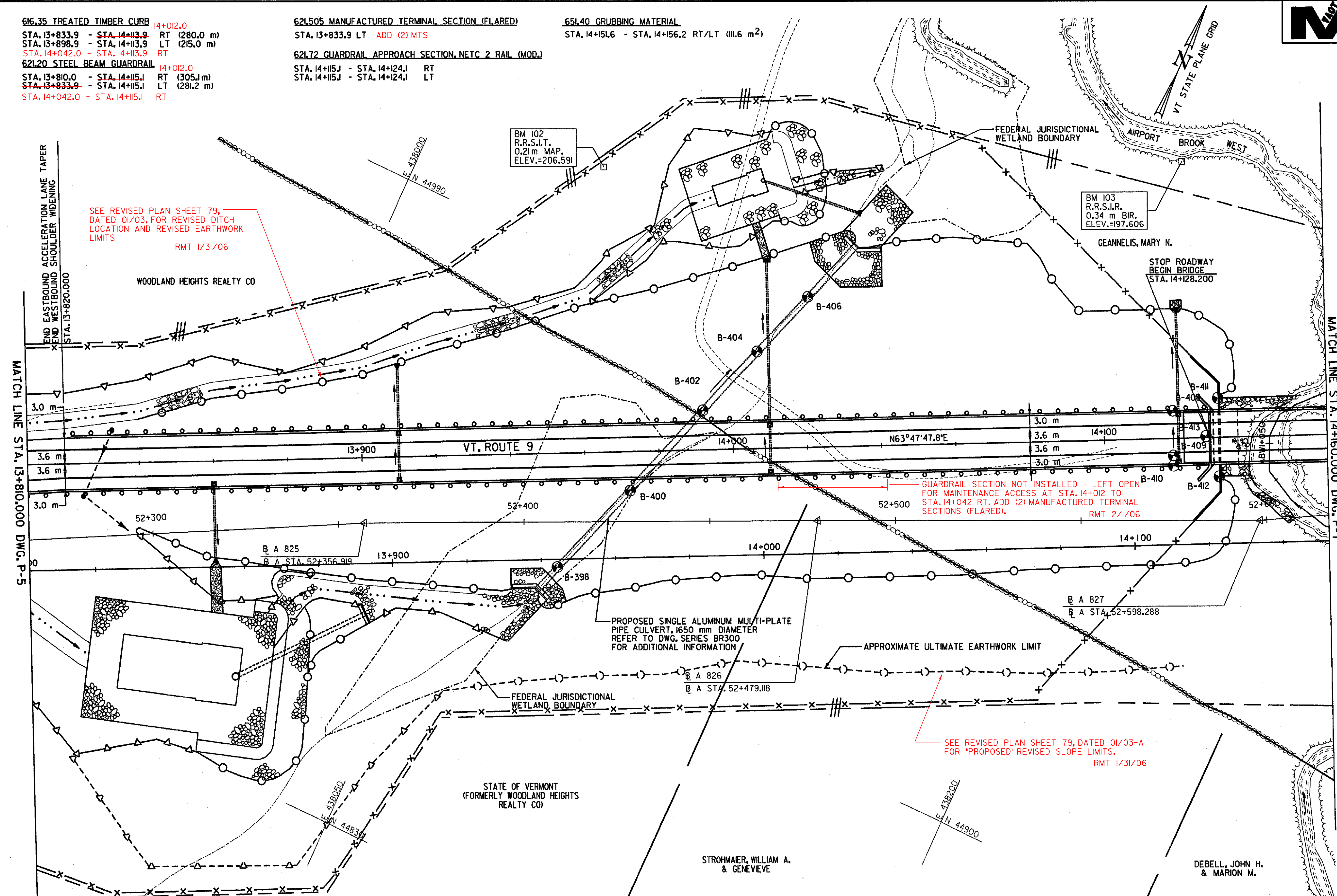


616.35 TREATED TIMBER CURB 14+012.0
 STA. 13+833.9 - STA. 14+113.9 RT (280.0 m)
 STA. 13+898.9 - STA. 14+113.9 LT (215.0 m)
 STA. 14+042.0 - STA. 14+113.9 RT
 621.20 STEEL BEAM GUARDRAIL 14+012.0
 STA. 13+810.0 - STA. 14+115.1 RT (305.1 m)
 STA. 13+833.9 - STA. 14+115.1 LT (281.2 m)
 STA. 14+042.0 - STA. 14+115.1 RT

621.505 MANUFACTURED TERMINAL SECTION (FLARED)
 STA. 13+833.9 LT ADD (2) MTS
 621.72 GUARDRAIL APPROACH SECTION, NETC 2 RAIL (MOD.)
 STA. 14+115.1 - STA. 14+124.1 RT
 STA. 14+115.1 - STA. 14+124.1 LT

651.40 GRUBBING MATERIAL
 STA. 14+151.6 - STA. 14+156.2 RT/LT (111.6 m²)



SEE REVISED PLAN SHEET 79, DATED 01/03, FOR REVISED DITCH LOCATION AND REVISED EARTHWORK LIMITS
 RMT 1/31/06

GUARDRAIL SECTION NOT INSTALLED - LEFT OPEN FOR MAINTENANCE ACCESS AT STA. 14+012 TO STA. 14+042 RT. ADD (2) MANUFACTURED TERMINAL SECTIONS (FLARED).
 RMT 2/1/06

SEE REVISED PLAN SHEET 79, DATED 01/03-A FOR 'PROPOSED' REVISED SLOPE LIMITS.
 RMT 1/31/06

MATCH LINE STA. 13+810.000 DWG. P-5

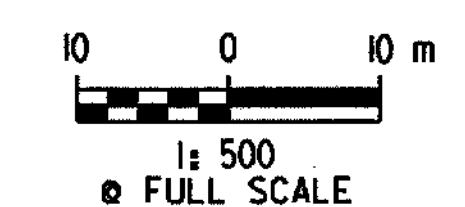
MATCH LINE STA. 14+160.000 DWG. P-7

DATUM	
VERTICAL	NAVD 88
HORIZONTAL	NAD 83 (1992)

- 649.11 GEOTEXTILE FOR ROADBED SUBGRADE SEPARATOR
 STA. 13+915.000 - STA. 14+060.000 (10,972 m²)
- 620.13 CHAIN-LINK FENCE, 2.4 m (MOD.)
 STA. 14+063.000 - STA. 14+065.900 LT (3.0 m)
 STA. 14+065.900 - STA. 14+124.600 LT (83.1 m)
 STA. 14+074.200 - STA. 14+077.200 RT (3.0 m)
 STA. 14+077.200 - STA. 14+124.800 RT (67.3 m)
- 620.13 CHAIN-LINK FENCE, 2.4 m
 STA. 13+992.840 - STA. 14+074.200 RT (81.4 m)
 STA. 14+025.500 - STA. 14+063.000 LT (38.9 m)
- 620.22 BRACING ASSEMBLY FOR CHAIN-LINK FENCE, 2.4 m
 STA. 13+992.840 RT (1EA)
 STA. 14+025.500 LT (1EA)
 STA. 14+065.900 LT (1EA)
 STA. 14+077.200 RT (1EA)
 STA. 14+124.600 LT (1EA)
 STA. 14+124.800 RT (1EA)

- 620.25 WOVEN WIRE FENCE WITH STEEL POSTS
 STA. 13+810.000 - STA. 13+840.000 LT (30.0 m)
 STA. 13+810.000 - STA. 13+830.000 RT (20.3 m)
 STA. 13+830.000 - STA. 13+888.000 RT (58.0 m)
 STA. 13+840.000 - STA. 13+923.210 LT (85.1 m)
 STA. 13+888.000 - STA. 13+894.668 RT (11.2 m)
 STA. 13+894.668 - STA. 13+920.000 RT (43.2 m)
 STA. 13+920.000 - STA. 13+992.840 RT (72.8 m)
 STA. 13+923.210 - STA. 13+988.500 LT (77.5 m)
 STA. 13+988.500 - STA. 14+025.500 LT (36.9 m)
- 620.40 STEEL BRACE FOR WOVEN WIRE FENCE
 STA. 13+830.000 RT (2 EA)
 STA. 13+840.000 LT (2 EA)
 STA. 13+888.000 RT (2 EA)
 STA. 13+894.668 RT (2 EA)
 STA. 13+920.000 RT (2 EA)
 STA. 13+923.210 LT (2 EA)
 STA. 13+988.500 LT (2 EA)
 STA. 13+992.840 RT (1EA)
 STA. 14+025.500 LT (1EA)

AS-BUILT NOTES: REVISED PLAN SHEET AND REVISED GUARDRAIL ITEMS NOTED.
 RMT 2/1/06



PLAN

NOTE:
 1. ITEM 649.11 GEOTEXTILE FOR ROADBED SUBGRADE SEPARATOR SHALL BE PLACED BY THE CONTRACTOR AS DIRECTED BY THE RESIDENT ENGINEER.

SURVEYED BY	C.H.A. & V.S.E.	DATE	12/93
DESIGNED BY	D.E.G.	DATE	11/01
DRAWN BY	J.S.L.	DATE	11/01
CHECKED BY	T.P.K.	DATE	11/01
DESIGN FILE NO.	/5116/vaot/vt13.dgn		
PROJ. NAME	BENNINGTON - HOOSICK D.P.I. 0146(1) C/3		
PROJ. NO.	P.I.N.1306.60		
DWG NO. P-6	SHEET 79 OF 473		

FILE NAME = J:\5116\VAOT\CONTRACT3\VT13.DGN
 DATE/TIME = 12/15/2001
 USER = 664