

FED. ROAD REG. NO.	STATE	FEDERAL AID PROJECT NO.	SHEET NO.	TOTAL SHEETS
1	N.Y.	0146001	65	92

BENNINGTON CONNECTOR S.H. 98-2
 P.I.N. 1306.60
 WHITEHOUSE BRIDGE - VERMONT STATE LINE S.H. 1426
 RENSSELAER COUNTY

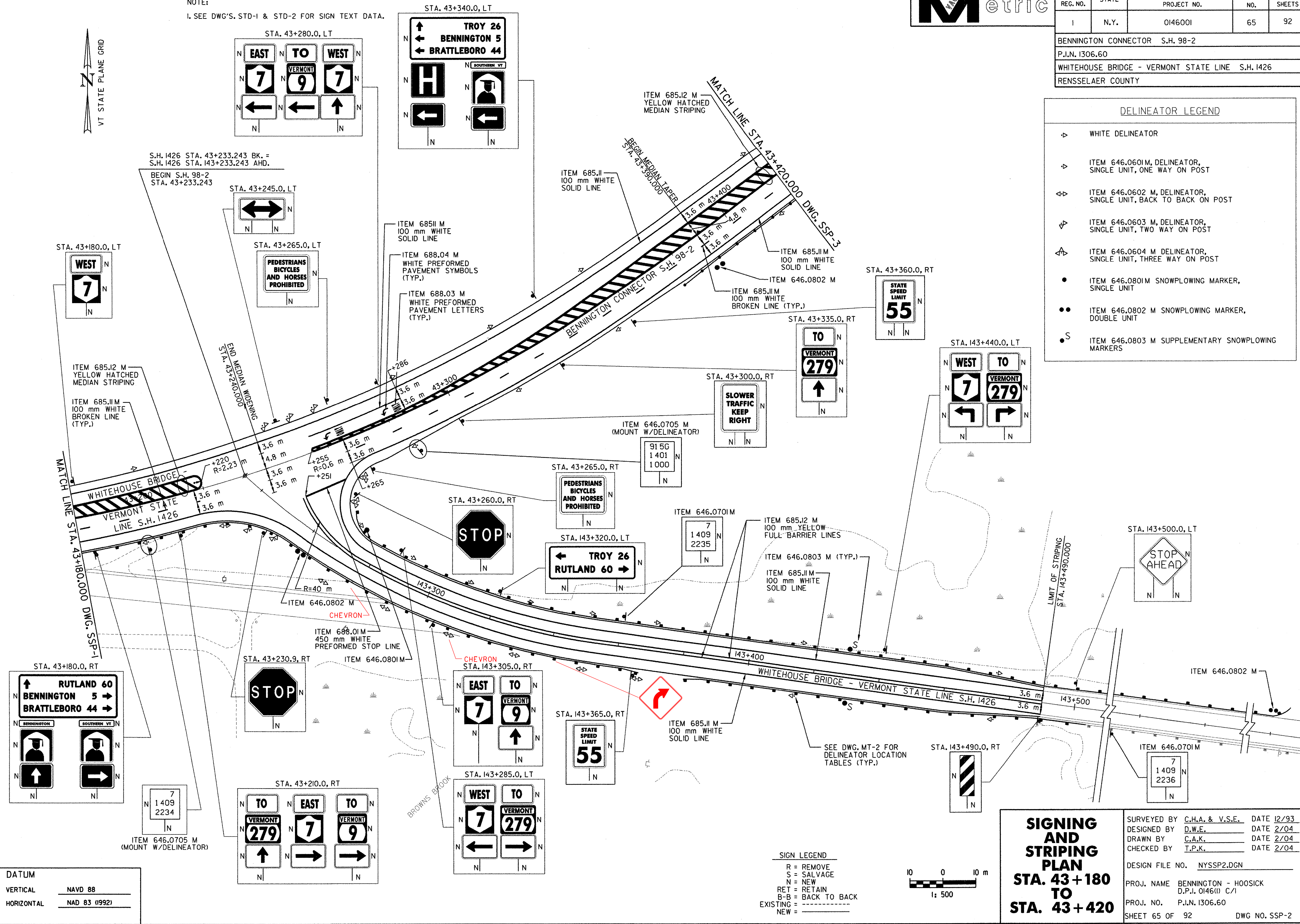
NOTE:
 1. SEE DWG'S. STD-1 & STD-2 FOR SIGN TEXT DATA.

2/04 DATE I. BURTNICK CHECKED BY C. KAHLBAUGH DRAFTED BY D. GOZALKOWSKI CHECKED BY D. EMERICH ESTIMATED BY D. GOZALKOWSKI CHECKED BY D. EMERICH DESIGNED BY I. KARIS IN CHARGE OF
 FILE NAME = u:\SR15\mades\contract\yngsp2.dgn
 DATE/TIME = 2/23/2004
 USER = 225



DELINEATOR LEGEND

- ▷ WHITE DELINEATOR
- ▷ ITEM 646.0601M, DELINEATOR, SINGLE UNIT, ONE WAY ON POST
- ▷ ITEM 646.0602 M, DELINEATOR, SINGLE UNIT, BACK TO BACK ON POST
- ▷ ITEM 646.0603 M, DELINEATOR, SINGLE UNIT, TWO WAY ON POST
- ▷ ITEM 646.0604 M DELINEATOR, SINGLE UNIT, THREE WAY ON POST
- ITEM 646.0801M SNOWPLOWING MARKER, SINGLE UNIT
- ITEM 646.0802 M SNOWPLOWING MARKER, DOUBLE UNIT
- S ITEM 646.0803 M SUPPLEMENTARY SNOWPLOWING MARKERS



STA. 43+180.0, RT

RUTLAND 60
BENNINGTON 5
BRATTLEBORO 44

BENNINGTON
SOUTHERN VT

↑
 ↓

ITEM 646.0705 M (MOUNT W/DELINEATOR)

7
1409
2234

STA. 43+210.0, RT

TO **EAST** **TO**
VERMONT **7** **VERMONT**
279 **7** **9**

↑ → →

STA. 143+285.0, LT

WEST **TO**
7 **VERMONT**
279 **9**

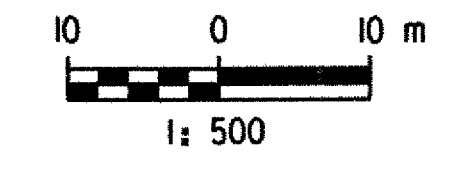
← →

STA. 143+365.0, RT

STATE SPEED LIMIT
55

SIGN LEGEND

R = REMOVE
 S = SALVAGE
 N = NEW
 RET = RETAIN
 B-B = BACK TO BACK
 EXISTING = - - - - -
 NEW = _____



SIGNING AND STRIPING PLAN
STA. 43 + 180 TO STA. 43 + 420

SURVEYED BY C.H.A. & V.S.E. DATE 12/93
 DESIGNED BY D.W.E. DATE 2/04
 DRAWN BY C.A.K. DATE 2/04
 CHECKED BY I.P.K. DATE 2/04

DESIGN FILE NO. NYSSP2.DGN
 PROJ. NAME BENNINGTON - HOOSICK D.P.I. 0146(I) C/1
 PROJ. NO. P.I.N. 1306.60
 SHEET 65 OF 92 DWG NO. SSP-2

DATUM

VERTICAL **NAVD 88**
 HORIZONTAL **NAD 83 (1992)**