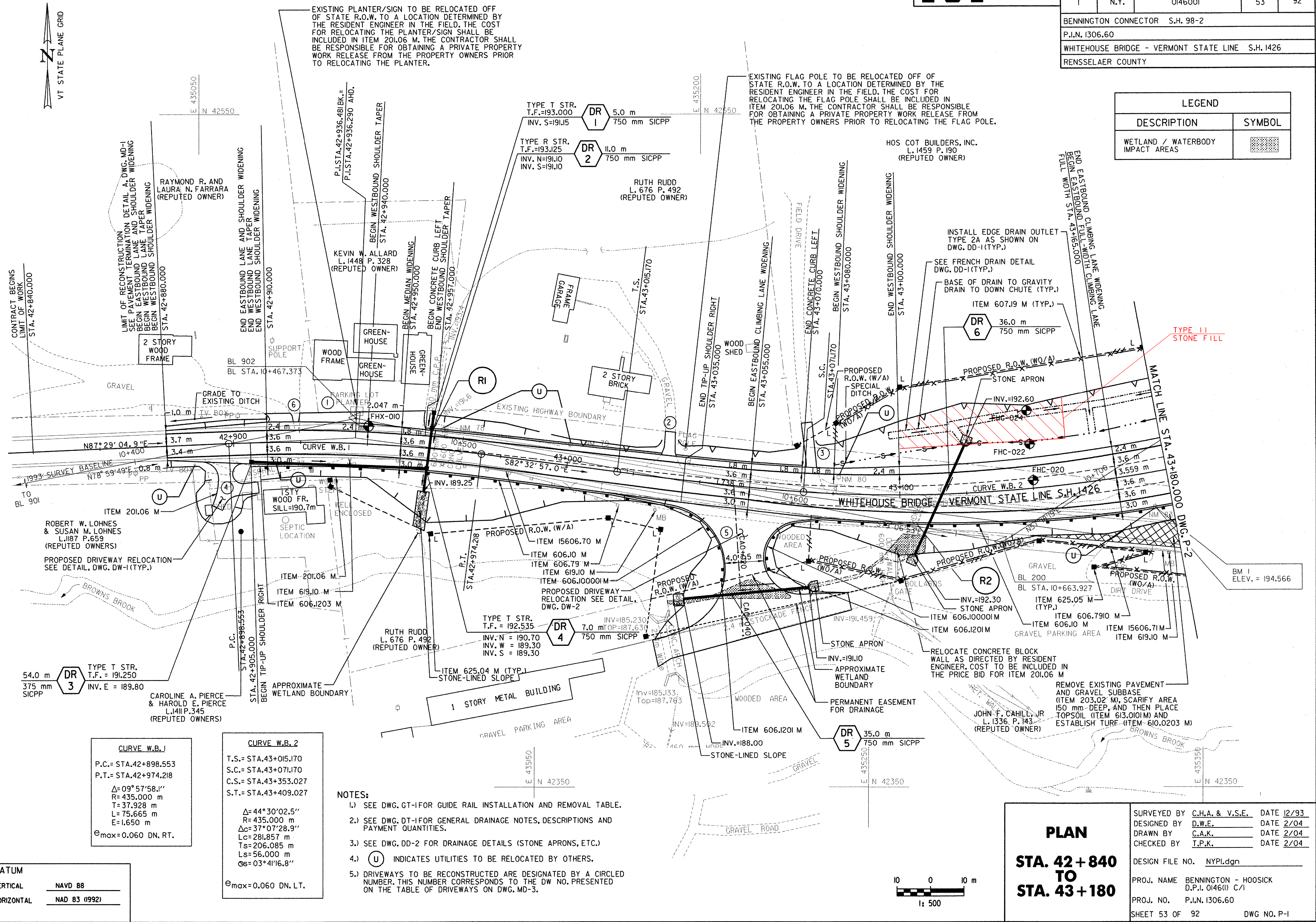


FED. ROAD REG. NO.	STATE	FEDERAL AID PROJECT NO.	SHEET NO.	TOTAL SHEETS
I	N.Y.	0146001	53	92
BENNINGTON CONNECTOR S.H. 98-2				
P.I.N. 1306.60				
WHITEHOUSE BRIDGE - VERMONT STATE LINE S.H. 1426				
RENSSELAER COUNTY				

LEGEND	
DESCRIPTION	SYMBOL
WETLAND / WATERBODY IMPACT AREAS	

FILE NAME = g:\2010\12\20\122004.dwg  
 DATE/TIME = 12/20/2004 10:22:25  
 USER = 2225  
 IN CHARGE OF T. KARIS  
 DESIGNED BY D. EMERICH  
 CHECKED BY D. GOZALKOWSKI  
 ESTIMATED BY D. EMERICH  
 CHECKED BY D. GOZALKOWSKI  
 DRAFTED BY C. KAHLBAUGH  
 CHECKED BY I. BURTNICK  
 DATE 2/04



**CURVE W.B. 1**

P.C. = STA. 42+898.553
P.T. = STA. 42+974.218
$\Delta = 09^{\circ} 57' 58.1''$
R = 435.000 m
T = 37.928 m
L = 75.665 m
E = 1.650 m
$e_{max} = 0.060$ DN. RT.

**CURVE W.B. 2**

T.S. = STA. 43+015.170
S.C. = STA. 43+071.170
C.S. = STA. 43+353.027
S.T. = STA. 43+409.027
$\Delta = 44^{\circ} 30' 02.5''$
R = 435.000 m
$\Delta c = 37^{\circ} 07' 28.9''$
Lc = 281.857 m
Ts = 206.085 m
Ls = 56.000 m
$\Delta s = 03^{\circ} 41' 16.8''$
$e_{max} = 0.060$ DN. LT.

- NOTES:**
- 1.) SEE DWG. GT-1 FOR GUIDE RAIL INSTALLATION AND REMOVAL TABLE.
  - 2.) SEE DWG. DT-1 FOR GENERAL DRAINAGE NOTES, DESCRIPTIONS AND PAYMENT QUANTITIES.
  - 3.) SEE DWG. DD-2 FOR DRAINAGE DETAILS (STONE APRONS, ETC.)
  - 4.) (U) INDICATES UTILITIES TO BE RELOCATED BY OTHERS.
  - 5.) DRIVEWAYS TO BE RECONSTRUCTED ARE DESIGNATED BY A CIRCLED NUMBER. THIS NUMBER CORRESPONDS TO THE DW NO. PRESENTED ON THE TABLE OF DRIVEWAYS ON DWG. MD-3.

**DATUM**

VERTICAL	NAVD 88
HORIZONTAL	NAD 83 (1992)

**PLAN**

**STA. 42+840 TO STA. 43+180**

SURVEYED BY	C.H.A. & V.S.E.	DATE	12/93
DESIGNED BY	D.W.E.	DATE	2/04
DRAWN BY	C.A.K.	DATE	2/04
CHECKED BY	T.P.K.	DATE	2/04
DESIGN FILE NO.	NYPl.dgn		
PROJ. NAME	BENNINGTON - HOOSICK D.P.I. 0146(I) C/1		
PROJ. NO.	P.I.N. 1306.60		
SHEET	53 OF 92	DWG NO.	P-1

