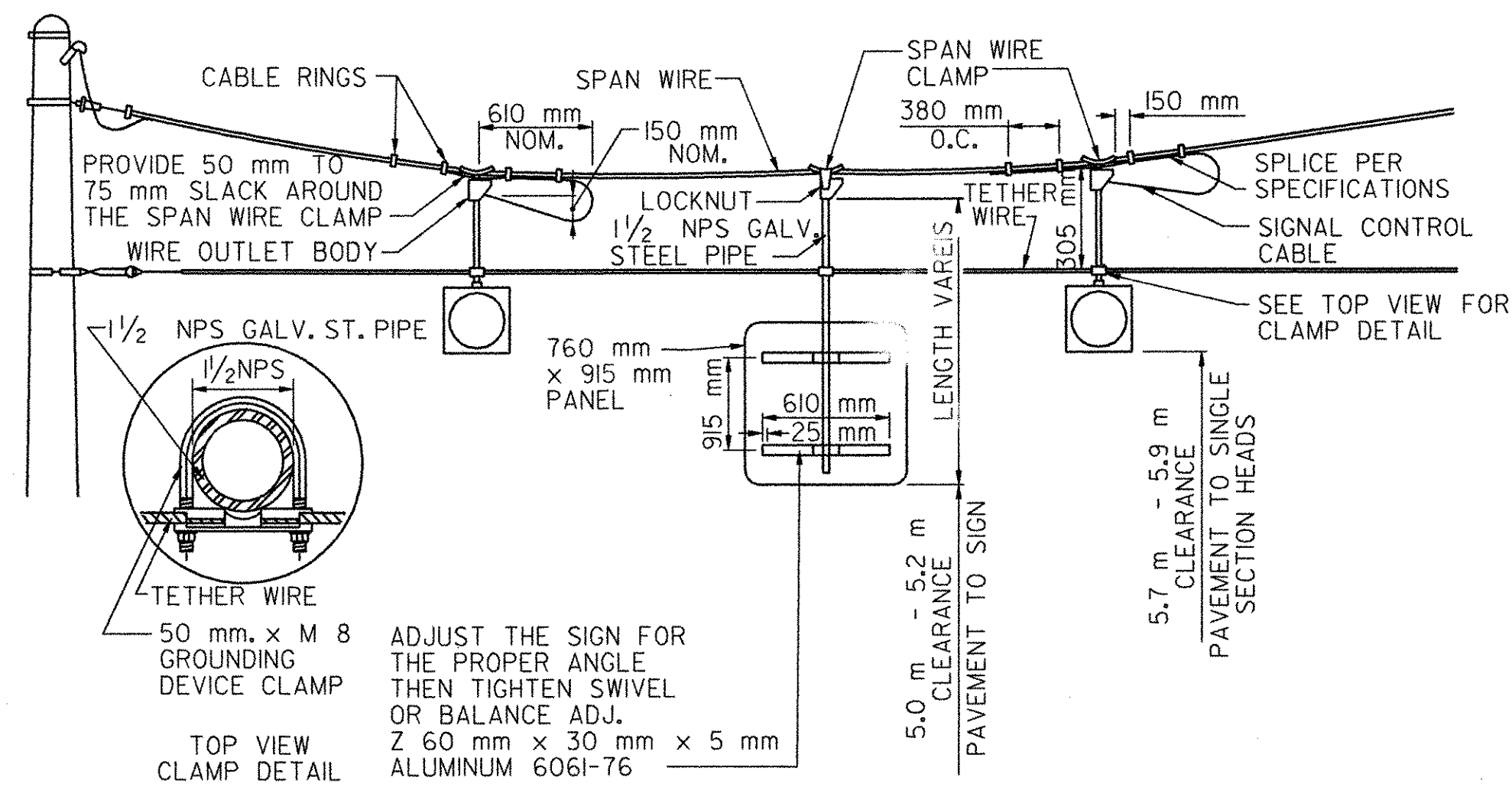
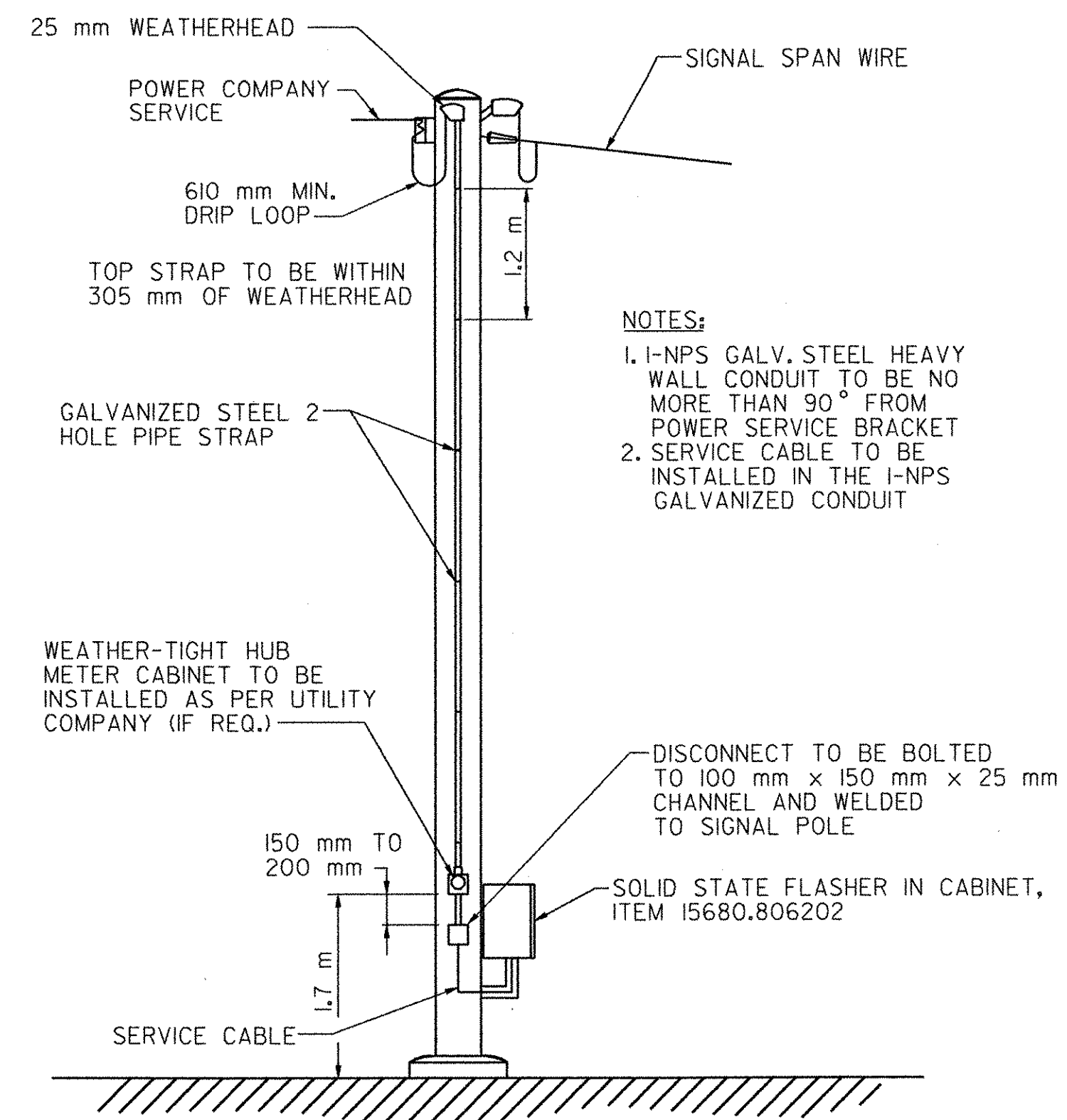


FED. ROAD REG. NO.	STATE	FEDERAL AID PROJECT NO.	SHEET NO.	TOTAL SHEETS
I	N.Y.	0146001	71	92
BENNINGTON CONNECTOR S.H. 98-2				
P.I.N. 1306.60				
WHITEHOUSE BRIDGE - VERMONT STATE LINE S.H. 1426				
RENSSELAER COUNTY				

FILE NAME = \\ARJIS\NYSDOT\CONTRACT\NYTSI-FLASH.dgn
 DATE/TIME = 2/23/2004
 USER = 225
 IN CHARGE OF I. KARIS
 DESIGNED BY I. KARIS
 CHECKED BY C. PRISK
 ESTIMATED BY C. PRISK
 DRAFTED BY M. WIESZCHOWSKI
 CHECKED BY M. WIESZCHOWSKI
 DRAFTED BY C. KAHLBAUGH
 CHECKED BY C. KAHLBAUGH
 DATE 2/04
 CHECKED BY I. BURTNICK



SPAN WIRE SIGN MOUNTING DETAIL
WITH UPPER TETHER WIRE
N.T.S.



TRAFFIC SIGNAL POLE LAYOUT
(OVERHEAD SERVICE)
N.T.S.

ESTIMATE OF QUANTITIES			
ITEM	DESCRIPTION	UNIT	QNTY. TOTAL
206.03 M	CONDUIT EXCAVATION AND BACKFILL INCLUDING SURFACE RESTORATION	m	5
680.5001 M	POLE EXCAVATION AND CONCRETE FOUNDATION	m ³	6
680.510501 M	PULLBOX, RECTANGULAR, 650 mm x 450 mm, REINFORCED CONCRETE	EA	2
680.520103 M	CONDUIT METAL STEEL, ZINC COATED, 1NPS	m	10
680.520106 M	CONDUIT METAL STEEL, ZINC COATED, 2 NPS	m	5
680.603011 M	TRAFFIC SIGNAL POLE-SPAN WIRE, 30 kN LOAD, 11m LENGTH	EA	2
680.7002 M	DUAL SPAN WIRE WITH UPPER TETHER WIRE	EA	1
680.730514 M	SIGNAL CABLE, 5 CONDUCTOR, 14 AWG	m	140
680.731514 M	SIGNAL CABLE, 15 CONDUCTOR, 14 AWG	m	40
15680.806202 M	INTERSECTION FLASHER (SOLID STATE) WITH CABINET	EA	1
680.810101 M	TRAFFIC SIGNAL MODULE - 300 mm, RED BALL, LED	EA	2
680.810103 M	TRAFFIC SIGNAL MODULE - 300 mm, YELLOW BALL, LED	EA	4
680.810107 M	TRAFFIC SIGNAL SECTION - TYPE I, (300 mm)	EA	6
680.8204 M	OVERHEAD SIGN ASSEMBLY, TYPE D	EA	1
01680.9092 M	ELECTRIC METER SOCKET, 100A, SINGLE PHASE, 120V	EA	1
15680.94 M	RAINTIGHT DISCONNECT BOX	EA	1
15680.950106 M	SERVICE CABLE 1 CONDUCTOR, NO. 06 AWG	m	100

DATUM	
VERTICAL	NAVD 88
HORIZONTAL	NAD 83 (1992)

TRAFFIC SIGNAL DETAILS

SURVEYED BY	C.H.A. & V.S.E.	DATE	12/93
DESIGNED BY	D.W.E.	DATE	2/04
DRAWN BY	C.A.K.	DATE	2/04
CHECKED BY	T.P.K.	DATE	2/04
DESIGN FILE NO. NYTSDI-FLASH.DGN			
PROJ. NAME	BENNINGTON - HOOSICK D.P.I. 0146(I) C/1		
PROJ. NO.	P.I.N. 1306.60		
SHEET	71 OF 92	DWG NO.	TSD-1