

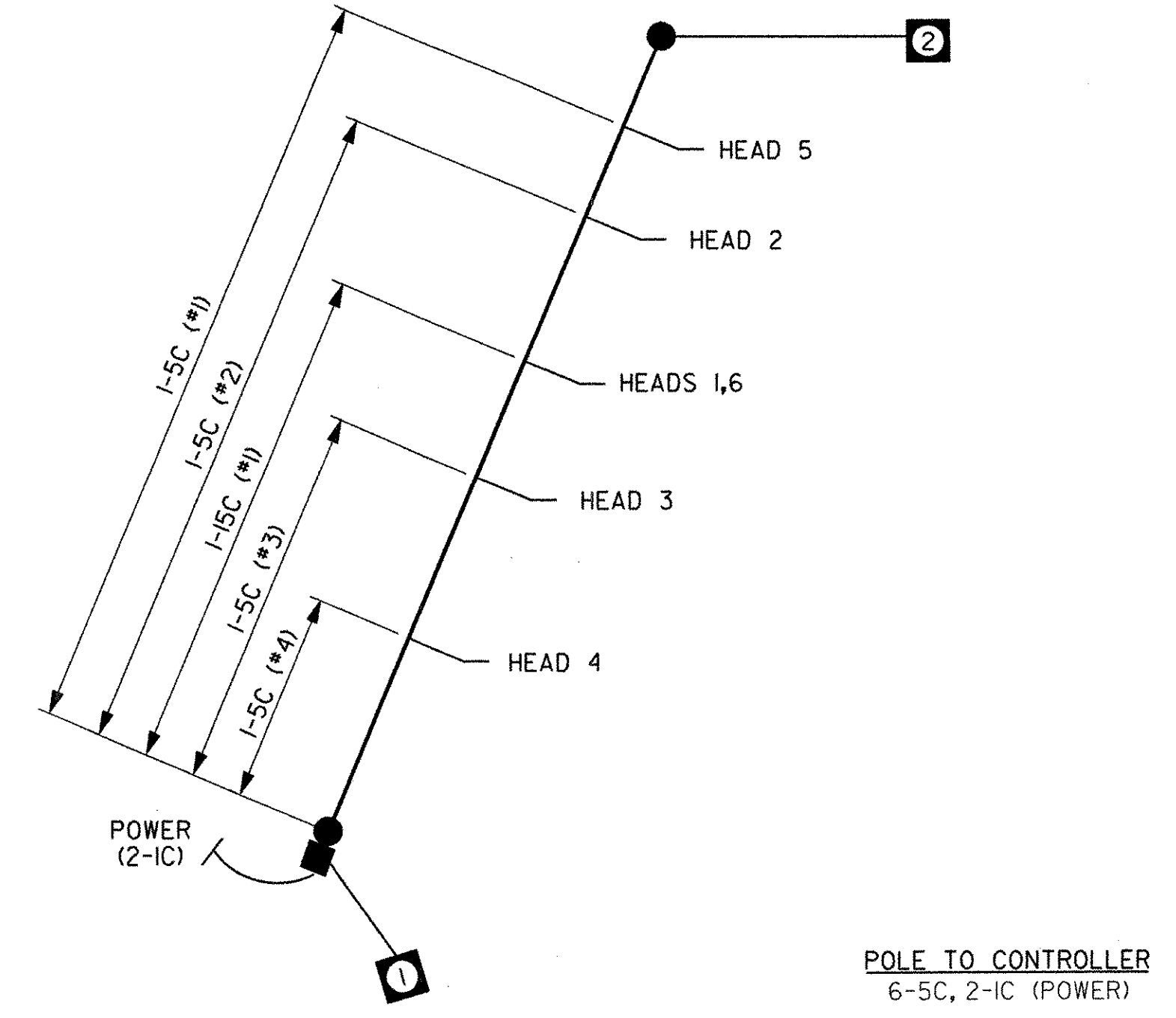
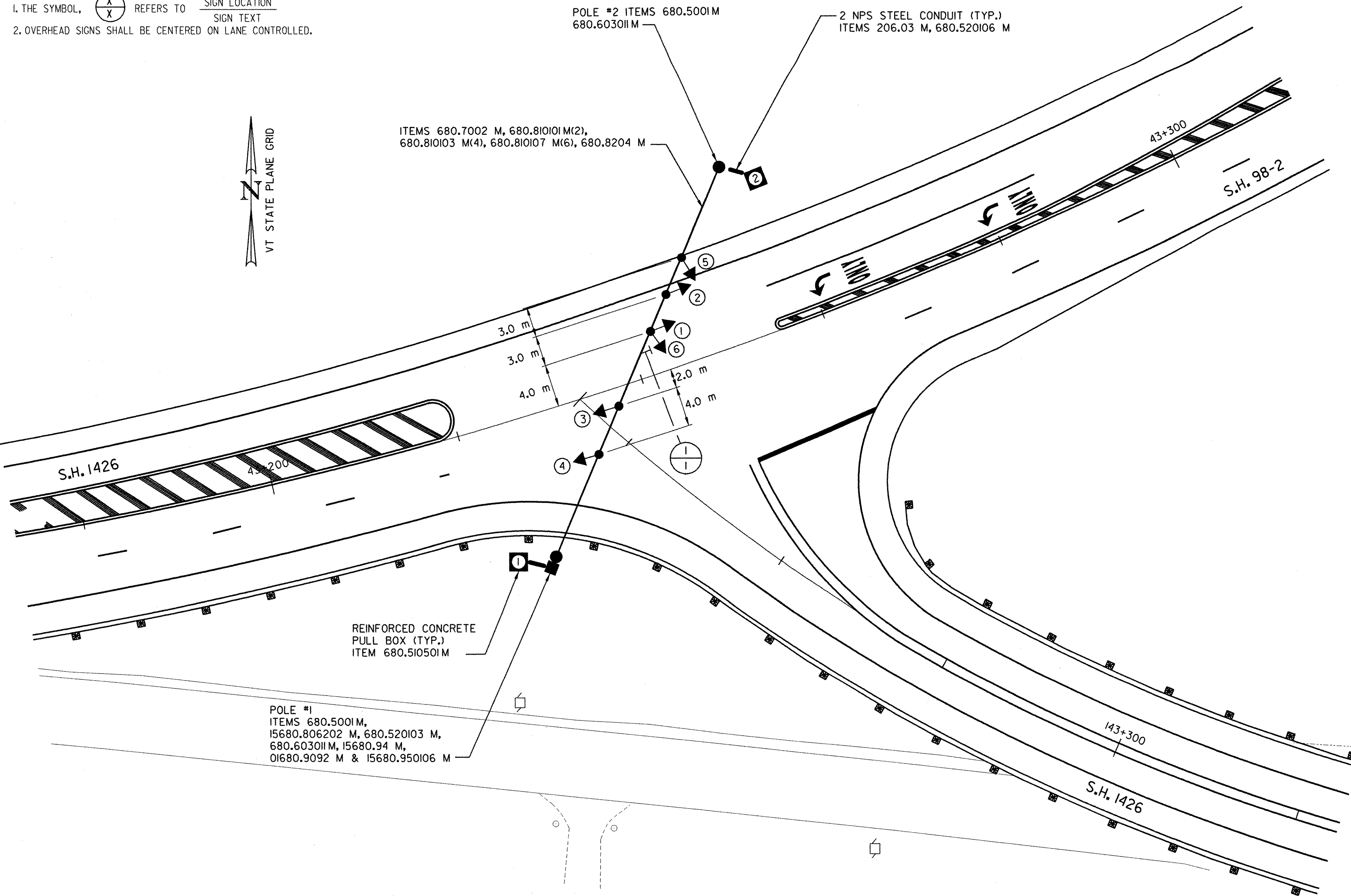
FILE NAME = s:\bids\contract\contract\vg\sig1-flash.dgn
 DATE/TIME = 2/23/2004 11:22:55
 IN CHARGE OF T. KARIS
 DESIGNED BY C. PRISK
 CHECKED BY M. WIESZCHOWSKI
 ESTIMATED BY C. PRISK
 CHECKED BY C. KAHLBAUGH
 DRAFTED BY M. WIESZCHOWSKI
 CHECKED BY I. BURTNICK
 DATE 2/04



FED. ROAD REG. NO.	STATE	FEDERAL AID PROJECT NO.	SHEET NO.	TOTAL SHEETS
1	N.Y.	0146001	70	92
BENNINGTON CONNECTOR		S.H. 98-2		
P.I.N. 1306.60				
WHITEHOUSE BRIDGE - VERMONT STATE LINE			S.H. 1426	
RENSSELAER COUNTY				

SIGNS TO BE INSTALLED						
ITEM NO.	TEXT NO.	LOCATION NO.	TEXT	MUTCD NO.	APPROX. SIZE OF SIGN	TYPE OF MOUNT
680.8204 M	1	1		R3-22C	762 mm x 914 mm	SPAN WIRE

NOTES:
 1. THE SYMBOL, REFERS TO SIGN LOCATION
 SIGN TEXT
 2. OVERHEAD SIGNS SHALL BE CENTERED ON LANE CONTROLLED.

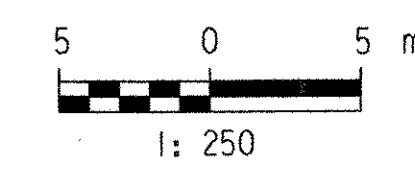


WIRING DIAGRAM (N.T.S.)

POLE TO CONTROLLER
6-5C, 2-1C (POWER)

POLE NUMBER	LOCATION	LENGTH	DESIGN LOAD	FOOTING MOMENT
1	43+226.2, 14.8 m RT.	11m	30 KN	316.5 KN-m
2	43+255.2, 18.1 m LT.	11m	30 KN	316.5 KN-m

PHASE	FACES					
	1	2	3	4	5	6
FLASHING OPERATION	FY	FY	FY	FY	FR	FR
DISPLAY						
ALL LENSES SHALL BE 300 mm DIA. LED	(Y)	(Y)	(Y)	(Y)	(R)	(R)



TRAFFIC SIGNAL PLAN

SURVEYED BY C.H.A. & V.S.E. DATE 12/93
 DESIGNED BY C.A.P. DATE 2/04
 DRAWN BY C.A.K. DATE 2/04
 CHECKED BY M.R.W. DATE 2/04
 DESIGN FILE NO. NYTSP1-FLASH.DGN
 PROJ. NAME BENNINGTON - HOOSICK
 D.P.I. 0146(1) C/1
 PROJ. NO. P.I.N. 1306.60
 SHEET 70 OF 92 DWG NO. TSP-1

DATUM
 VERTICAL NAVD 88
 HORIZONTAL NAD 83 (1992)