

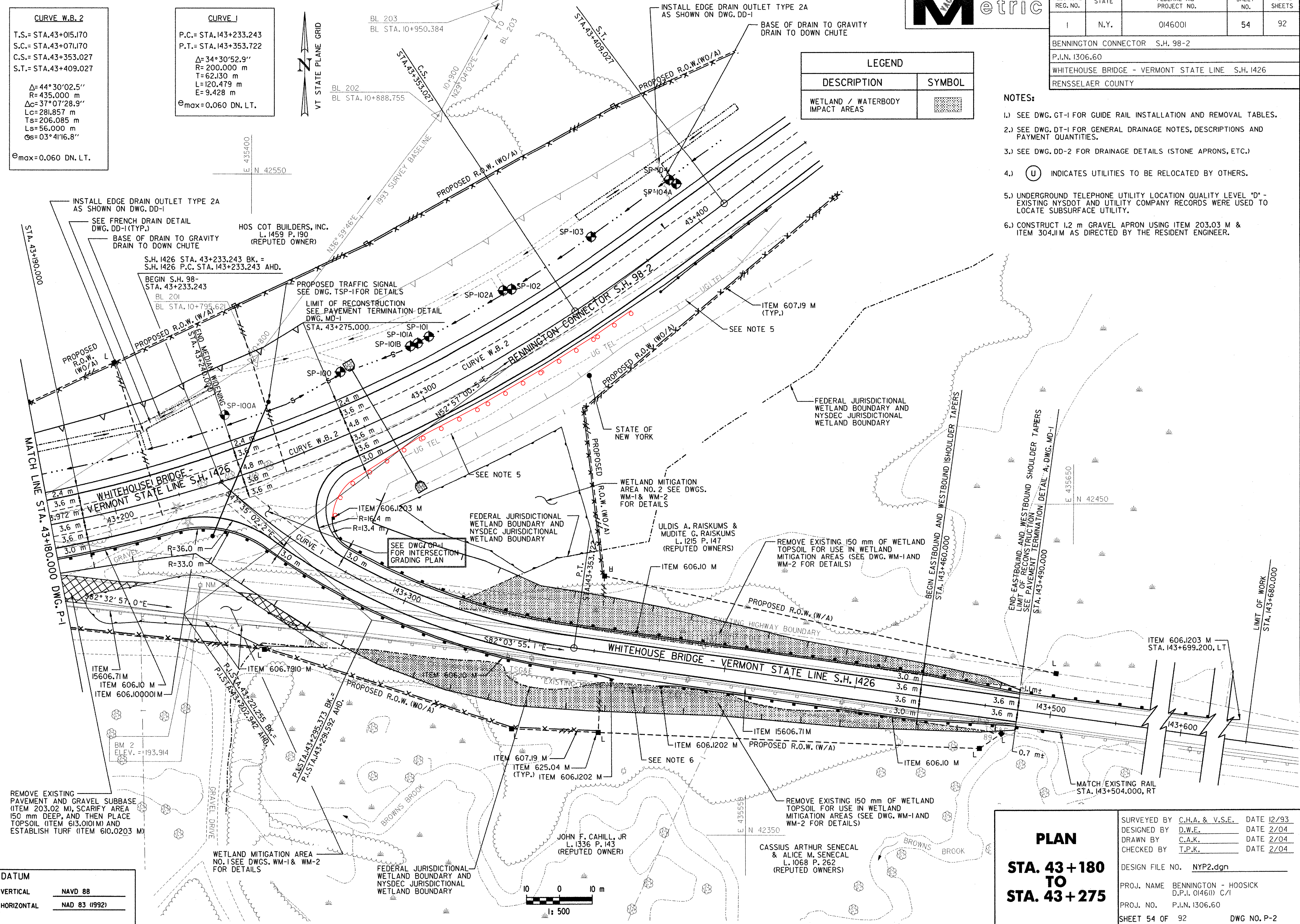


FED. ROAD REG. NO.	STATE	FEDERAL AID PROJECT NO.	SHEET NO.	TOTAL SHEETS
1	N.Y.	0146001	54	92
BENNINGTON CONNECTOR S.H. 98-2				
P.I.N. 1306.60				
WHITEHOUSE BRIDGE - VERMONT STATE LINE S.H. 1426				
RENSSELAER COUNTY				

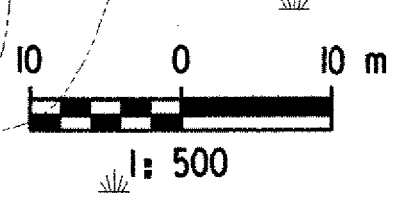
LEGEND	
DESCRIPTION	SYMBOL
WETLAND / WATERBODY IMPACT AREAS	

- NOTES:
- 1.) SEE DWG. GT-1 FOR GUIDE RAIL INSTALLATION AND REMOVAL TABLES.
 - 2.) SEE DWG. DT-1 FOR GENERAL DRAINAGE NOTES, DESCRIPTIONS AND PAYMENT QUANTITIES.
 - 3.) SEE DWG. DD-2 FOR DRAINAGE DETAILS (STONE APRONS, ETC.)
 - 4.) (U) INDICATES UTILITIES TO BE RELOCATED BY OTHERS.
 - 5.) UNDERGROUND TELEPHONE UTILITY LOCATION QUALITY LEVEL "D" - EXISTING NYS DOT AND UTILITY COMPANY RECORDS WERE USED TO LOCATE SUBSURFACE UTILITY.
 - 6.) CONSTRUCT 1.2 m GRAVEL APRON USING ITEM 203.03 M & ITEM 304.11 M AS DIRECTED BY THE RESIDENT ENGINEER.

<p>CURVE W.B. 2</p> <p>T.S.= STA.43+015.170 S.C.= STA.43+071.170 C.S.= STA.43+353.027 S.T.= STA.43+409.027</p> <p>$\Delta=44^{\circ}30'02.5''$ $R=435.000$ m $\Delta c=37^{\circ}07'28.9''$ $Lc=281.857$ m $Ts=206.085$ m $Ls=56.000$ m $\Theta s=03^{\circ}41'16.8''$</p> <p>$\Theta_{max}=0.060$ DN. LT.</p>	<p>CURVE J</p> <p>P.C.= STA.143+233.243 P.T.= STA.143+353.722</p> <p>$\Delta=34^{\circ}30'52.9''$ $R=200.000$ m $T=62.130$ m $L=120.479$ m $E=9.428$ m</p> <p>$\Theta_{max}=0.060$ DN. LT.</p>
--	--



DATUM	
VERTICAL	NAVD 88
HORIZONTAL	NAD 83 (1992)



PLAN
STA. 43+180 TO STA. 43+275

SURVEYED BY	C.H.A. & V.S.E.	DATE	12/93
DESIGNED BY	D.W.E.	DATE	2/04
DRAWN BY	C.A.K.	DATE	2/04
CHECKED BY	T.P.K.	DATE	2/04

DESIGN FILE NO. NYP2.dgn

PROJ. NAME BENNINGTON - HOOSICK
 D.P.I. 0146(1) C/1

PROJ. NO. P.I.N. 1306.60

SHEET 54 OF 92 DWG NO. P-2

FILE NAME = y:\3115\mads\contract\m2.dgn
 DATE/TIME = 2/22/04
 USER = 2225
 IN CHARGE OF I. KARIS
 DESIGNED BY D. EMERICH
 CHECKED BY D. EMERICH
 ESTIMATED BY D. GOZALKOWSKI
 DRAFTED BY C. KAHLBAUGH
 CHECKED BY I. BURTRICK
 DATE 2/04