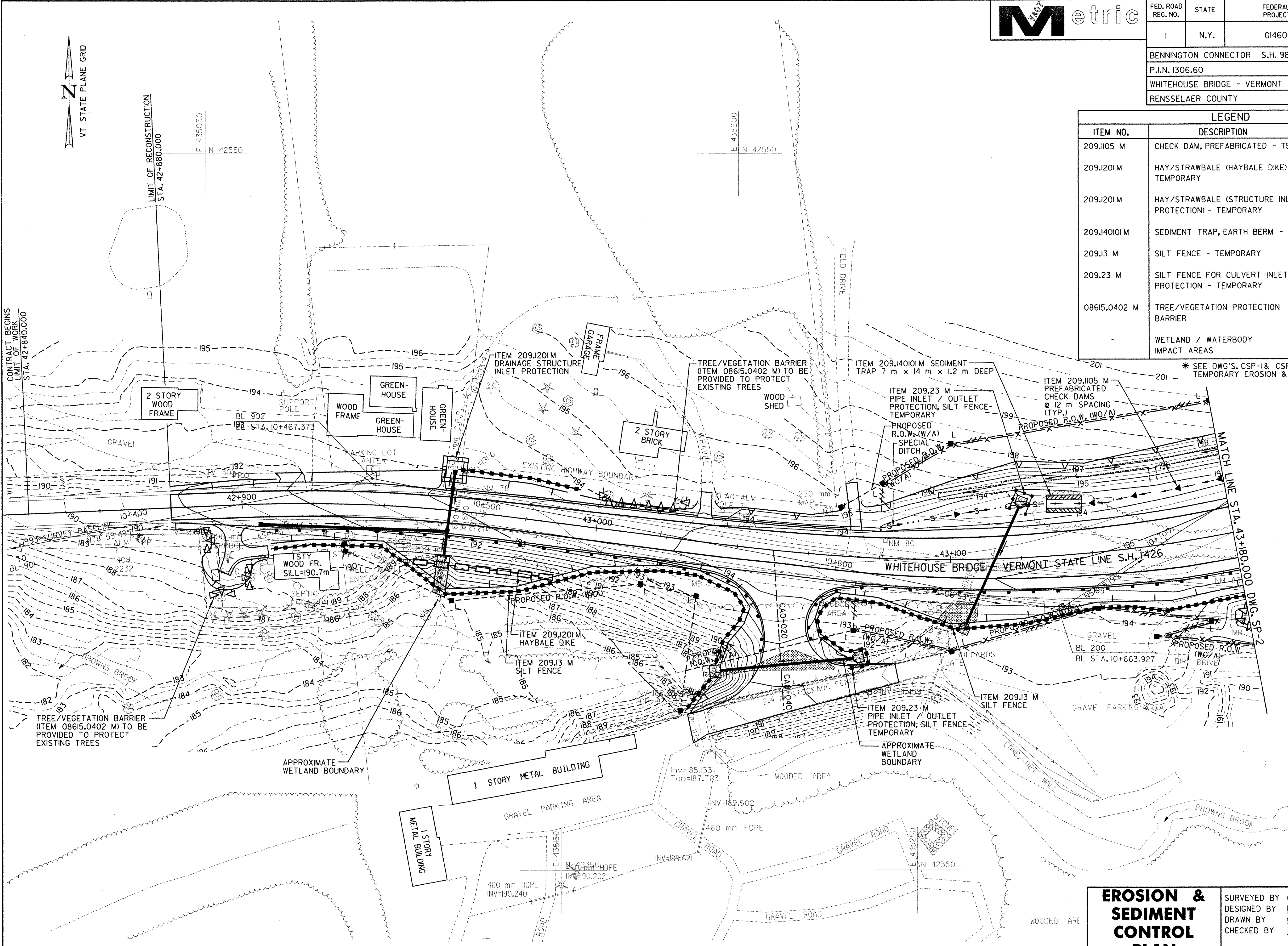




FED. ROAD REG. NO.	STATE	FEDERAL AID PROJECT NO.	SHEET NO.	TOTAL SHEETS
1	N.Y.	0146001	48	92
BENNINGTON CONNECTOR		S.H. 98-2		
P.I.N. 1306.60				
WHITEHOUSE BRIDGE - VERMONT STATE LINE		S.H. 1426		
RENSSELAER COUNTY				

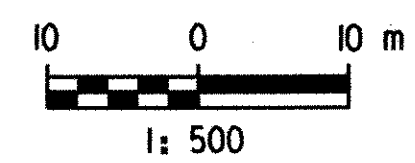
LEGEND		
ITEM NO.	DESCRIPTION	SYMBOL
209.1105 M	CHECK DAM, PREFABRICATED - TEMPORARY	
209.1201 M	HAY/STRAWBALE (HAYBALE DIKE) - TEMPORARY	
209.1201 M	HAY/STRAWBALE (STRUCTURE INLET PROTECTION) - TEMPORARY	
209.140101 M	SEDIMENT TRAP, EARTH BERM - TEMPORARY	
209.13 M	SILT FENCE - TEMPORARY	
209.23 M	SILT FENCE FOR CULVERT INLET PROTECTION - TEMPORARY	
08615.0402 M	TREE/VEGETATION PROTECTION BARRIER	
-	WETLAND / WATERBODY IMPACT AREAS	

* SEE DWG'S CSP-1 & CSP-2 FOR STAGING OF TEMPORARY EROSION & SEDIMENT CONTROLS



FILE NAME = J:\SUSANSDOT\CONTRACT\engpl1.dgn
 DATE/TIME = 2/24/2004
 USER = 2225
 IN CHARGE OF T. KARIS
 DESIGNED BY D. EMERICH
 CHECKED BY D. EMERICH
 ESTIMATED BY D. EMERICH
 CHECKED BY D. GOZALKOWSKI
 DRAFTED BY C. KAHLBAUGH
 CHECKED BY J. BURTNICK
 DATE 2/04

DATUM	
VERTICAL	NAVD 88
HORIZONTAL	NAD 83 (1992)



EROSION & SEDIMENT CONTROL PLAN STA. 42 + 840 TO STA. 43 + 180	SURVEYED BY	C.H.A. & V.S.E.	DATE	12/93
	DESIGNED BY	D.W.E.	DATE	2/04
	DRAWN BY	C.A.K.	DATE	2/04
	CHECKED BY	T.P.K.	DATE	2/04
DESIGN FILE NO.		NYSPLDCN		
PROJ. NAME	BENNINGTON - HOOSICK D.P.I. 0146(I) C/1			
PROJ. NO.	P.I.N. 1306.60			
SHEET	48 OF 92	DWG NO.		SP-1