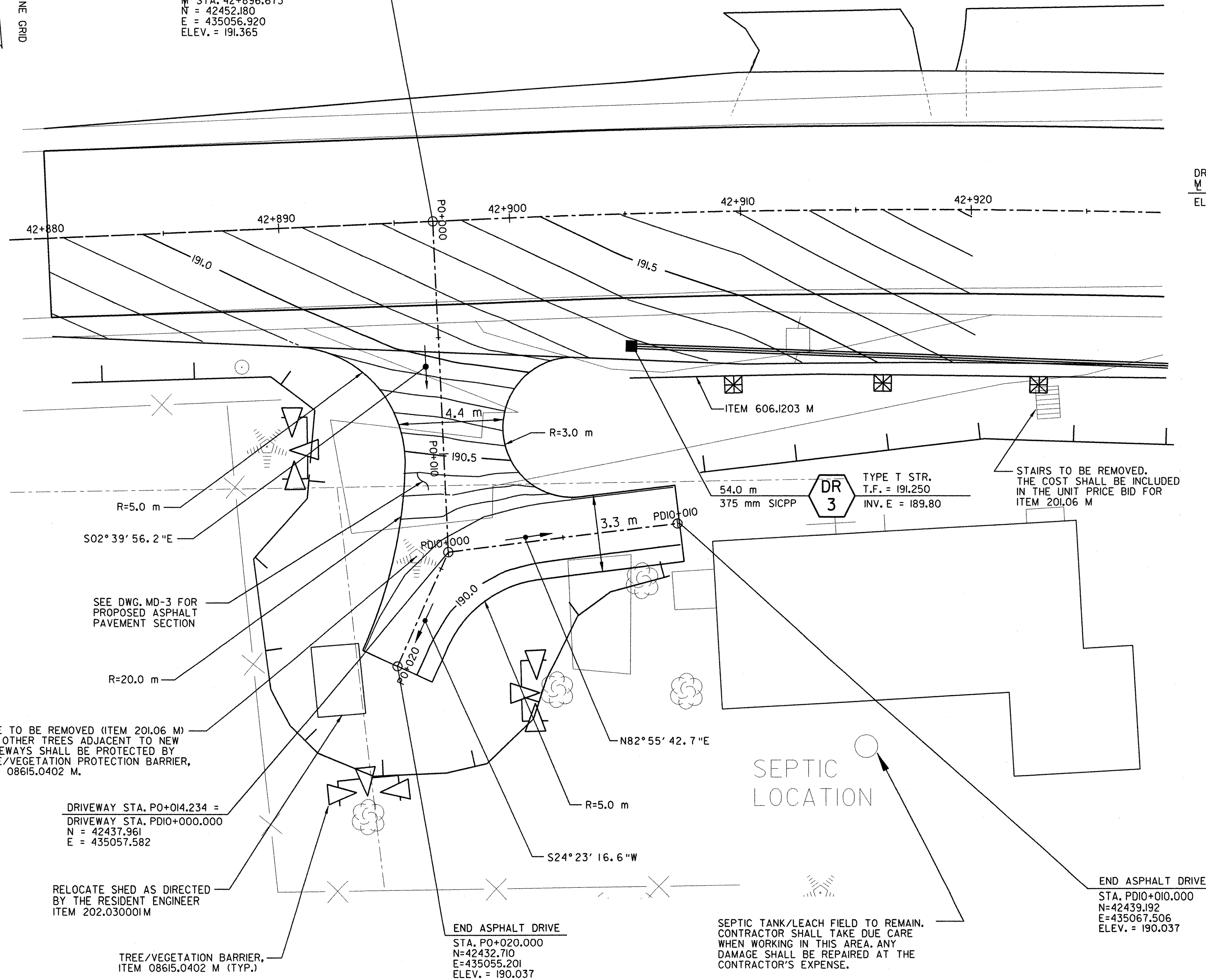


FED. ROAD REG. NO.	STATE	FEDERAL AID PROJECT NO.	SHEET NO.	TOTAL SHEETS
1	N.Y.	0146001	36	92
BENNINGTON CONNECTOR S.H. 98-2				
P.I.N. 1306.60				
WHITEHOUSE BRIDGE - VERMONT STATE LINE S.H. 1426				
RENSELAER COUNTY				

FILE NAME = \\s101\cadd\contract\vgdr-1.dgn
 DATE/TIME = 2/23/2004 2:25
 IN CHARGE OF T. KARISS
 DESIGNED BY D. EMERICH
 CHECKED BY D. EMERICH
 ESTIMATED BY D. EMERICH
 DRAFTED BY D. GOZALKOWSKI
 CHECKED BY C. KAHLBAUGH
 DATE 2/04
 CHECKED BY I. BURTNICK



DRIVEWAY STA. PO+000.000 =
 M STA. 42+896.673
 N = 42452.180
 E = 435056.920
 ELEV. = 191.365

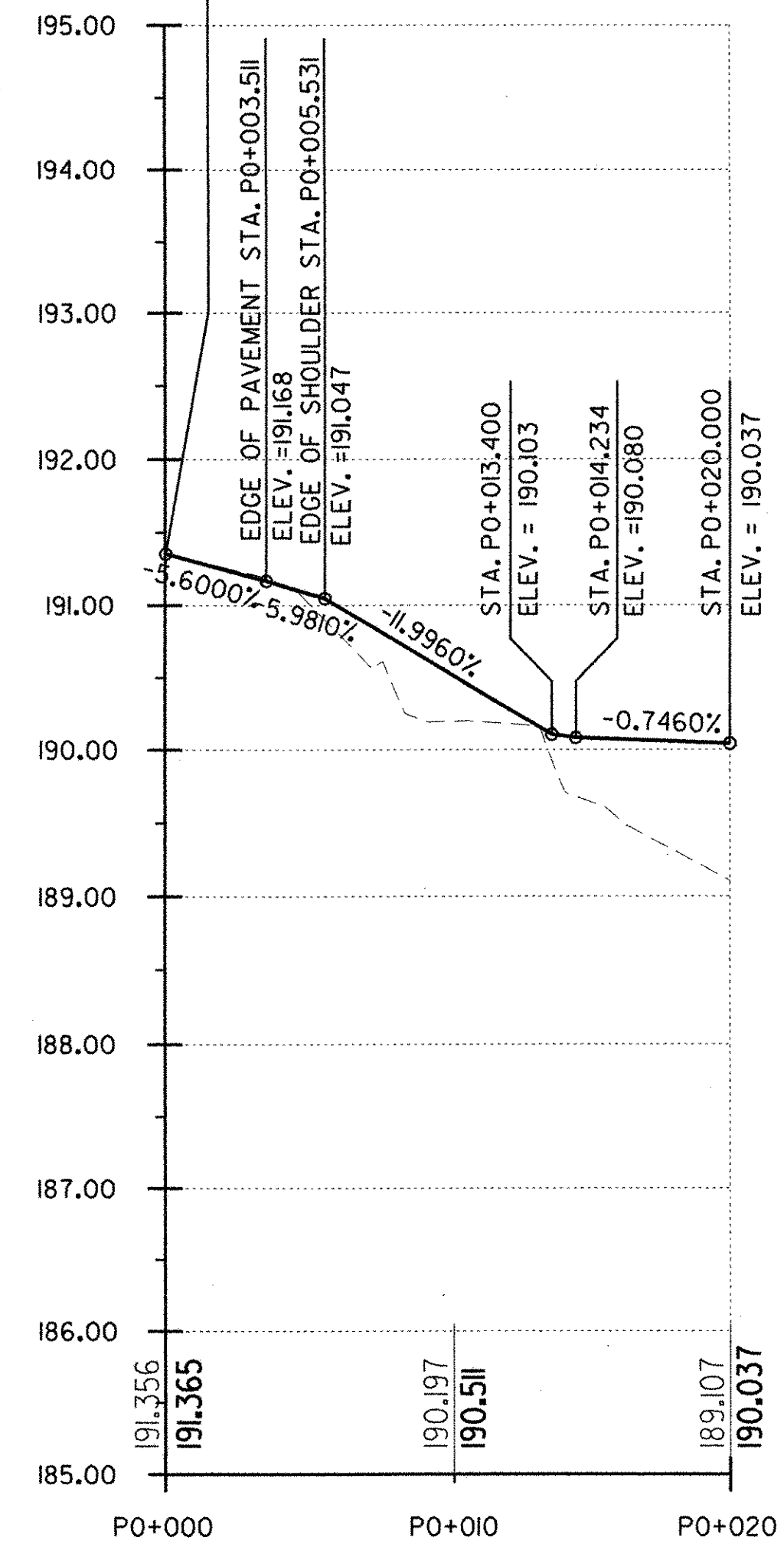


PLAN
 1:100
DRIVEWAY 4

NOTE: SEE DWGS. P-1 & MD-3 FOR ADDITIONAL SITE INFORMATION

DATUM	
VERTICAL	NAVD 88
HORIZONTAL	NAD 83 (1992)

DRIVEWAY STA. PO+000.000 =
 M STA. 42+896.673
 ELEV. = 191.365



PROFILE
 HORZ. = 1:200
 VERT. = 1:40
DRIVEWAY 4

DRIVEWAY PLANS

SURVEYED BY	C.H.A. & V.S.E.	DATE	12/93
DESIGNED BY	D.W.E.	DATE	2/04
DRAWN BY	C.A.K.	DATE	2/04
CHECKED BY	T.P.K.	DATE	2/04
DESIGN FILE NO.	NYDW-LDGN		
PROJ. NAME	BENNINGTON - HOOSICK D.P.I. 0146(1) C/1		
PROJ. NO.	P.I.N. 1306.60		
SHEET	36 OF 92	DWG NO.	DW-1