

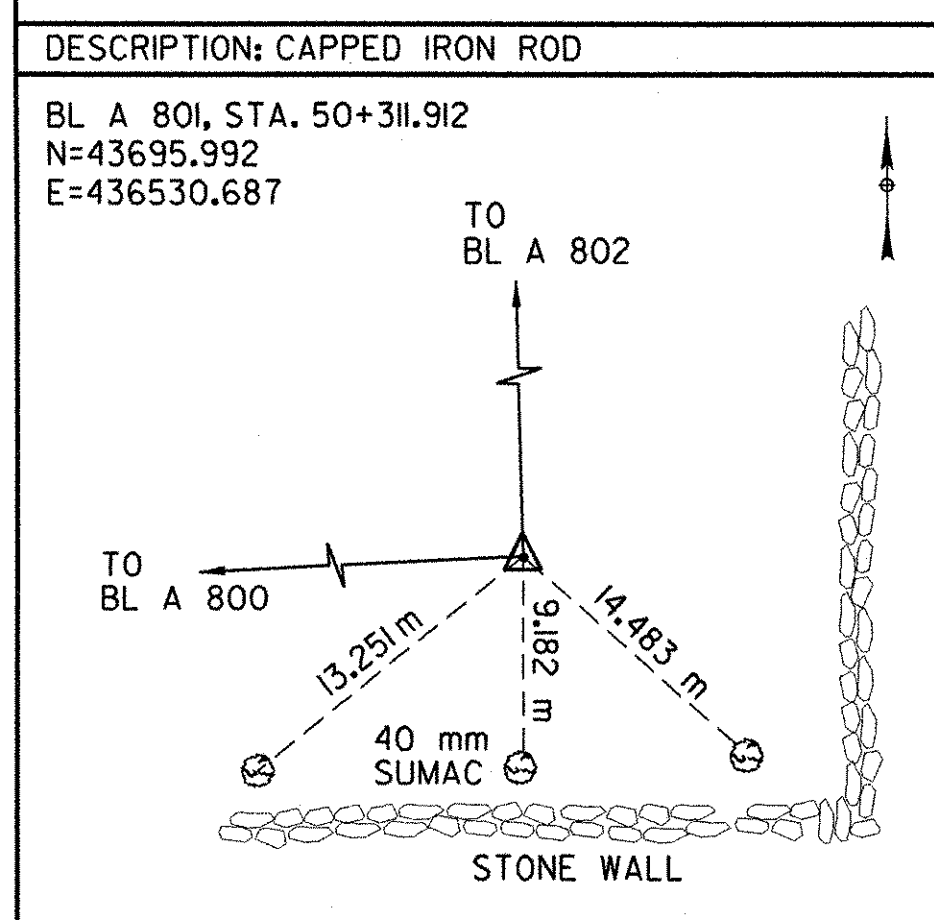
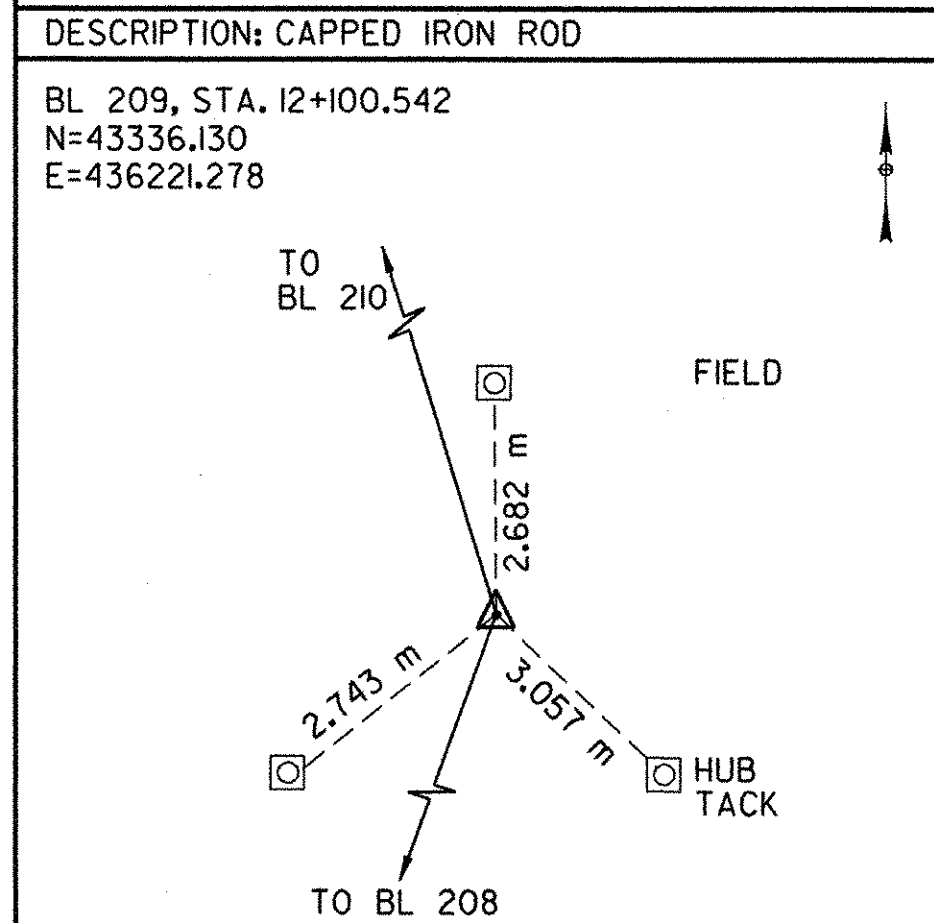
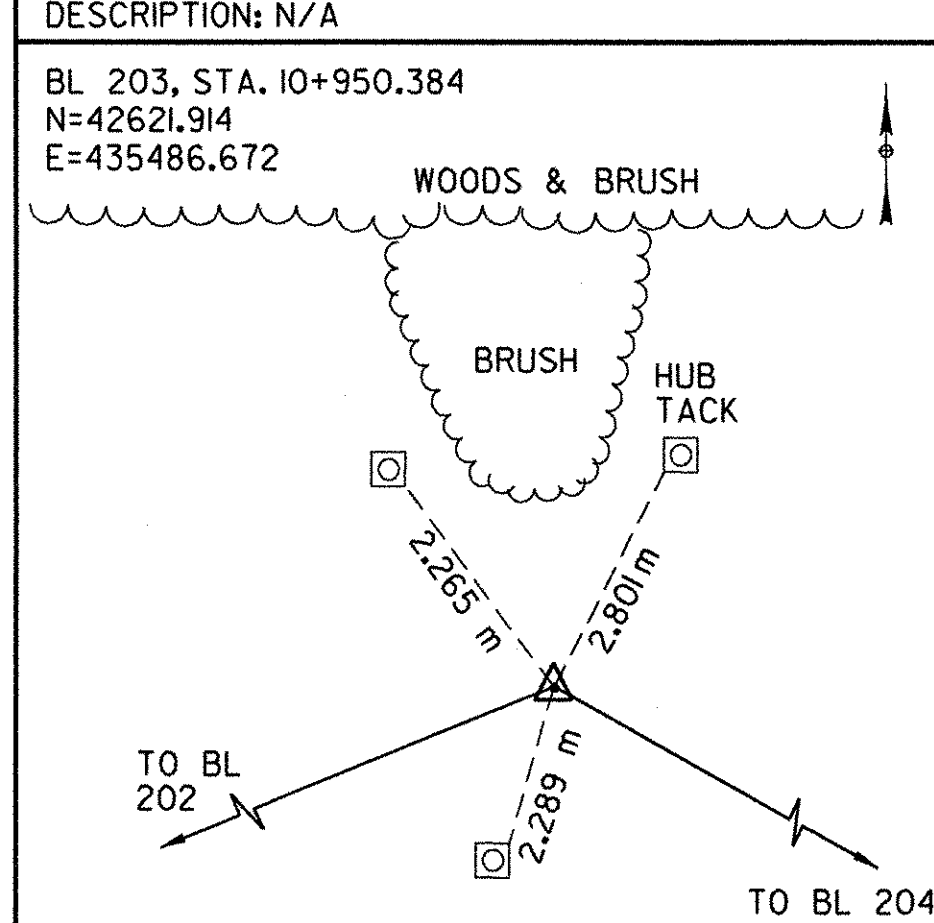
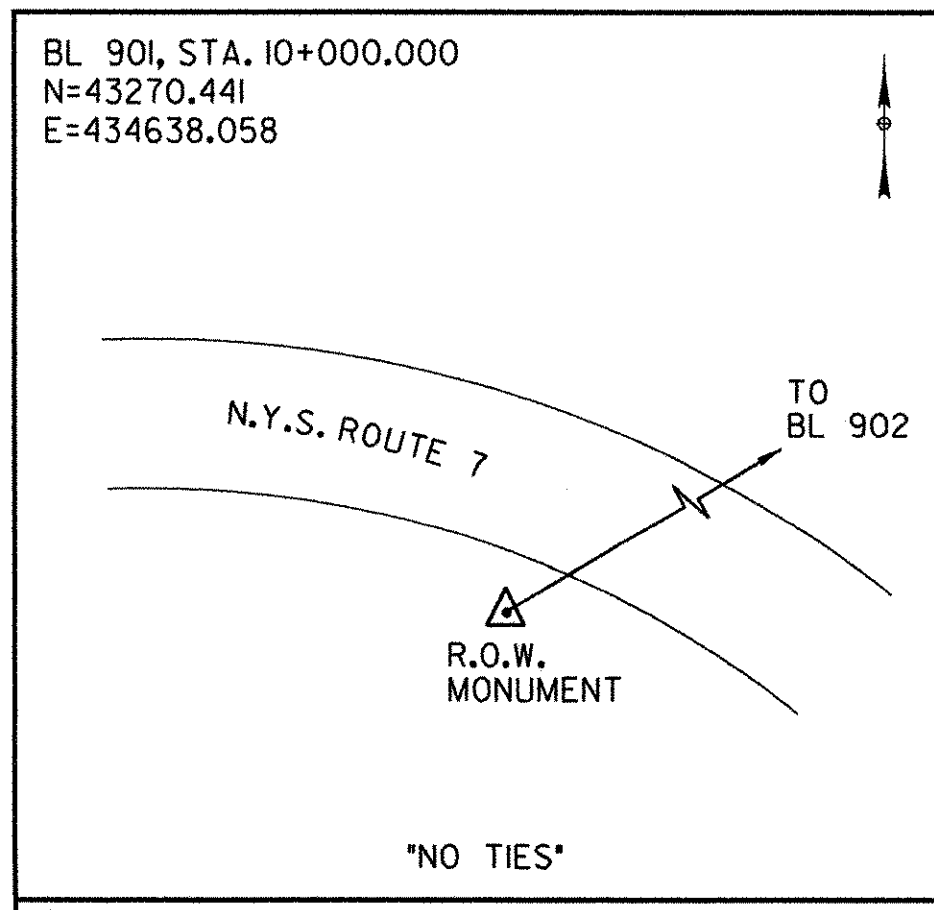
BASELINE TIES



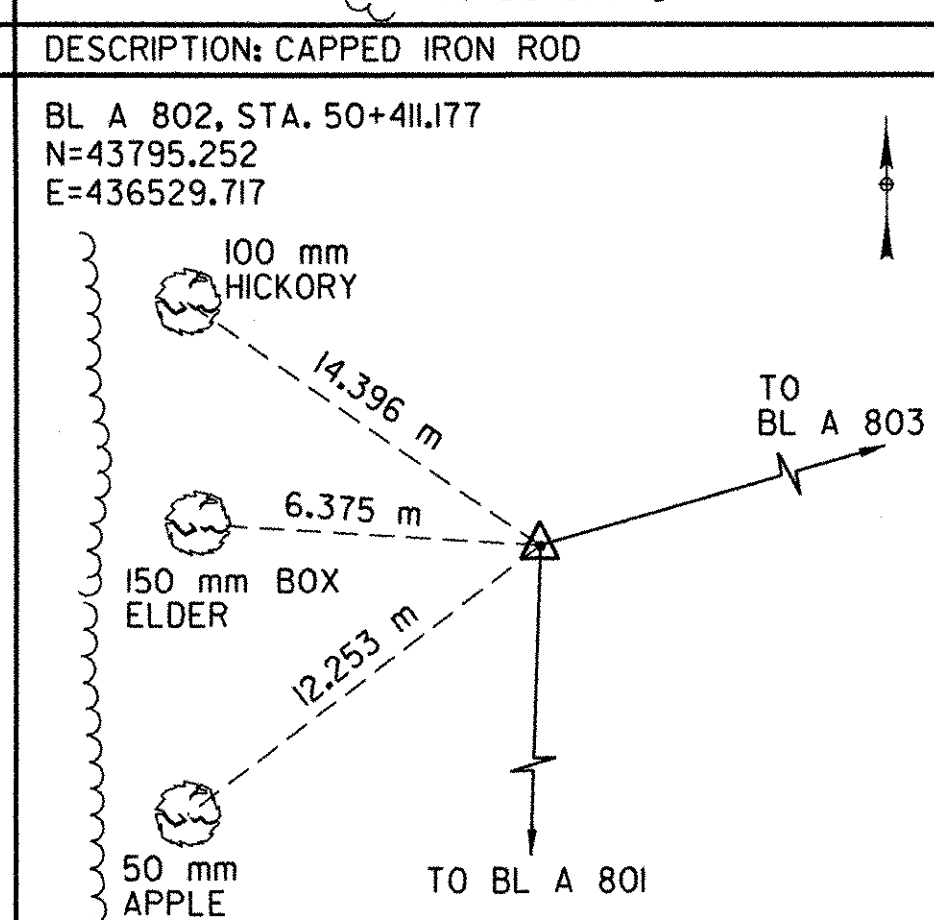
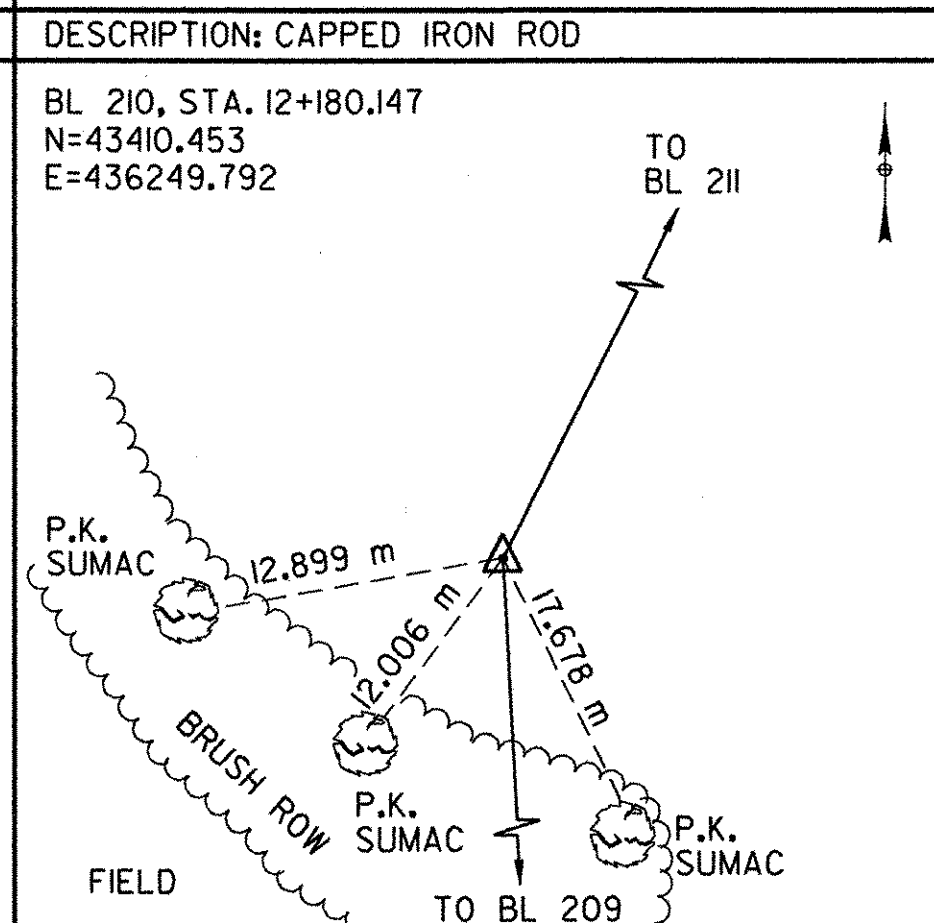
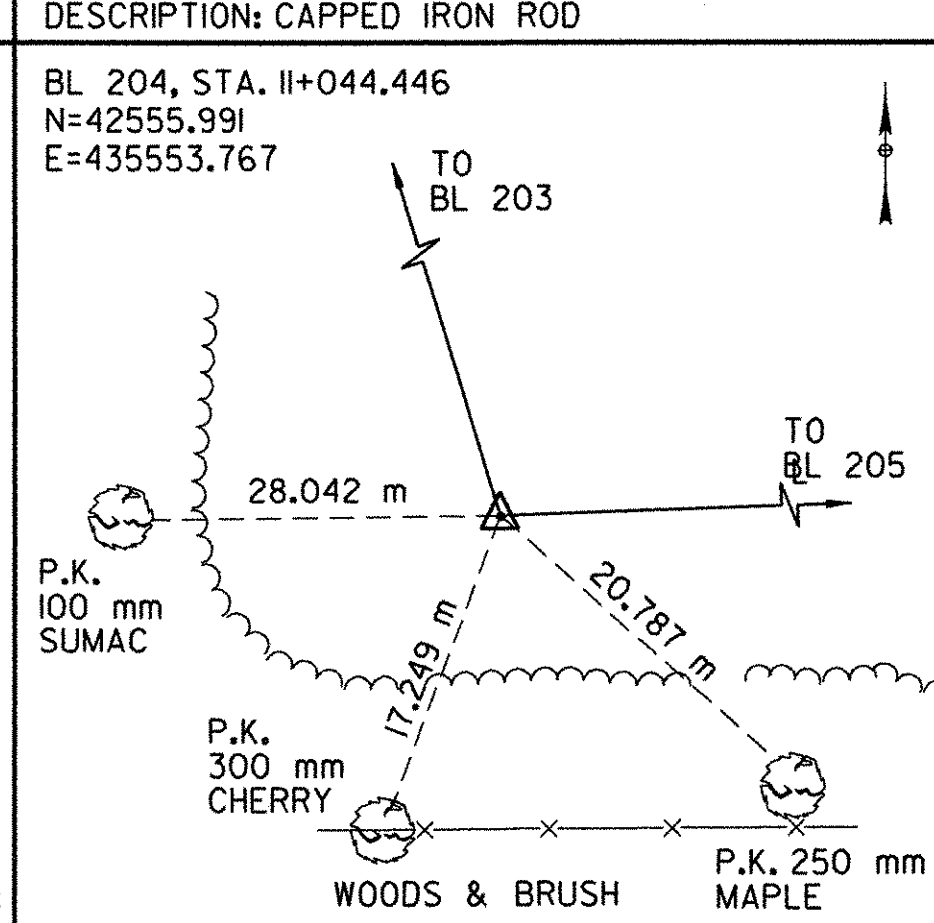
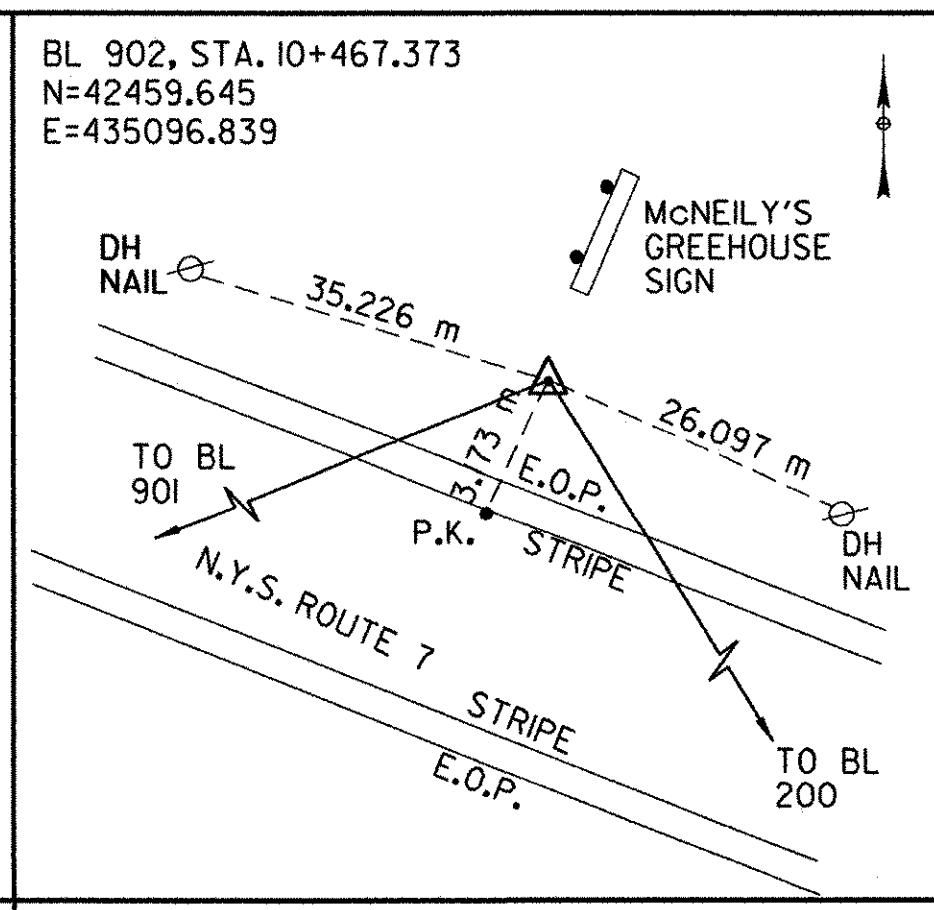
FED. ROAD REG. NO.	STATE	FEDERAL AID PROJECT NO.	SHEET NO.	TOTAL SHEETS
I	N.Y.	0146001	32	92

BENNINGTON CONNECTOR S.H. 98-2
 P.I.N. 1306.60
 WHITEHOUSE BRIDGE - VERMONT STATE LINE S.H. 1426
 RENSSELAER COUNTY

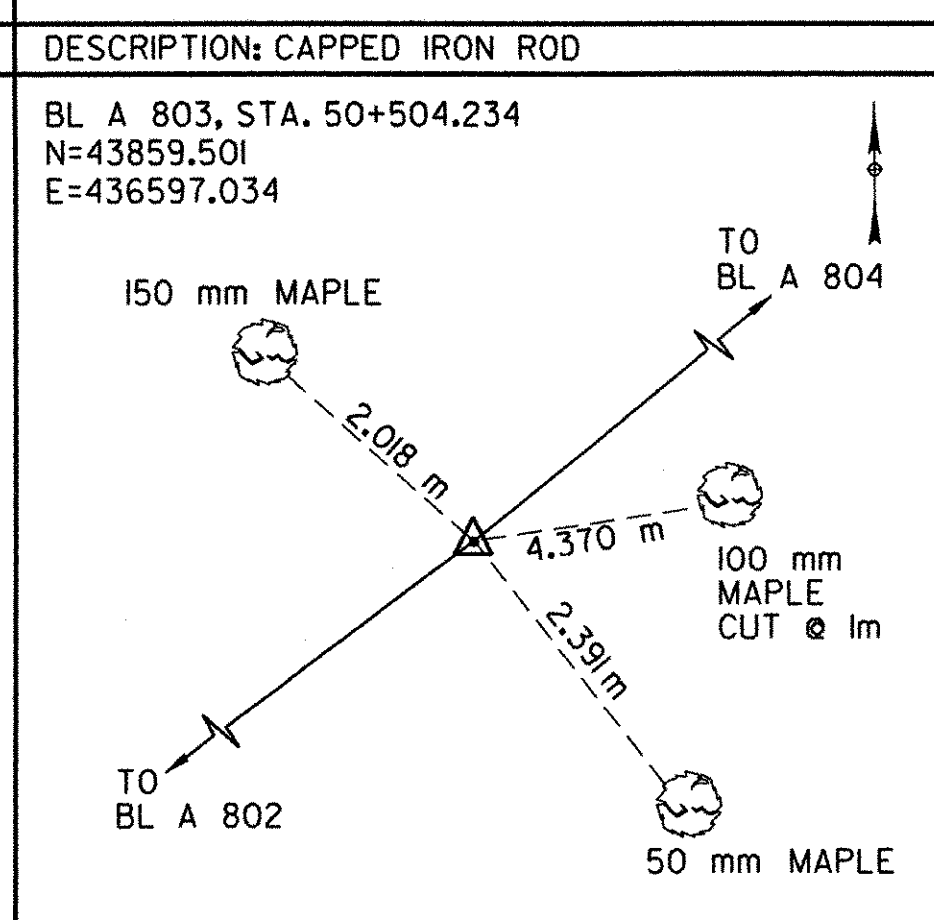
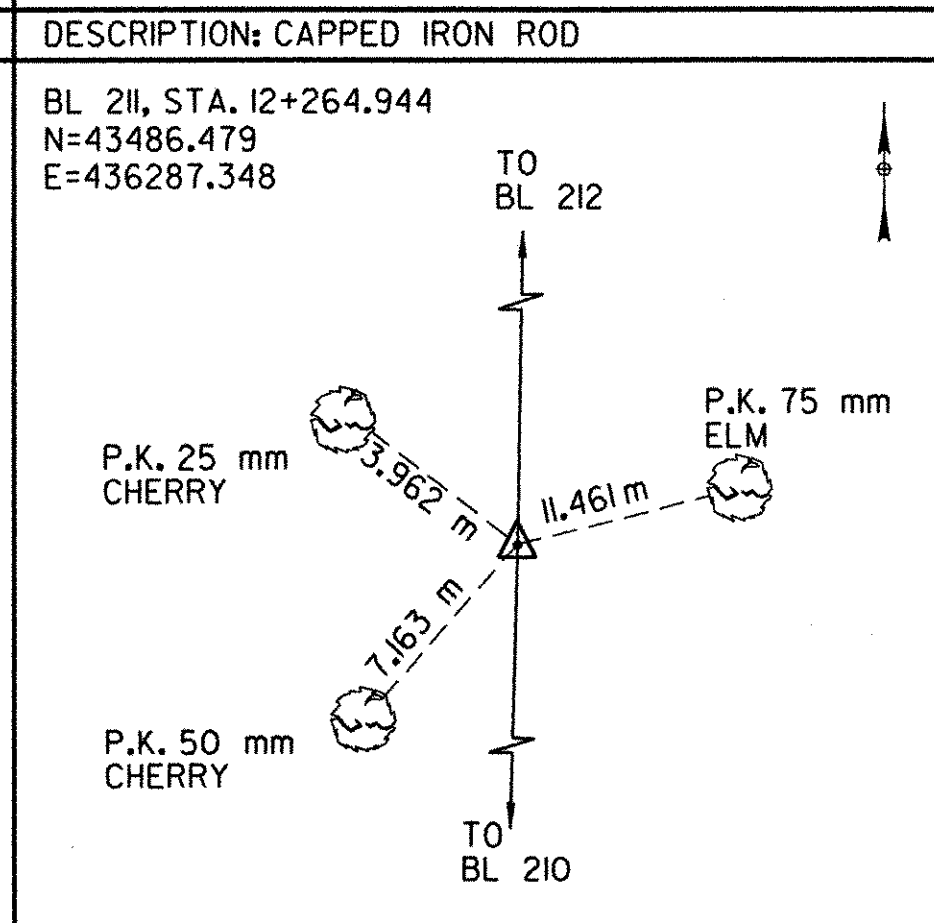
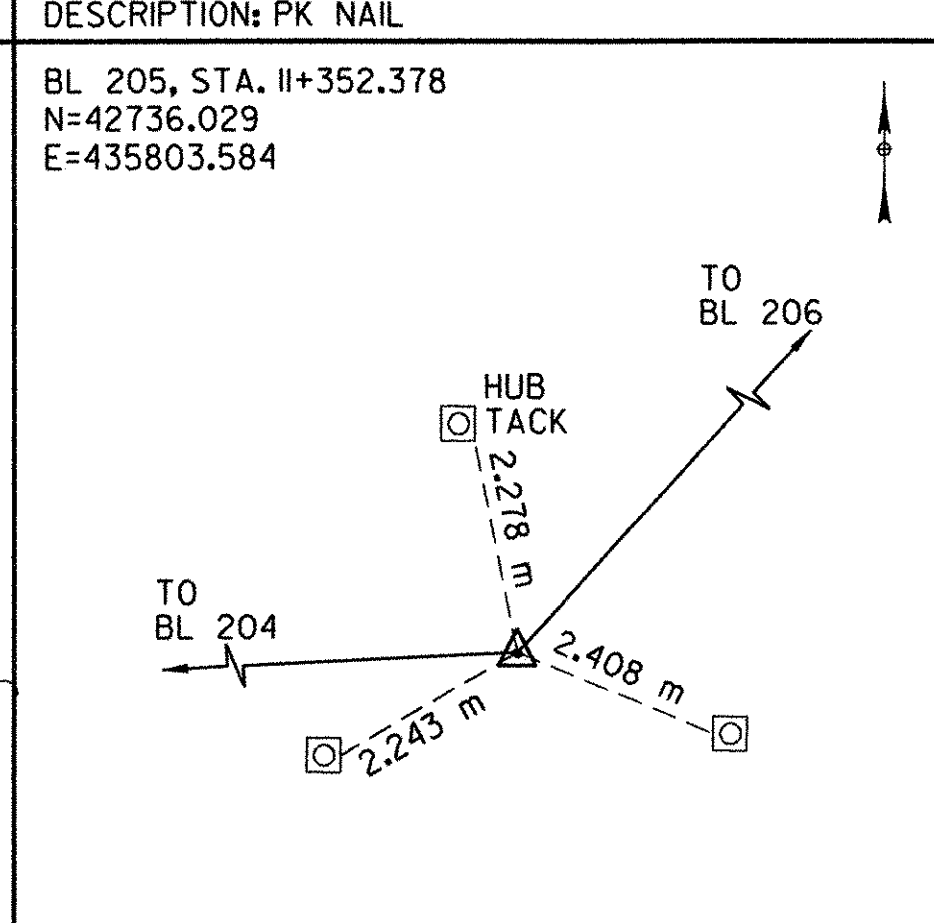
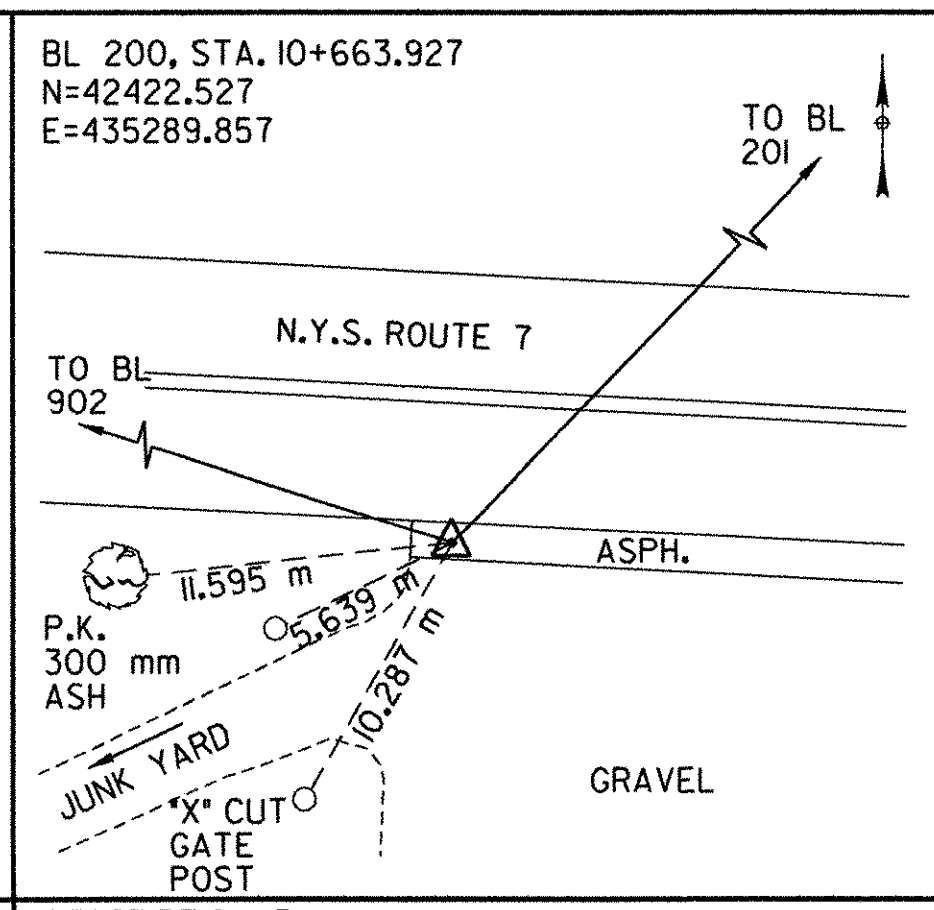
FILE NAME: s:\3115\plans\construct\hgt\hgt.txd
 USER: 2225
 DATE: 2/04
 CHECKED BY: J. BURTRICK
 DRAFTED BY: D. GOZALKOWSKI
 ESTIMATED BY: D. EMERICH
 DESIGNED BY: D. EMERICH
 IN CHARGE OF: T. KARIS



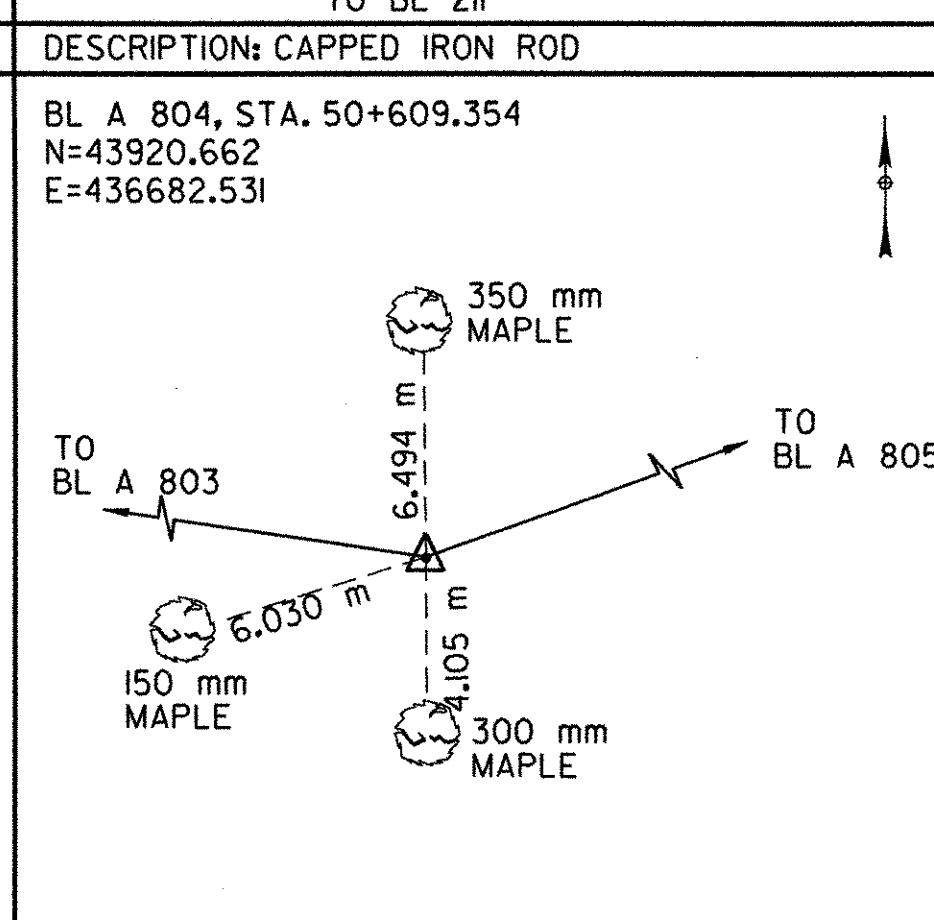
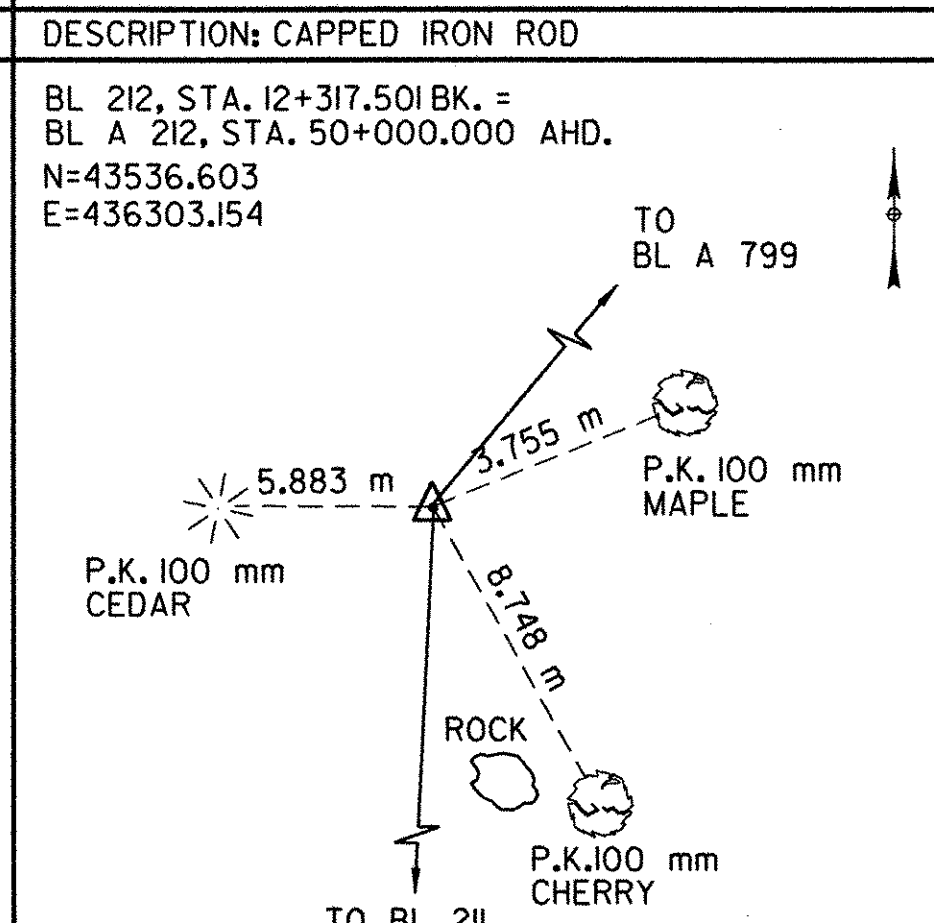
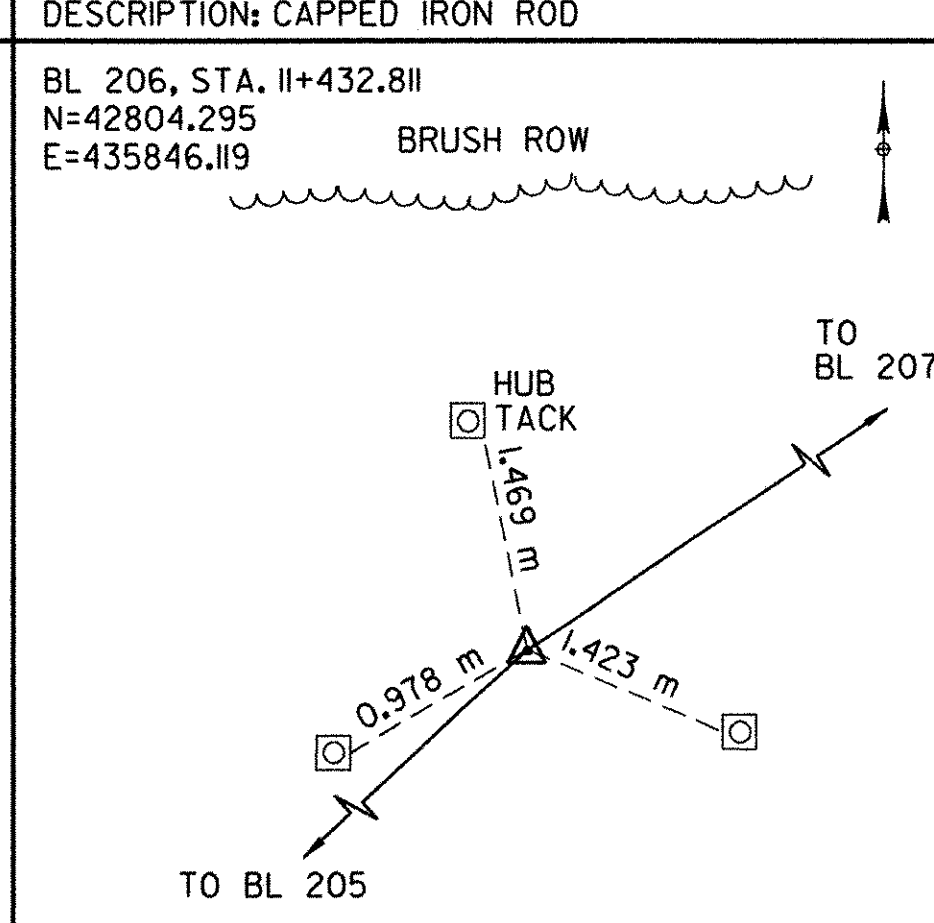
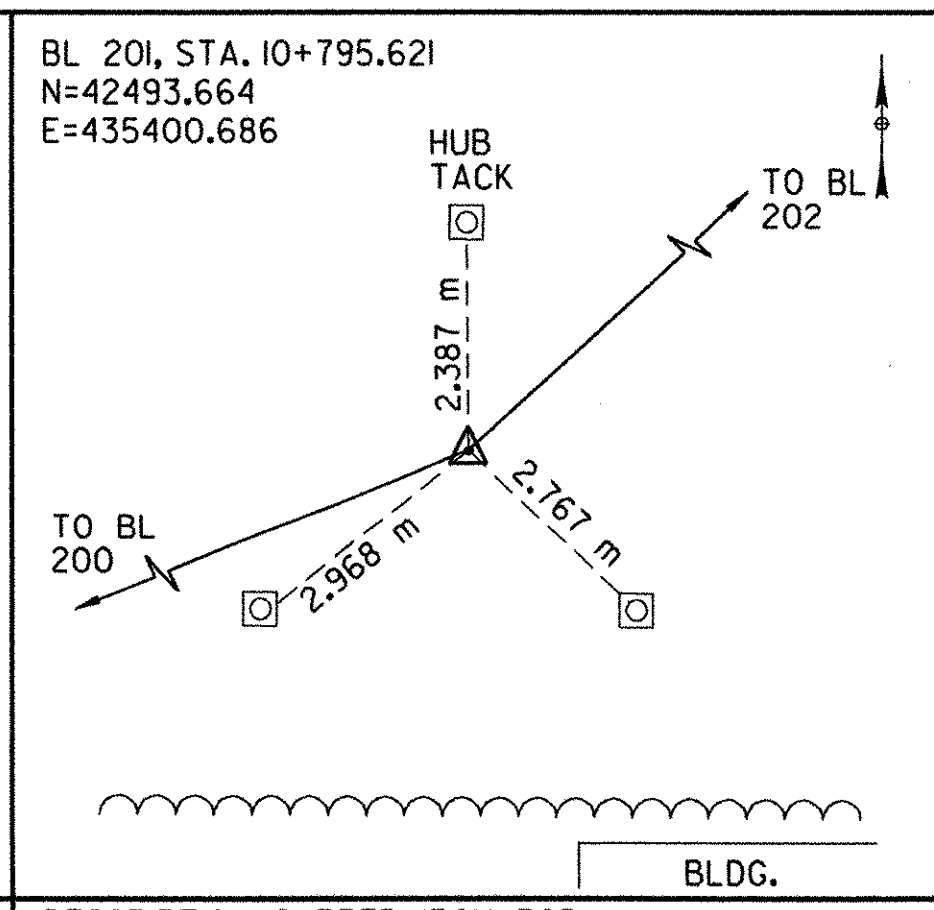
DESCRIPTION: CAPPED IRON ROD



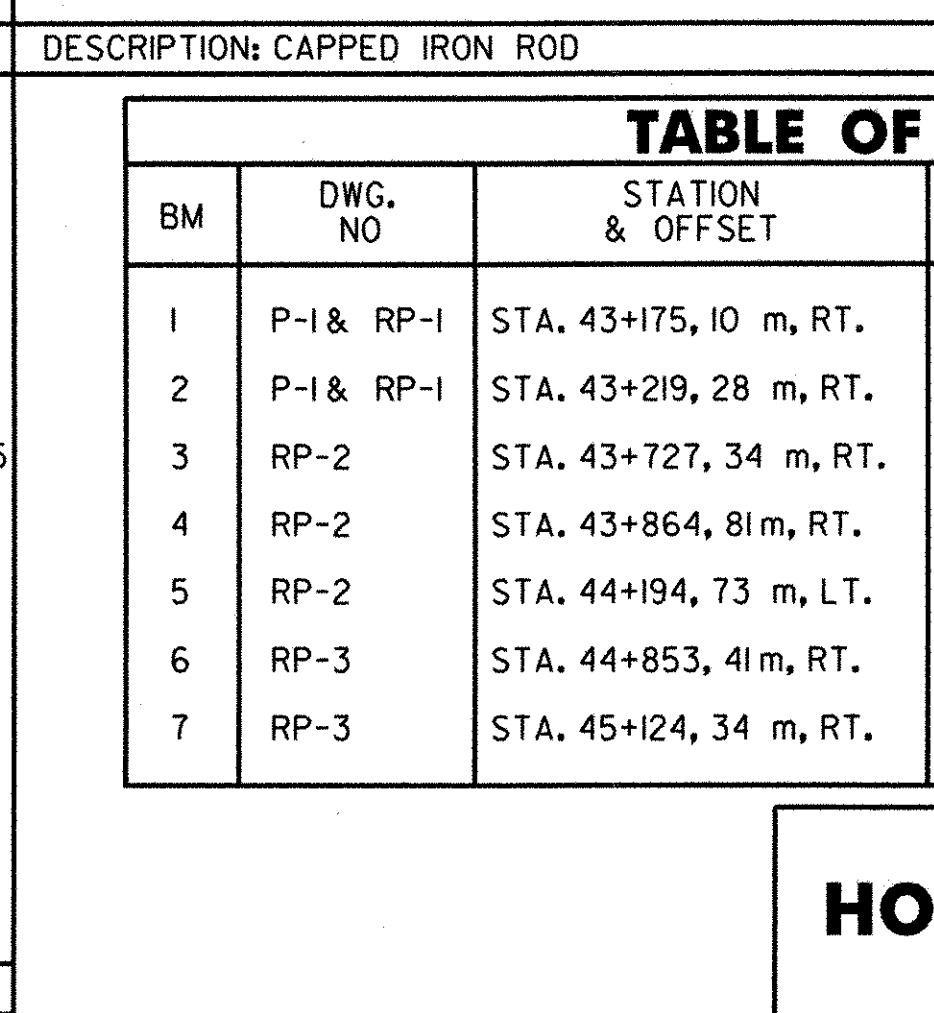
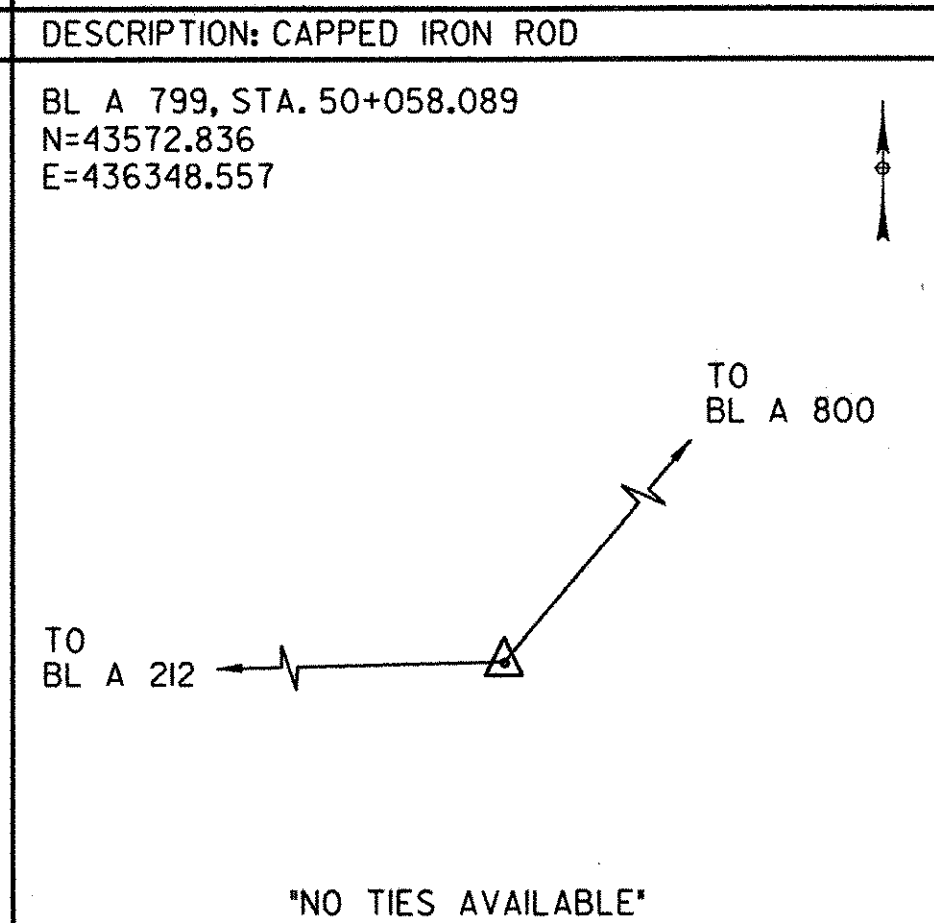
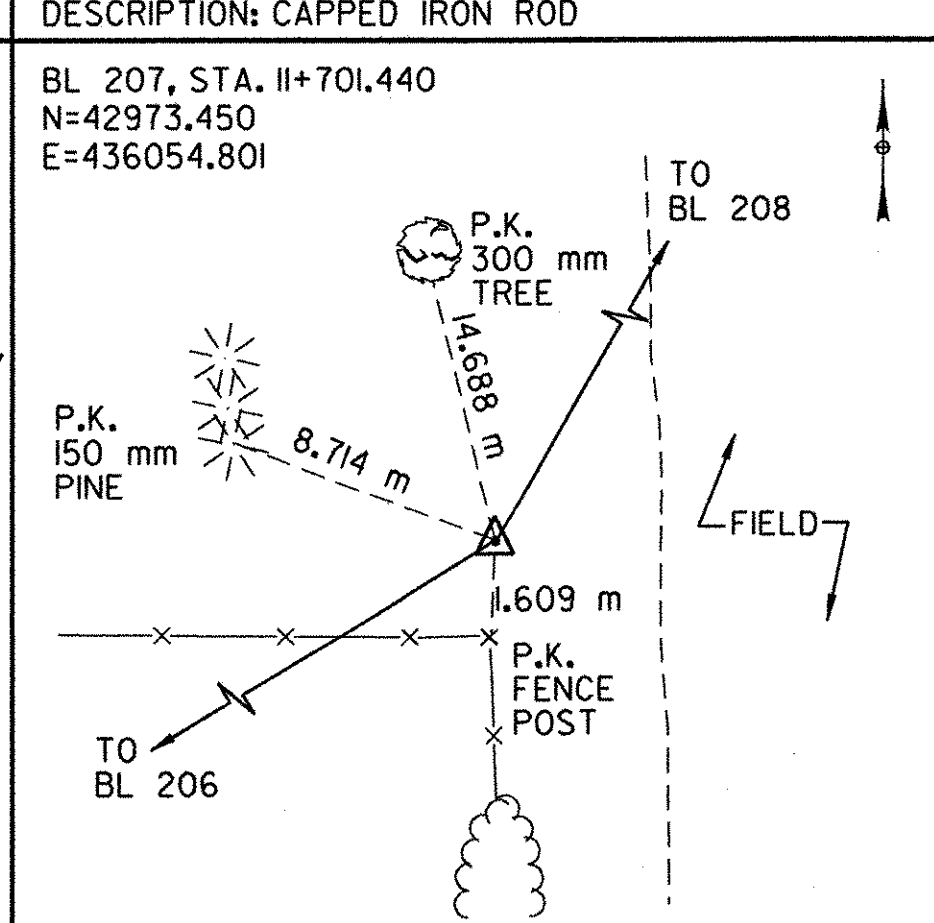
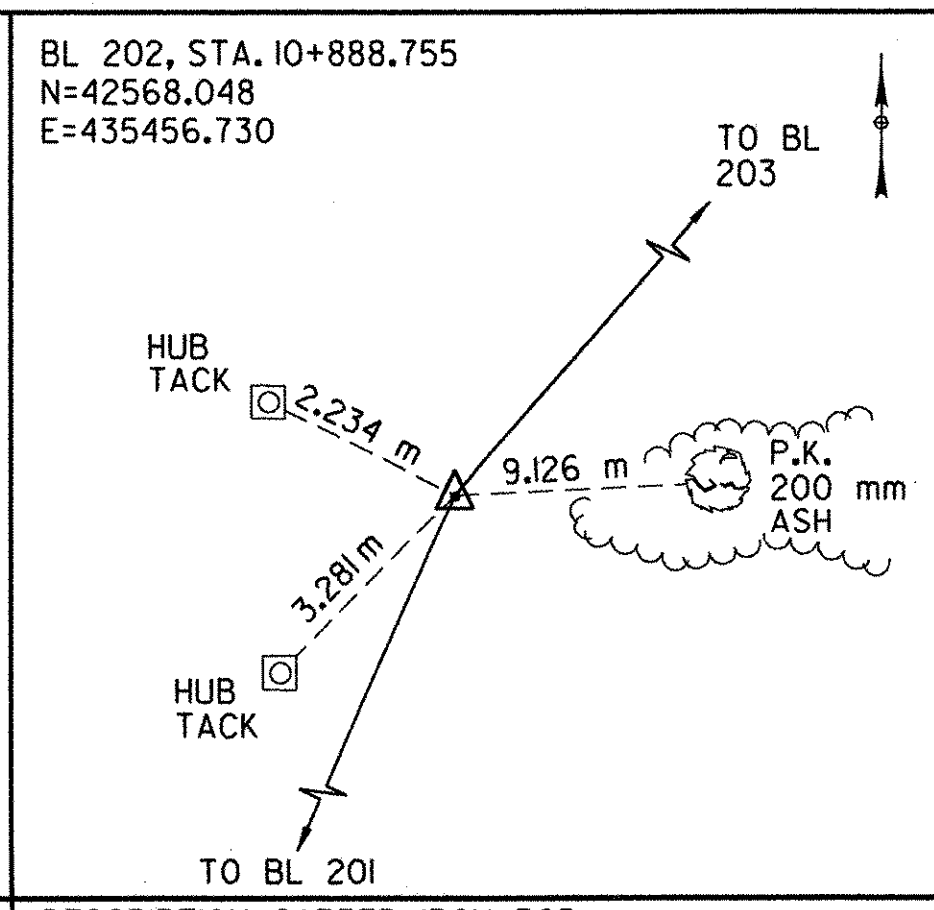
DESCRIPTION: CAPPED IRON ROD



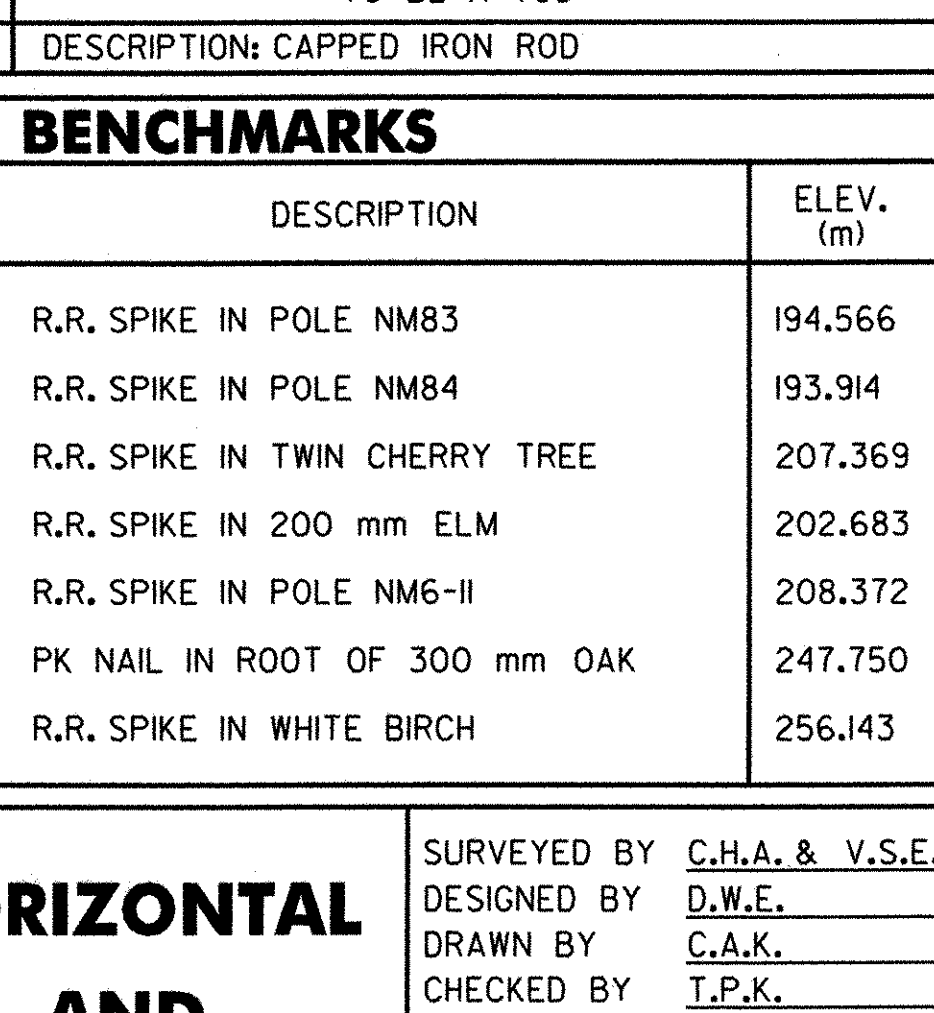
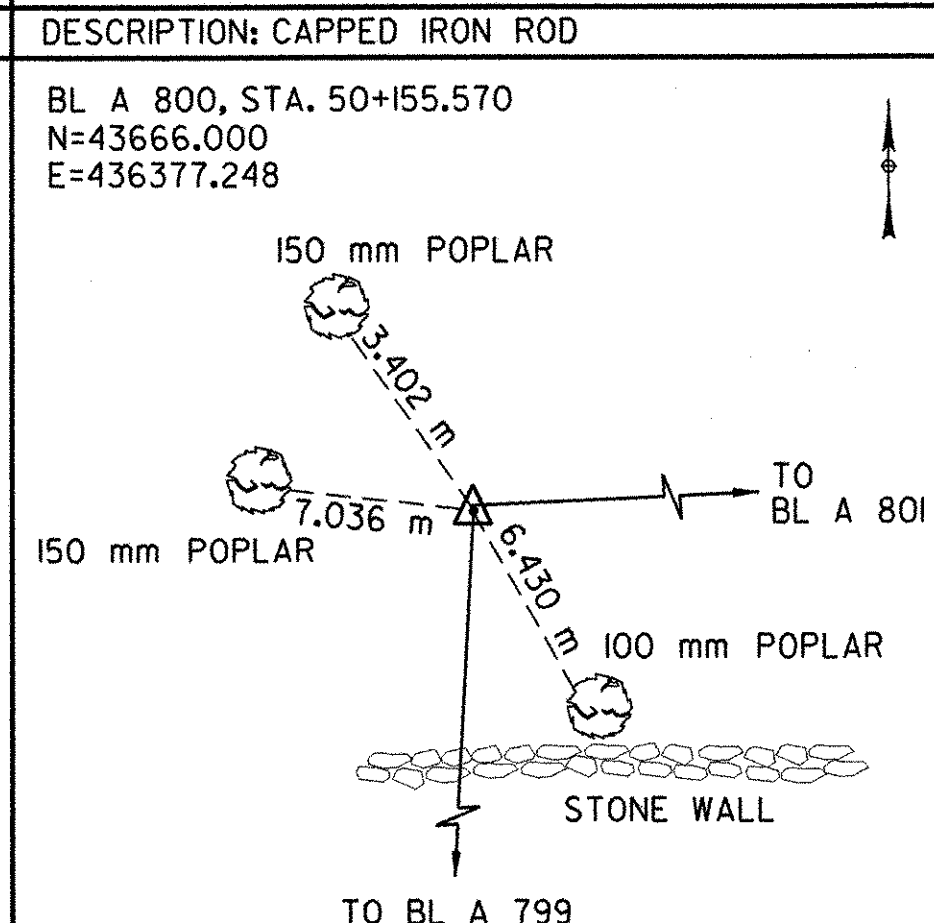
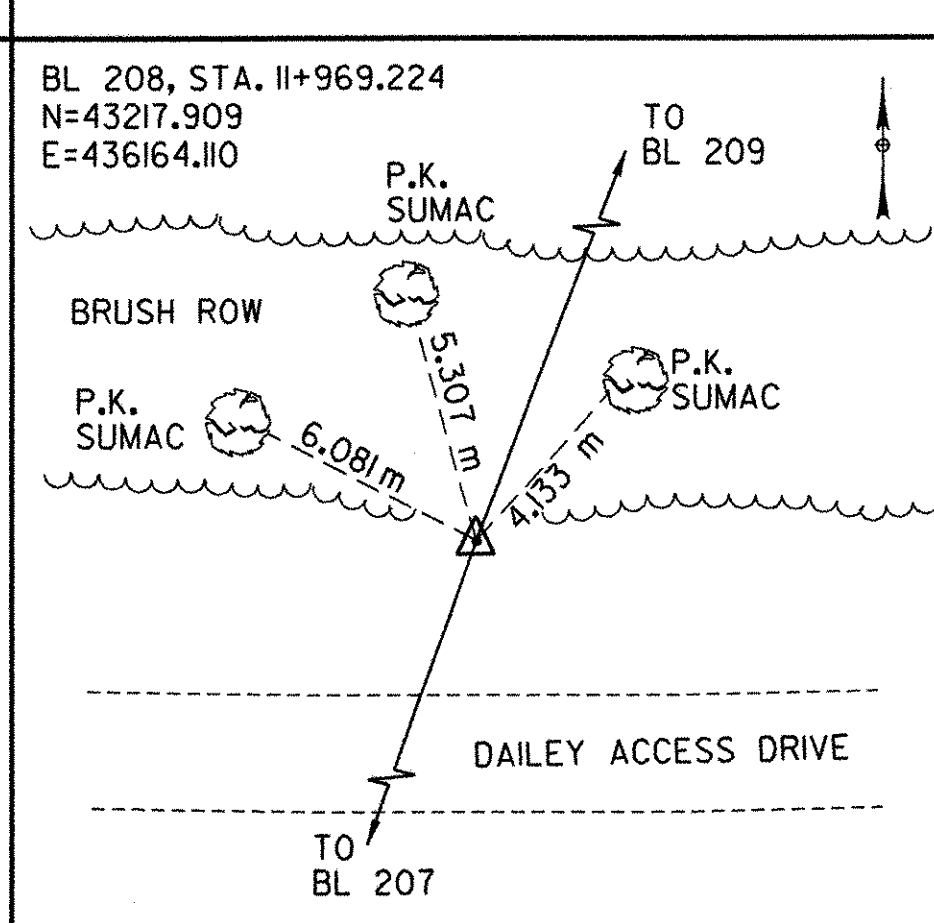
DESCRIPTION: CAPPED IRON ROD



DESCRIPTION: CAPPED IRON ROD



DESCRIPTION: CAPPED IRON ROD



DESCRIPTION: CAPPED IRON ROD

BM	DWG. NO.	STATION & OFFSET	DESCRIPTION	ELEV. (m)
1	P-1 & RP-1	STA. 43+175, 10 m, RT.	R.R. SPIKE IN POLE NM83	194.566
2	P-1 & RP-1	STA. 43+219, 28 m, RT.	R.R. SPIKE IN POLE NM84	193.914
3	RP-2	STA. 43+727, 34 m, RT.	R.R. SPIKE IN TWIN CHERRY TREE	207.369
4	RP-2	STA. 43+864, 81 m, RT.	R.R. SPIKE IN 200 mm ELM	202.683
5	RP-2	STA. 44+194, 73 m, LT.	R.R. SPIKE IN POLE NM6-II	208.372
6	RP-3	STA. 44+853, 41 m, RT.	PK NAIL IN ROOT OF 300 mm OAK	247.750
7	RP-3	STA. 45+124, 34 m, RT.	R.R. SPIKE IN WHITE BIRCH	256.143

HORIZONTAL AND VERTICAL CONTROLS

SURVEYED BY C.H.A. & V.S.E. DATE 12/93
 DESIGNED BY D.W.E. DATE 2/04
 DRAWN BY C.A.K. DATE 2/04
 CHECKED BY T.P.K. DATE 2/04
 DESIGN FILE NO. NYBLTIE.DGN
 PROJ. NAME BENNINGTON - HOOSICK
 D.P.I. 0146(I) C/1
 PROJ. NO. P.I.N. 1306.60
 SHEET 32 OF 92 DWG NO. HVC-2

DATUM
 VERTICAL NAVD 88
 HORIZONTAL NAD 83 (1992)