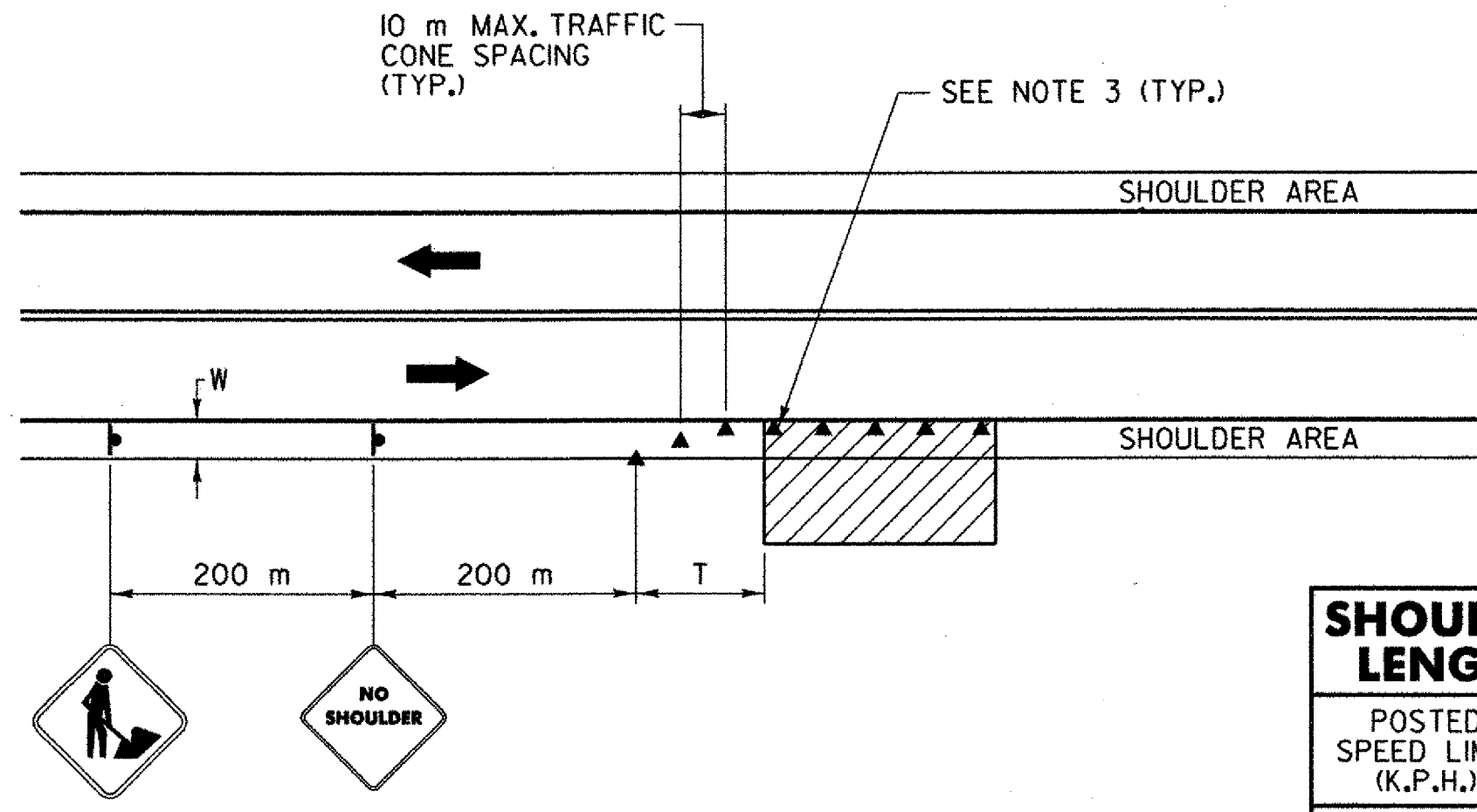
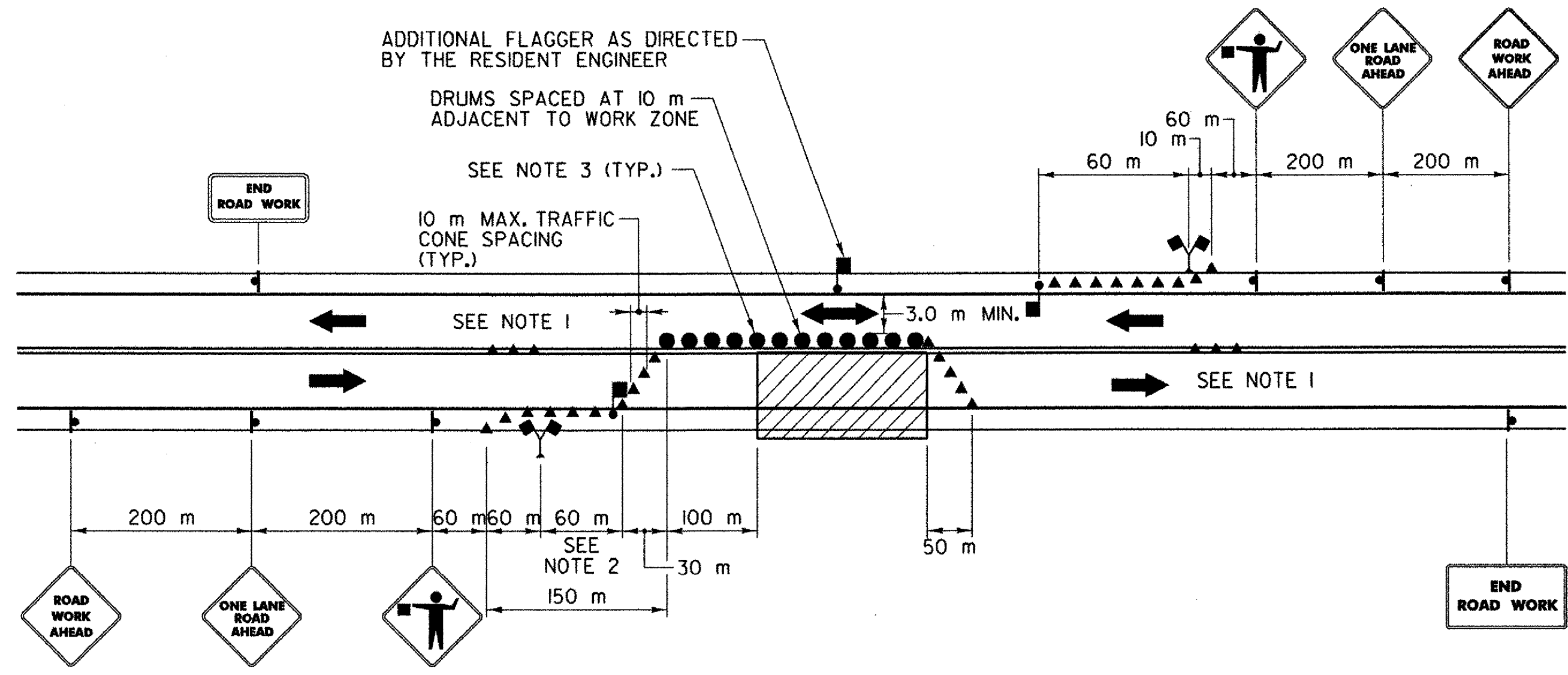


FILE NAME = \\S:\Projects\Bennington\connect\mpt-2.dgn  
 DATE/TIME = 2/23/2004 11:22:25  
 IN CHARGE OF I. KARRIS  
 DESIGNED BY D. EMERICH  
 CHECKED BY D. GOZALKOWSKI  
 ESTIMATED BY D. EMERICH  
 DRAFTED BY D. GOZALKOWSKI  
 CHECKED BY C. KAHLBAUGH  
 DATE 2/04



**TYPICAL SHOULDER CONTROL**



**ALTERNATING ONE-WAY TRAFFIC CONTROL**  
**TRAFFIC CONTROL DETAILS**  
 N.T.S.

- NOTES:
- CONES ON CENTERLINE MAY BE ELIMINATED FOR NARROW CROSS SECTIONS, AS DIRECTED BY THE RESIDENT ENGINEER.
  - PLACEMENT OF THE FLAG TREE SHALL BE BEHIND CHANNELIZATION, ON SHOULDER, AT A MINIMUM OF 30 m IN ADVANCE OF THE FLAGGER NOT TO EXCEED 1/2 OF THE DISTANCE BETWEEN FLAGGER SIGN AND FLAGGER.
  - CONES SHALL BE REPLACED BY REFLECTORIZED DRUMS OR OTHER APPROPRIATE DELINEATION DEVICES IN ACCORDANCE WITH SECTION 619-3.01G OF THE NYS DOT STANDARD SPECIFICATIONS WHEN THERE IS A DROP-OFF NEAR THE EDGE OF TRAVEL WAY OR AS DIRECTED BY THE RESIDENT ENGINEER.

TEXT	MUTCD	COLOR	SIZE
	W4-3C	BLACK ON ORANGE	750x750 (0.56 m <sup>2</sup> )
	W4-13C	BLACK ON ORANGE	750x750 (0.56 m <sup>2</sup> )
	W8-1C	BLACK ON ORANGE	900x900 (0.81 m <sup>2</sup> )
	W8-6C	BLACK ON ORANGE	900x900 (0.81 m <sup>2</sup> )
	W8-22C	BLACK ON ORANGE	900x900 (0.81 m <sup>2</sup> )
	G11-2D	BLACK ON ORANGE	1200x600 (0.72 m <sup>2</sup> )
	R8-1D	BLACK ON WHITE	1800x1200 (2.16 m <sup>2</sup> )
	G11-1C	BLACK ON ORANGE	1500x900 (1.35 m <sup>2</sup> )
	W4-1D	BLACK ON ORANGE	900x900 (0.81 m <sup>2</sup> )
	W4-12D	BLACK ON WHITE	900x900 (0.81 m <sup>2</sup> )
	W5-6C W5-17X	BLACK ON ORANGE	750x750 600x450 (0.83 m <sup>2</sup> )
	W8-1C W9-1Y	BLACK ON ORANGE	900x900 600x600 (1.17 m <sup>2</sup> )
	W1-1C	BLACK ON ORANGE	1200x600 (0.72 m <sup>2</sup> )
	G11-4C	BLACK ON ORANGE	1200x450 (0.54 m <sup>2</sup> )
	R8-6C	BLACK ON WHITE	1500x750 (1.13 m <sup>2</sup> )
	R13-14C (MOD.)	BLACK ON WHITE	900x1200 (1.08 m <sup>2</sup> )
	R2-13C	BLACK ON WHITE	600x900 (0.54 m <sup>2</sup> )

**LEGEND**

- WORK ZONE
- TRAFFIC FLOW
- CONSTRUCTION SIGN (ITEM 619.02 M)
- REFLECTORIZED PLASTIC DRUM
- TRAFFIC CONE
- FLAGGER
- FLAG TREE

\*DETOUR NOT USED

\* FOR USE ON EXISTING S.H.1426 AS DIRECTED BY THE RESIDENT ENGINEER

ALL DIMENSIONS IN MILLIMETERS UNLESS SHOWN OTHERWISE

**MAINTENANCE AND PROTECTION OF TRAFFIC**

SURVEYED BY C.H.A. & V.S.E. DATE 12/93  
 DESIGNED BY D.W.E. DATE 2/04  
 DRAWN BY C.A.K. DATE 2/04  
 CHECKED BY T.P.K. DATE 2/04

DESIGN FILE NO. MPT-1.DGN

PROJ. NAME BENNINGTON - HOOSICK D.P.I. 0146(1) C/1  
 PROJ. NO. P.I.N. 1306.60  
 SHEET 20 OF 92 DWG NO. MPT-2