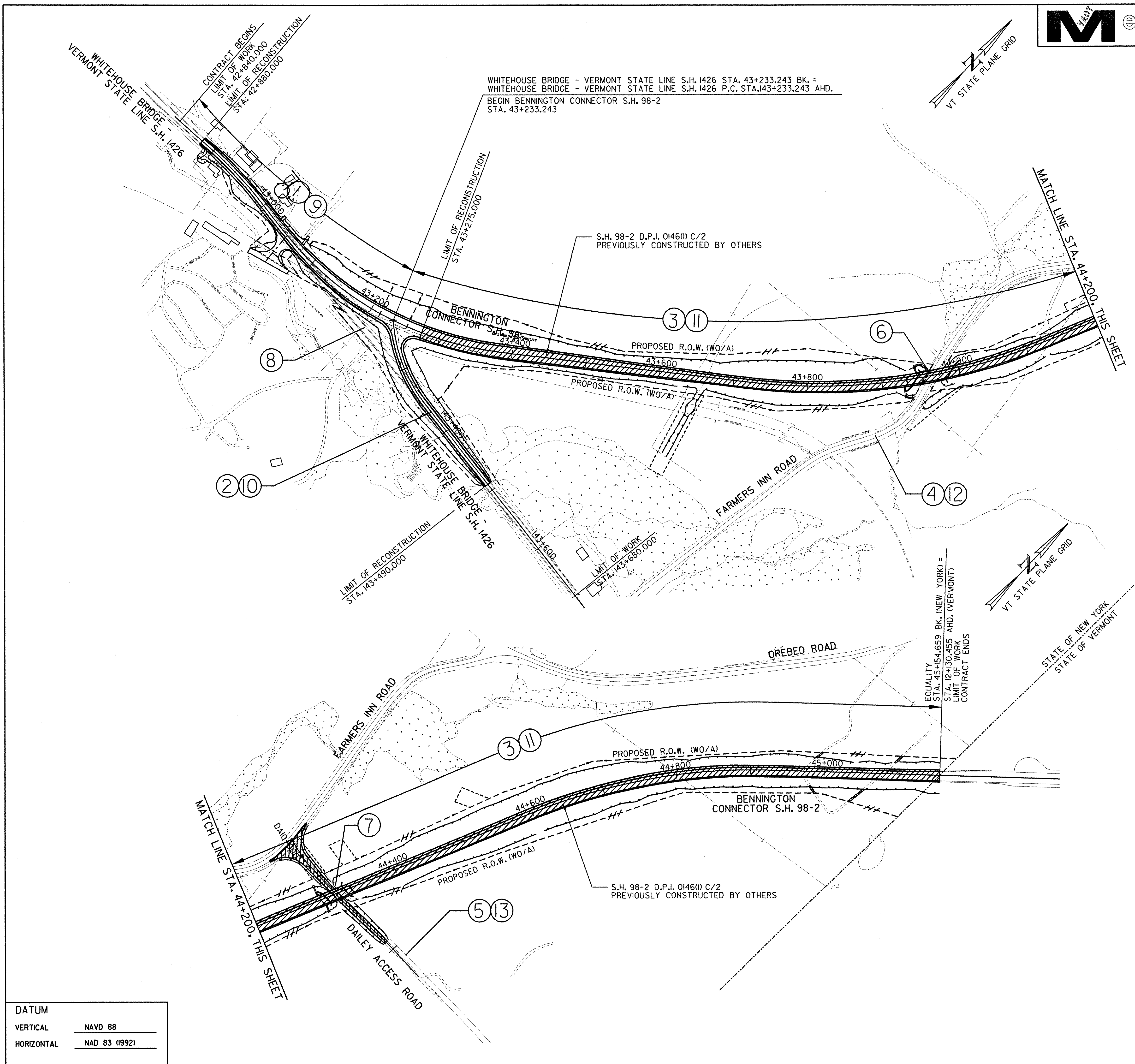


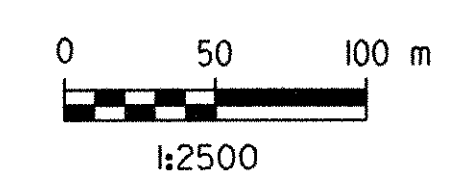
FILE NAME = J:\5315\NYS\DOT\CONTRACT\NYMJ-2.DGN
 DATE/USER = 2/22/04
 IN CHARGE OF I. KARRS
 DESIGNED BY D. EMERICH
 CHECKED BY D. EMERICH
 ESTIMATED BY D. EMERICH
 CHECKED BY D. GOZALKOWSKI
 DRAFTED BY D. GOZALKOWSKI
 CHECKED BY C. KAHLBAUGH
 DATE 2/04
 I. BURTMICK



FED. ROAD REG. NO.	STATE	FEDERAL AID PROJECT NO.	SHEET NO.	TOTAL SHEETS
1	N.Y.	0146001	18	92
BENNINGTON CONNECTOR S.H. 98-2		P.I.N. 1306.60		
WHITEHOUSE BRIDGE - VERMONT STATE LINE S.H. 1426		RENSELAER COUNTY		



NOTE:
SEE DWG. MJ-1 FOR MAINTENANCE JURISDICTION TABLE.



DATUM	
VERTICAL	NAVD 88
HORIZONTAL	NAD 83 (1992)

MAINTENANCE JURISDICTION	SURVEYED BY	C.H.A. & V.S.E.	DATE	12/93
	DESIGNED BY	D.W.E.	DATE	2/04
	DRAWN BY	C.A.K.	DATE	2/04
	CHECKED BY	T.P.K.	DATE	2/04
	DESIGN FILE NO.	NYMJ-2.DGN		
	PROJ. NAME	BENNINGTON - HOOSICK D.P.I. 0146(1) C/1		
	PROJ. NO.	P.I.N. 1306.60		
SHEET	18	OF	92	DWG NO. MJ-2