

TEMPORARY AND DURABLE 100mm YELLOW LINE

STA. 6+080.0 TO STA. 6+760.0 SOLID LT. AND RT.

TEMPORARY AND DURABLE 100mm WHITE LINE

STA. 6+080.0 TO STA. 6+760.0 SOLID LT. AND RT. (EDGE LINE)
 STA. 6+080.0 TO STA. 6+150.0 DASHED (TRUCK LANE)

TEMPORARY AND DURABLE 600mm STOP BAR

STA. 6+081.3 RT. (RAILROAD CROSSING)
 STA. 6+269.1 RT. (RAILROAD CROSSING)
 STA. 6+284.7 LT. (RAILROAD CROSSING)
 STA. 6+472.5 LT. (RAILROAD CROSSING)
 STA. 6+487.5 LT. (RAILROAD CROSSING)

TEMPORARY AND DURABLE LETTER OR SYMBOL

STA. 6+480.0 LT. - "R X R"

MANUFACTURED TERMINAL SECTION (FLARED)

STA. 6+219.2 RT. TO STA. 6+230.6 RT.
 STA. 6+268.6 RT. TO STA. 6+280.0 RT.

STEEL BEAM GUARD RAIL

STA. 6+230.6 RT. TO STA. 6+268.6 RT.

SHOULDER BERM REMOVAL

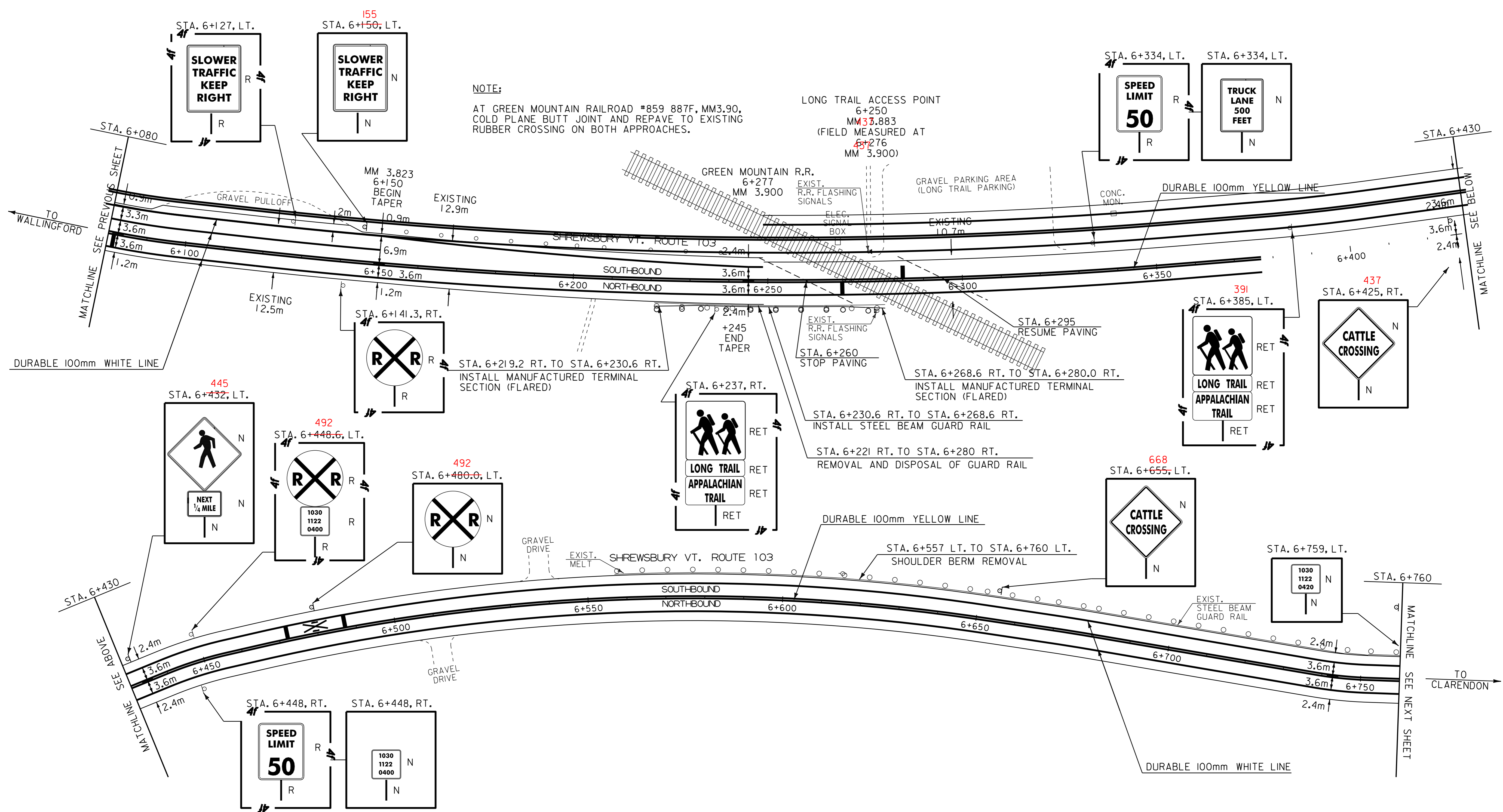
STA. 6+557 LT. TO STA. 6+760 LT.

REMOVAL AND DISPOSAL OF GUARD RAIL

STA. 6+221 RT. TO STA. 6+280 RT.

REMOVING SIGNS

8 -- AS SHOWN



NOTE:
 AT GREEN MOUNTAIN RAILROAD #859 887F, MM3.90, COLD PLANE BUTT JOINT AND REPAVE TO EXISTING RUBBER CROSSING ON BOTH APPROACHES.

LONG TRAIL ACCESS POINT
 6+250
 MM 3.883
 (FIELD MEASURED AT
 6+276
 MM 3.900)

EXIST. R.R. FLASHING SIGNALS
 STA. 6+260 STOP PAVING

STA. 6+230.6 RT. TO STA. 6+268.6 RT.
 INSTALL STEEL BEAM GUARD RAIL

STA. 6+221 RT. TO STA. 6+280 RT.
 REMOVAL AND DISPOSAL OF GUARD RAIL

STA. 6+557 LT. TO STA. 6+760 LT.
 SHOULDER BERM REMOVAL

STA. 6+268.6 RT. TO STA. 6+280.0 RT.
 INSTALL MANUFACTURED TERMINAL SECTION (FLARED)

STA. 6+219.2 RT. TO STA. 6+230.6 RT.
 INSTALL MANUFACTURED TERMINAL SECTION (FLARED)

STA. 6+295 RESUME PAVING

GRAVEL PARKING AREA (LONG TRAIL PARKING)

GRAVEL DRIVE

GRAVEL DRIVE

GRAVEL DRIVE

GRAVEL DRIVE

- LEGEND
- N = NEW
 - R = REMOVE
 - R & S = REMOVE AND SALVAGE
 - S = SALVAGE SIGN
 - RET = RETAIN
 - B - B = BACK TO BACK

PAVING PROJECT LAYOUT #16	PROJECT: WALLINGFORD-CLARENDON	PROJECT NO.: NH 2216(1)S
	DESIGN FILE NAME: /pave/99b184/pb184.dgn	PLOT DATE: 13-NOV-2013 13:
	IPARM FILE NAME: pb184i16.i	SURVEY DATE:
	SURVEYED BY: SJL, ACT	DRAWN BY: ACT
	SQUAD LEADER: JAV	SHEET: 25 OF 51

DATUM	
VERTICAL	N/A
HORIZONTAL	N/A