

TEMPORARY AND DURABLE 100mm YELLOW LINE

STA. 3+310.0 TO STA. 3+411.8 DASHED
 STA. 3+411.8 TO STA. 3+613.0 DASHED LT. AND SOLID RT.
 STA. 3+613.0 TO STA. 4+010.0 SOLID LT. AND RT.

TEMPORARY AND DURABLE 100mm WHITE LINE

STA. 3+310.0 TO STA. 4+010.0 SOLID LT. AND RT. (EDGE LINE)
 STA. 3+716.7 TO STA. 3+726.1 DOTTED RT. (AT RAILROAD CROSSING)
 STA. 3+761.1 TO STA. 3+770.5 DOTTED LT. (AT RAILROAD CROSSING)

TEMPORARY AND DURABLE 600mm STOP BAR

STA. 3+517.0 RT. (RAILROAD CROSSING)
 STA. 3+532.0 RT. (RAILROAD CROSSING)
 STA. 3+719.3 RT. (RAILROAD CROSSING)
 STA. 3+767.7 LT. (RAILROAD CROSSING)
 STA. 3+962.8 LT. (RAILROAD CROSSING)
 STA. 3+977.8 LT. (RAILROAD CROSSING)

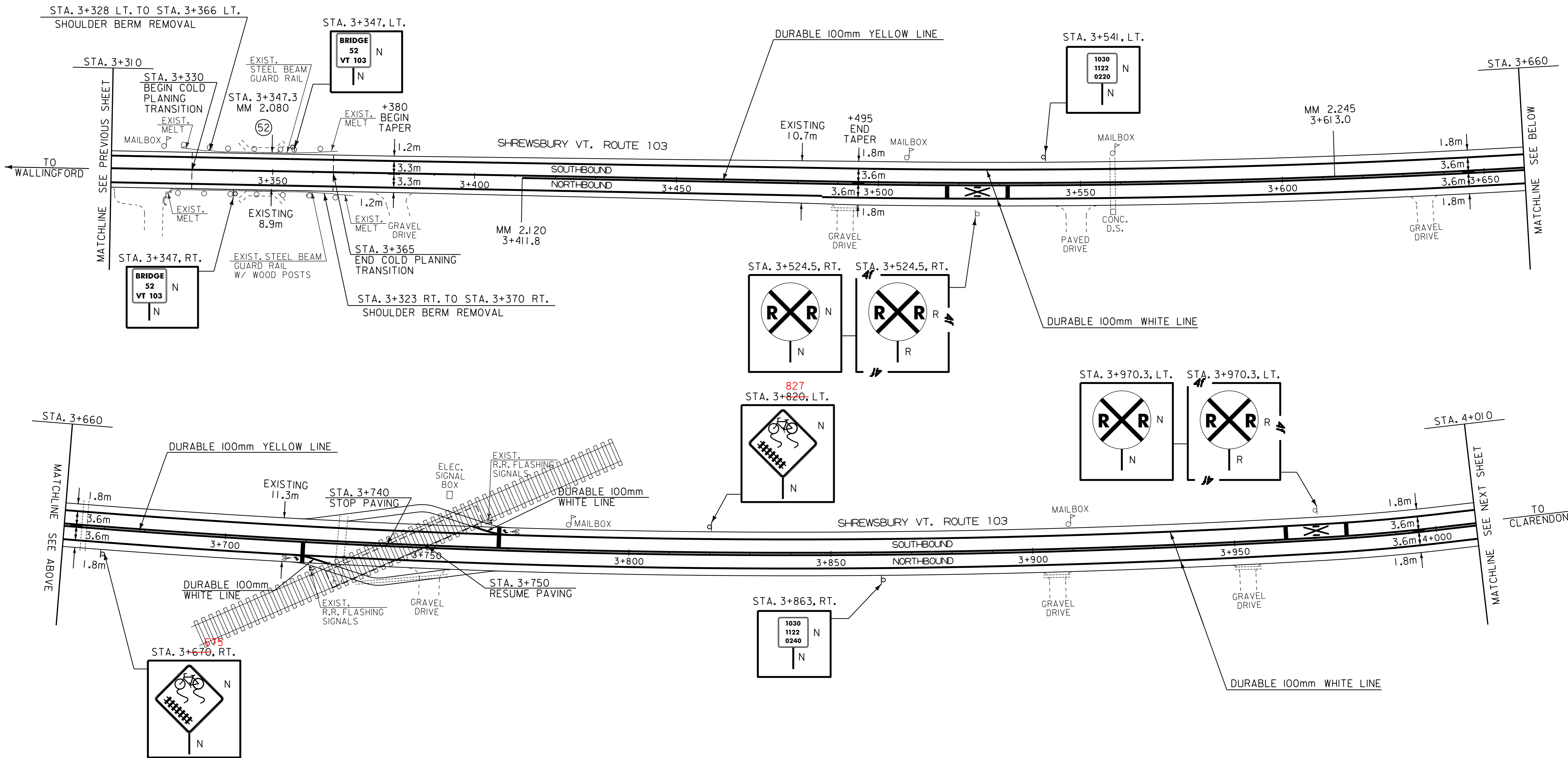
SHOULDER BERM REMOVAL

STA. 3+323 RT. TO STA. 3+370 RT.
 STA. 3+328 LT. TO STA. 3+366 LT.

TEMPORARY AND DURABLE LETTER OR SYMBOL

STA. 3+524.5 RT. - "R X R"
 STA. 3+716.6 RT. - (FOR BIKE LANE)
 STA. 3+718.4 RT. - (FOR BIKE LANE)
 STA. 3+768.6 LT. - (FOR BIKE LANE)
 STA. 3+770.1 LT. - (FOR BIKE LANE)
 STA. 3+970.3 LT. - "R X R"

REMOVING SIGNS
 2 -- AS SHOWN



NOTE:

AT GREEN MOUNTAIN RAILROAD #859 886Y, PAVE EXISTING BIKE PATH ON BOTH VT 103 APPROACHES. COLD PLANE BUTT JOINT AND REPAVE TO EXISTING RUBBER CROSSING ON BOTH APPROACHES.

LEGEND

- N = NEW
- R = REMOVE
- R & S = REMOVE AND SALVAGE
- S = SALVAGE SIGN
- RET = RETAIN
- B - B = BACK TO BACK

DATUM

VERTICAL	N/A
HORIZONTAL	N/A

PAVING PROJECT LAYOUT #12	PROJECT: WALLINGFORD-CLARENDON	PROJECT NO.: NH 2216(1)S
	DESIGN FILE NAME: /pave/99b184/pb184.dgn	PLOT DATE: 13-NOV-2013 13:
	IPARM FILE NAME: pb184i12.i	SURVEY DATE:
	SURVEYED BY: SJL, ACT	DRAWN BY: ACT
	SQUAD LEADER: JAV	SHEET: 21 OF 51