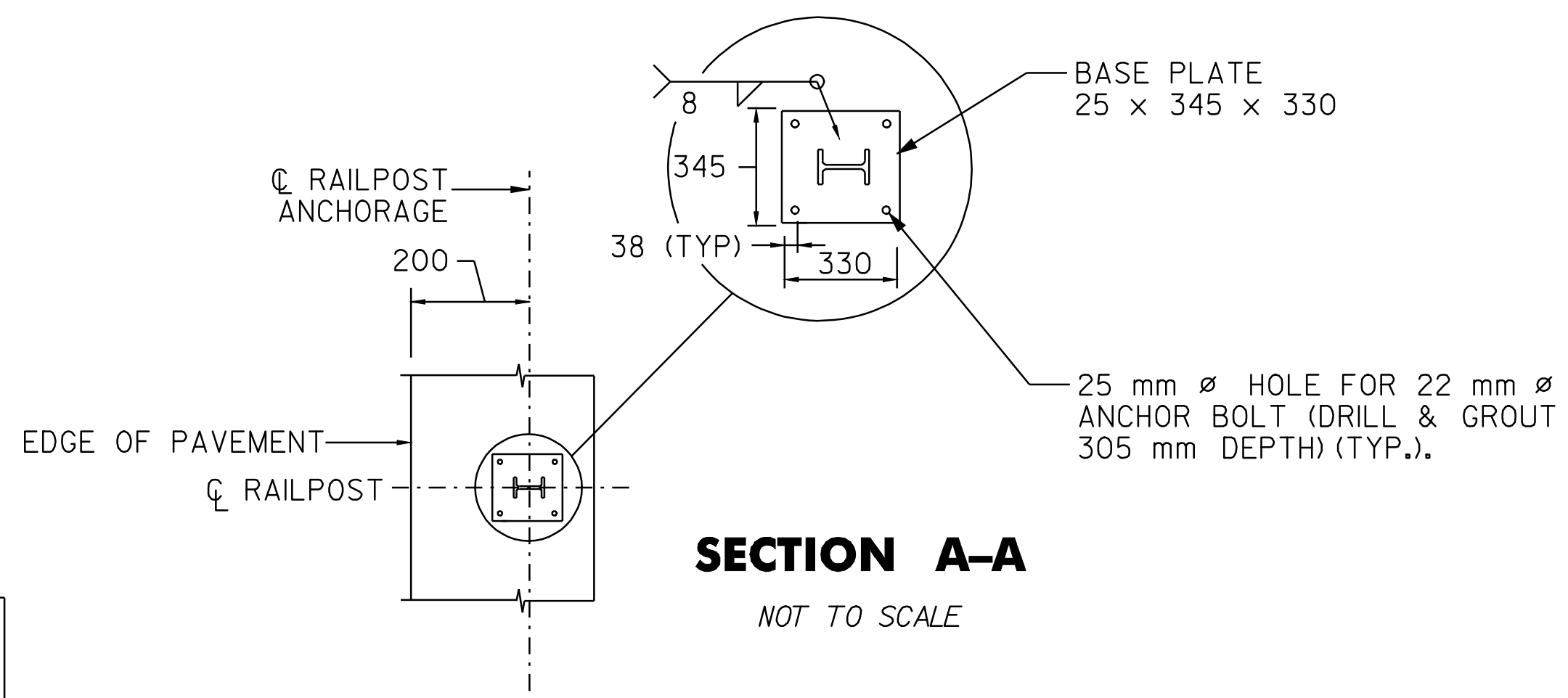
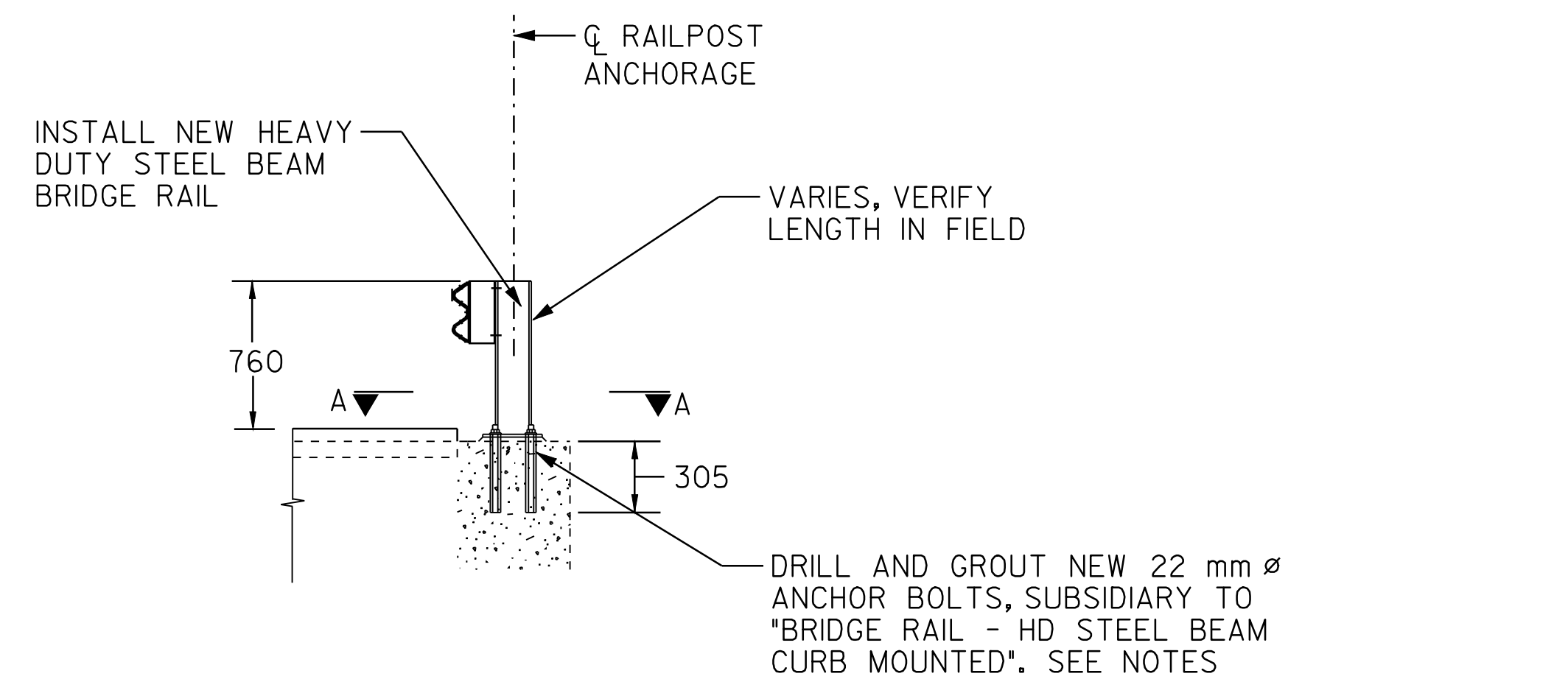


**BRIDGE #58  
DOVER  
STA 2+594.46  
(MM 1.612)**



**NOTES**

1. NEW BRIDGE RAILING POSTS SHALL BE SET NORMAL TO GRADE.
2. ALL WELDING SHALL CONFORM TO THE PROVISIONS OF SUBSECTION 506.10.
3. NEW ASTM A-449-M 22 mm DIAMETER ANCHOR BOLTS TO BE GROUTED IN PLACE SHALL BE FURNISHED WITH TWO NUTS AND ONE WASHER. BOLTS, NUTS AND WASHERS SHALL BE FURNISHED UNDER "HEAVY DUTY STEEL BEAM BRIDGE RAIL."
4. GROUT NEW BOLTS WITH A TWO COMPONENT ADHESIVE MORTAR. DRILLING AND GROUTING NEW ANCHOR BOLTS SHALL BE SUBSIDIARY TO "HEAVY DUTY STEEL BEAM BRIDGE RAIL".
5. A MINIMUM PULLOUT STRENGTH OF 13 600 kg SHALL BE ATTAINED ON ALL NEW BOLTS THAT ARE GROUTED IN PLACE. A SAMPLE GROUTED BOLT WILL BE TESTED BEFORE MATERIALS ARE APPROVED FOR USE, AND THEN RANDOM BOLTS WILL BE FIELD TESTED BY VTRANS TO ENSURE THIS STRENGTH IS BEING ATTAINED. 48-HOURS ADVANCE NOTICE IS REQUIRED TO ALERT VTRANS AS TO WHEN THE CONTRACTOR WILL BE READY FOR THIS TESTING.

NOTE: ALL DIMENSIONS IN MILLIMETERS EXCEPT AS INDICATED

DATUM	
VERTICAL	N/A
HORIZONTAL	N/A

<b>BRIDGE DETAIL SHEET #3</b>	PROJECT: DOVER - STRATTON	PROJECT NO.: STP 2214(I)S
	DESIGN FILE NAME: /pave/99bl80/pbl80.dgn	PLOT DATE: 24-MAY-2007
	IPARM FILE NAME: pbl80br03.i	SURVEY DATE: 5/00
	SURVEYED BY: CLD ENGINEERS INC	DRAWN BY: MPS
	SQUAD LEADER: WRH	SHEET: 47 OF 49