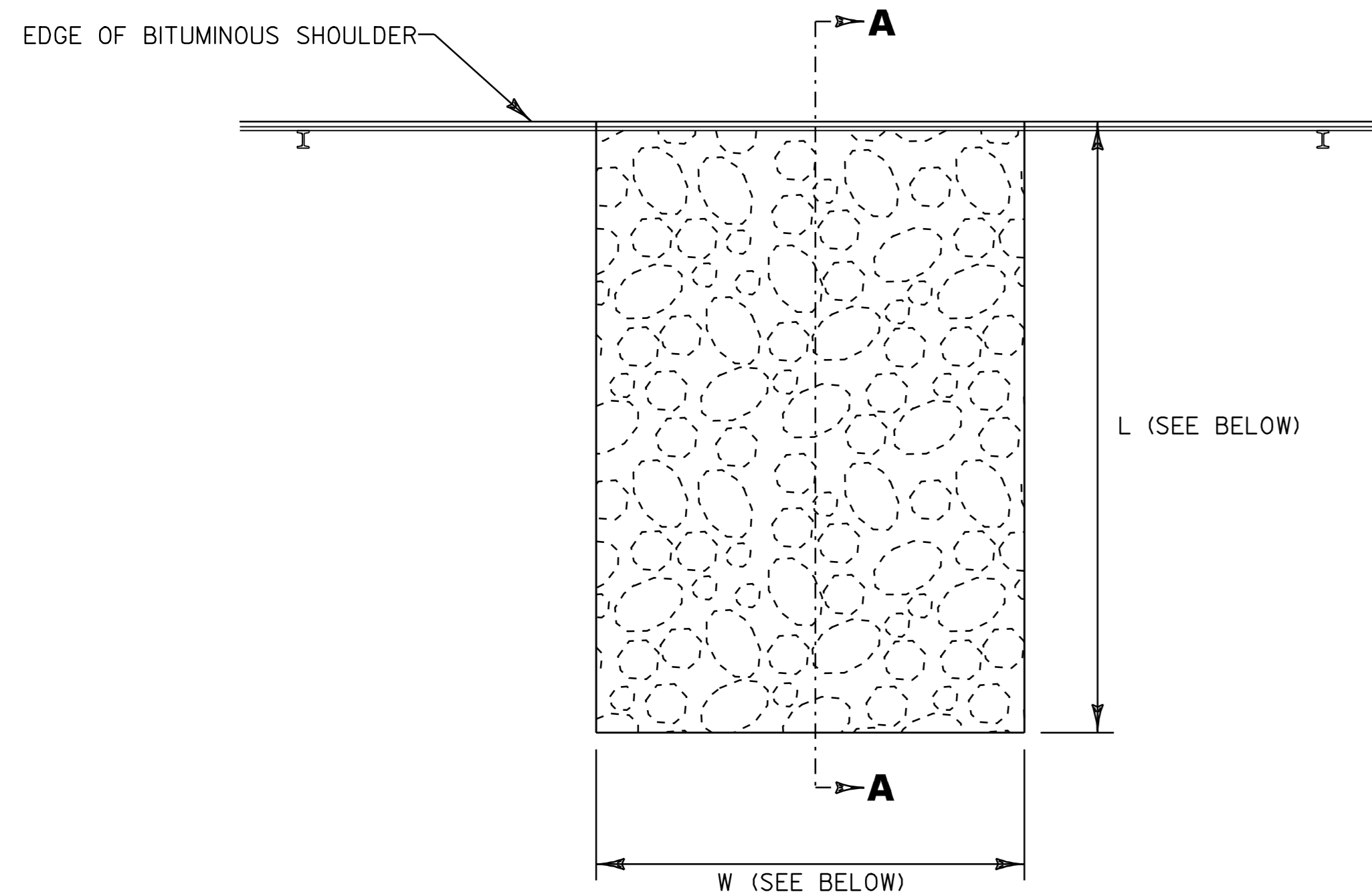


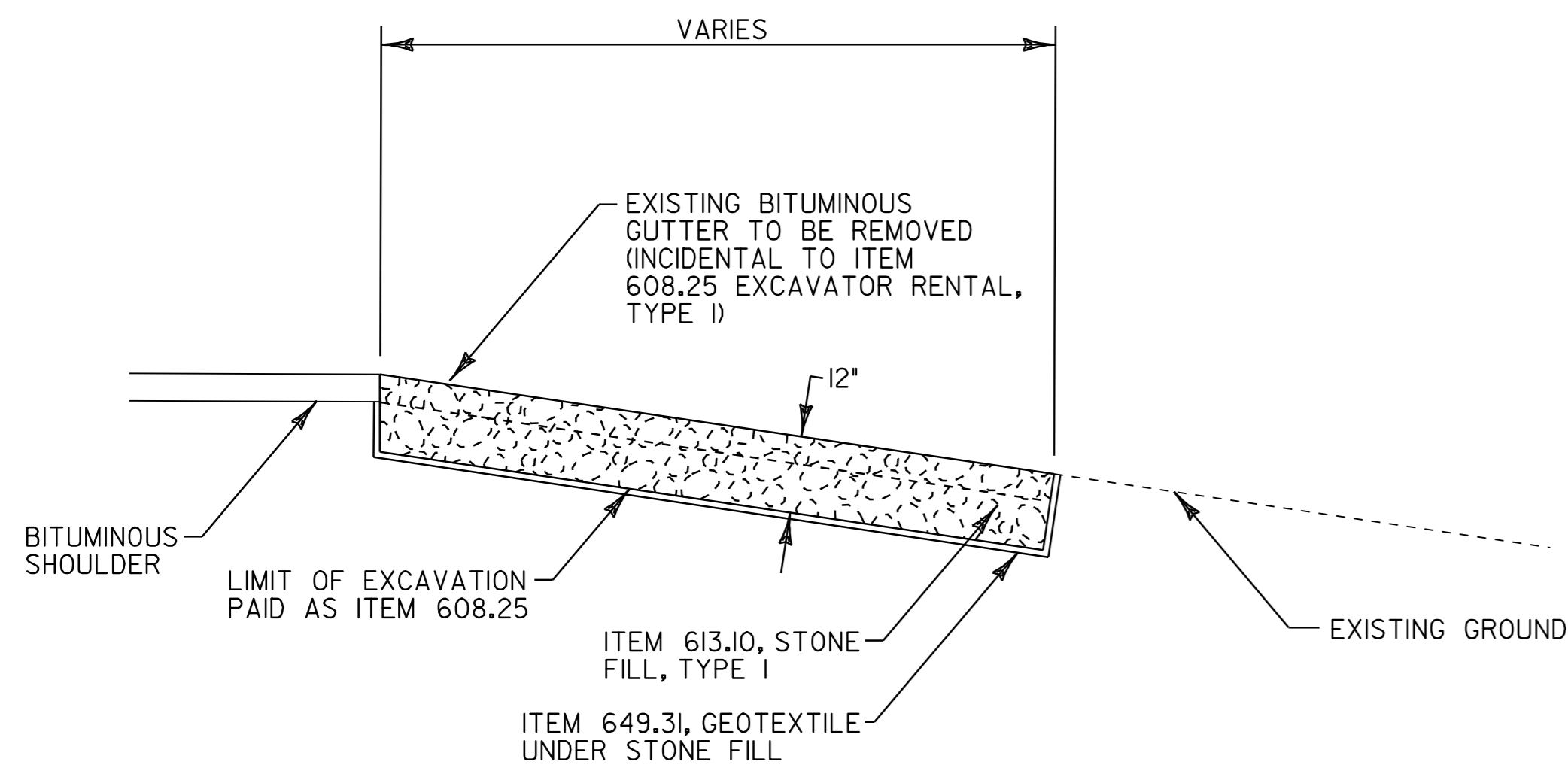
ROADWAY



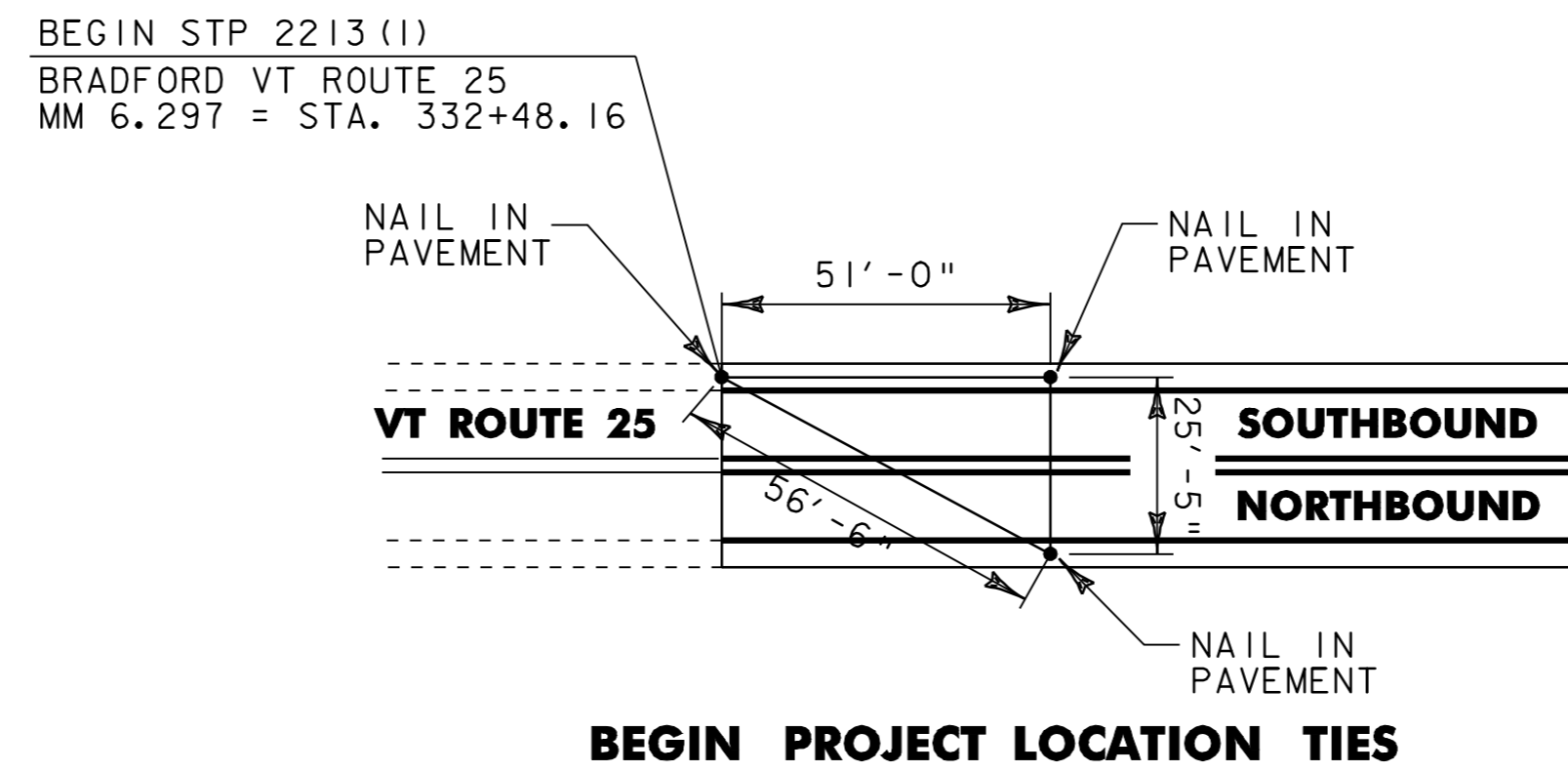
**STONE FILL, TYPE I SLOPE GUTTER
PLAN VIEW**

DIMENSIONS = (L x W x D)

- TOPSHAM STA. 129+20, LT (10' x 5' x 1')
- TOPSHAM STA. 267+27, RT (10' x 5' x 1')
- TOPSHAM STA. 270+85, RT (10' x 5' x 1')

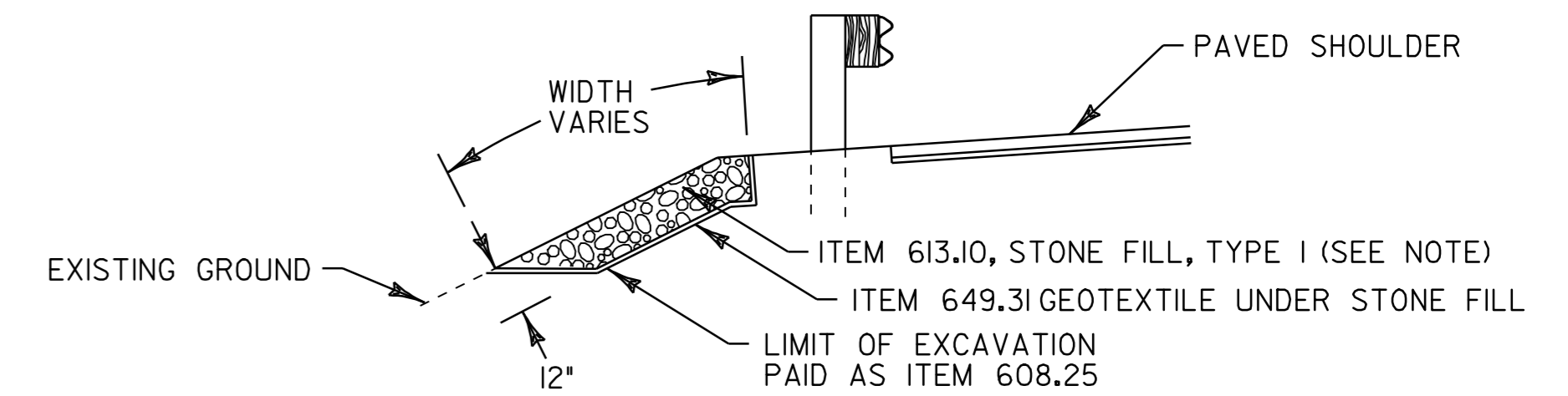


SECTION A-A



BITUMINOUS CONCRETE GUTTER DETAIL

- TOPSHAM STA. 240+70 TO 240+86, LT (4'-6' WIDE)
- TOPSHAM STA. 242+11 TO 245+86, RT (4' WIDE)
- TOPSHAM STA. 259+88 TO 261+96, RT (3' WIDE)

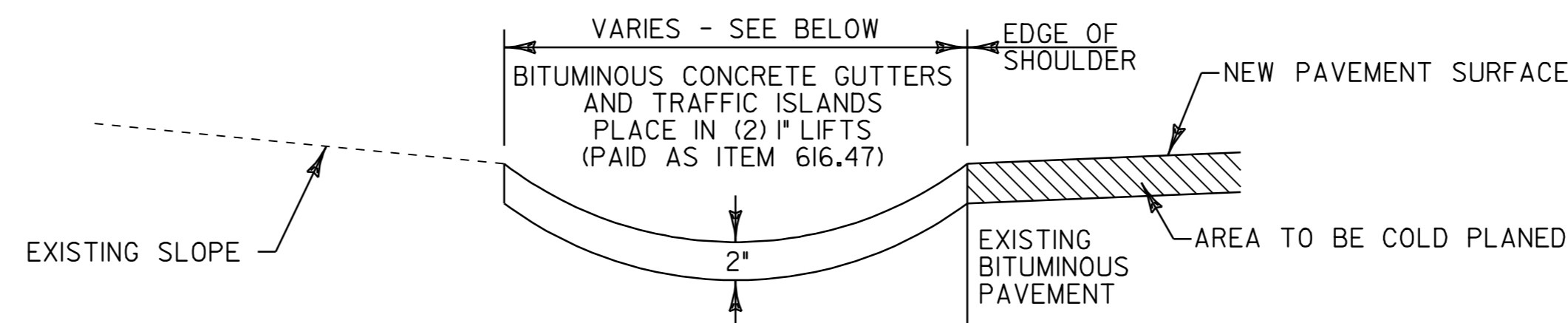


SLOPE EROSION REPAIR DETAIL

(ASSUME A 6' LENGTH UNLESS OTHERWISE NOTED)

- BRADFORD STA. 345+31, LT
- BRADFORD STA. 347+21, RT
- CORINTH STA. 14+30, RT
- CORINTH STA. 36+25, RT
- CORINTH STA. 36+45, RT
- CORINTH STA. 67+50, LT
- CORINTH STA. 71+00, LT
- CORINTH STA. 78+00 TO 78+50, RT (50' ±)
- CORINTH STA. 87+16, LT
- CORINTH STA. 139+15, RT
- CORINTH STA. 152+77, RT
- CORINTH STA. 156+48, RT
- CORINTH STA. 157+99, RT
- TOPSHAM STA. 60+06, LT (20' ±)
- TOPSHAM STA. 85+44, LT
- TOPSHAM STA. 87+66, RT
- TOPSHAM STA. 94+23, RT
- TOPSHAM STA. 100+96, LT
- TOPSHAM STA. 193+40 TO 194+59, RT (120' ±)
- TOPSHAM STA. 234+21, LT
- TOPSHAM STA. 261+16 TO 261+23, RT (7' ±)
- TOPSHAM STA. 268+83, RT
- TOPSHAM STA. 280+29, LT
- TOPSHAM STA. 280+82, LT
- TOPSHAM STA. 280+91, LT
- TOPSHAM STA. 302+07, RT
- TOPSHAM STA. 318+34, LT
- TOPSHAM STA. 334+49, LT
- ORANGE STA. 5+83 TO 7+01, LT (118' ±)
- ORANGE STA. 7+90 TO 8+60, LT (70' ±)

NOTE: AN ESTIMATED QUANTITY OF ITEM 613.11 STONE FILL, TYPE II HAS BEEN INCLUDED FOR USE AS DIRECTED BY THE RESIDENT ENGINEER.



NOT TO SCALE

**MISCELLANEOUS
DETAIL
SHEET**

PROJECT NAME:	BRADFORD - ORANGE
PROJECT NUMBER:	STP 2213(1)
FILE NAME:	p99b178.dgn
PROJECT LEADER:	JLL
DESIGNED BY:	STANTEC
IPARM FILE:	p99b178md.i
PLOT DATE:	28-MAY-2010 13:4
DRAWN BY:	STANTEC
CHECKED BY:	JLL
SHEET	83 OF 84

