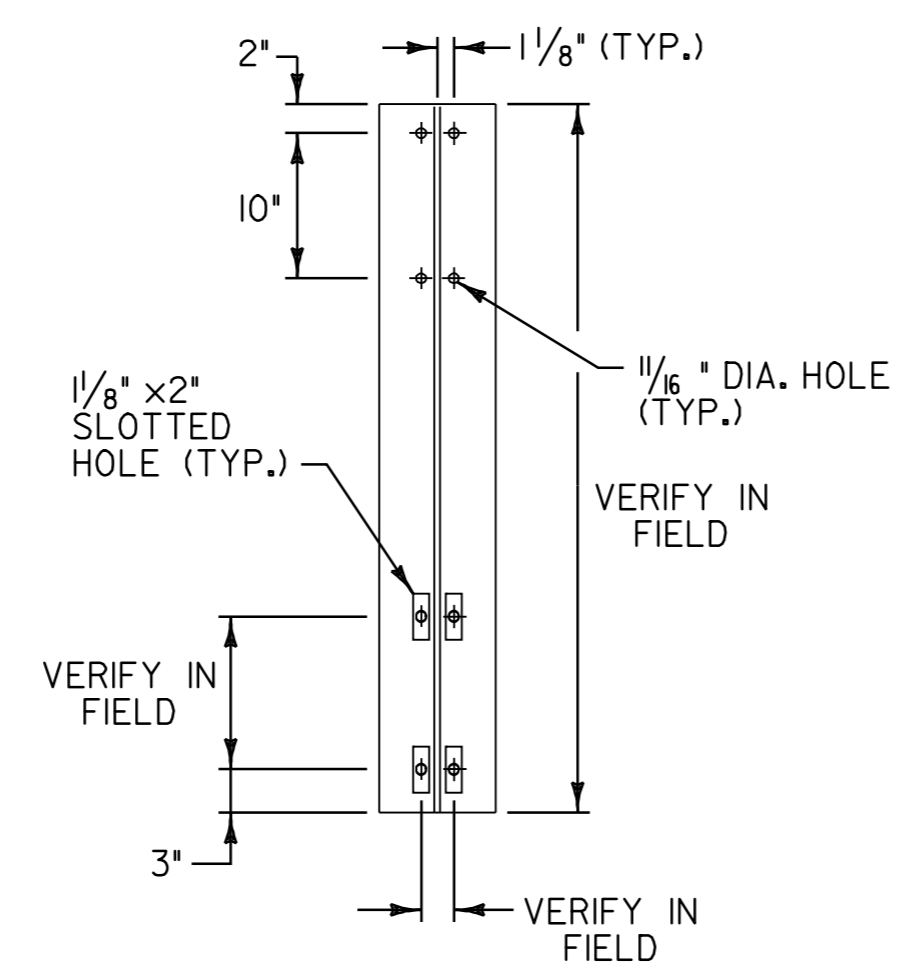
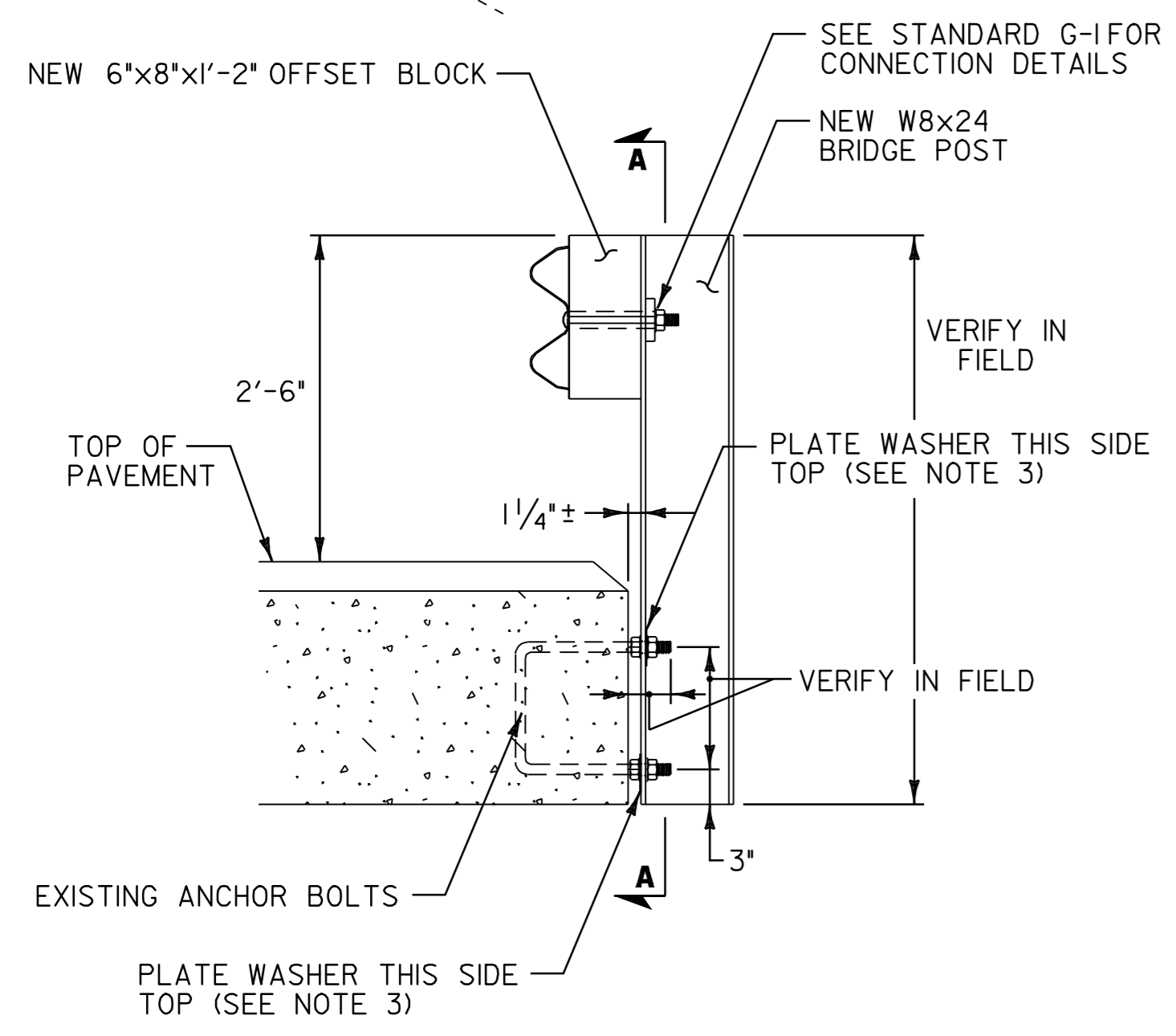


BR 23 TOPSHAM MM 5.704 = STA. 301+17



SECTION A-A

BR 23 BRIDGE POST DETAIL

NOTES

1. LOCATION OF EXISTING ANCHOR BOLTS TO BE VERIFIED IN THE FIELD BY THE CONTRACTOR PRIOR TO ORDERING BRIDGE POSTS.
2. POSTS SHALL BE SHOP CUT AND DRILLED PRIOR TO GALVANIZING.
3. SEE VAOT STANDARD SHEETS G-1, G-1d, AND SB-R6-82 FOR ADDITIONAL DETAILS.
4. ALL HEAVY DUTY STEEL BEAM BRIDGE RAIL, OFFSET BLOCKS AND RELATED HARDWARE SHALL BE PAID FOR UNDER ITEM 525.60 BRIDGE RAILING REPAIR, TYPE III.
5. BRIDGE RAIL SHALL BE GALVANIZED HD STEEL BEAM RAIL.
6. BRIDGE APPROACH RAIL HEIGHT SHALL BE TRANSITIONED TO NORMAL ROADWAY RAIL HEIGHT IN 25'.
7. FOR BRIDGE RAILING, THE TRANSITION POST SHALL HAVE AN OFFSET BLOCK AND BE LOCATED AS CLOSE AS POSSIBLE TO THE MID-POINT BETWEEN THE BRIDGE END POST AND APPROACH POST 1.
8. APPROACH RAILING SHALL BE GALVANIZED HD STEEL BEAM FOR AT LEAST 25' FROM THE ENDS OF THE BRIDGE.
9. SPLICES SHALL LAP IN DIRECTION OF TRAFFIC FLOW.
10. NEW BRIDGE RAILING POSTS SHALL BE SET NORMAL TO GRADE.
11. ALL WELDING SHALL CONFORM TO THE PROVISIONS OF SUBSECTION 506.10.
12. SEE VAOT STANDARD SHEET G-1 FOR DELINEATION DETAILS AND PLACEMENT.
13. ERECT DELINEATORS ON EVERY FIFTH POST OR APPROXIMATELY 29.5' APART. PAYMENT SHALL BE INCIDENTAL TO OTHER ITEMS.

NOT TO SCALE

<p>BRIDGE DETAIL SHEET NO. 8</p>	PROJECT NAME: BRADFORD - ORANGE
	PROJECT NUMBER: STP 2213(1)
	FILE NAME: p99b178.dgn
	PLOT DATE: 28-MAY-2010 13:4
PROJECT LEADER: JLL	DRAWN BY: STANTEC
DESIGNED BY: STANTEC	CHECKED BY: JLL
IPARM FILE: z99b178bds8.i	SHEET 81 OF 84

