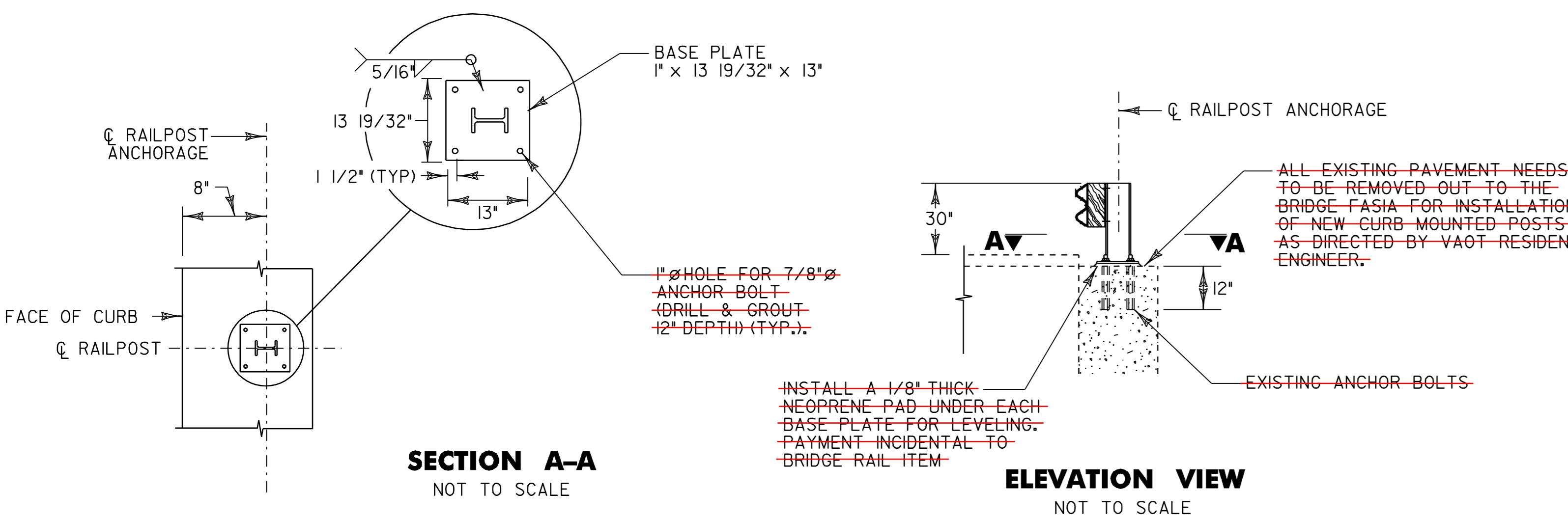


BR 20 TOPSHAM MM 5.145 = STA. 271+65



PROPOSED BRIDGE RAIL MOUNTING DETAILS FOR BRIDGE BR 20

- NOT TO SCALE**
- SEE VAOT STANDARDS G-1 AND G-1d FOR ADDITIONAL DETAILS.
 - ALL HEAVY DUTY STEEL BEAM BRIDGE RAIL, OFFSET BLOCKS AND RELATED HARDWARE SHALL BE PAID FOR UNDER ITEM 525.60 BRIDGE RAILING REPAIR, TYPE III.
 - BRIDGE RAIL SHALL BE GALVANIZED HD STEEL BEAM RAIL.
 - BRIDGE APPROACH RAIL HEIGHT SHALL BE TRANSITIONED TO NORMAL ROADWAY RAIL HEIGHT IN 25'.
 - FOR BRIDGE RAILING, THE TRANSITION POST SHALL HAVE AN OFFSET BLOCK AND BE LOCATED AS CLOSE AS POSSIBLE TO THE MID-POINT BETWEEN THE BRIDGE END POST AND APPROACH POST I.
 - APPROACH RAILING SHALL BE GALVANIZED HD STEEL BEAM FOR AT LEAST 25' FROM THE ENDS OF THE BRIDGE.

NOTES

- SPLICES SHALL LAP IN DIRECTION OF TRAFFIC FLOW.
- NEW BRIDGE RAILING POSTS SHALL BE SET NORMAL TO GRADE.
- ALL WELDING SHALL CONFORM TO THE PROVISIONS OF SUBSECTION 506.10
- LOCATION OF EXISTING ANCHOR BOLTS TO BE VERIFIED IN THE FIELD BY THE CONTRACTOR PRIOR TO ORDERING BRIDGE POSTS.
- SEE VAOT STANDARD SHEET G-1 FOR DELINEATION DETAILS AND PLACEMENT.
- ERECT DELINEATORS ON EVERY FIFTH POST OR APPROXIMATELY 29.5' APART. PAYMENT SHALL BE INCIDENTAL TO OTHER ITEMS.



| | | | |
|--|---------------------------------|------------------------|-----------------------------|
| BRIDGE DETAIL SHEET NO. 6 | PROJECT NAME: BRADFORD - ORANGE | FILE NAME: p99b178.dgn | PLOT DATE: 28-MAY-2010 13:4 |
| | PROJECT NUMBER: STP 2213(I) | PROJECT LEADER: JLL | DRAWN BY: STANTEC |
| | DESIGNED BY: STANTEC | CHECKED BY: JLL | SHEET 79 OF 84 |