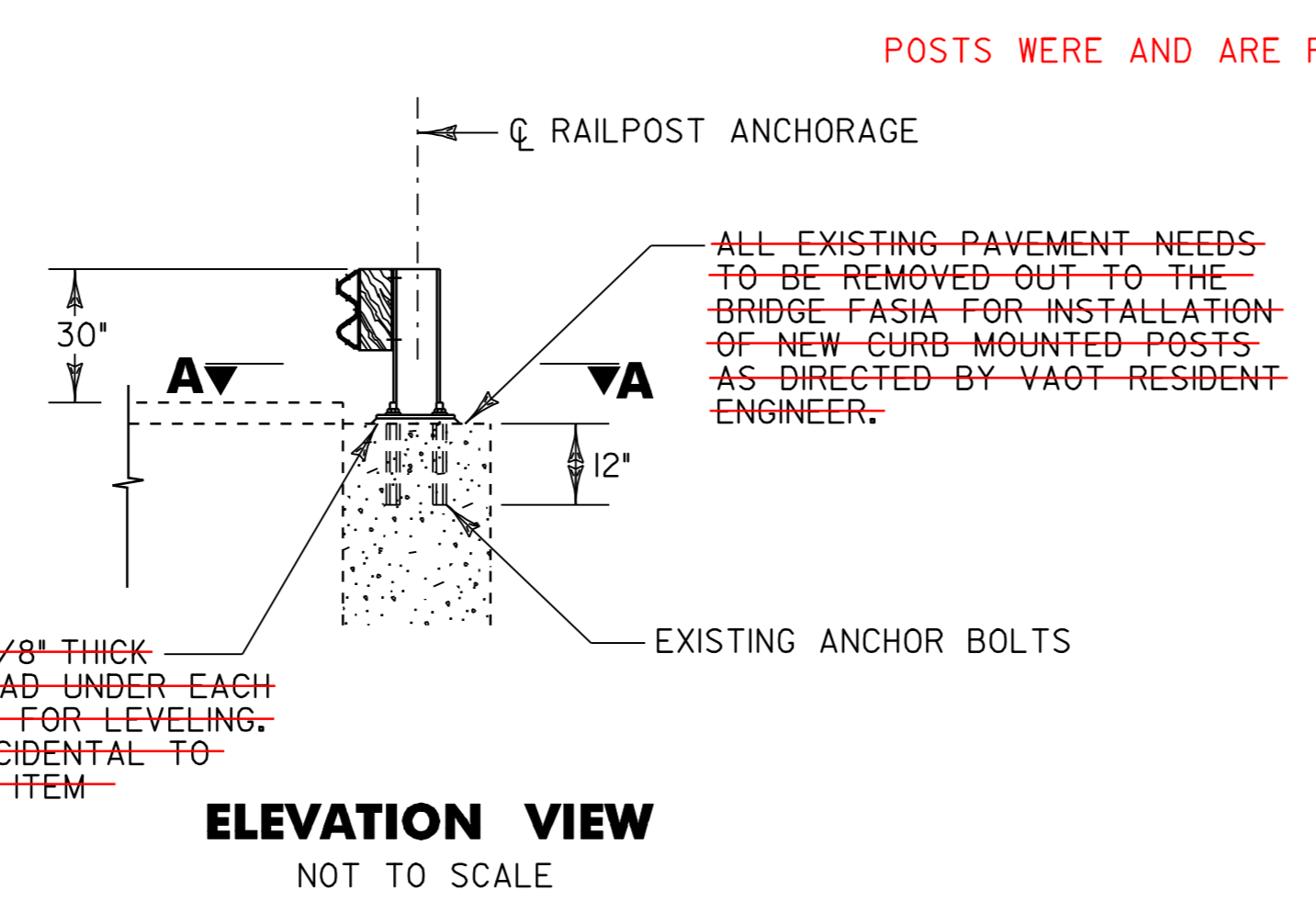
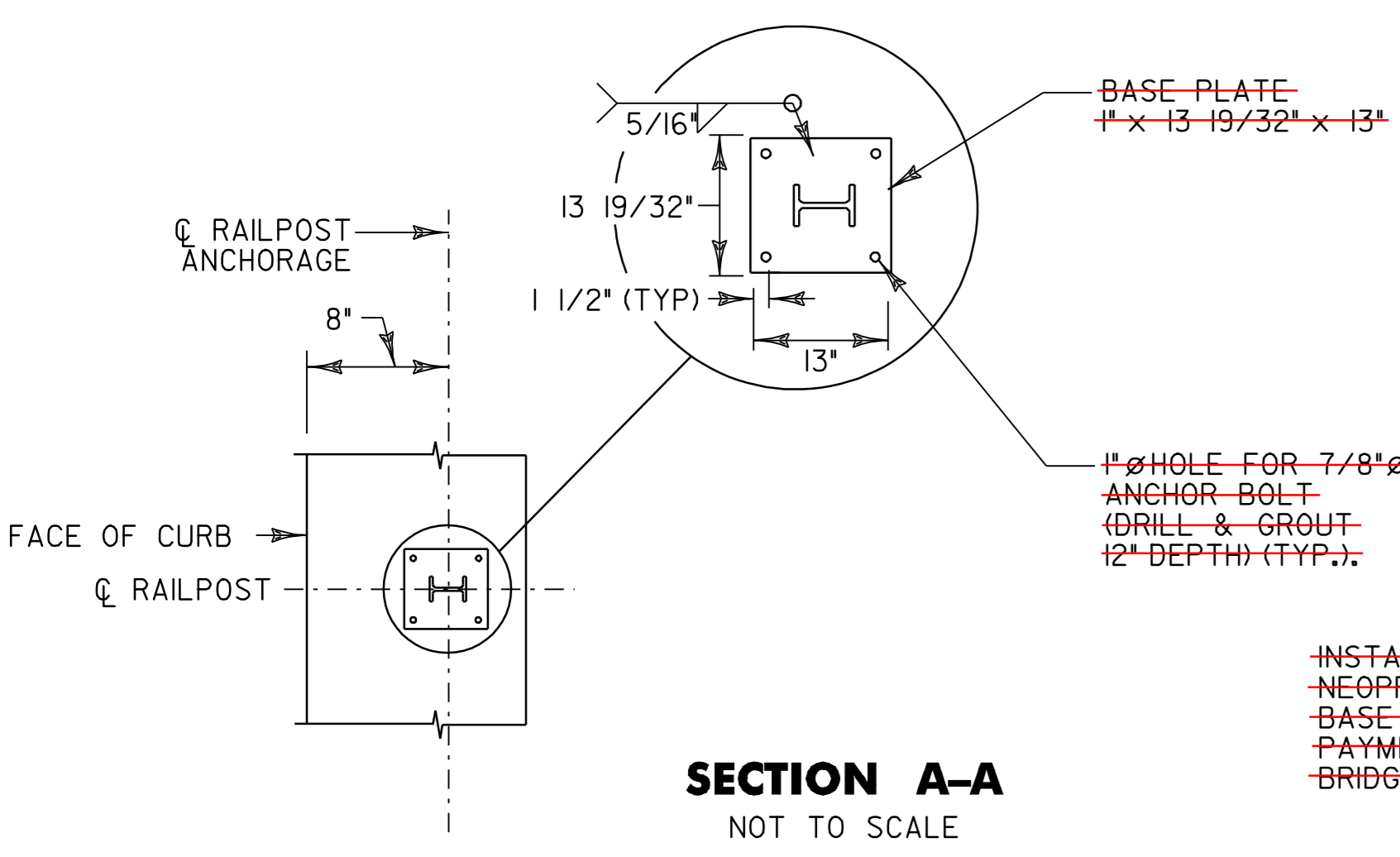


BR 19 TOPSHAM MM 4.444 = STA. 234+65



POSTS WERE AND ARE FACIA MOUNTED

NOTES

- SEE VAOT STANDARDS G-1 AND G-1d FOR ADDITIONAL DETAILS.
- ALL HEAVY DUTY STEEL BEAM BRIDGE RAIL, OFFSET BLOCKS AND RELATED HARDWARE SHALL BE PAID FOR UNDER ITEM 525.60 BRIDGE RAILING REPAIR, TYPE III.
- BRIDGE RAIL SHALL BE GALVANIZED HD STEEL BEAM RAIL.
- BRIDGE APPROACH RAIL HEIGHT SHALL BE TRANSITIONED TO NORMAL ROADWAY RAIL HEIGHT IN 25'.
- FOR BRIDGE RAILING, THE TRANSITION POST SHALL HAVE AN OFFSET BLOCK AND BE LOCATED AS CLOSE AS POSSIBLE TO THE MID-POINT BETWEEN THE BRIDGE END POST AND APPROACH POST I.
- APPROACH RAILING SHALL BE GALVANIZED HD STEEL BEAM FOR AT LEAST 25' FROM THE ENDS OF THE BRIDGE.
- SPLICES SHALL LAP IN DIRECTION OF TRAFFIC FLOW.
- NEW BRIDGE RAILING POSTS SHALL BE SET NORMAL TO GRADE.
- ALL WELDING SHALL CONFORM TO THE PROVISIONS OF SUBSECTION 506.10
- LOCATION OF EXISTING ANCHOR BOLTS TO BE VERIFIED IN THE FIELD BY THE CONTRACTOR PRIOR TO ORDERING BRIDGE POSTS.
- SEE VAOT STANDARD SHEET G-1 FOR DELINEATION DETAILS AND PLACEMENT.
- ERECT DELINEATORS ON EVERY FIFTH POST OR APPROXIMATELY 29.5' APART. PAYMENT SHALL BE INCIDENTAL TO OTHER ITEMS.

**PROPOSED BRIDGE RAIL MOUNTING
DETAILS FOR BRIDGE BR 19**



BRIDGE DETAIL SHEET NO. 5	NOT TO SCALE	
	PROJECT NAME: BRADFORD - ORANGE	PROJECT NUMBER: STP 2213(I)
	FILE NAME: p99b178.dgn PROJECT LEADER: JLL DESIGNED BY: STANTEC IPARM FILE: z99b178bds5.i	PLOT DATE: 28-MAY-2010 13:4 DRAWN BY: STANTEC CHECKED BY: JLL SHEET 78 OF 84