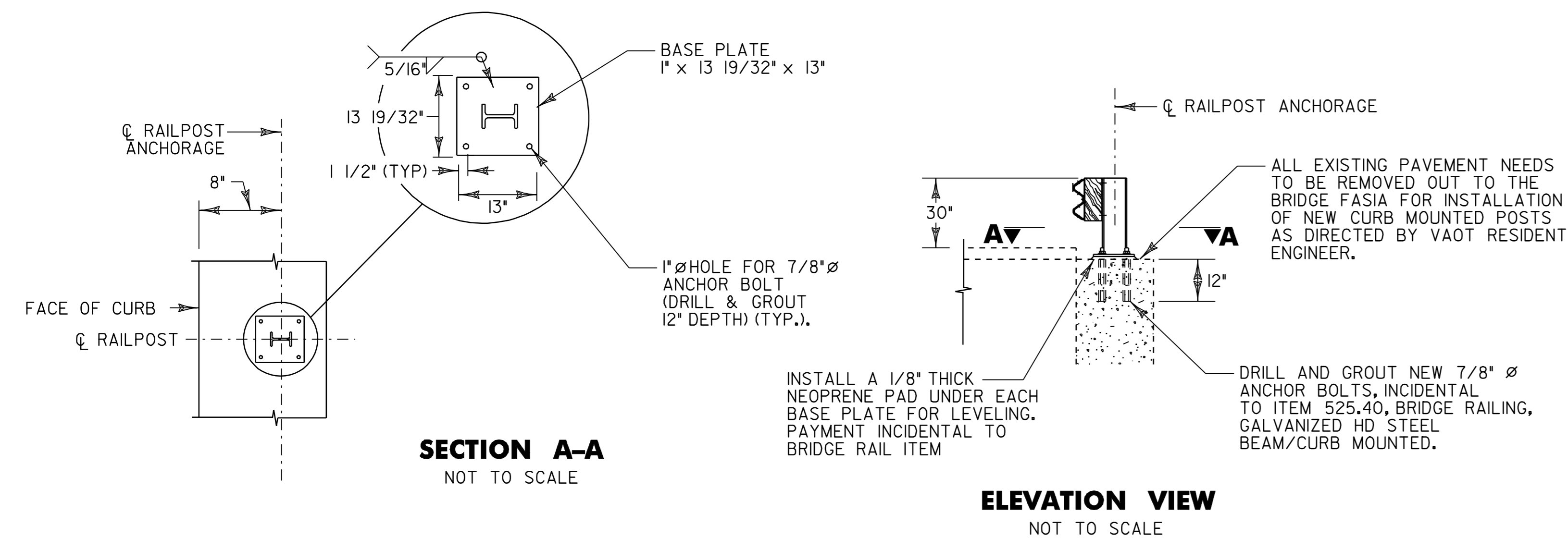


BR 11 BRIDGE POST DETAIL (LEFT SIDE ONLY)

CORINTH STA. 120+76.5 TO 121+01.5, LT

NOTES

1. LOCATION OF EXISTING ANCHOR BOLTS TO BE VERIFIED IN THE FIELD BY THE CONTRACTOR PRIOR TO ORDERING BRIDGE POSTS.
2. POSTS SHALL BE SHOP CUT AND DRILLED PRIOR TO GALVANIZING.
3. SEE VAOT STANDARD SHEETS G-I, G-Id, AND SB-R6-82 FOR ADDITIONAL DETAILS.
4. ALL HEAVY DUTY STEEL BEAM BRIDGE RAIL, OFFSET BLOCKS AND RELATED HARDWARE SHALL BE PAID FOR UNDER ITEM 525.60 BRIDGE RAILING REPAIR, TYPE III.
5. BRIDGE RAIL SHALL BE GALVANIZED HD STEEL BEAM RAIL.
6. BRIDGE APPROACH RAIL HEIGHT SHALL BE TRANSITIONED TO NORMAL ROADWAY RAIL HEIGHT IN 25'.
7. FOR BRIDGE RAILING, THE TRANSITION POST SHALL HAVE AN OFFSET BLOCK AND BE LOCATED AS CLOSE AS POSSIBLE TO THE MID-POINT BETWEEN THE BRIDGE END POST AND APPROACH POST I.
8. APPROACH RAILING SHALL BE GALVANIZED HD STEEL BEAM FOR AT LEAST 25' FROM THE ENDS OF THE BRIDGE.
9. SPLICES SHALL LAP IN DIRECTION OF TRAFFIC FLOW.
10. NEW BRIDGE RAILING POSTS SHALL BE SET NORMAL TO GRADE.
11. ALL WELDING SHALL CONFORM TO THE PROVISIONS OF SUBSECTION 506.10.
12. SEE VAOT STANDARD SHEET G-I FOR DELINEATION DETAILS AND PLACEMENT.
13. ERECT DELINEATORS ON EVERY FIFTH POST OR APPROXIMATELY 29.5' APART. PAYMENT SHALL BE INCIDENTAL TO OTHER ITEMS.



PROPOSED BRIDGE RAIL MOUNTING DETAILS FOR BRIDGE BR 11 (RIGHT SIDE ONLY)

CORINTH STA. 120+76.5 TO 121+01.5, RT

NOTES

1. SEE VAOT STANDARDS G-I AND G-Id FOR ADDITIONAL DETAILS.
2. ALL HEAVY DUTY STEEL BEAM BRIDGE RAIL, OFFSET BLOCKS AND RELATED HARDWARE SHALL BE PAID FOR UNDER THE ITEM 525.40 BRIDGE RAILING, GALVANIZED HD STEEL BEAM/CURB MOUNTED.
3. BRIDGE RAIL SHALL BE GALVANIZED HD STEEL BEAM RAIL.
4. BRIDGE APPROACH RAIL HEIGHT SHALL BE TRANSITIONED TO NORMAL ROADWAY RAIL HEIGHT IN 25'.
5. FOR BRIDGE RAILING, THE TRANSITION POST SHALL HAVE AN OFFSET BLOCK AND BE LOCATED AS CLOSE AS POSSIBLE TO THE MID-POINT BETWEEN THE BRIDGE END POST AND APPROACH POST I.
6. APPROACH RAILING SHALL BE GALVANIZED HD STEEL BEAM FOR AT LEAST 25' FROM THE ENDS OF THE BRIDGE.
7. SPLICES SHALL LAP IN DIRECTION OF TRAFFIC FLOW.
8. NEW BRIDGE RAILING POSTS SHALL BE SET NORMAL TO GRADE.
9. ALL WELDING SHALL CONFORM TO THE PROVISIONS OF SUBSECTION 506.10.
10. NEW ASTM A-449 7/8" DIAMETER ANCHOR BOLTS TO BE GROUTED IN PLACE SHALL BE FURNISHED WITH ONE NUT AND ONE WASHER. BOLTS, NUTS AND WASHERS SHALL BE INCIDENTAL TO ITEM 525.40.
11. GROUT NEW BOLTS WITH A TYPE IV MORTAR. DRILLING AND GROUTING NEW ANCHOR BOLTS SHALL BE INCIDENTAL TO ITEM 525.60.
12. A MINIMUM PULLOUT STRENGTH OF 70 kips SHALL BE ATTAINED ON ALL NEW BOLTS THAT ARE GROUTED IN PLACE. A SAMPLE GROUTED BOLT WILL BE TESTED BEFORE MATERIALS ARE APPROVED FOR USE, AND THEN RANDOM BOLTS WILL BE FIELD TESTED BY THE STATE OF VERMONT TO ENSURE THIS STRENGTH IS BEING ATTAINED. 48-HOURS ADVANCE NOTICE IS REQUIRED TO ALERT VAOT AS TO WHEN THE CONTRACTOR WILL BE READY FOR THIS TESTING.
13. SEE VAOT STANDARD SHEET G-I FOR DELINEATION DETAILS AND PLACEMENT.
14. ERECT DELINEATORS ON EVERY FIFTH POST OR APPROXIMATELY 29.5' APART. PAYMENT SHALL BE INCIDENTAL TO OTHER ITEMS.

NOT TO SCALE

**BRIDGE
DETAIL SHEET
NO. 2B**



PROJECT NAME: BRADFORD - ORANGE	FILE NAME: p99b178.dgn	PLOT DATE: 28-MAY-2010 13:4
PROJECT NUMBER: STP 2213(I)	PROJECT LEADER: JLL	DRAWN BY: STANTEC
	DESIGNED BY: STANTEC	CHECKED BY: JLL
	IPARM FILE: z99b178bds2B.i	SHEET 75 OF 84