

525.60 BRIDGE RAILING REPAIR, TYPE III
~~STA. 271+35.13 TO 271+78.88, RT~~
~~STA. 271+47.63 TO 271+91.38, LT~~
 STA. 273+78.63 TO 273+97.38, LT
 STA. 273+78.63 TO 273+97.38, RT

~~601.0915 18" CPEP ELIMINATED~~
~~STA. 275+10, RT~~
~~(SEE GUARD RAIL DETAIL SHEET)~~

604.412, 604.415, OR 604.418 REHAB.
 DI'S, CB'S OR MH'S, CLASS I, ~~++~~ OR ~~+++~~
 STA. 275+30, ~~LT-RT~~
 STA. 278+76, RT
 268+84.1 LT
 269+63.8 LT
 270+48.4 LT

621.20 STEEL BEAM GUARDRAIL, GALVANIZED
 STA. 269+82 TO 271+03.88, RT
 +25 STA. 272+22.63 TO 272+60.13, LT+50
 STA. 274+22.38 TO 274+72.38, RT
 STA. 274+28.63 TO 278+53.63, LT
 25 +50

621.205 STEEL BEAM GUARDRAIL, GALVANIZED W/8 FEET POSTS
 STA. 278+53.63 TO 280+00, LT

621.21 HD STEEL BEAM GUARDRAIL, GALVANIZED
 STA. 271+03.88 TO 271+35.13, RT
 STA. 271+23 TO 271+47.63, LT
 STA. 271+78.88 TO 271+94, RT
 STA. 271+91.38 TO 272+22.63, LT
 STA. 273+55 TO 273+78.63, LT
 STA. 273+70 TO 273+78.63, RT
 STA. 273+97.38 TO 274+22.38, RT
 STA. 273+97.38 TO 274+28.63, LT
 271+35.13 TO 271+78.88 RT
 271+47.63 TO 271+91.38 LT

621.50 MANUFACTURED TERMINAL SECTION, FLARED
 STA. ~~272+60.13 TO 272+97.63, LT~~
 STA. 274+72.38 TO 275+09.88, RT

621.60 ANCHOR FOR STEEL BEAM RAIL
 STA. 269+82, RT 270+00 RT
 STA. 271+23, LT 269+50 RT
 STA. ~~271+94, RT~~ 273+51.63 RT
 STA. 273+55, LT 272+00 RT
 STA. ~~273+70, RT~~ 272+50 LT

621.80 REMOVAL AND DISPOSAL OF GUARDRAIL
 STA. 269+97 TO 271+93, RT
 STA. 271+37 TO 272+64, LT
 STA. 273+58 TO 280+00, LT
 STA. 273+75 TO 274+31, RT

646.20
~~646.402 DURABLE 4 INCH WHITE LINE, THERMOPLASTIC~~
 STA. 267+50 TO 280+00, SOLID LT & RT
 STA. 272+23, DOUBLE SOLID RT (T.H. 36)

646.21
~~646.412 DURABLE 4 INCH YELLOW LINE, THERMOPLASTIC~~
 STA. 267+50 TO 280+00, SOLID LT & RT
 STA. 272+23, DOUBLE SOLID RT (T.H. 36)

646.26
~~646.482 DURABLE 24 INCH STOP BAR, THERMOPLASTIC~~
 STA. 272+23, RT (T.H. 36)

646.492 DURABLE LETTER OR SYMBOL, THERMOPLASTIC
 STA. 272+23, RT - "STOP"

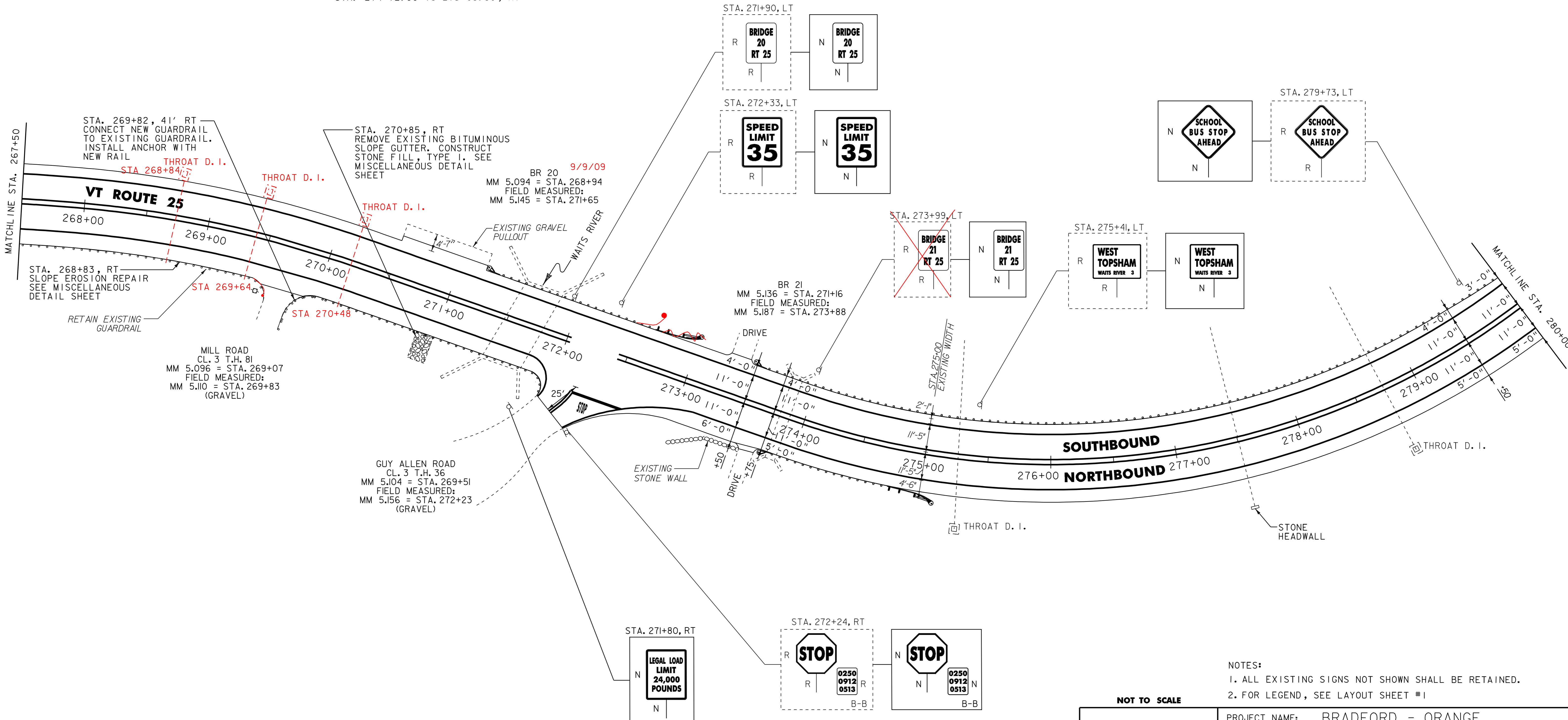
646.602 TEMPORARY 4 INCH WHITE LINE, PAINT
 STA. 267+50 TO 280+00, SOLID LT & RT
 STA. 272+23, DOUBLE SOLID RT (T.H. 36)

646.612 TEMPORARY 4 INCH YELLOW LINE, PAINT
 STA. 267+50 TO 280+00, SOLID LT & RT
 STA. 272+23, DOUBLE SOLID RT (T.H. 36)

646.682 TEMPORARY 24 INCH STOP BAR, PAINT
 STA. 272+23, RT (T.H. 36)

~~646.692 TEMPORARY LETTER OR SYMBOL, PAINT~~
~~STA. 272+23, RT - "STOP"~~

675.50 REMOVING SIGNS
 AS SHOWN - 7



NOTES:
 1. ALL EXISTING SIGNS NOT SHOWN SHALL BE RETAINED.
 2. FOR LEGEND, SEE LAYOUT SHEET #1

NOT TO SCALE

PROJECT LAYOUT SHEET #34

PROJECT NAME: BRADFORD - ORANGE	FILE NAME: p99b178.dgn	PLOT DATE: 28-MAY-2010 13:4
PROJECT NUMBER: S1P_2213(I)	PROJECT LEADER: JLL	DRAWN BY: STANTEC
	DESIGNED BY: STANTEC	CHECKED BY: JLL
	IPARM FILE: p99b178i34.i	SHEET 51 OF 84

