

525.60 BRIDGE RAILING REPAIR, TYPE III
 CORINTH STA. 204+94.13 TO 205+37.88, RT
 CORINTH STA. 205+01.13 TO 205+44.88, LT

~~617.12 RELOCATE MAILBOX, MULTIPLE SUPPORT
 CORINTH STA. 206+32, RT~~

621.20 STEEL BEAM GUARDRAIL, GALVANIZED
 CORINTH STA. 204+32.38 TO 204+69.88, LT
 CORINTH STA. 204+37.88 TO 204+62.88, RT
 CORINTH STA. 205+69.13 TO 206+19.13, RT
 CORINTH STA. 205+76.1 TO 208+01.1, LT
 TOPSHAM STA. 2+50 TO 3+50, LT

621.21 HD STEEL BEAM GUARDRAIL, GALVANIZED
 CORINTH STA. 204+62.88 TO 204+94.13, RT
 CORINTH STA. 204+69.88 TO 205+01.13, LT
 CORINTH STA. 205+37.88 TO 205+69.13, RT
 CORINTH STA. 205+44.88 TO 205+76.1, LT

18.75
 621.50 MANUFACTURED TERMINAL SECTION, FLARED
 CORINTH STA. 204+00.38 TO 204+37.88, RT
 CORINTH STA. 208+01.1 TO 208+38.6, LT
 TOPSHAM STA. 2+12.5 TO 2+50, LT

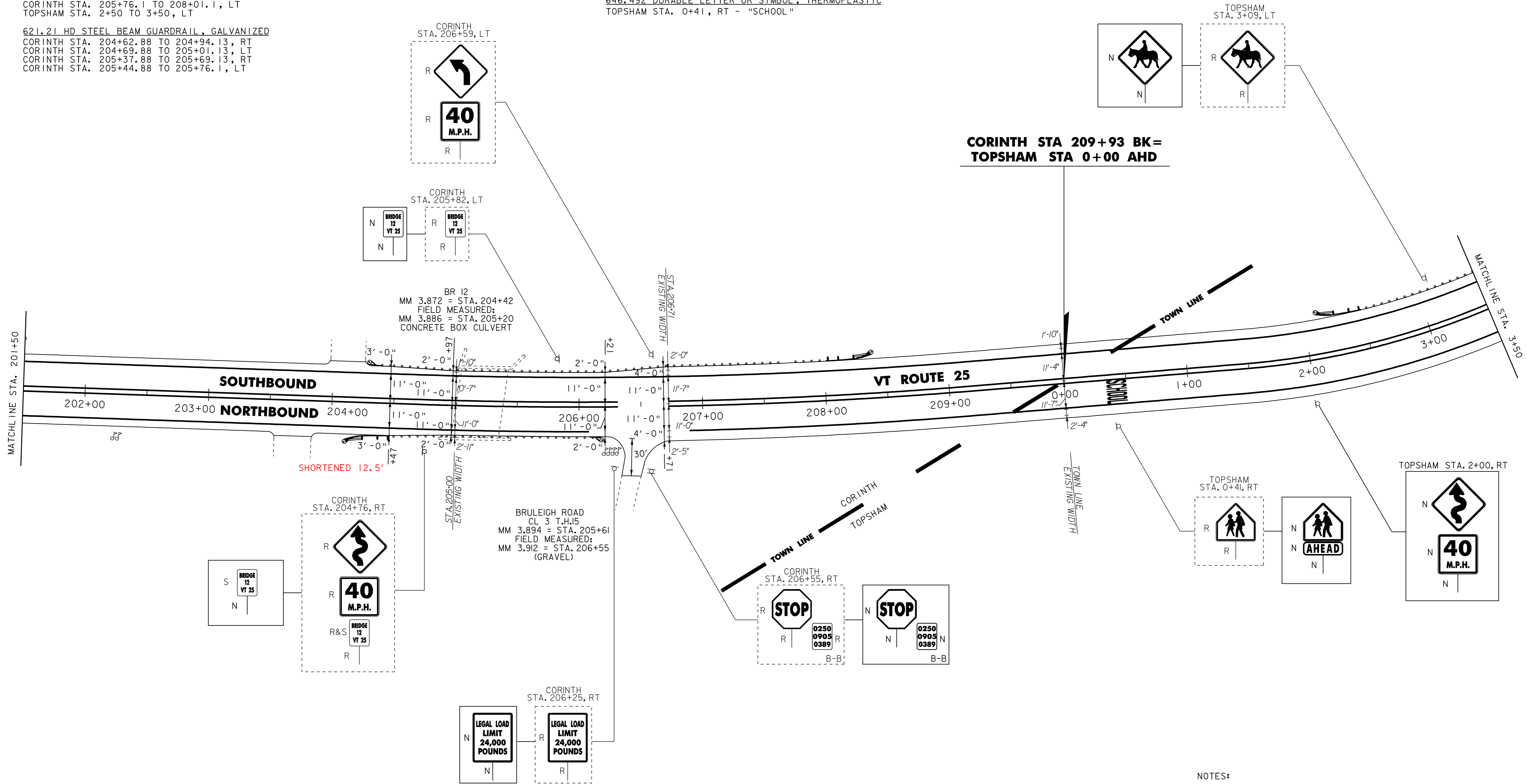
621.60 ANCHOR FOR STEEL BEAM RAIL
 CORINTH STA. 204+32.38, LT
 CORINTH STA. 206+19.13, RT

621.80 REMOVAL AND DISPOSAL OF GUARDRAIL
 CORINTH STA. 204+26 TO 206+02, LT
 CORINTH STA. 204+57 TO 206+30, RT
 646.20
~~646.402 DURABLE 4 INCH WHITE LINE, THERMOPLASTIC~~
 CORINTH STA. 201+50 TO TOPSHAM STA 3+50, SOLID LT & RT
 646.21
~~646.412 DURABLE 4 INCH YELLOW LINE, THERMOPLASTIC~~
 CORINTH STA. 201+50 TO TOPSHAM STA 3+50, SOLID LT & RT
 646.492 DURABLE LETTER OR SYMBOL, THERMOPLASTIC
 TOPSHAM STA. 0+41, RT - "SCHOOL"

646.602 TEMPORARY 4 INCH WHITE LINE, PAINT
 CORINTH STA. 201+50 TO TOPSHAM STA 3+50, SOLID LT & RT
 646.612 TEMPORARY 4 INCH YELLOW LINE, PAINT
 CORINTH STA. 201+50 TO TOPSHAM STA 3+50, SOLID LT & RT
~~646.692 TEMPORARY LETTER OR SYMBOL, PAINT
 TOPSHAM STA. 0+41, RT - "SCHOOL"~~

675.50 REMOVING SIGNS
 AS SHOWN - 11

675.60 ERECTING SALVAGED SIGNS
 AS SHOWN - 1



- NOTES:
 1. ALL EXISTING SIGNS NOT SHOWN SHALL BE RETAINED.
 2. FOR LEGEND, SEE LAYOUT SHEET #1

NOT TO SCALE

PROJECT LAYOUT SHEET #17

PROJECT NAME: BRADFORD - ORANGE
 PROJECT NUMBER: STP 2213(I)
 FILE NAME: p99b178.dgn
 PROJECT LEADER: JLL
 DESIGNED BY: STANTEC
 IPARM FILE: p99b178i17.i

PLOT DATE: 28-MAY-2010 13:4
 DRAWN BY: STANTEC
 CHECKED BY: JLL
 SHEET 34 OF 84

