

TEMPORARY & DURABLE 100 mm WHITE LINE
 STA. I+400.0 TO I+820.0, SOLID LT. & RT.
 (WITH EDGELINE BREAKS FOR JOHN PUTNAM
 MEMORIAL DRIVE & CADY HILL ROAD)
 STA. I+514.0, SOLID LT. (JOHN PUTNAM
 MEMORIAL DRIVE EDGELINES)

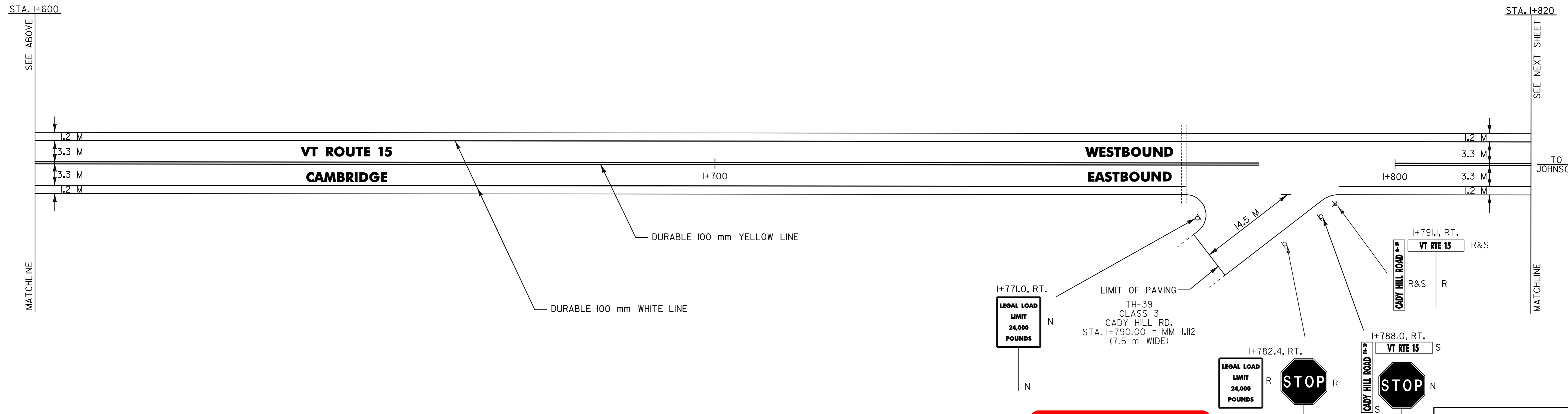
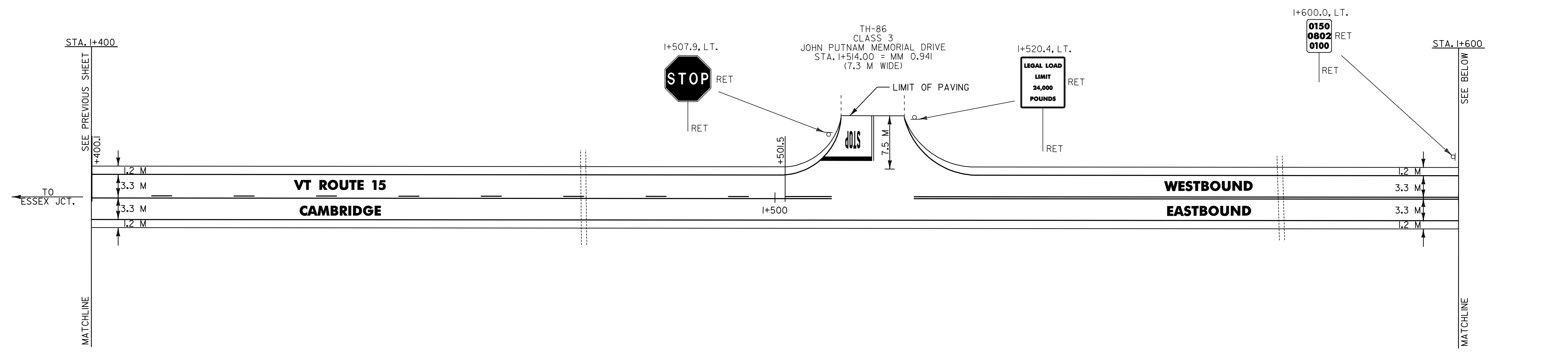
TEMPORARY & DURABLE 100 mm YELLOW LINE
 STA. I+400.0 TO I+400.1, DASHED CENTERLINE
 STA. I+400.1 TO I+501.5, DASHED LT./SOLID RT.
 STA. I+501.5 TO I+820.0, SOLID LT. & RT.
 (WITH CENTERLINE BREAKS FOR JOHN PUTNAM
 MEMORIAL DRIVE & CADY HILL ROAD)
 STA. I+514.0, DOUBLE SOLID LT. (JOHN PUTNAM
 MEMORIAL DRIVE CENTERLINE)

TEMPORARY & DURABLE 600 mm STOP BAR
 STA. I+510.7, LT.
 ERECTING SALVAGED SIGNS
 AS SHOWN - 2

TEMPORARY & DURABLE LETTER OR SYMBOL
 STA. I+510.7, LT. - 'STOP'

REMOVING SIGNS
 AS SHOWN - 4

DITCH CLEANING
 STA. I+400.0 TO I+820.0, RT. (SITE 7)
 (FOR DETAILS, SEE SHEET 6)



**ARCHIVED
IN DPR**



- NOTES: 1) ALL DIMENSIONS IN MILLIMETERS EXCEPT WHERE OTHERWISE INDICATED.
 2) FOR ANY TOWN HIGHWAY OR STREET DETAILS, SEE VTrans STANDARD E-193M.
 3) EW = EXISTING ROADWAY WIDTH

LAYOUT SHEET #18

PROJECT NAME: UNDERHILL - CAMBRIDGE	FILE NAME: Zpqve299bl76/pbl76.dgn	PLOT DATE: 26-JAN-2006 11:0
PROJECT NUMBER: STP 2212(1)S	PROJECT LEADER: JLL	DRAWN BY: D-H
DESIGNED BY: D-H	CHECKED BY:	
IPARM FILE NAME: pbl76118.i		SHEET 27 OF 36