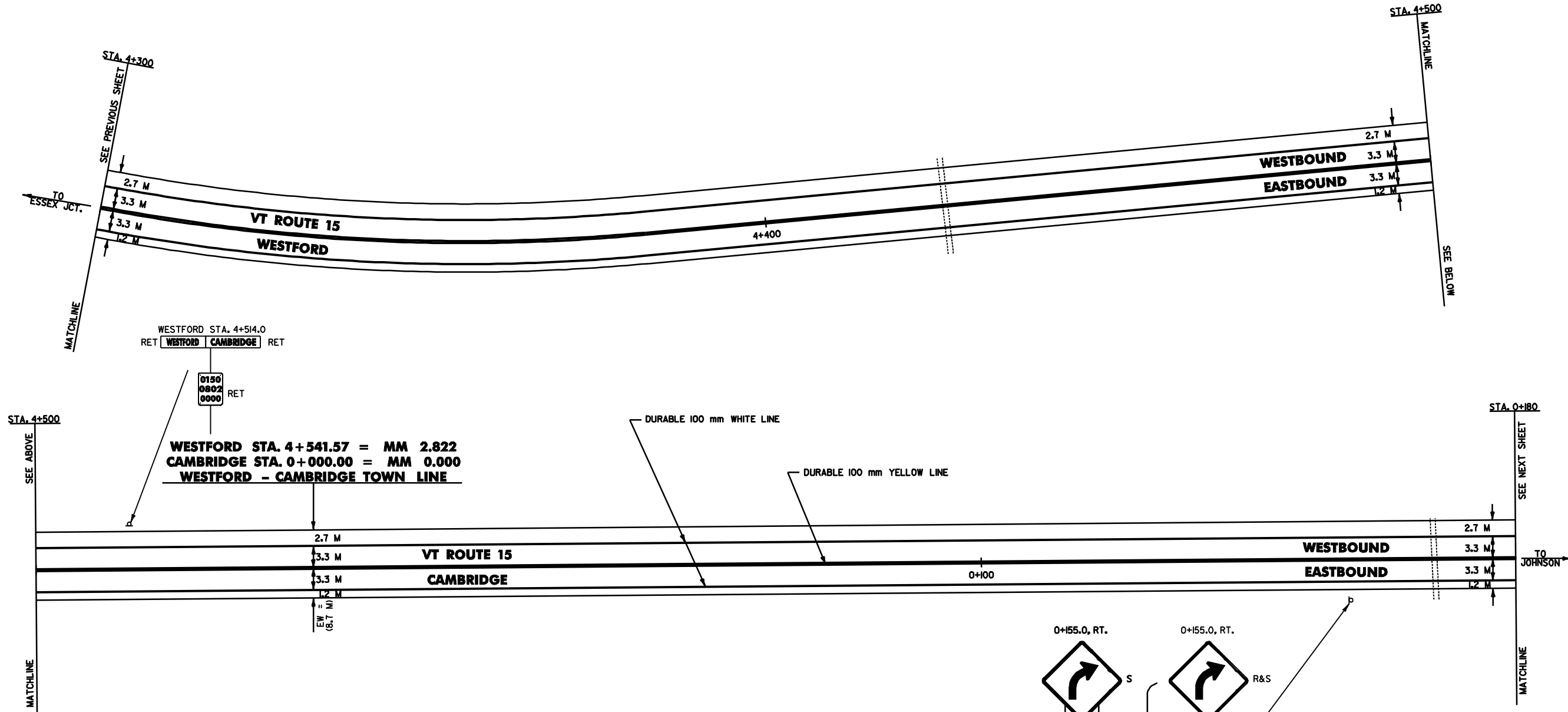


TEMPORARY & DURABLE 100 mm WHITE LINE
 WESTFORD STA. 4+300.0 TO 4+541.57, SOLID LT. & RT.
 CAMBRIDGE STA. 0+000.0 TO 0+180.0, SOLID LT. & RT.

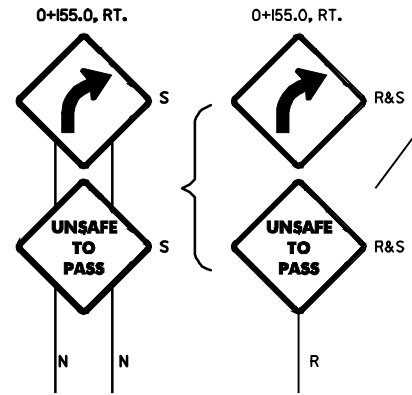
TEMPORARY & DURABLE 100 mm YELLOW LINE
 WESTFORD STA. 4+300.0 TO 4+541.57, SOLID LT. & RT.
 CAMBRIDGE STA. 0+000.0 TO 0+180.0, SOLID LT. & RT.

REMOVING SIGNS
 AS SHOWN - 2

ERECTING SALVAGED SIGNS
 AS SHOWN - 2



WESTFORD STA. 4+514.0
 RET WESTFORD CAMBRIDGE RET
 0150
 0802
 0000 RET
 WESTFORD STA. 4+541.57 = MM 2.822
 CAMBRIDGE STA. 0+000.00 = MM 0.000
 WESTFORD - CAMBRIDGE TOWN LINE



**ARCHIVED
 IN DPR**



- NOTES: 1) ALL DIMENSIONS IN MILLIMETERS EXCEPT WHERE OTHERWISE INDICATED.
 2) FOR ANY TOWN HIGHWAY OR STREET DETAILS, SEE VTrans STANDARD E-193M.
 3) EW = EXISTING ROADWAY WIDTH

LAYOUT SHEET #14	PROJECT NAME: UNDERHILL - CAMBRIDGE	PLOT DATE: 26-JAN-2006 11:00
	PROJECT NUMBER: SIP_2212(1)S	DRAWN BY: D-H
	FILE NAME: Z:\pva\99b\16\qb176.dgn	CHECKED BY:
	DESIGNED BY: D-H	SHEET 23 OF 36