

TEMPORARY & DURABLE 100 mm WHITE LINE  
 STA. 0+680.0 TO 1+100.0, SOLID LT. & RT.

TEMPORARY & DURABLE 100 mm YELLOW LINE  
 STA. 0+680.0 TO 0+853.0, SOLID LT./DASHED RT.  
 STA. 0+853.0 TO 0+981.7, DASHED CENTERLINE  
 STA. 0+981.7 TO 1+100.0, DASHED LT./SOLID RT.

MANUFACTURED TERMINAL SECTION (FLARED)  
 STA. 0+745.9 TO 0+757.3, RT.  
 STA. 0+802.9 TO 0+814.3, LT.

STEEL BEAM GUARD RAIL W/2.4 METER POSTS (MOD.)  
 STA. 0+764.9 TO 0+772.5, LT.  
 STA. 0+799.1 TO 0+802.9, LT.  
 STA. 0+799.1 TO 0+814.3, RT.  
 STA. 0+757.3 TO 0+772.5, RT.

REMOVAL AND DISPOSAL OF GUARD RAIL  
 STA. 0+745.0 TO 0+806.0, RT.  
 STA. 0+767.0 TO 0+812.0, LT.

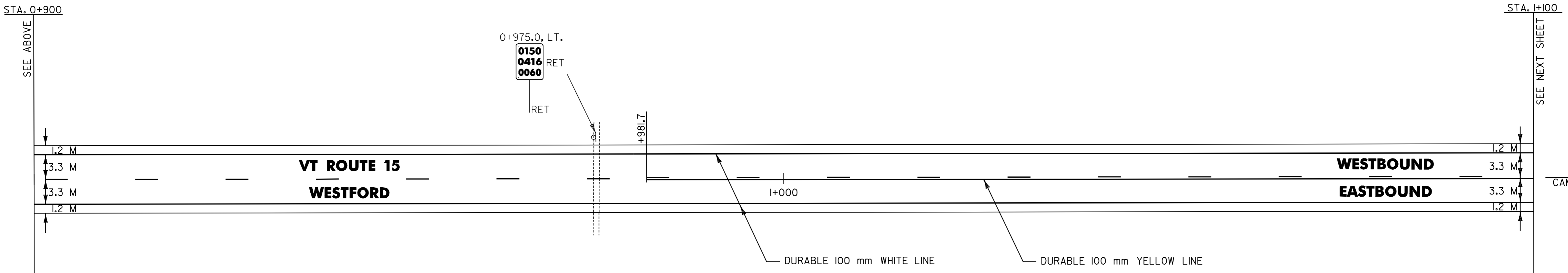
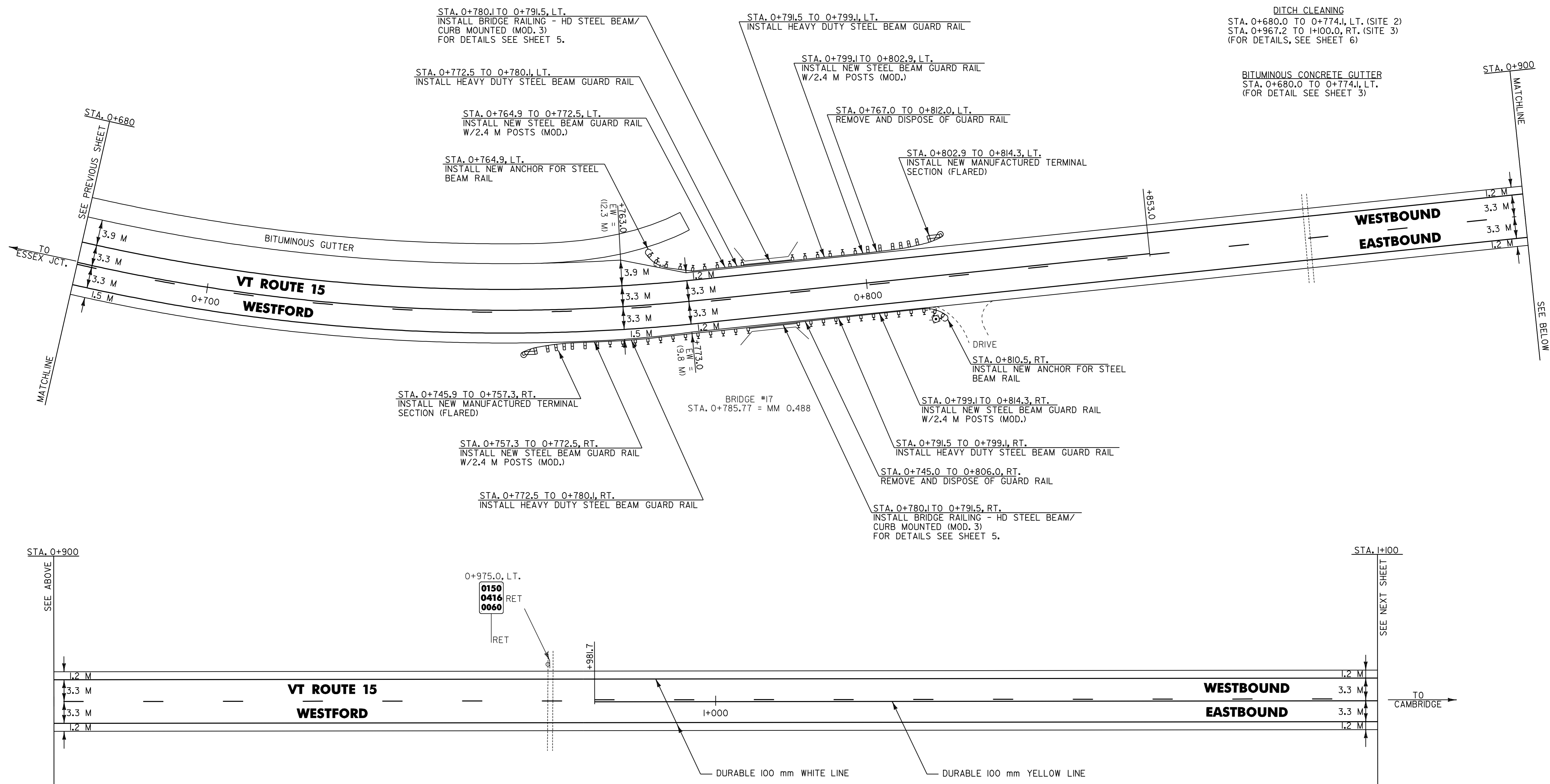
ANCHOR FOR STEEL BEAM RAIL  
 STA. 0+764.9, LT.  
 STA. 0+810.5, RT.

BRIDGE RAILING - H.D. STEEL BEAM/CURB MOUNTED (MOD. 3)  
 STA. 0+780.1 TO 0+791.5, LT. & RT.

HEAVY DUTY STEEL BEAM GUARD RAIL  
 STA. 0+772.5 TO 0+780.1, LT. & RT.  
 STA. 0+791.5 TO 0+799.1, LT. & RT.

DITCH CLEANING  
 STA. 0+680.0 TO 0+774.1, LT. (SITE 2)  
 STA. 0+967.2 TO 1+100.0, RT. (SITE 3)  
 (FOR DETAILS, SEE SHEET 6)

BITUMINOUS CONCRETE GUTTER  
 STA. 0+680.0 TO 0+774.1, LT.  
 (FOR DETAIL SEE SHEET 3)



**ARCHIVED  
 IN DPR**



- NOTES: 1) ALL DIMENSIONS IN MILLIMETERS EXCEPT WHERE OTHERWISE INDICATED.  
 2) FOR ANY TOWN HIGHWAY OR STREET DETAILS, SEE VTRANS STANDARD E-193M.  
 3) EW = EXISTING ROADWAY WIDTH

**LAYOUT SHEET #5**

PROJECT NAME: UNDERHILL - CAMBRIDGE	PLOT DATE: 26-JAN-2006 11:00
PROJECT NUMBER: STP_2212(1)S	DRAWN BY: D-H
FILE NAME: Z:\pave\299b\176\pbl176.dgn	CHECKED BY:
DESIGNED BY: D-H	SHEET 14 OF 36
IPARM FILE NAME: pbl176.i	