

TEMPORARY & DURABLE 100 mm WHITE LINE
 STA. 0+260.0 TO 0+680.0, SOLID LT. & RT.
 (WITH EDGELINE BREAKS FOR COWIE ROAD)

TEMPORARY & DURABLE 100 mm YELLOW LINE
 STA. 0+280.0 TO 0+627.6, SOLID LT. & RT.
 (WITH CENTERLINE BREAK FOR COWIE ROAD)
 STA. 0+627.6 TO 0+680.0, SOLID LT./DASHED RT.

REMOVING SIGNS
 AS SHOWN - 4

MANUFACTURED TERMINAL SECTION (FLARED)
 STA. 0+312.7 TO 0+324.1, RT.

STEEL BEAM GUARD RAIL W/2.4 METER POSTS (MOD.)
 STA. 0+260.0 TO 0+312.7, RT.

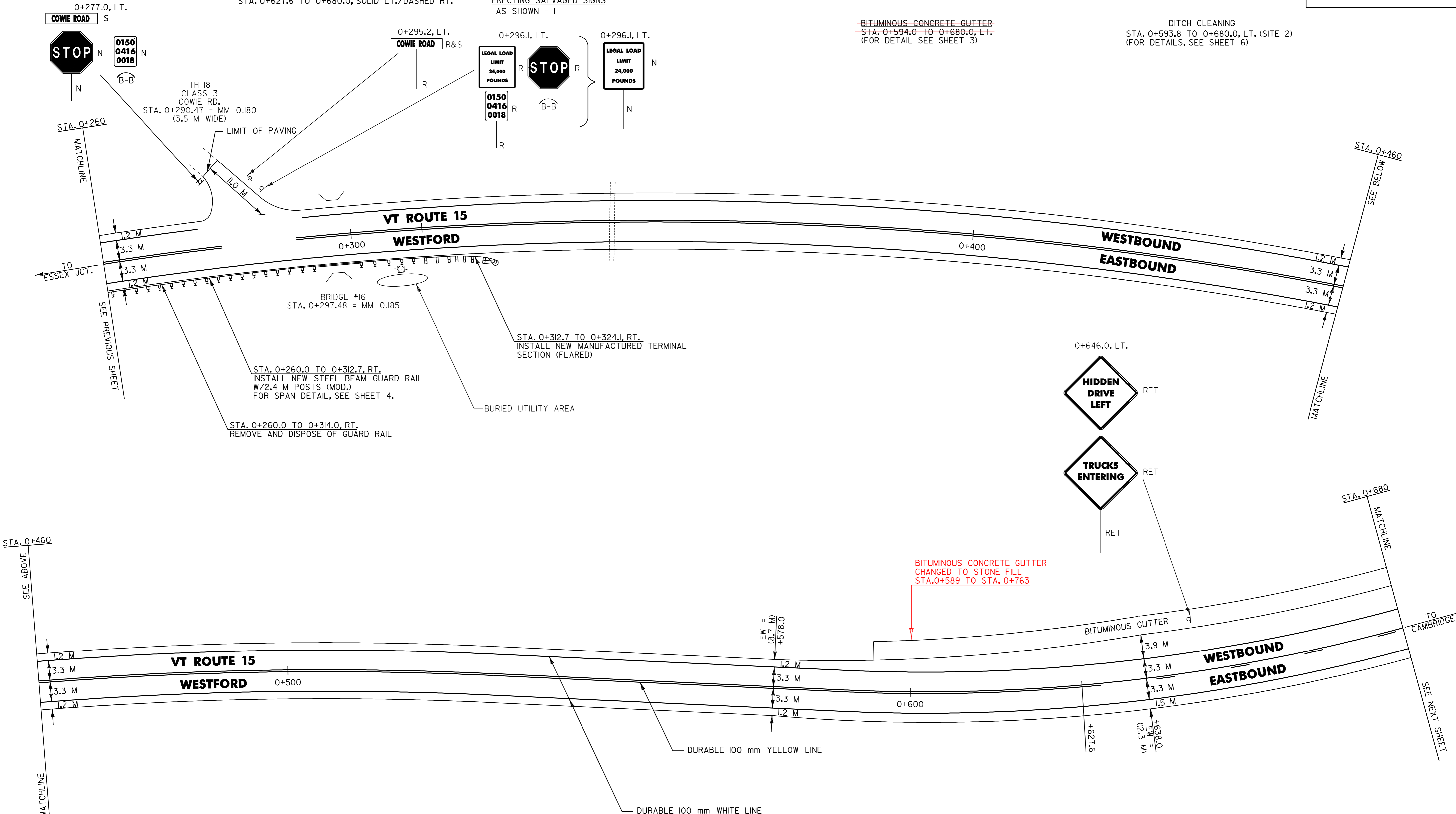
REMOVAL AND DISPOSAL OF GUARD RAIL
 STA. 0+260.0 TO 0+314.0, RT.



ERECTING SALVAGED SIGNS
 AS SHOWN - 1

~~BITUMINOUS CONCRETE GUTTER~~
~~STA. 0+594.0 TO 0+680.0, LT.~~
 (FOR DETAIL SEE SHEET 3)

DITCH CLEANING
 STA. 0+593.8 TO 0+680.0, LT. (SITE 2)
 (FOR DETAILS, SEE SHEET 6)



**ARCHIVED
 IN DPR**



- NOTES: 1) ALL DIMENSIONS IN MILLIMETERS EXCEPT WHERE OTHERWISE INDICATED.
 2) FOR ANY TOWN HIGHWAY OR STREET DETAILS, SEE VTTRANS STANDARD E-193M.
 3) EW = EXISTING ROADWAY WIDTH

LAYOUT SHEET #4

PROJECT NAME: UNDERHILL - CAMBRIDGE	FILE NAME: Zpqve299bl76Zpb176.dgn	PLOT DATE: 26-JAN-2006 11:0
PROJECT NUMBER: STP_2212(1)S	PROJECT LEADER: JLL	DRAWN BY: D-H
DESIGNED BY: D-H	CHECKED BY:	
IPARM FILE NAME: pb17614.i		SHEET 13 OF 36