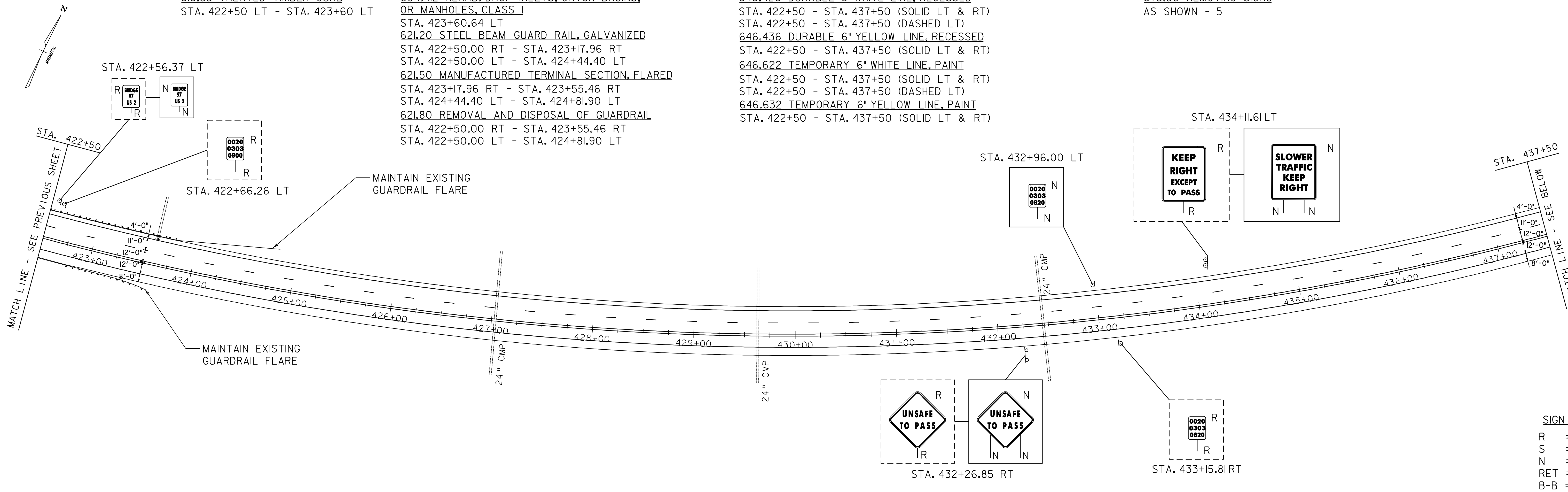


616.35 TREATED TIMBER CURB  
STA. 422+50 LT - STA. 423+60 LT

604.412 REHAB. DROP INLETS, CATCH BASINS,  
OR MANHOLES, CLASS I  
STA. 423+60.64 LT  
621.20 STEEL BEAM GUARD RAIL, GALVANIZED  
STA. 422+50.00 RT - STA. 423+17.96 RT  
STA. 422+50.00 LT - STA. 424+44.40 LT  
621.50 MANUFACTURED TERMINAL SECTION, FLARED  
STA. 423+17.96 RT - STA. 423+55.46 RT  
STA. 424+44.40 LT - STA. 424+81.90 LT  
621.80 REMOVAL AND DISPOSAL OF GUARDRAIL  
STA. 422+50.00 RT - STA. 423+55.46 RT  
STA. 422+50.00 LT - STA. 424+81.90 LT

646.426 DURABLE 6" WHITE LINE, RECESSED  
STA. 422+50 - STA. 437+50 (SOLID LT & RT)  
STA. 422+50 - STA. 437+50 (DASHED LT)  
646.436 DURABLE 6" YELLOW LINE, RECESSED  
STA. 422+50 - STA. 437+50 (SOLID LT & RT)  
646.622 TEMPORARY 6" WHITE LINE, PAINT  
STA. 422+50 - STA. 437+50 (SOLID LT & RT)  
STA. 422+50 - STA. 437+50 (DASHED LT)  
646.632 TEMPORARY 6" YELLOW LINE, PAINT  
STA. 422+50 - STA. 437+50 (SOLID LT & RT)

675.50 REMOVING SIGNS  
AS SHOWN - 5

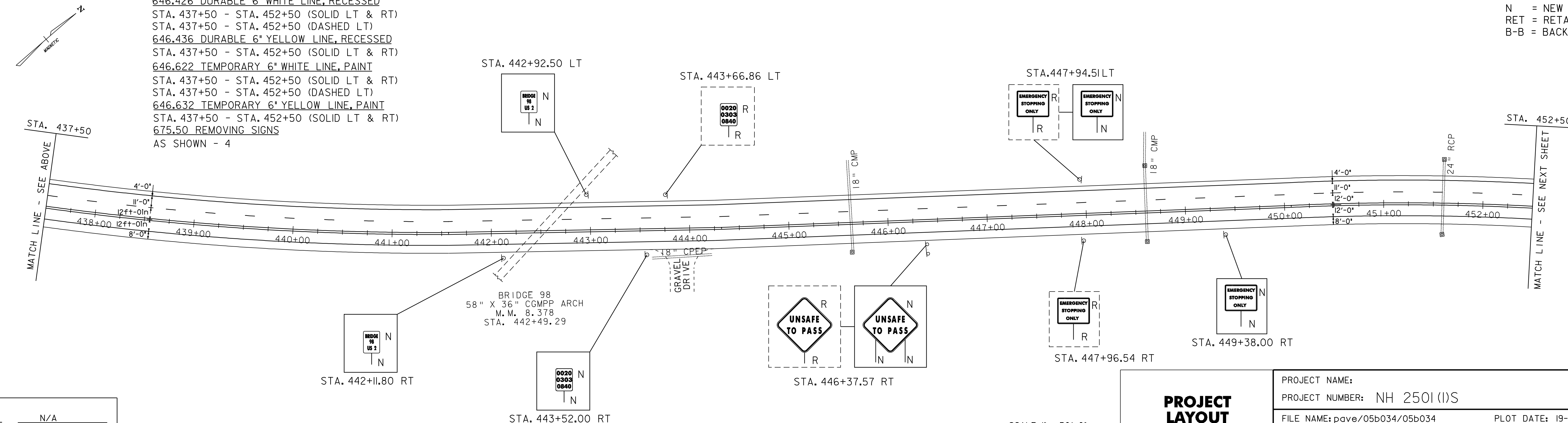


**SIGN LEGEND**  
R = REMOVE  
S = SALVAGE  
N = NEW  
RET = RETAIN  
B-B = BACK TO BACK

616.47 BITUMINOUS CONCRETE GUTTERS AND TRAFFIC ISLANDS

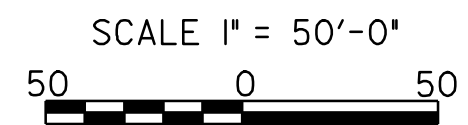
STA. 443+59 - STA. 444+24 RT  
646.426 DURABLE 6" WHITE LINE, RECESSED  
STA. 437+50 - STA. 452+50 (SOLID LT & RT)  
STA. 437+50 - STA. 452+50 (DASHED LT)  
646.436 DURABLE 6" YELLOW LINE, RECESSED  
STA. 437+50 - STA. 452+50 (SOLID LT & RT)  
646.622 TEMPORARY 6" WHITE LINE, PAINT  
STA. 437+50 - STA. 452+50 (SOLID LT & RT)  
STA. 437+50 - STA. 452+50 (DASHED LT)  
646.632 TEMPORARY 6" YELLOW LINE, PAINT  
STA. 437+50 - STA. 452+50 (SOLID LT & RT)  
675.50 REMOVING SIGNS  
AS SHOWN - 4

**SIGN LEGEND**  
R = REMOVE  
S = SALVAGE  
N = NEW  
RET = RETAIN  
B-B = BACK TO BACK



**DATUM**

VERTICAL	N/A
HORIZONTAL	N/A



**PROJECT LAYOUT SHEET 7**

PROJECT NAME:	PROJECT NUMBER: NH 2501(I)S
FILE NAME: pave/05b034/05b034	PLOT DATE: 19-JUN-2009 16:17
PROJECT LEADER: EPD	DRAWN BY: JAR
DESIGNED BY: JDA	CHECKED BY: EPD
PLOT FILE: 05b034p07.1	SHEET 39 OF 63