

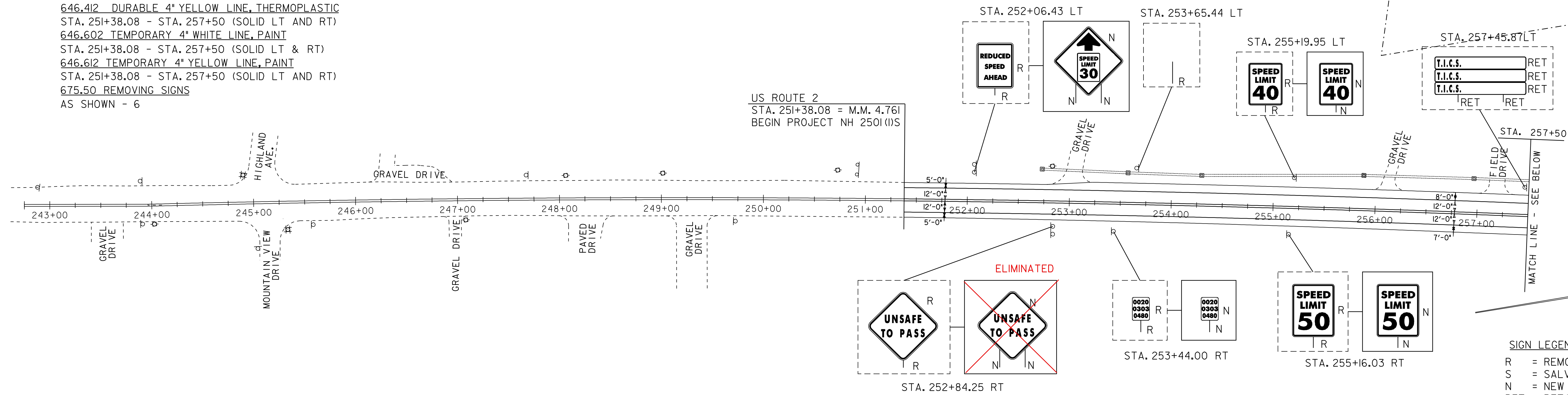
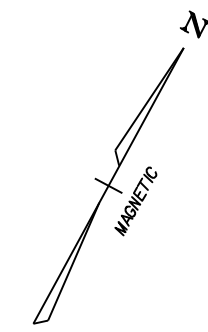
PROJECT EXTENDED TO 213+84 (MILL & FILL) AS PER C.O. #2

← 3754.08' (0.711 MILE)

616.47 BITUMINOUS CONCRETE GUTTERS AND TRAFFIC ISLANDS

STA. 252+77 - STA. 253+22 LT  
STA. 255+97 - STA. 256+28 LT  
STA. 257+01 - STA. 257+36 LT

646.402 DURABLE 4" WHITE LINE, THERMOPLASTIC  
STA. 251+38.08 - STA. 257+50 (SOLID LT & RT)  
646.412 DURABLE 4" YELLOW LINE, THERMOPLASTIC  
STA. 251+38.08 - STA. 257+50 (SOLID LT AND RT)  
646.602 TEMPORARY 4" WHITE LINE, PAINT  
STA. 251+38.08 - STA. 257+50 (SOLID LT & RT)  
646.612 TEMPORARY 4" YELLOW LINE, PAINT  
STA. 251+38.08 - STA. 257+50 (SOLID LT AND RT)  
675.50 REMOVING SIGNS  
AS SHOWN - 6



**SIGN LEGEND**  
R = REMOVE  
S = SALVAGE  
N = NEW  
RET = RETAIN  
B-B = BACK TO BACK

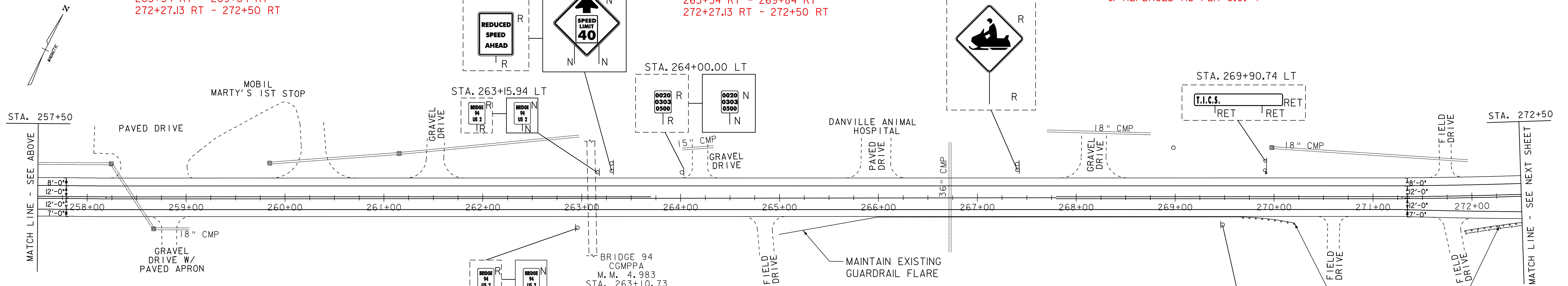
621.80 REMOVAL & DISPOSAL OF GUARD RAIL

265+34 RT - 269+84 RT  
272+27.13 RT - 272+50 RT

621.20 STEEL BEAM GUARD RAIL, GALV.

265+34 RT - 269+84 RT  
272+27.13 RT - 272+50 RT

STEEL BEAM GUARD RAIL REMOVED  
& REPLACED AS PER C.O. #1



**SIGN LEGEND**  
R = REMOVE  
S = SALVAGE  
N = NEW  
RET = RETAIN  
B-B = BACK TO BACK

616.47 BITUMINOUS CONCRETE GUTTERS AND TRAFFIC ISLANDS

STA. 258+24 - STA. 259+07 LT  
STA. 258+62 - STA. 259+05 RT  
STA. 259+87 - STA. 260+72 LT  
STA. 261+23 - STA. 261+80 LT  
STA. 264+02 - STA. 264+38 LT  
STA. 264+64 - STA. 265+06 RT  
STA. 265+67 - STA. 266+26 LT  
STA. 267+84 - STA. 268+51 LT  
STA. 270+44 - STA. 270+76 RT  
STA. 271+57 - STA. 271+90 LT  
STA. 271+60 - STA. 271+99 RT

621.50 MANUFACTURED TERMINAL SECTION, FLARED

STA. 264+96.50 RT - STA. 265+34.00 RT  
STA. 269+84.00 RT - STA. 270+21.50 RT  
STA. 271+89.63 RT - STA. 272+27.13 RT

621.80 REMOVAL AND DISPOSAL OF GUARDRAIL

STA. 264+96.50 RT - STA. 265+34.00 RT  
STA. 269+84.00 RT - STA. 270+21.50 RT  
STA. 271+89.63 RT - STA. 272+27.13 RT

646.402 DURABLE 4" WHITE LINE, THERMOPLASTIC  
STA. 257+50 - STA. 272+50 (SOLID LT & RT)

646.412 DURABLE 4" YELLOW LINE, THERMOPLASTIC  
STA. 257+50 - STA. 259+70 (SOLID LT & RT)  
STA. 259+70 - STA. 263+70 (SOLID LT, DASHED RT)  
STA. 263+70 - STA. 267+79 (DASHED CENTERLINE)  
STA. 267+79 - STA. 271+73 (DASHED LT, SOLID RT)  
STA. 271+73 - STA. 272+50 (SOLID LT & RT)

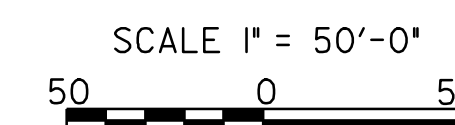
646.602 TEMPORARY 4" WHITE LINE, PAINT

STA. 257+50 - STA. 272+50 (SOLID LT & RT)  
646.612 TEMPORARY 4" YELLOW LINE, PAINT  
STA. 257+50 - STA. 259+70 (SOLID LT & RT)  
STA. 259+70 - STA. 263+70 (SOLID LT, DASHED RT)  
STA. 263+70 - STA. 267+79 (DASHED CENTERLINE)  
STA. 267+79 - STA. 271+73 (DASHED LT, SOLID RT)  
STA. 271+73 - STA. 272+50 (SOLID LT & RT)

675.50 REMOVING SIGNS  
AS SHOWN - 6

STA. 269+48.04 RT

**PROJECT LAYOUT SHEET 1**



PROJECT NAME:  
PROJECT NUMBER: NH 2501(I)S

FILE NAME: pave/05b034/05b034  
PROJECT LEADER: EPD  
DESIGNED BY: JDA  
PLOT FILE: 05b034p01

PLOT DATE: 19-JUN-2009 16:17  
DRAWN BY: JAR  
CHECKED BY: EPD  
SHEET 33 OF 63

**DATUM**  
VERTICAL: N/A  
HORIZONTAL: N/A