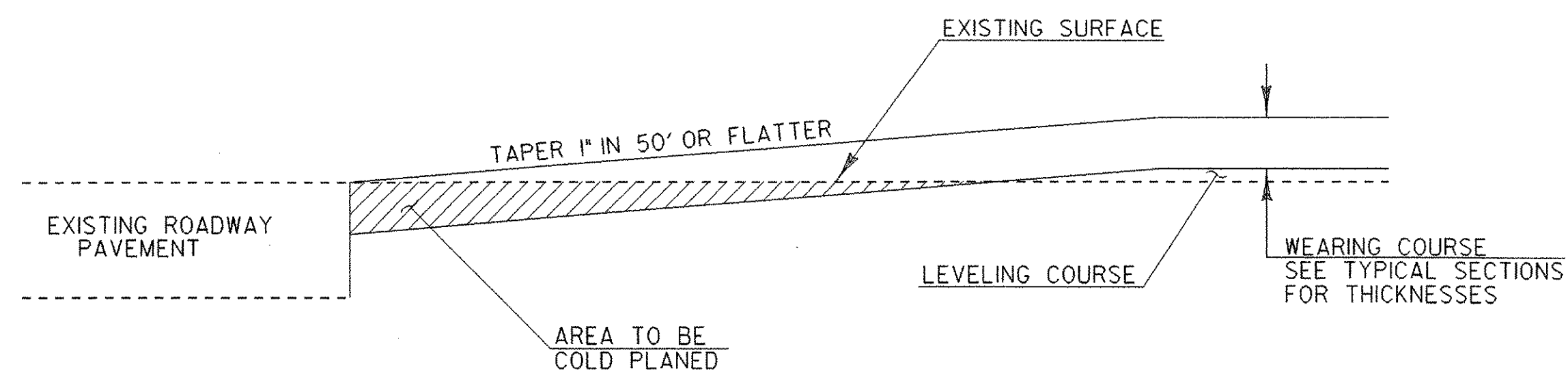


PROJECT PAVING LIMITS

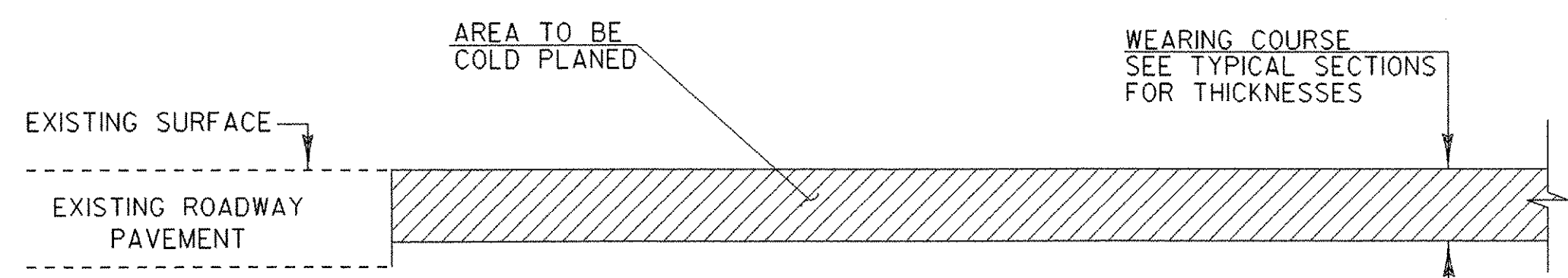
TOWN AND ROUTE	BEGIN STATION	END STATION	LANE TYPICAL	WEARING DEPTH	LEVELING TONS	NOTES
PHASE 1						
DANVILLE U.S. ROUTE 2	337+92.00	479+33.63	11'-0" WESTBOUND TRAVEL LANE	1 3/4"		COLD PLANE 1 3/4" AND PAVE WITH 1 3/4" TYPE IIIS
ST. JOHNSBURY U.S. ROUTE 2	0+00.00	42+24.00	11'-0" WESTBOUND TRAVEL LANE	1 3/4"		COLD PLANE 1 3/4" AND PAVE WITH 1 3/4" TYPE IIIS
PHASE 2						
DANVILLE U.S. ROUTE 2	251+38.08	479+33.63	4'-0" - VARIES - VARIES - 8'-0"	1 3/4"	6390.37	LEVEL WITH 1/2" TYPE IVS & OVERLAY WITH 1 3/4" TYPE IIIS
ST. JOHNSBURY U.S. ROUTE 2	0+00.00	52+06.00	4'-0" - VARIES - VARIES - 8'-0"	1 3/4"		LEVEL WITH 1/2" TYPE IVS & OVERLAY WITH 1 3/4" TYPE IIIS
	52+06.00	132+00.00	* 10'-0" - 12'-0" - 12'-0" - 4'-0"	1 3/4"		LEVEL WITH 1/2" TYPE IVS & OVERLAY WITH 1 3/4" TYPE IIIS
	132+00.00	142+03.20	* 10'-0" - 12'-0" - 12'-0" - 1'-6"	1 3/4"		COLD PLANE 2 1/4", LEVEL WITH 1/2" TYPE IVS AND PAVE WITH 1 3/4" TYPE IIIS

* EACH SIDE OF ROADWAY



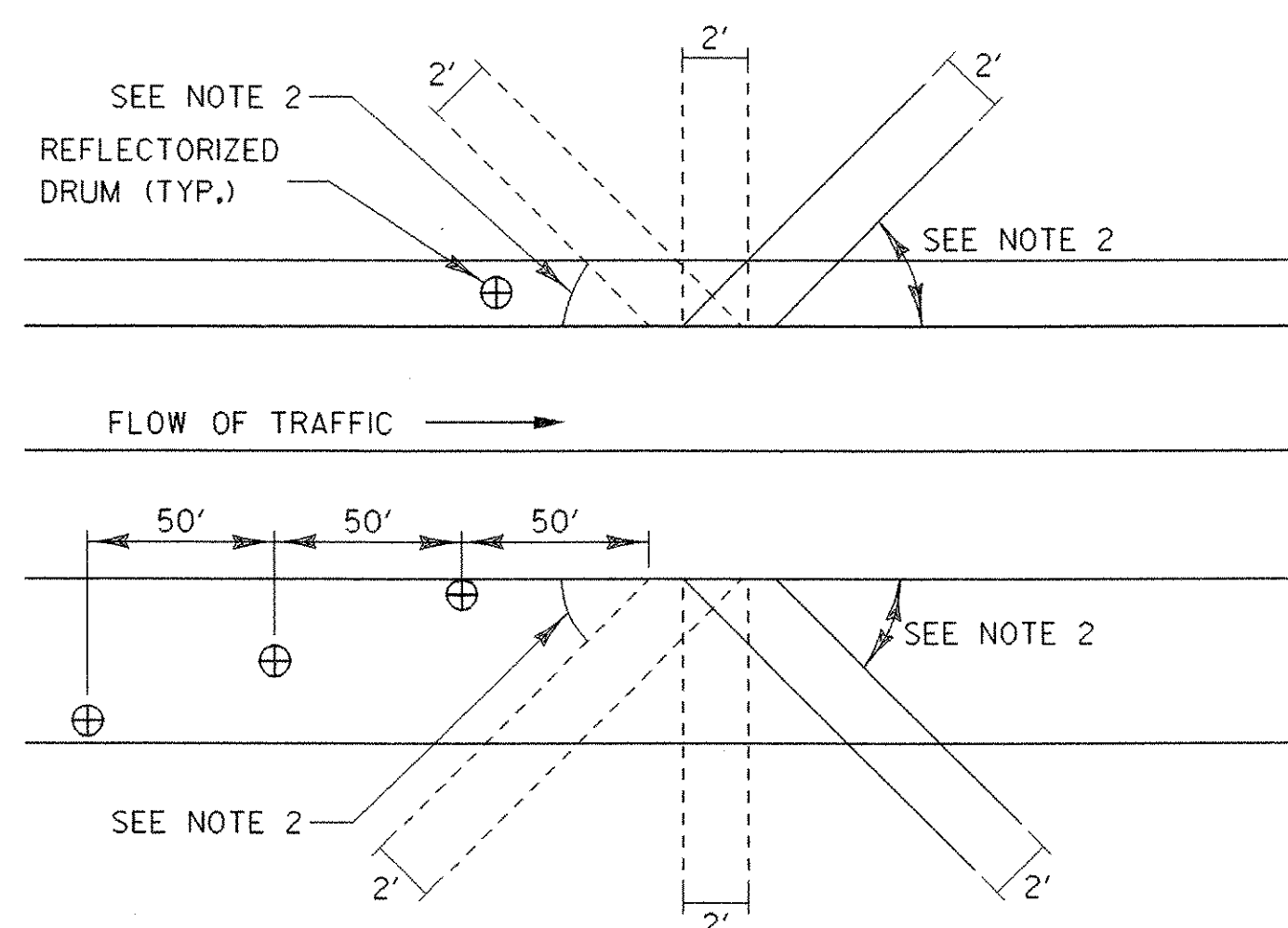
BUTT JOINT DETAIL

DANVILLE
STA. 251+38.08 (BEGIN PROJECT PHASE 2)



BUTT JOINT DETAIL

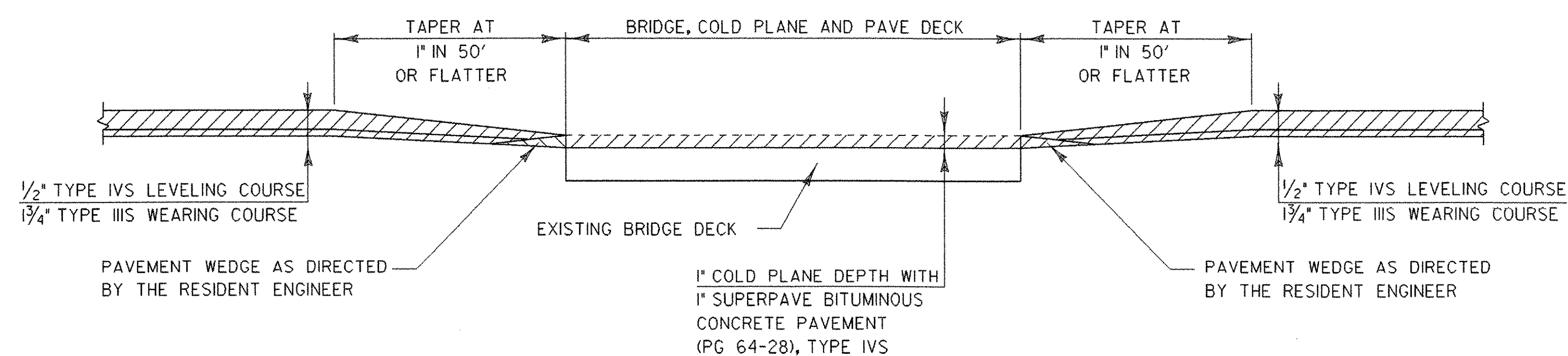
DANVILLE
STA. 337+92.00 (BEGIN PHASE 1)
ST. JOHNSBURY
STA. 42+24.00 (END PHASE 1)
STA. 142+03.20 (END PROJECT PHASE 2)



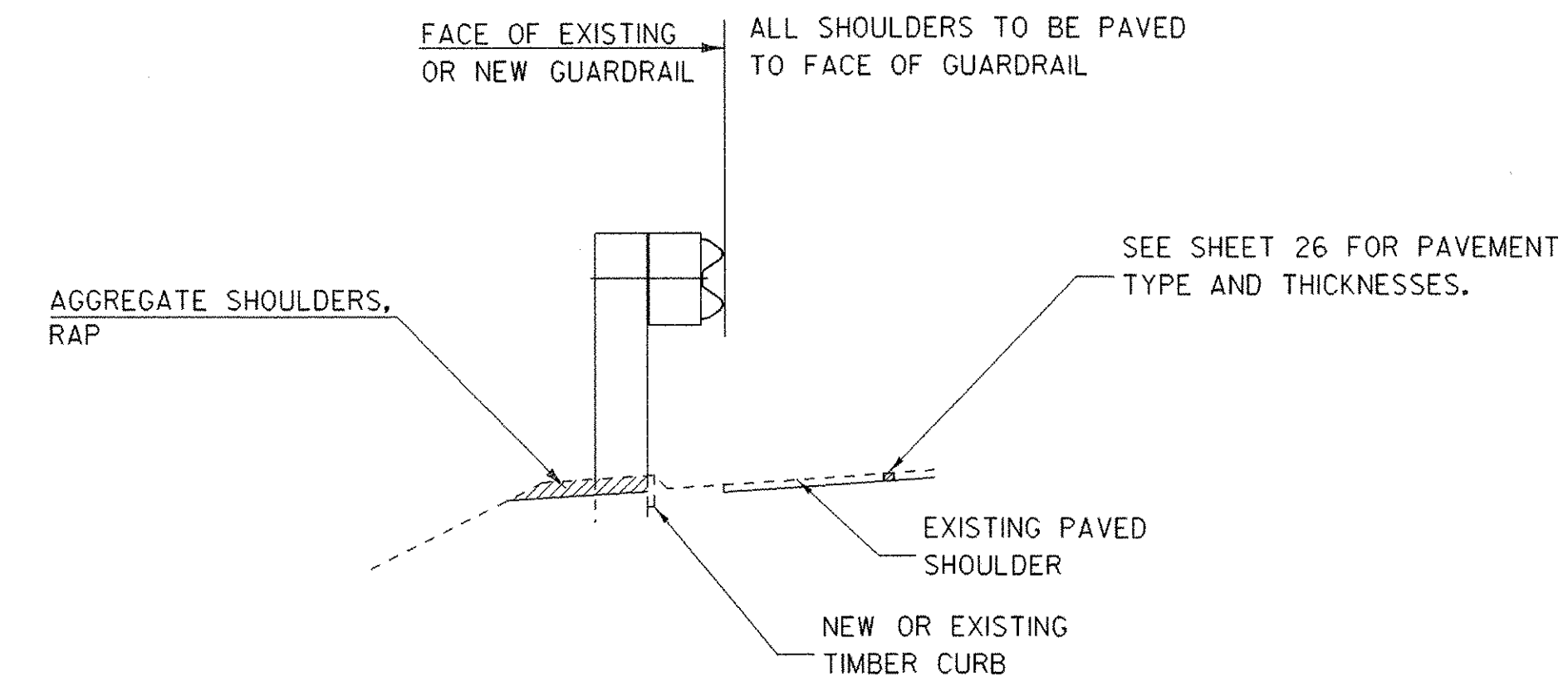
BLEEDER DETAIL

BLEEDER DETAIL NOTES:

1. BLEEDERS ARE TO BE CUT WHILE COLD PLANING, AT LOCATIONS SPECIFIED BY THE RESIDENT ENGINEER.
2. ANGLE BLEEDERS TO BEST ACCEPT WATER FLOW.
3. CUT ALL BLEEDERS TO THE DEPTH OF COLD PLANING AND GRADE TO DRAIN. PAYMENT INCIDENTAL TO ITEM 210.10.
4. BLEEDERS ARE TO BE FILLED DURING PAVING WITH ITEM 490.30 OR AS DESIGNATED BY THE RESIDENT ENGINEER.
5. REFLECTORIZED DRUMS MUST BE PLACED AS SHOWN TO WARN MOTORISTS OF THE GAP IN THE SHOULDER. PAYMENT INCIDENTAL TO ITEM 641.10.
6. BLEEDERS ARE NOT REQUIRED IF THE COLD PLANED AREAS ARE PAVED BACK THE SAME DAY.



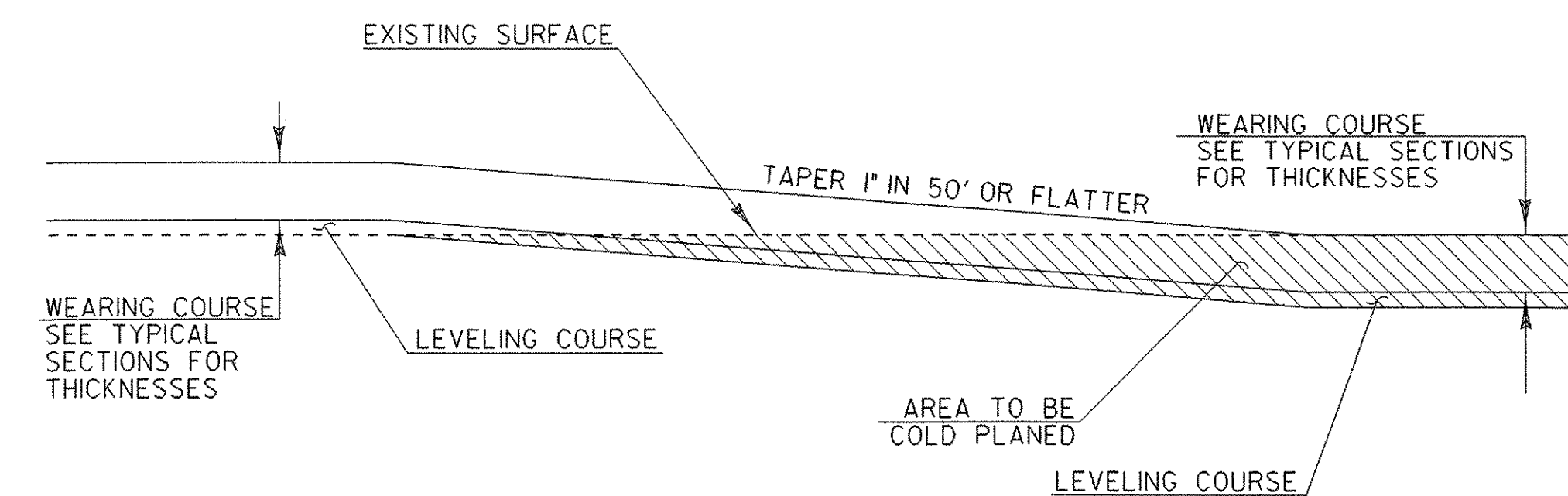
BRIDGE NO. 103E & 103W TRANSITION DETAIL



TYPICAL SECTION AT GUARDRAIL

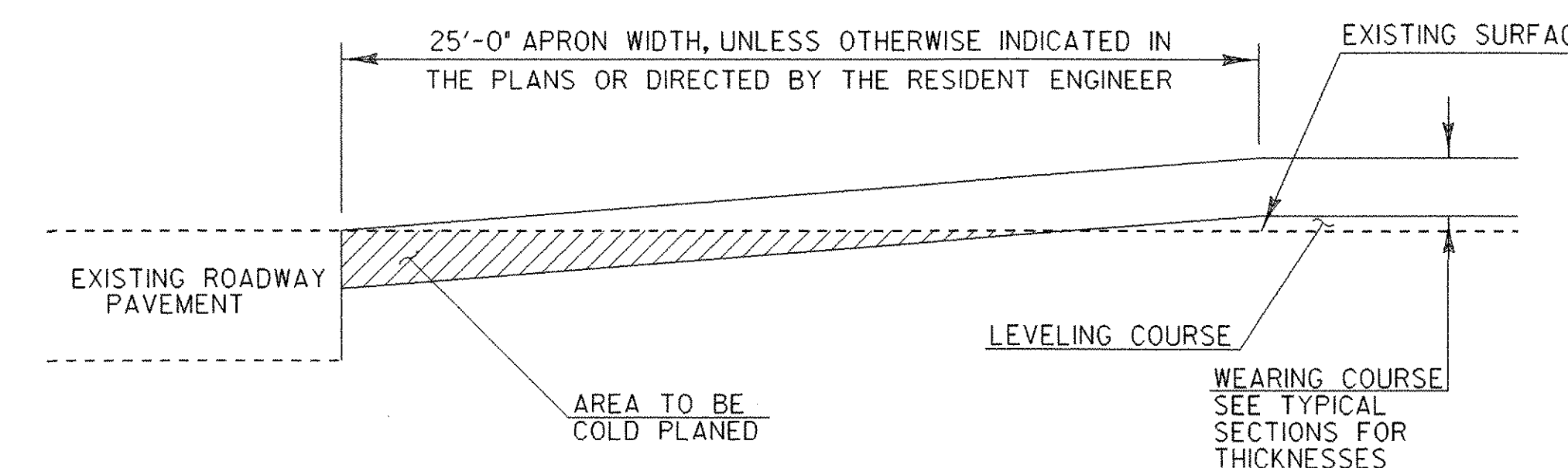
NOTES:

1. AN ESTIMATED QUANTITY OF ITEM 616.35, "TREATED TIMBER CURB", HAS BEEN INCLUDED TO REPLACE DAMAGED OR MISSING CURB, AS DIRECTED BY THE RESIDENT ENGINEER.
2. ALL GUARDRAIL SHALL BE STEEL BEAM GUARDRAIL WITH STEEL POSTS AND WOOD BLOCKOUTS (OR APPROVED ALTERNATIVE MATERIAL), NEW GUARDRAIL SHALL COMPLY WITH STANDARD G-1.



TRANSITION AREA DETAIL

ST. JOHNSBURY
STA. 132+00.00 (END OVERLAY / BEGIN COLD PLANE PHASE 2)



TRANSITION AREA FOR SIDE ROADS

SEE LAYOUT SHEETS FOR LOCATIONS OF ALL SIDE ROADS

PROJECT TYPICAL SHEET 2

PROJECT NAME: DANVILLE - ST. JOHNSBURY

PROJECT NUMBER: NH 2501(1)S

FILE NAME: pave/05b034/05b034

PROJECT LEADER: EPD

DESIGNED BY: JDA

PLOT FILE: 05b034+yp2.i

PLOT DATE: 12-JAN-2007

DRAWN BY: SJB

CHECKED BY: EPD

SHEET 27 OF 63