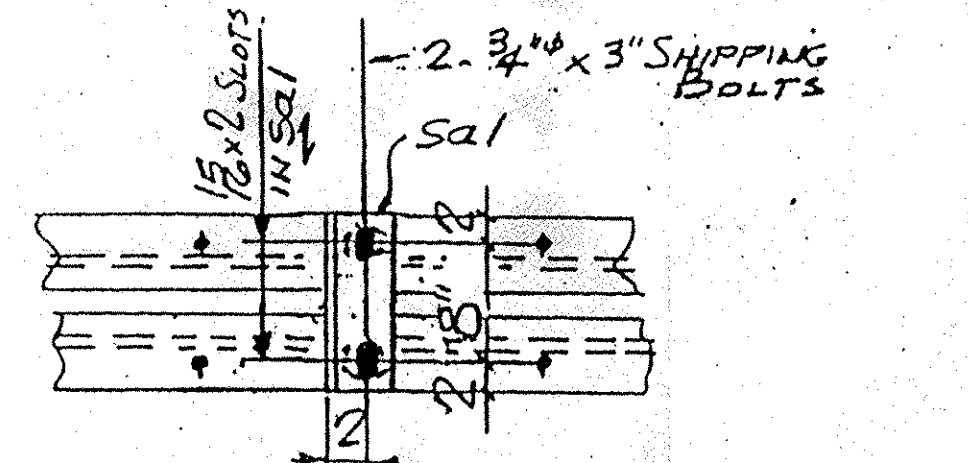
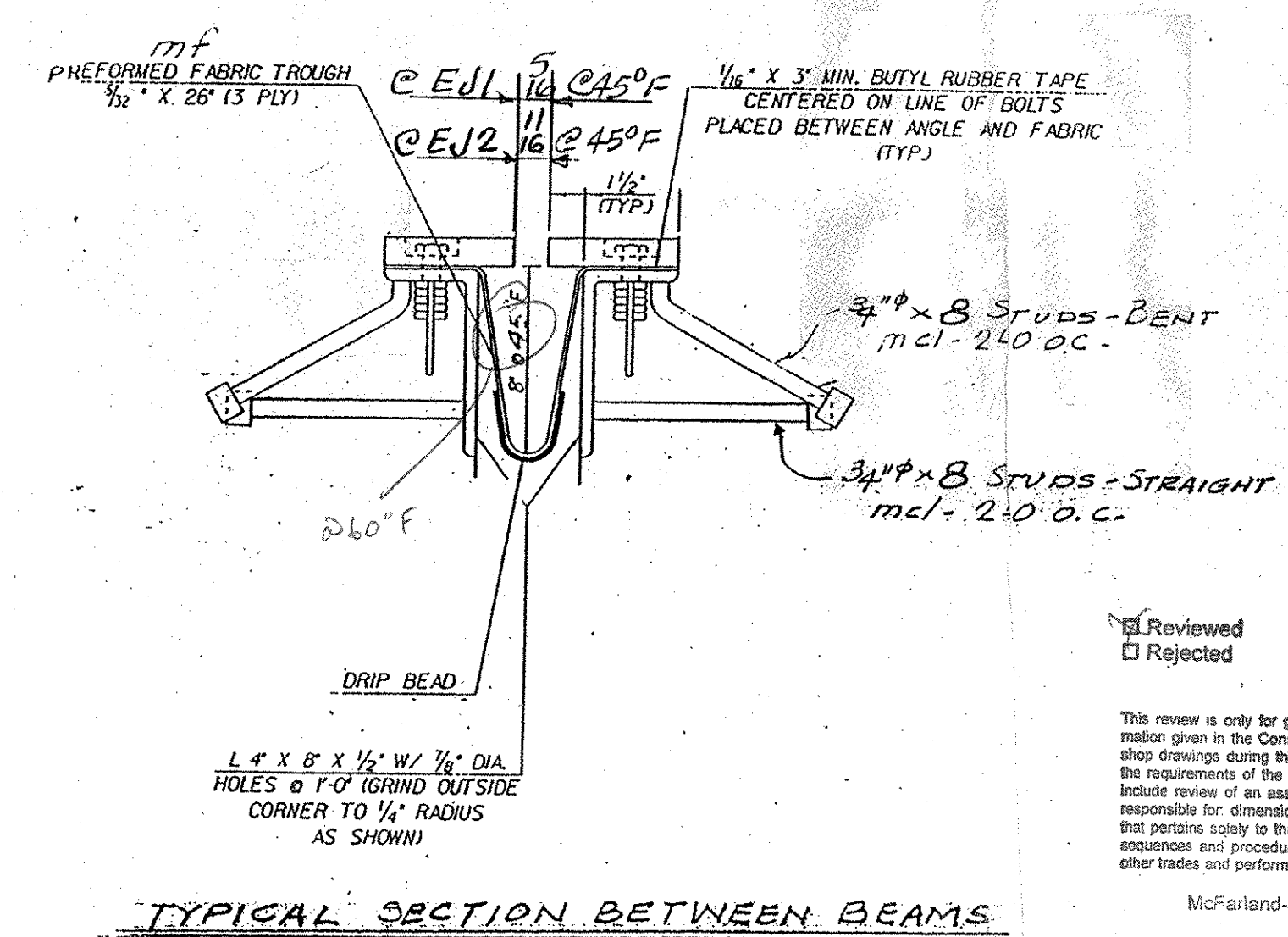
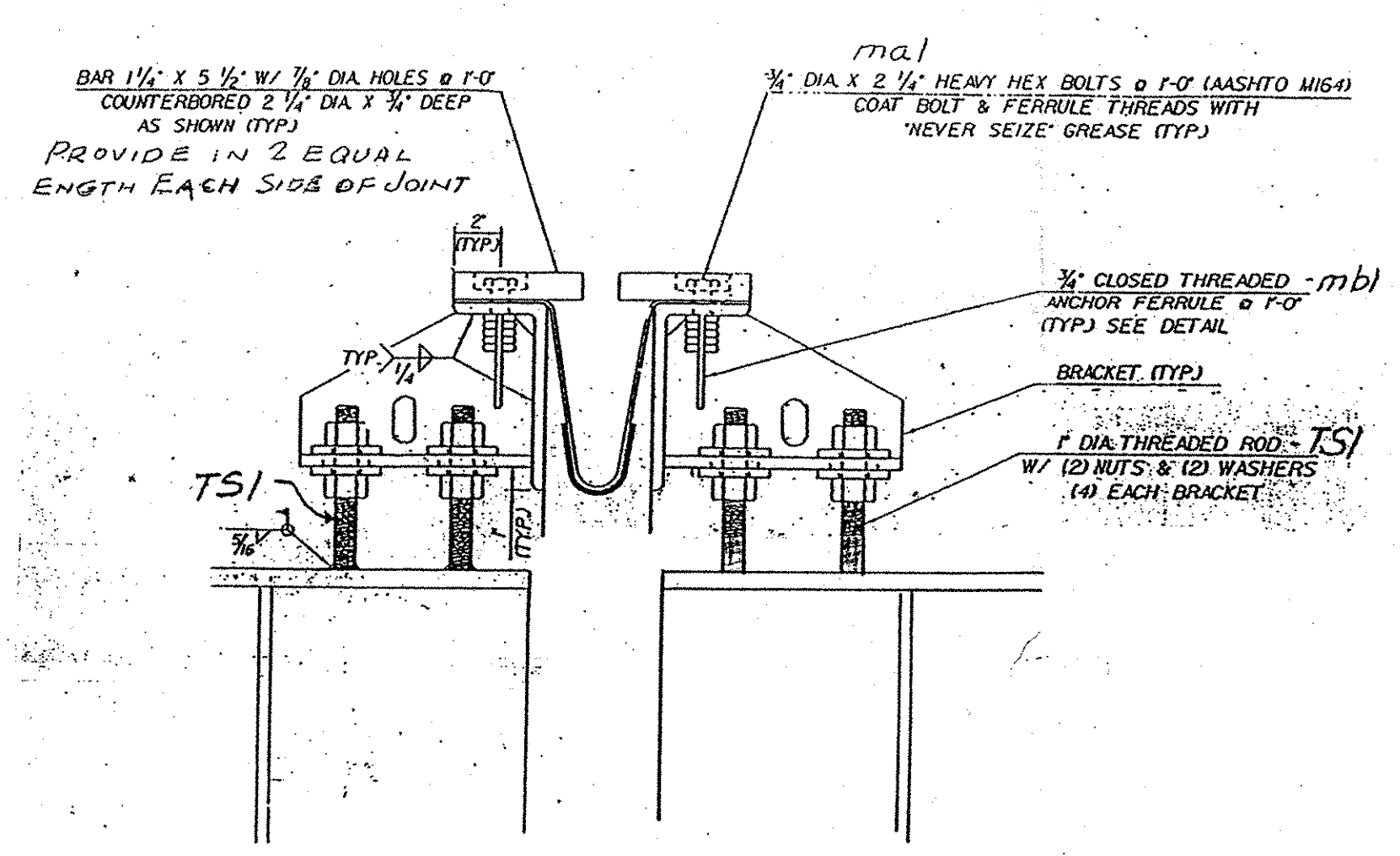
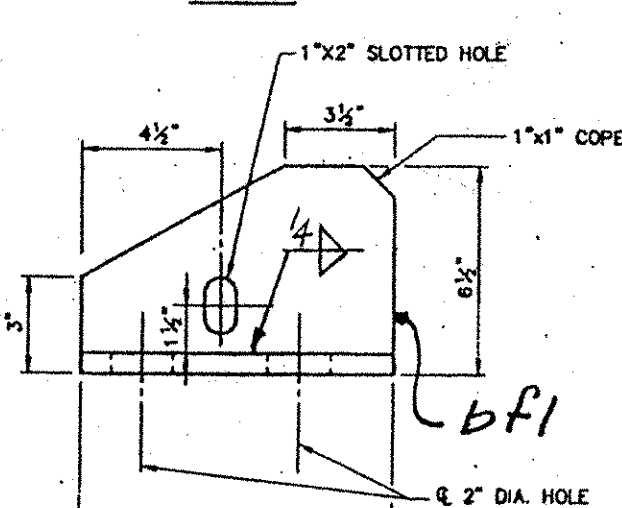
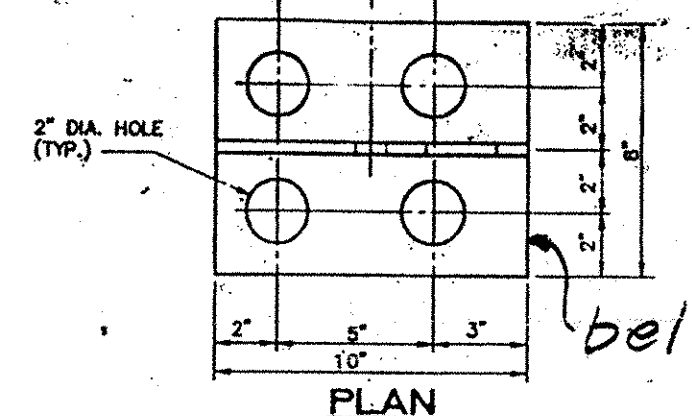
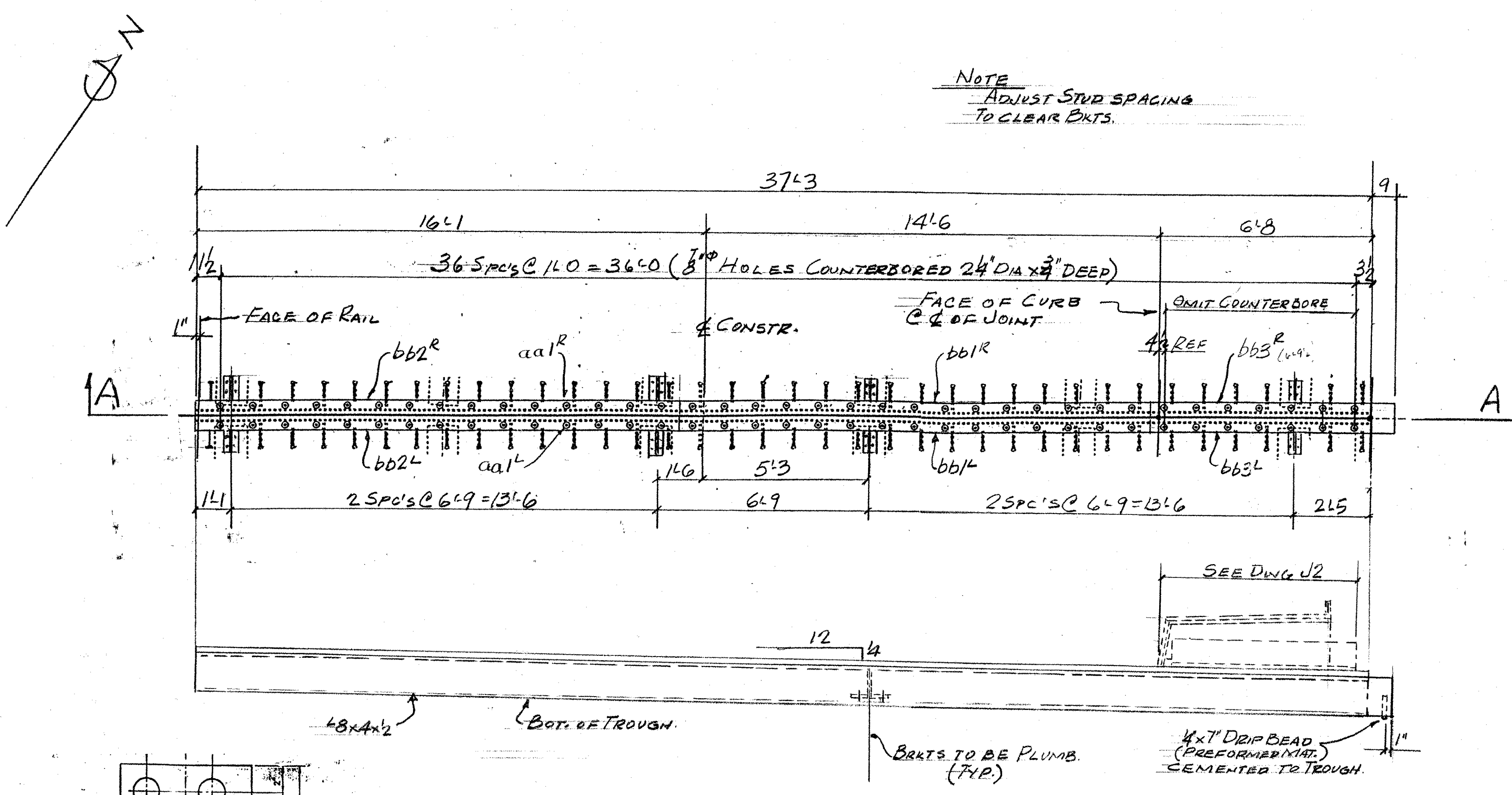
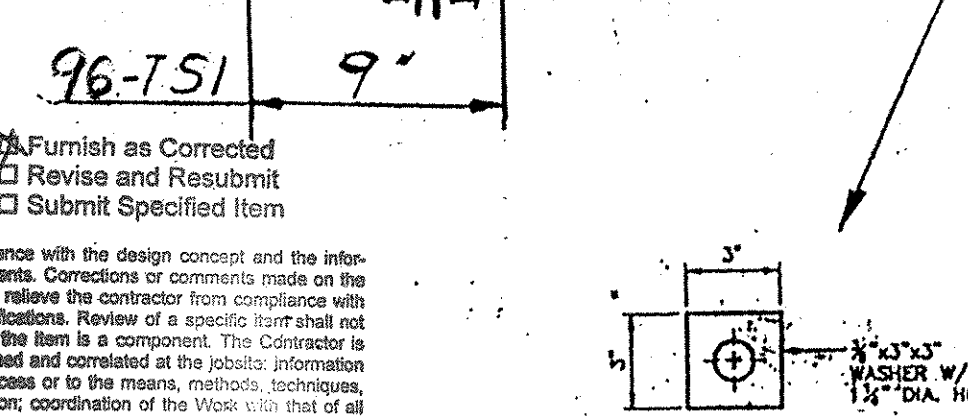
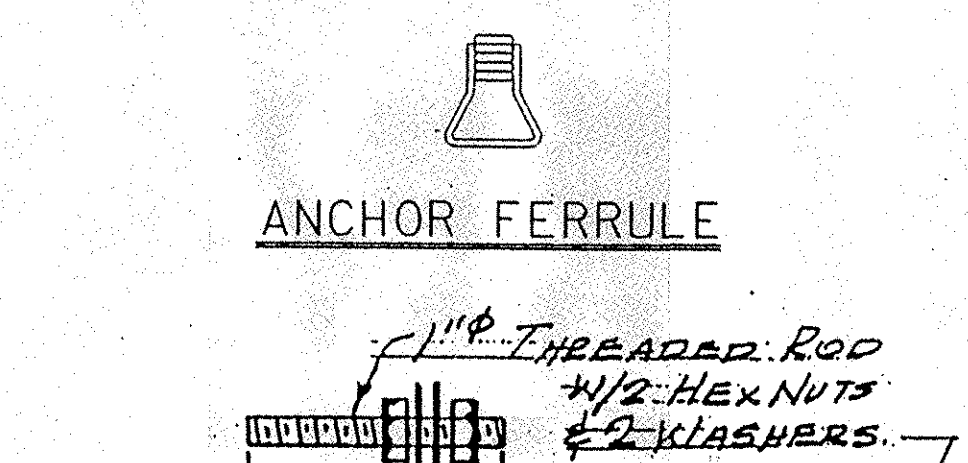


ABM INFO		SHOP BILL				JOB NO. 227	DRG. NO. J1		
PAGE	LINE	NO.	DESCRIPTION	FT	IN	ASSEM. MARK	SHIPPING MARK	REMARKS	WEIGHT
		1	EXP. JOINT ASSY	38	02		EJ1		
		1	DO	38	02		EJ2		
		4	L 8 x 4 x 1/2	37	3	aa1/2			
		4	BAR 1/4 x 5/8	15	0	bb1/2			
		4	DO	15	52	bb2/2			
		4	DO	6	92	bb3/2			
		24	R 2 x 8	10		ba1			
		24	R 2 x 6	10		bf1			
		120	3/4" H.S. BOLTS	24		ma1			
		148	3/4" ANCHOR FERRULES	8		mb1			
		148	3/4" ANCHOR STUDS	8		mc1			
		2	PERFORMED FABRIC	39	01	mf1			
		2	1/4" BUTYL RUBBER TAPE	39	01	mg1			
		12	L 4 x 4 x 3/8	1	0	sa1			
		24	3/4" H.S. BOLTS	3					
		96	1/4" THREADED RODS	9			TS1		
		192	1" HEX NUTS				SHOP		
		192	BAR 3 x 3/8	3			WI		
		SIDEWALK ASSEMBLIES							
		2	R 2 x 19	5	62	pla		SLIP NOT FINISH	
		2	R 2 x 94	1	7	plb			
		2	R 2 x 3	1	7	plc			
		2	R 2 x 3	5	72	pld		SLIP NOT FINISH	
		2	R 2 x 3	94		p2b			
		2	R 2 x 3	36		p2c			
		2	R 2 x 7	5	62	p2a			
		2	DO	83		p3b			
		2	DO	38		p3c			
		2	R 2 x 11	5	6	p4			
		2	DO	5	6	p5			
		4	L 6 x 4 x 1/2	5	10	q1a			
		2	L 2 1/2 x 2 1/2 x 3/8	5	6	q2			
		18	3/4" ANCHOR STUDS	6		mb1			
		10	3/4" ANCHOR FERRULES	2		mb1			
		34	3/4" CLOSED THREADED ANCHOR FERRULES			mb1			
		24	3/4" H.S. BOLTS	24		ma1			
		28	DO	3		SHOP			



SHIPPING DEVICE
SPACED 5'-0" O.C. MAX. (6" REQ'D)
PER JOINT



Reviewed Rejected Furnish as Corrected Revise and Resubmit Submit Specified Item

This review is only for general conformance with the design concept and the information given in the Construction Documents. Corrections or comments made on the shop drawings during this review do not relieve the contractor from compliance with the requirements of the plans and specifications. Review of a specific item shall not include review of an assembly of which the item is a component. The Contractor is responsible for dimensions to be confirmed and correlated at the jobsite. Information that pertains solely to the fabrication process or to the means, methods, techniques, sequences and procedures of construction; coordination of the Work with that of all other trades and performing all work in a safe and satisfactory manner.

McFarland-Johnson, Inc.
Date 6-25-04
By Steven F. Della

WORK THIS DWG. W/ DWG. J2

EJ1 - ONE REQ'D. (PIER 1)
EJ2 - ONE REQ'D. (PIER 2)

PAY ITEM 516.10

OUT FOR APPROVAL	6-20-04								
OUT FOR APPROVAL									
ISSUED TO SHOP									
FIELD & OFFICE									

REV.	REMARKS	DATE	DWN	CHK	APP	Q.A.	NO.	DIA.	LGT	TYPE	WASHER
	PROJECT NO. BHO-1447 (26) STATE PROJECT NO. 2										
	MATERIAL: AASHTO M270-GR3L ELECTRODES: PER PROG. HOLES: AS NOTED SHOP BOLTS: 3/4" SURFACE PREP. & PAINT: GALV. AFTER FAB. (ASTM-A123) N168 - GALV. TYPE 2										

DESCRIPTION: EXP. JOINTS - PIERS 1 & 2	DRAWN BY	DATE
JOB:	JPF	6-04
CENTER STREET OVER PASSUMPSIC RIVER LYNDON, VT.	CHKD BY	
	EJ	
	APPROV BY	
	Q.A.	

CUSTOMER: AUSTIN CONSTR.

CASCO BAY STEEL STRUCTURES, INC.

75 SPRING HILL ROAD SACO, MAINE 04072
PHONE (207) 282-7360 FAX. (207) 282-1179

JOB NO. 227 DRG. NO. J1
REV. 1