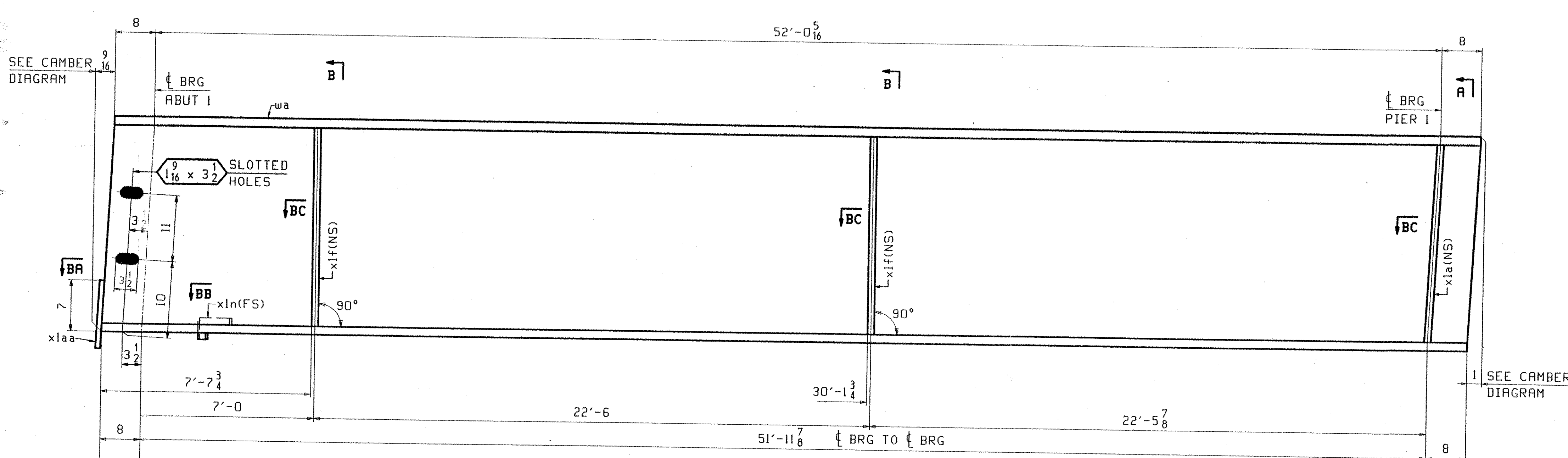
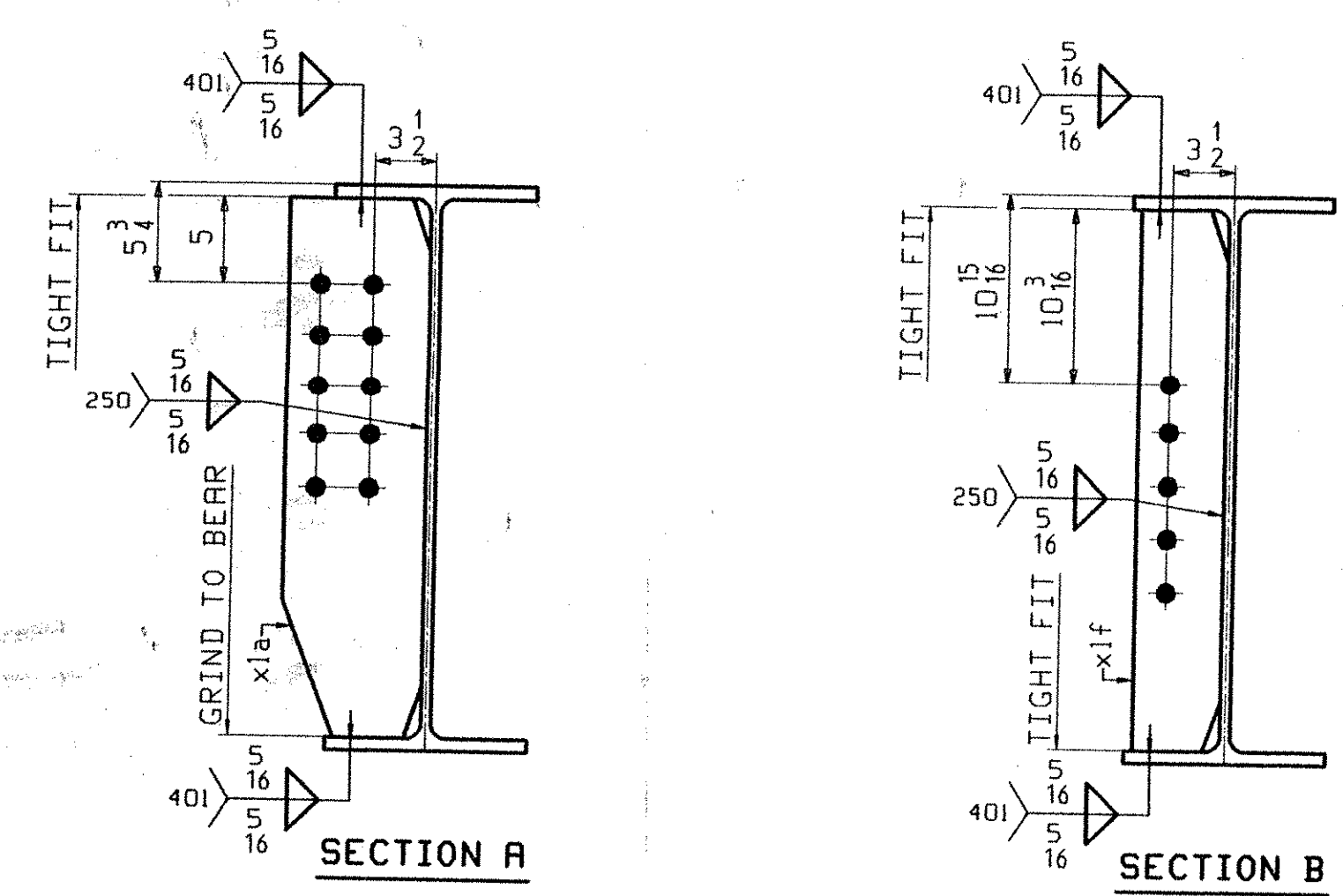
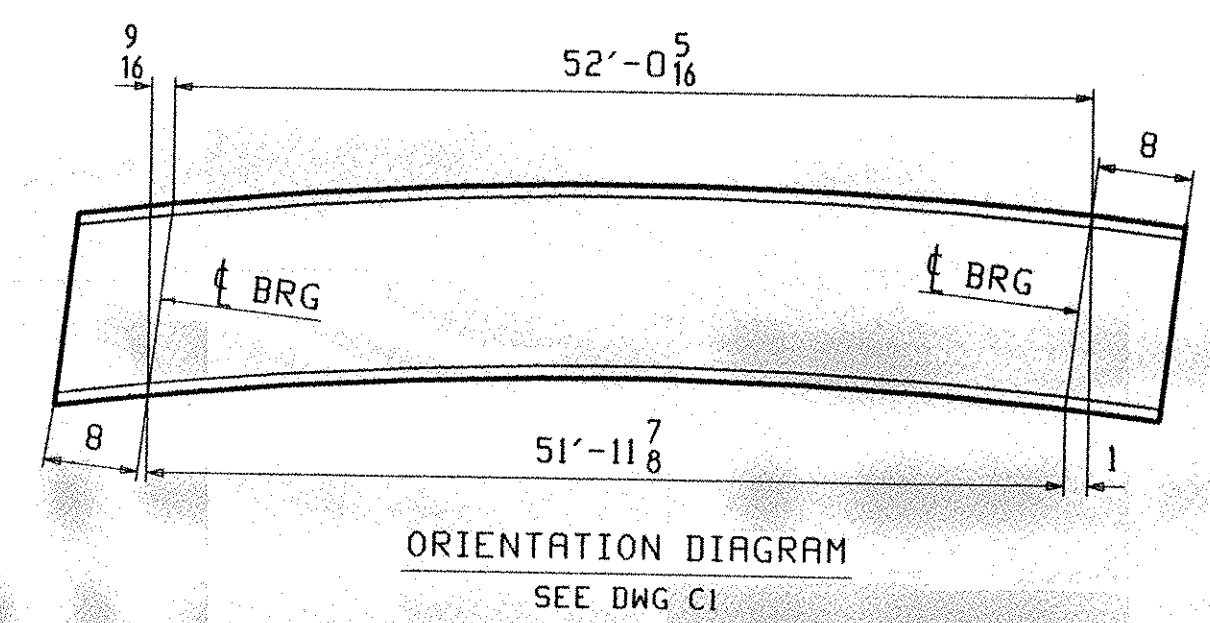
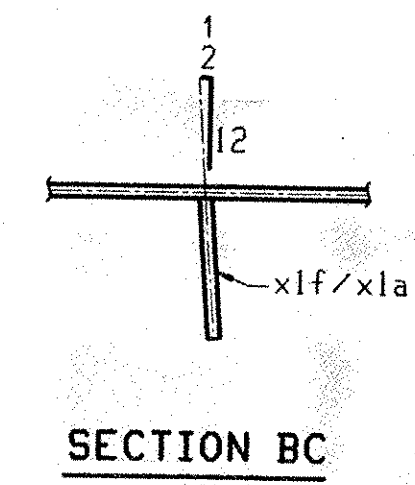
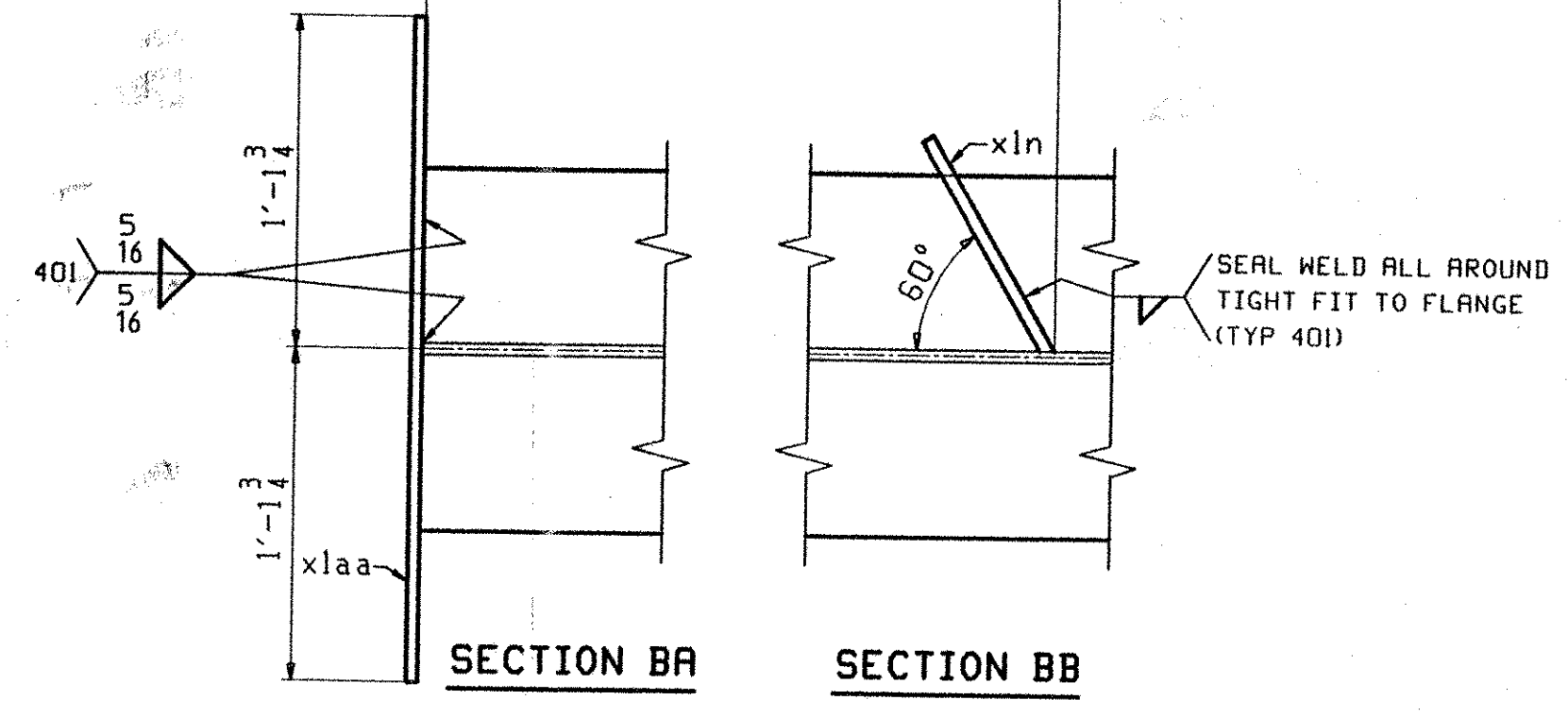


| PAGE | LINE | MARK | QTY | MARK | MATERIAL     | LENGTH |        | REMARKS             | WT   | PROCUREMENT NOTES |
|------|------|------|-----|------|--------------|--------|--------|---------------------|------|-------------------|
|      |      |      |     |      |              | FT     | INCHES |                     |      |                   |
|      |      |      |     |      | STRINGER     |        |        |                     | 6402 |                   |
| 1    | C    |      | 1   | wa   | W 33x118     | 53     | 4 7/8  | (M270-50WT2) (H2-3) |      |                   |
| 2    | B    |      | 2   | xlf  | PL 1/2x5     | 2      | 7 3/8  |                     |      |                   |
| 2    | F    |      | 1   | xla  | PL 1/2x8     | 2      | 7 3/8  | FIE                 |      |                   |
| 2    | N    |      | 1   | xln  | PL 1/4x3     | 0      | 8 5/16 |                     |      |                   |
| 2    | K    |      | 1   | xlaa | PL 1/4x9 1/4 | 2      | 3 1/2  |                     |      |                   |



**ONE - STRINGER - 1G1A**

FOR STRINGER STANDARD DETAILS SEE DRAWING XI.  
 FOR CAMBER DIAGRAM SEE DRAWING CI.  
 FOR GENERAL NOTES SEE DRAWING GNI.  
 H2-3 DENOTES MATERIAL SUBJECT TO CHARPY V-NOTCH TESTING.



APPROVED 4-8-04

|                  |         |  |  |  |  |  |  |  |  |  |
|------------------|---------|--|--|--|--|--|--|--|--|--|
| OUT FOR APPROVAL | 3-18-04 |  |  |  |  |  |  |  |  |  |
| OUT FOR APPROVAL |         |  |  |  |  |  |  |  |  |  |
| ISSUED TO SHOP   | 6-7-04  |  |  |  |  |  |  |  |  |  |
| FIELD & OFFICE   |         |  |  |  |  |  |  |  |  |  |

| REV.   | REMARKS  | DATE | DWN | CHK | APP | Q.A. | NO. | DIA. | LGT | TYPE      | WASHER      |
|--|----------|------|-----|-----|-----|------|-----|------|-----|-----------|-------------|
| MATERIAL:  | M270-50W |      |     |     |     |      |     |      |     |           | SHOP BOLTS: |
| ELECTRODES:  |          |      |     |     |     |      |     |      |     |           |             |
| HOLES:   | 15-ø     |      |     |     |     |      |     |      |     |           |             |
| SURFACE PREP. & PAINT:<br>SEE DRAWING GNI  |          |      |     |     |     |      |     |      |     |           |             |
| ALL STEEL WITHIN 6'-0 OF PIERS 1 & 2 SHALL BE PAINTED IN ACCORDANCE WITH THE NOTES ON GNI. |          |      |     |     |     |      |     |      |     |           |             |
| DESCRIPTION: STRINGER - 1G1A   |          |      |     |     |     |      |     |      |     | DRAWN BY  | DATE        |
| JOB: CENTER ST (ALT VT 122) OVER THE PASSUMPSIC RIVER                                      |          |      |     |     |     |      |     |      |     | JTB       | 02/20       |
| BRIDGE NO. 2, PROJ BHO 1447(26)  |          |      |     |     |     |      |     |      |     | CHKD BY   |             |
| LYNDON, VT (CALEDONIA COUNTY)  |          |      |     |     |     |      |     |      |     | LF        | 03/15       |
| CONTRACTOR: AUSTIN CONSTRUCTION  |          |      |     |     |     |      |     |      |     | APPROV BY |             |
| SUPERVISOR: W. J. GATTI  |          |      |     |     |     |      |     |      |     |           |             |
| CUSTOMER: VERMONT R. O. T.   |          |      |     |     |     |      |     |      |     |           |             |
| CASCO BAY STEEL STRUCTURES, INC.   |          |      |     |     |     |      |     |      |     | JOB NO.   | DRG. NO.    |
| 75 SPRING HILL ROAD SACO, MAINE 04072  |          |      |     |     |     |      |     |      |     | 227       | 1           |
| PHONE (207) 282-7360 FAX. (207) 282-1179   |          |      |     |     |     |      |     |      |     | REV.      | △           |

LF Rev 15 02/21/05 EST 2024 /user/2485/1 Rev 0