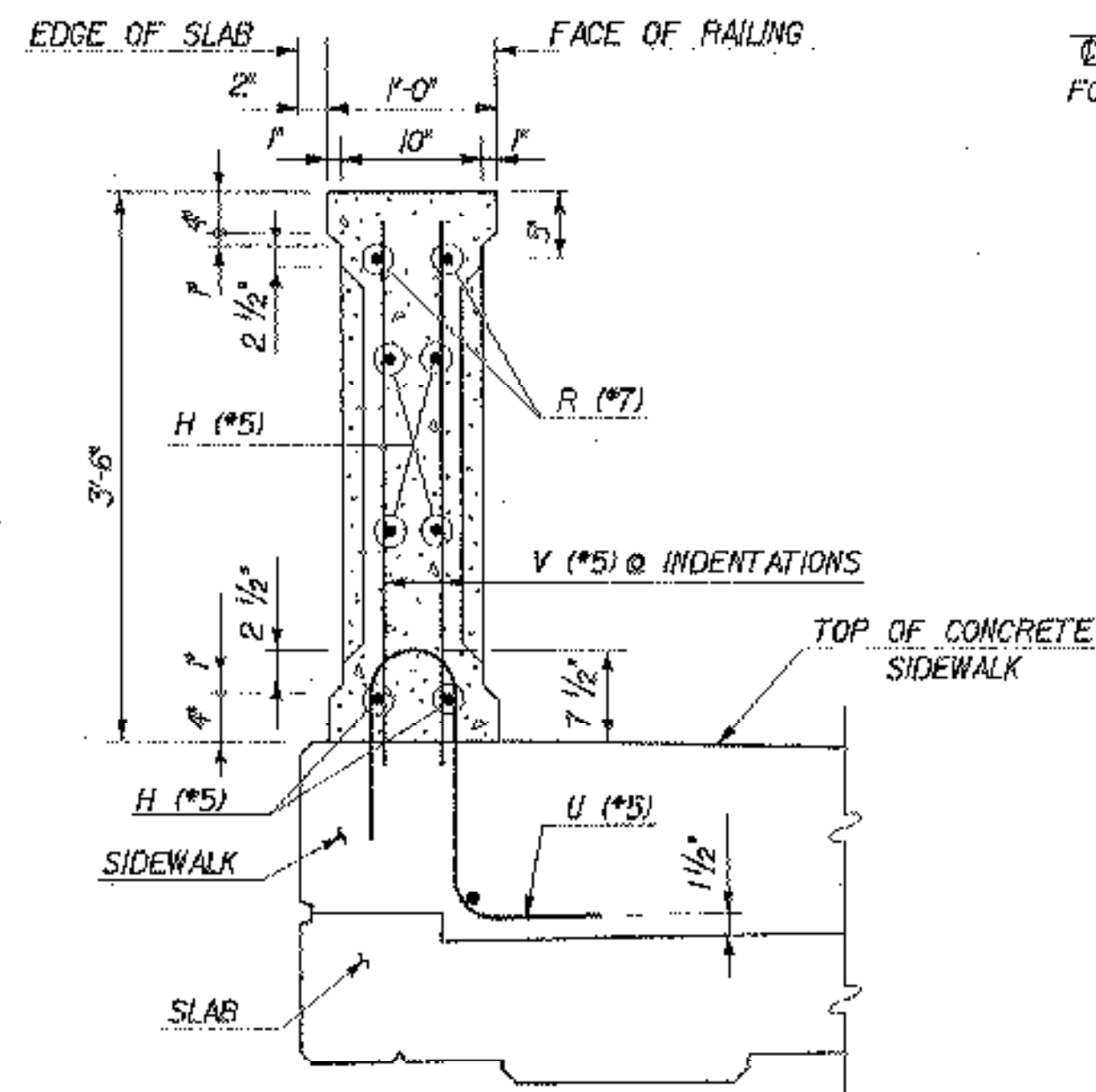
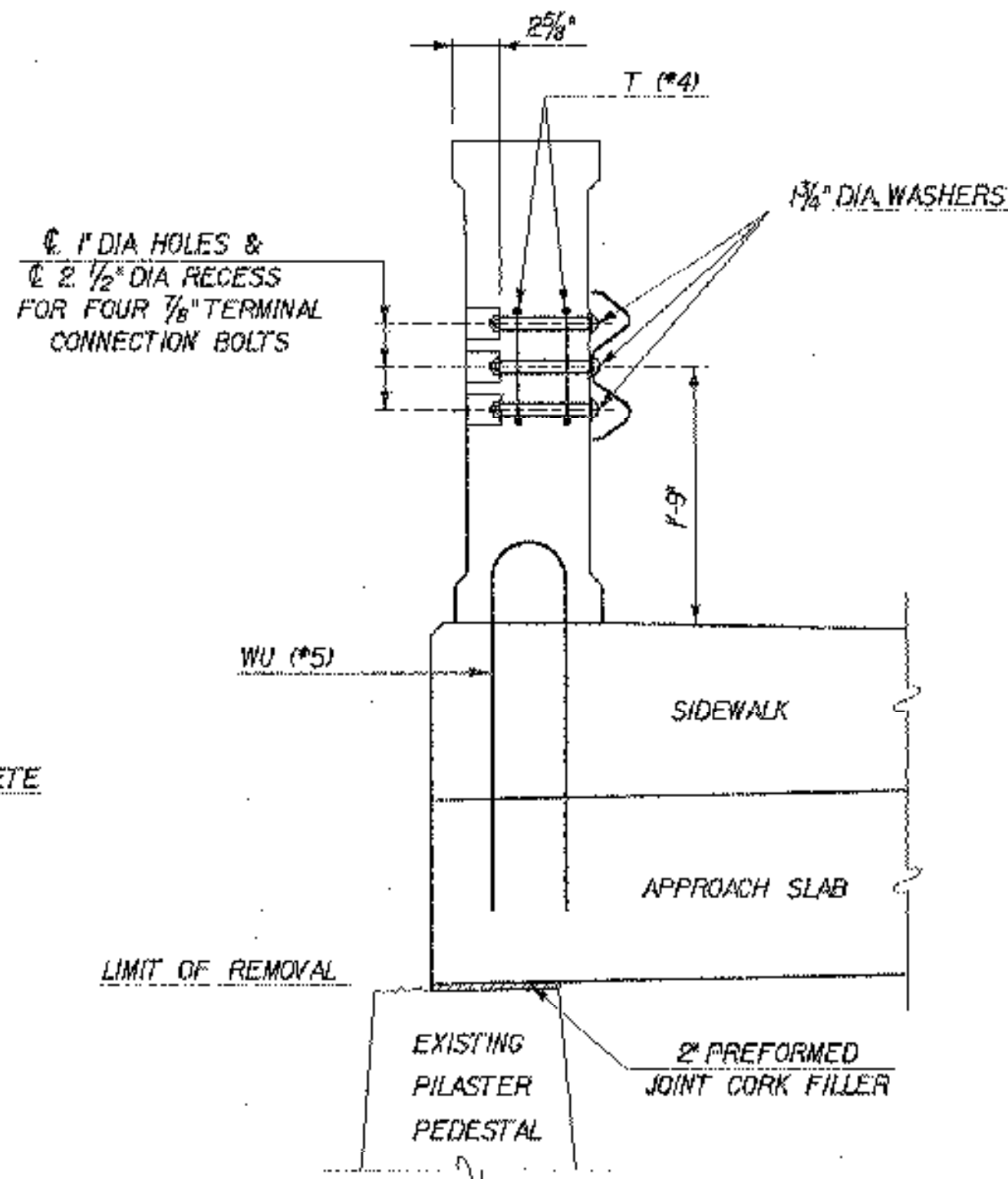


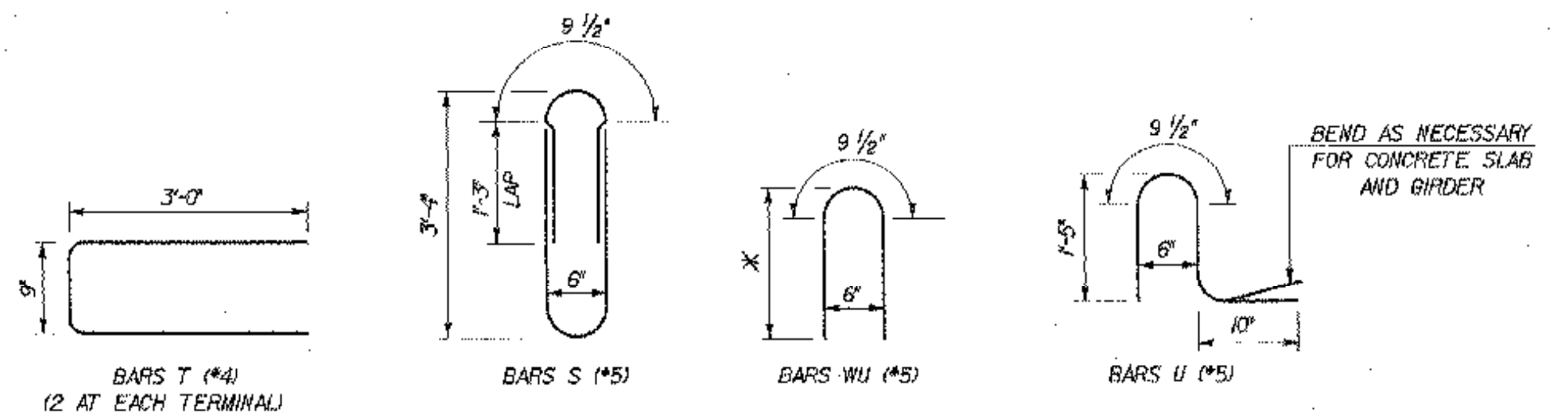
SECTION B-B
NOT TO SCALE
(SHOWING PILASTER AND BEYOND)



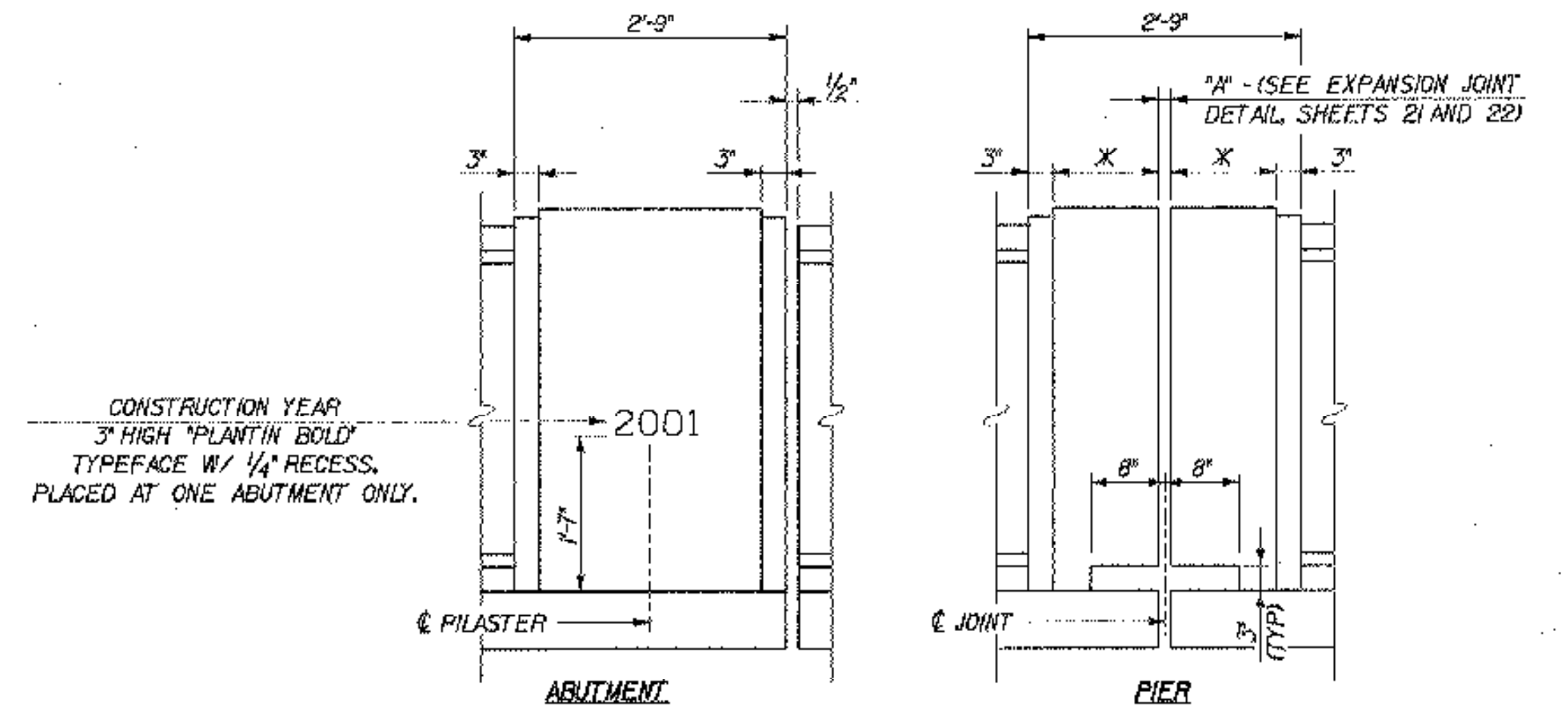
SECTION C-C
NOT TO SCALE



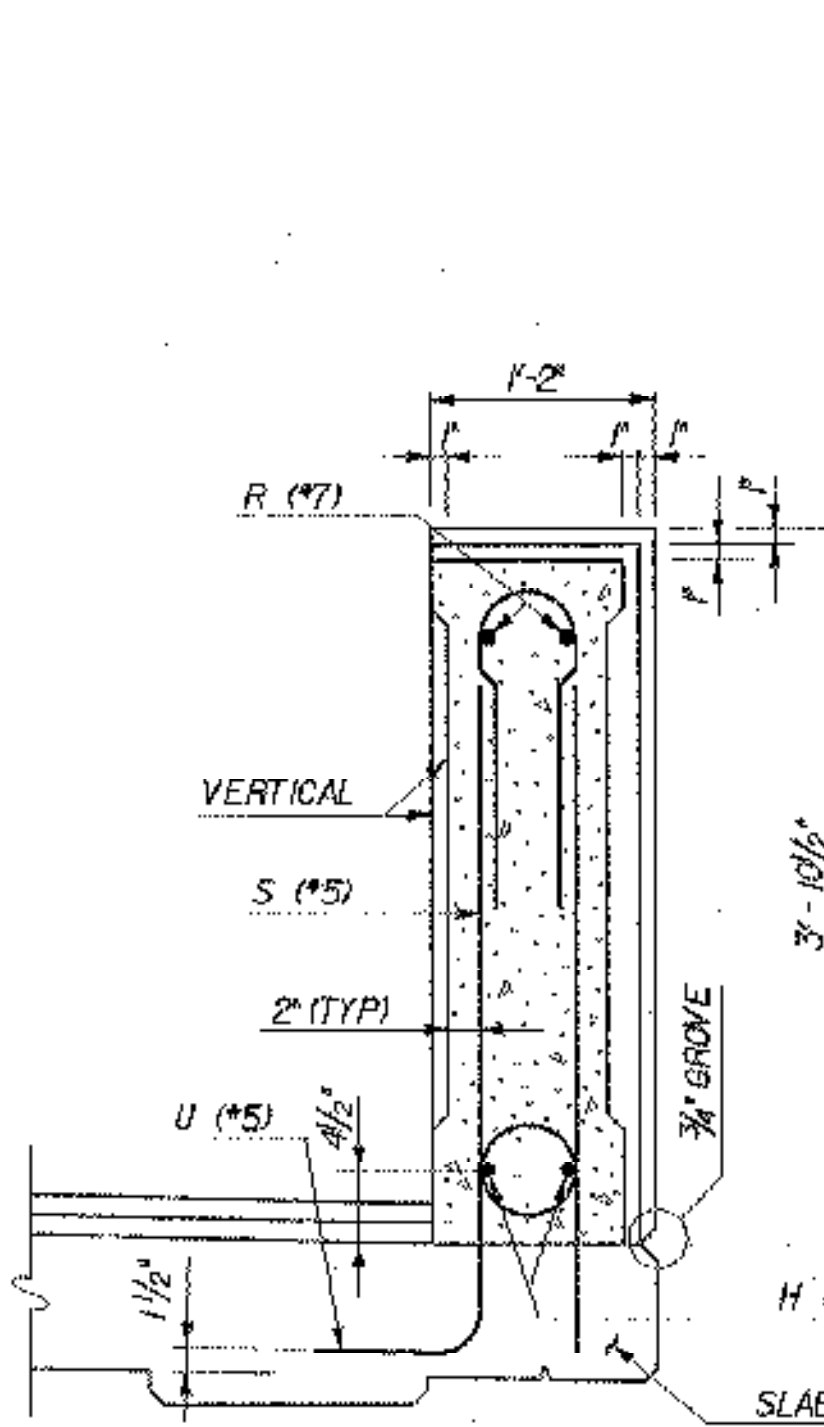
SECTION D-D
NOT TO SCALE
(SHOWING HDSBGR CONNECTION, SOME REINFORCING OMITTED FOR CLARITY) (SEE SECTION B-B FOR OMITTED REINFORCING)



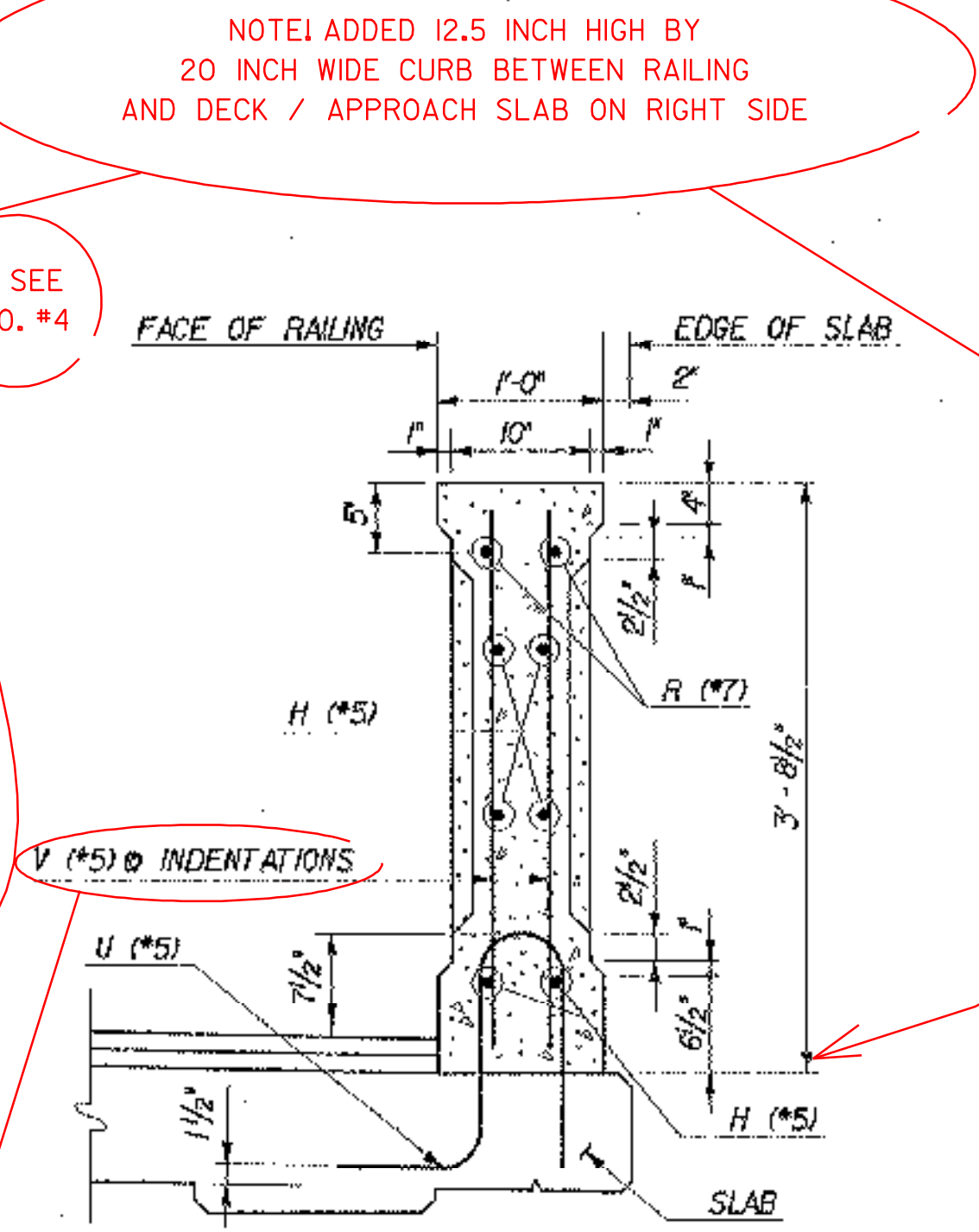
REINFORCING BAR DETAILS
NOT TO SCALE
(X 1'-10" ON DECK, 2'-7" ON SIDEWALK)



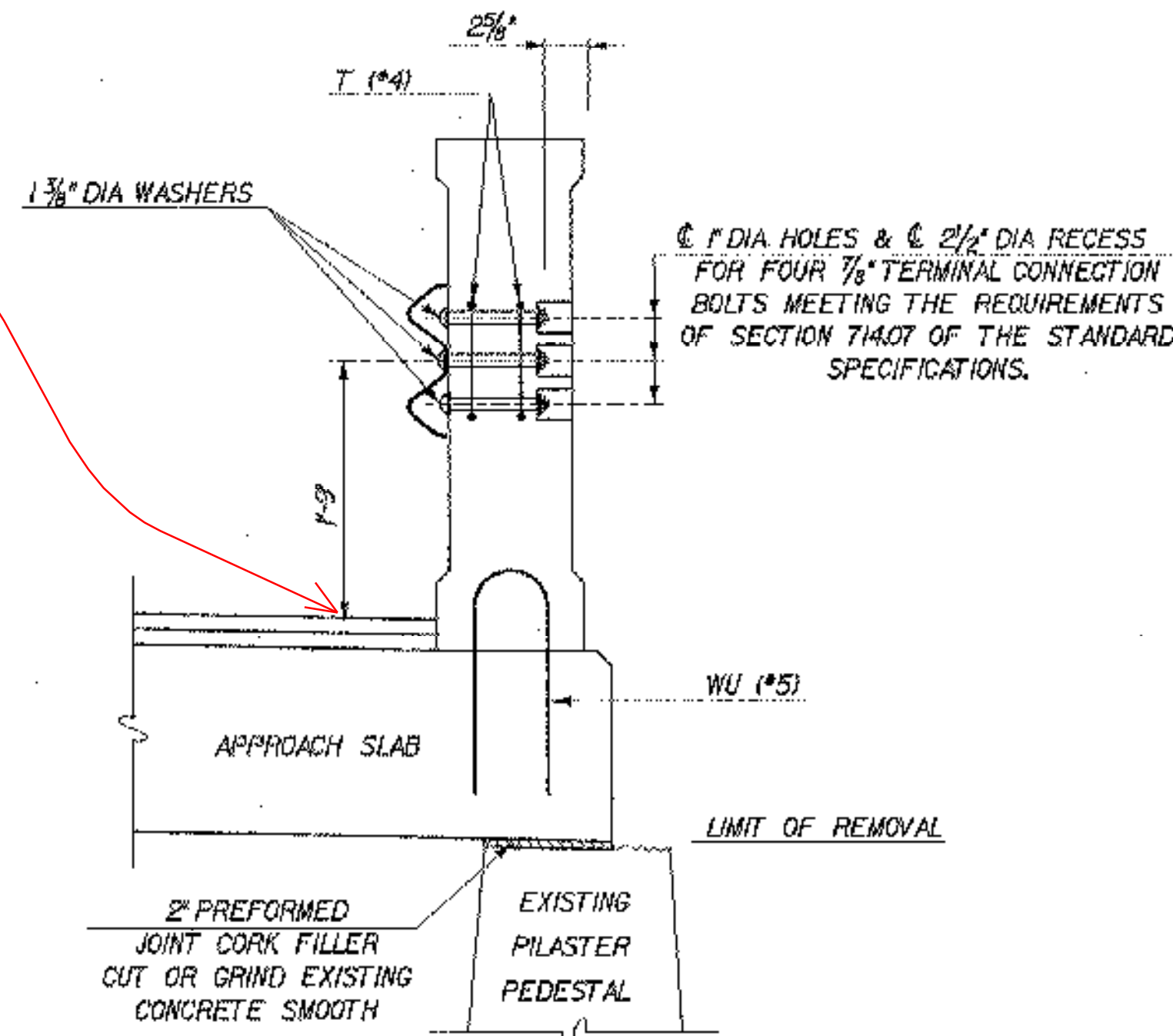
EXTERIOR PILASTER ELEVATIONS
SCALE: 3/4" = 1'-0"
(X DIMENSIONS SHALL BE THE SAME ON EACH SIDE OF JOINT)



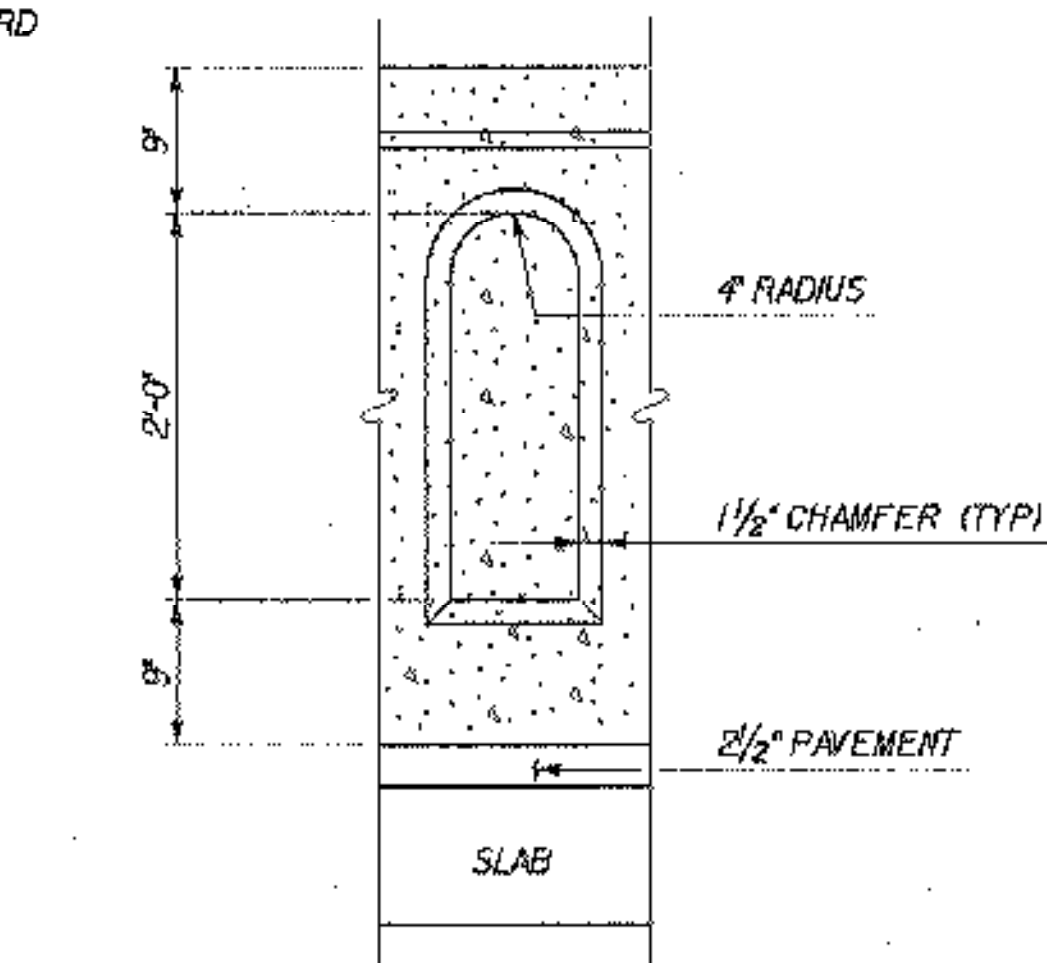
SECTION E-E
NOT TO SCALE
(SHOWING PILASTER)



SECTION F-F
NOT TO SCALE



SECTION G-G
NOT TO SCALE
(SHOWING HDSBGR CONNECTION, SOME REINFORCING OMITTED FOR CLARITY) (SEE SECTION E-E FOR OMITTED REINFORCING)



ARCHITECTURAL INDENTATION
SCALE: 1" = 1'-0"

NOTE: ADDED 12.5 INCH HIGH BY 20 INCH WIDE CURB BETWEEN RAILING AND DECK / APPROACH SLAB ON RIGHT SIDE

SEE C.O. #4

ELIMINATED V #5 BARS AS PER W. TRIPP

NOT ENOUGH RAIL THICKNESS TO GET THESE BARS IN

STATE OF VERMONT AGENCY OF TRANSPORTATION	
Town Of LYNDON	Bridge No. 2
Highway No. ALT VT 122	Log Sta.
	Surv. Sta.
CENTER STREET OVER PASSUMPSIC RIVER	
CIP CONCRETE BRIDGE RAILING DETAILS - 2	
Designed By T. GRANT/S. MERKWAN	Drawn By S. DELIA/S. MERKWAN
Checked By T. GRANT/R. WOOD	Bridge Design Supervisor M. ZYDEL
Date 10/01	Date 10/01
PROJECT LYNDON	PROJECT NO. BHO 1447(26)
I.G.C. info. m:\549103\6con\z\238rx2.dgn	
Bridge Sheet No. 	Sheet 32 of 34

